

Reels and Switches

Description	Page	NEC	CEC	ATEX/ IEC
Cord and Cable Reels General Duty				
7S Continuous Swivel 7P Portable Series	573	X	X	
Cord and Cable Reels Heavy Duty				
RL5000 Heavy Duty Commercial Industrial Cord Reels	575	X	X	
Cord and Cable Reels Weather Protected				
McGill™ 8600 AUTO–LOC Cord Reels	578	X	X	
McGill™ 8700 AUTO–LOC Heavy Duty Cord Reels	579	X	X	
Ordinary Location Powercords				
McGill™ Extension Cords	580	X		
McGill™ Nyloc Safety Grip Plugs Connectors	581	X		
McGill™ Ground Fault Circuit Interrupters	582	X	X	
McGill™ Sensing–Safti–Gard Motor Controls	583	X	X	
McGill™ LOCKBOX Electrical Plug Lockout	584			
Ordinary Location Switches				
McGill™ 0852 0862 Rocker Switches	585	X	X	
McGill™ 0801 0821 0811 0831 Rocker Switches	587	X	X	
McGill™ 0851 0861 Lighted Rocker Switches	589	X	X	
McGill™ 4125 90 Single Pole Toggle Switches	590	X	X	
McGill™ 0121 0140 Multi Pole Toggle Switches	592	X	X	
McGill™ Momentary Contact Pushbutton Switches	594	X	X	
McGill™ Switches Parts Accessories	595			



7S Series



RL5000 Series



8600/8700 Series



Extension Cords



Plug Connector



GFCi



LOCKBOX



0852/0862 Series



0801/0821 and
0811/0831 Series



0851/0861 Series



4125/90 Series



0121/0140 Series



Momentary Contact
Pushbutton

7S Continuous Swivel 7P Portable Series

Available with or without handlamps

Furnished with 18-3 (2 wire plus safety ground) yellow SJOOW-A cord.

NEC/CEC:
Listed for Ordinary Locations

Applications

- A safe and convenient source of retractable power cord for:
 - Portable lighting
 - Power supply
 - General utility service

Features

- 7S and 7SV Series
 - Enclosed construction.
 - Furnished with 7.6 meters (25 feet) of yellow, extra flexible, 18-3 SJOOW-A cord (2-conductor plus safety ground).
 - High quality, double copper brushes.
 - Locking ratchet holds cord at desired length.
 - Adjustable ball stop controls return limit of retractable cord.
 - Hubs in all covers have integral bushings to protect conductor insulation from damage. Hub plate openings are smooth.
 - Continuous 360° patented swiveling action without power interruption or tangling of cord.
 - 7S Series offers choice of hand-lamps available as accessories.
 - 7SV Series includes NEMA 4X (enclosed and gasketed) handlamp to accommodate up to 100 Watt lamp, 6.1 meters (20 feet) of SJOOW-A cord.
 - Models available with built-in automatic switch which activates light when cord is pulled out.
 - Convenient flush type mounting ring fits 4" octagonal outlet box or fuse bracket.
 - Accessory bracket permits wall mounting.
 - Supplied with handlamp to accommodate up to 100 Watt lamp.

Standard Materials

- Reels: steel construction
- Cord: type SJOOW-A, yellow thermoset jacket, oil-resistant, 300 Vac rating

Standard Finishes

- Gray hammer epoxy/polyester powder coat

NEC/CEC Certifications and Compliances

- UL Listed: E4961
- UL Standard: 355
- CSA Listed: LR3060
- Meets OSHA requirements



7S Series




7SV Series

7S Continuous Swivel 7P Portable Series



Available with or without handlamps

Furnished with 18-3 (2 wire plus safety ground) yellow SJOOW-A cord.

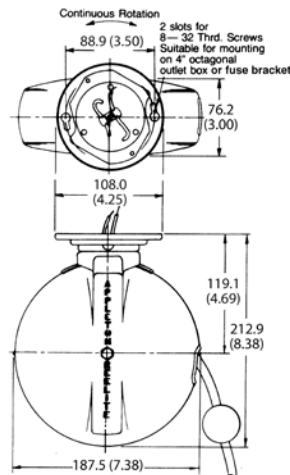
NEC/CEC:
Listed for Ordinary Locations

	Description	Cord Length Meters (Feet)	Cord Size	Rating Amp/Voltage	Catalog Number
 <p>7SV Series</p>	7S continuous swivel, grounded Reelite™ Less handlamp. Max. accessory weight: 560 grams (20 oz). Handlamps ① available. Furnished with yellow SJOOW-A cord and RE-FB4 fuse bracket assembly.	7.6 (25)	18-3 SJOOW-A	4 Amp, 125 Vac	RE-7S2G
	7S Reelite™ with NEMA 4X, indoor use handlamp Continuous swivel, grounded Reelite™ complete with RE-VHL100N (enclosed and gasketed) handlamp ① as shown. Accommodates up to 100 Watt lamp. Furnished with yellow SJOOW-A cord.	6.1 (20)	18-3 SJOOW-A	4 Amp, 125 Vac	RE-7SV2G
	7S Reelite™ with NEMA 4X, indoor use handlamp and automatic switch Continuous swivel, grounded Reelite™ complete with automatic switch (not illustrated) and RE-VHL100N (enclosed and gasketed) handlamp ①. Accommodates up to 100 Watt lamp. Furnished with yellow SJOOW-A cord.	6.1 (20)	18-3 SJOOW-A	4 Amp, 125 Vac	RE-7SV2G-AS

Accessories

	Description	Catalog Number
	Ball Stop Yellow 2-piece split design permits installation without disconnecting handlamp or receptacle on end of cord. Made of polypropylene. Installs on SJOOW-A cord used on all Appleton portable reels.	RE-PBS-1
	Handlamps Handlamps are available as optional accessories. For ordering information refer to the <i>Lighting: Portable Lighting Section</i>	

Dimensions in Millimeters (Inches)



① See Lighting section, Portable Lighting.

RL5000 Heavy Duty Commercial Industrial Cord Reels

NEC/CEC:
Listed for Ordinary Locations

Applications

- Commercial/industrial, 15.2 meter (50 foot) portable cord reel to safely transfer a continuous retractable power supply, portable lighting or general utility service.
- All steel construction for dry location application and suitable for base down, ceiling or wall mounting.
- Typical applications include industrial/MRO, warehouse, loading docks, commercial building, OEM machinery and equipment, OSHA regulated service garages, muffler and oil change shops, institutions and state agencies.
- Design options for single or three phase power source 250 Vac maximum and supplied with #16 or #14 gauge three conductor or #14 gauge four conductor SJOOW-A, 300 Vac cord.
- Reel models are available with cable only or with various handlamp and accessory options.

Features

- All steel construction provides added strength for rugged commercial/industrial dry location service.
- Available in 15.2 meter (50 foot)/ #16 gauge- 3 conductor, 15.2 meter (50 foot) #14 gauge- 3 conductor, and 13.7 meter (45 foot) #14 gauge- 4 conductor. All with high visibility, yellow 300 Vac jacket, UL and CSA approved oil resistant thermoset cord.
- Collector ring and brush assembly rated at 15 Amp, 250 Vac, three conductor (single phase) and four conductor (three phase) construction.
- 0.9 meter (3 foot) lead in power cord provides portable connection installation.
- Compact design offers long cable capacity in a small unit, advantageous to the OEM manufacturers.
- Overhung drum design offers simple field cable tension adjustment without cable disconnection.
- Adjustable cable guide provides for various reel mounting positions.
- Cable locking ratchet (included as standard) holds cable at desired length. Ratchet can be disengaged when constant cable tension is desired.
- Reels having handlamp without switch in the handle are operated by an internal automatic switch located inside the reel. Power to the handlamp is actuated when cable is pulled out at any length and ratchet is locked. Power is automatically turned off when all cable is retracted back into the reel.

Standard Materials

- Base, drum, spring cartridge cover and cable guide arm: steel
- Brush cover: aluminum
- Cable outlet guide: Acetal
- Collector rings: brass
- Brushes: high density copper graphite
- Cord: high visibility yellow type SJOOW-A thermoset, 300 Vac rating

Standard Finishes

- Base and housing: gray hammer epoxy/polyester powder coat
- Drum: black epoxy powder coat



Options




- Combination mounting base converts to a 330° ceiling swivel or a 100° wall pivot base.
- Power outlet box of non-conductive rubber and plastic construction complete with two duplex 3-wire, 15 Amp, 125 Vac receptacles.
- Three handlamps available, 100 Watt incandescent with reflector, switch and receptacle, 100 Watt incandescent (OSHA approved), and 13 Watt fluorescent with ballast and switch in handle.

NEC/CEC Certifications and Compliances

- UL Listed: E4961
- UL Standard: 355
- Reels with handlamps are UL Listed.
- Reels without handlamps are UL Recognized Components.
- CSA Listed: LR3060

RL5000 Heavy Duty Commercial Industrial Cord Reels

NEC/CEC:
Listed for Ordinary Locations

	Description	Cord Length Meters (Feet)	Cord Size	Rating	Catalog Number
	Portable grounded cord reel				
	With locking ratchet ①. No handlamp or accessories.	15.2 (50)	16-3	9 Amp, 125 Vac	RL5360
	With locking ratchet ①. No handlamp or accessories.	15.2 (50)	14-3	13 Amp, 125 Vac	RL5340
	With locking ratchet ①. No handlamp or accessories.	13.7 (45)	14-4	11 Amp, 250 Vac	RL5440
	Portable grounded cord reel				
	With locking ratchet, automatic internal power switch, shock absorbing ball stop and RE-HL7G handlamp having vinyl coated guard and rubber handle without switch or receptacle in handle. Suitable for use in commercial garages providing minor repair and storage per NEC 511.4(B)(2).	15.2 (50)	16-3	5 Amp, 125 Vac	RL5367
	Portable grounded cord reel				
	With locking ratchet, shock absorbing ball stop and 13 Watt fluorescent handlamp having a built-in ballast and switch in handle. Suitable for use in commercial garages providing minor repair and storage per NEC 511.4(B)(2).	15.2 (50)	16-3	5 Amp, 125 Vac	RL5368



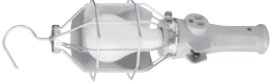
① Ratchet is deactivated for constant tension duty. To activate refer to instruction sheet.

RL5000 Heavy Duty Commercial Industrial Cord Reels

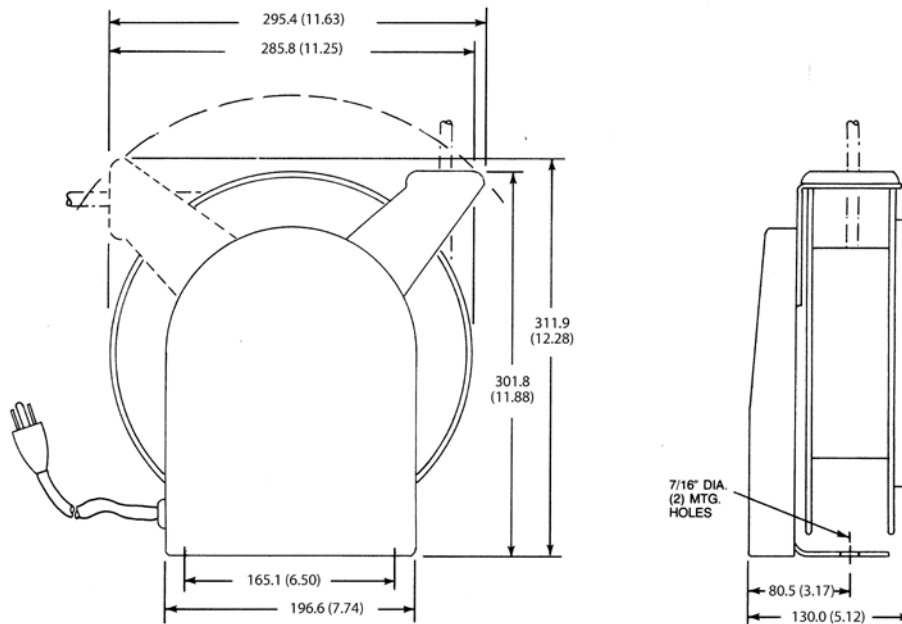
NEC/CEC:
Listed for Ordinary Locations

REELS AND SWITCHES/CORD AND CABLE REELS: HEAVY DUTY

Accessories

	Description	Weight Each Grams (oz)	Catalog Number
	Power outlet box Non-conductive rubber and plastic construction with two-duplex 3-wire, 15 Amp, 125 Vac receptacles. Cable range: .325"-.655"	553.0 (19.50)	RE-PPB
	Shock-absorbing ball stop	—	RE-PBS-2
	Handlamps Handlamps are available as optional accessories. For ordering information refer to the <i>Lighting: Portable Lighting</i> Section		

Dimensions in Millimeters (Inches)



McGill™ 8600 AUTO-LOC Cord Reels

NEC/CEC:
Listed for Ordinary Locations

Applications

- Weather-tight, dust-tight construction for heavy-duty industrial applications.
- Ideal for hoists, electric tools, and moving equipment.

Features

- Corrosion resistant.
- Sufficient spring tension to provide no more than 10% sag when cable is stretched horizontally.
- Fully adjustable four roller cable guide to minimize cable wear.
- Long life, self-contained mainspring.
- Furnished with black SO cable 3 and 4 conductors.
- Models available with and without handlamp.
- Removable ratchet for application flexibility.
- 30 Amp, 600 V modular collector ring designed for long service life.
- 330° pivot bases available.
- 1" NPT line entry in junction box.



Standard Materials

- Aluminum die cast/yellow polyester powder coat

NEC/CEC Certifications and Compliances

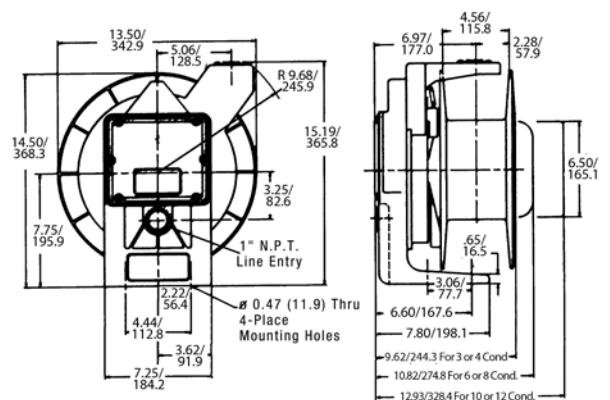
- UL Listed: E53326
- UL Standard: 355
- CSA Approved
- NEMA 4

SO Cord Type	Rating ①	Catalog Numbers				
		15.2 m (50') Cord	13.7 m (45') Cord	10.7 m (35') Cord	9.1 m (30') Cord	7.6 m (25') Cord
16/4	7 Amp	8638	—	—	8634	—
16/3	9 Amp	8628	—	—	—	—
14/4	11 Amp	—	8667	—	—	8663
14/3	13 Amp	8658	—	—	—	—
12/4	14 Amp	—	—	—	8694	—
12/3	18 Amp	—	—	8685	—	—

Accessories and Replacement Parts

Description	Catalog Number
Ball stop for 8600 series cord reels (sold separately)	8600-001

Dimensions in Millimeters (Inches)



① Cord reel with handlamp rated at 125 Vac.

McGill™ 8700 AUTO-LOC Heavy Duty Cord Reels

NEC/CEC:
Listed for Ordinary Locations

Applications

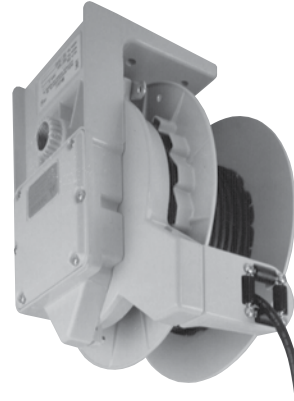
- Weather-tight, dust-tight construction for heavy-duty industrial applications
- Ideal for hoists, electric tools, and moving equipment

Features

- Weather-tight, dust-tight construction for heavy-duty industrial applications.
- Corrosion resistant.
- Sufficient spring tension to provide no more than 10% sag when cable is stretched horizontally.
- Fully adjustable four roller cable guide to minimize cable wear.
- Long life, self-contained mainspring.
- Furnished with black SO cable up to 12 conductors.
- Removable ratchet for application flexibility.
- 30-75 Amp, 600 V modular collector ring designed for long service life.
- 330° pivot bases available for 2-6 conductor reels.
- 1" NPT line entry in junction box.

Standard Materials

- Heavy gauge steel/yellow powder polyester coat
- 8701-8712 die cast aluminum



NEC/CEC Certifications and Compliances

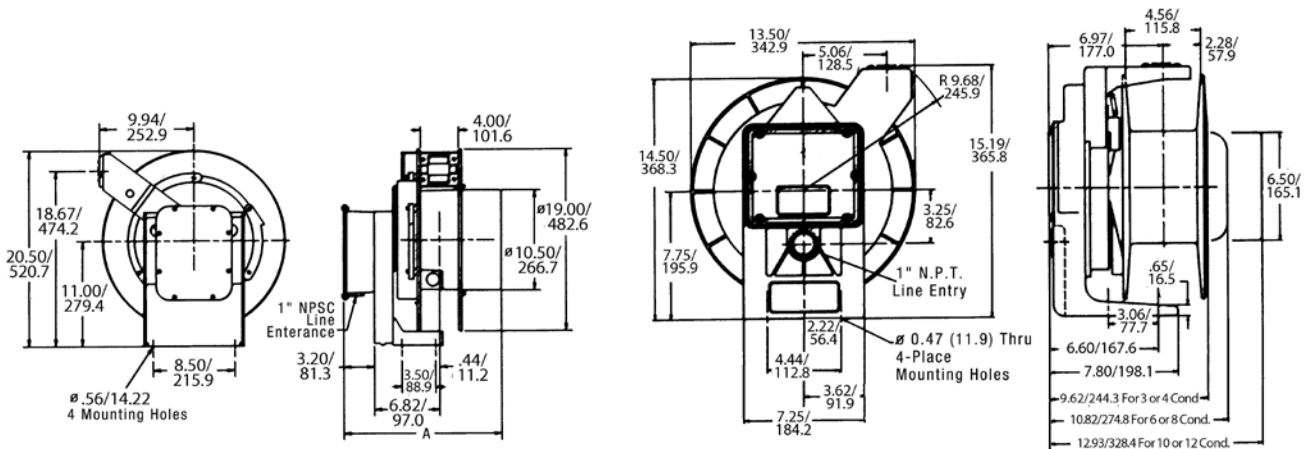
- 8706 and 8707 models are UL Listed: E53326
- UL Standard: 355
- 8706 and 8707 models are CSA Certified
- NEMA 4

SO Cord Type	Rating	Catalog Numbers		
		21.3 m (70') Cord	15.2 m (50') Cord	12.2 m (40') Cord
12/4	14 Amp	—	—	8707
12/3	18 Amp	8729	8706	—

Accessories and Replacement Parts

Description	Catalog Number
Ball stops For reels with 16 ga.; 14 ga. 3, 4, and 6 conductor; 12 ga. 3 and 4 conductor; 10/3 cord (cord dia. .430-.750")	8600-001

Dimensions in Millimeters (Inches)



8701-8712 Series

8713-8747 Series

McGill™ Extension Cords

NEC:
Listed for Ordinary Locations

Applications

- Heavy-duty industrial grade cords withstand rough use.

Features

- Yellow thermoplastic SJTW and STO cords and plugs resist oil and other corrosive elements.
- Available in a variety of lengths and sizes.
- SJOW — Junior hard service, 300 Volt, oil-resistant, all-weather cord.
- SJTW — Junior hard service, 300 Volt, thermoplastic, all-weather cord.
- STO — Hard service, 600 Volt, thermoplastic, oil-resistant cord.

NEC Certifications and Compliances

- UL Listed: E22006
- Meets OSHA requirements



5351-0623

Cord Type ①	Catalog Numbers			
	7.6 m (25') Length	15.2 m (50') Length	22.9 m (75') Length	30w.5 m (100') Length
16/3-SJTW	5351-0623 ②	5351-0653 ②	5351-0673	5351-0613
14/3-STO	5351-0423	—	5351-0473	—
14/3-SJOW	—	5351-0453	—	5351-0413
12/3-STO	5351-0223	—	5351-0273	—
12/3-SJOW	—	5351-0253	—	5351-0213

① Cord supplied may be equivalent or better than listed.

② Cords with molded plugs. All others have yellow 515P plugs and 515C connectors attached.

McGill™ Nyloc Safety Grip Plugs Connectors

NEC:
Listed for Ordinary Locations

Applications

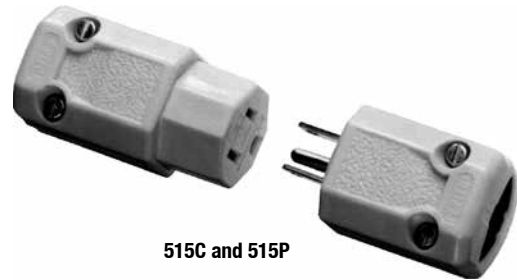
- Ideal for fast, easy wiring.

Features

- Durable yellow nylon construction with nylon cord grip eliminates need for exposed metal, enhancing safety and durability.
- Non-metallic cord grips.

Certifications and Compliances

- UL Listed: E44590
- Meets OSHA requirements
- Meets NEMA and ANSI specifications



515C and 515P

Description	Rating	Catalog Number
2 pole; 3 wire straight blade plug	15 Amp, 125 Vac	515P
2 pole; 3 wire straight blade connector	15 Amp, 125 Vac	515C

Appleton® OZGEDNEY

REELS AND SWITCHES: ORDINARY LOCATION POWERCORDS

McGill™ Ground Fault Circuit Interrupters

NEC/CEC:
Listed for Ordinary Locations

Applications

- Protects people and equipment by interrupting electrical power when loads have a potentially lethal ground current in excess of 6 milliamps.
- The portable construction enables use of these devices in a variety of applications, such as power tools or hand lamps.
- Indoor/Outdoor usage.

Features

- Manual reset is required after trip (fault) condition or power outage occurs to prevent unmonitored equipment start-up.
- 15 and 20 Amp, 120 and 240 Volt, 60 Hz models available.
- 4-6 milliamp trip level.
- Provides protection in 3 wire circuits.
- Mechanical trip indicator to show power “ON”.
- Rugged construction for long lasting durability.
- Grounded neutral — 4 ohms typical.
- Open neutral protection.
- Radio frequency interference suppression to protect against nuisance tripping.

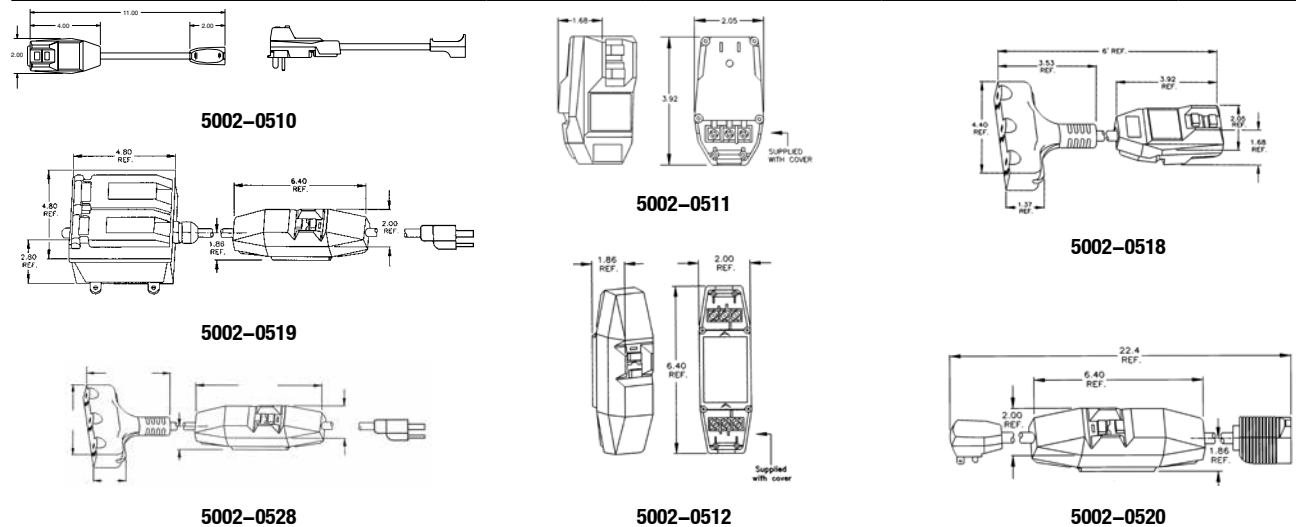
NEC/CEC Certifications and Compliances

- UL Listed: E165783
- CSA Approved



	NEMA Configuration Number	Rating	Catalog Number
GFCI cord set, 274 mm (11”) long	5-15P/R	15 Amp, 120 Vac	5002-0510
User attachable GFCI portable power plug	5-15P	15 Amp, 120 Vac	5002-0511
User attachable in-line GFCI, dual voltage	—	15 - 20 Amp, 120 - 240 Vac	5002-0512
GFCI cord set, 1.83 m (6’) long with tri-tap receptacle	5-15P/R	15 Amp, 120 Vac	5002-0518
GFCI protected quad box ①	5-20P/R	20 Amp, 120Vac	5002-0519
In-line GFCI with plug and receptacle attached	5-15P/R	15 Amp, 120 Vac	5002-0520
In-Line GFCI with plug and tri-tap molded power block attached	5-15P/R	15 Amp, 120 Vac	5002-0528

Dimensions in Inches/Millimeters



① 2 of the 4 receptacles are T-slotted to allow both 15 and 20 amp tools, with either NEMA 5-15 or 5-20 plugs.

McGill™ Sensing–Safti–Gard Motor Controls

NEC/CEC:
Listed for Ordinary Locations

Applications

- These motor controls help prevent accidental machine start up after a voltage drop or power interruption.
- It is intended for installation on equipment that is driven by a small electrical motor, operating on 120 Vac or 240 Vac (single phase) and is connected to electrical power by means of 14 gauge, 3 wire flexible cord.
- Upgrades small machines to the latest safety requirements by preventing automatic restart accidents following voltage drop or power interruption.
- Replaces old, frayed, dangerous, and ungrounded power cords.

Features

- An added sensor won't allow the Sensing-Safti-Gard to reset until your equipment switch has been turned off.
- Permits use of machine ON/OFF switch.
- Easy installation.
- Meets OSHA, NEC, and NFPA safety standards.

NEC/CEC Certifications and Compliances

- UL and cUL Recognized
- UL Listed: E78258



506

	Electrical Rating	Catalog Number
508 mm (20") cord on equipment switch end; 2.44 m (8') cord w/molded plug on power end	120 Vac, 15 Amp, 3/4 HP motor max., 50/60 Hz	506
508 mm (20") cord on equipment switch end; 2.44 m (8') cord on power end (no plug)	120 Vac, 18 Amp, 1 HP motor max., 50/60 Hz	507
508 mm (20") cord on equipment switch end; 2.44 m (8') cord on power end (no plug)	200-240 Vac, 15 Amp (single phase), 2 HP motor max., 50/60 Hz	508
356 mm (14") cord on male plug end; 305 mm (12") cord on female receptacle end	120 Vac, 15 Amp, 3/4 HP motor max., 50/60 Hz	509

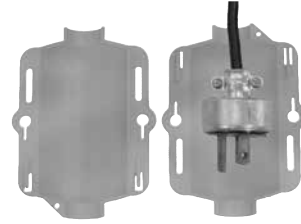
There is no direct replacement for previous Catalog Number 505, as the new case size does not allow it to be plugged into a duplex type outlet. Choose Catalog Number 506 or, for new machines with a good power cord, choose Catalog Number 509.

McGill™ LOCKBOX Electrical Plug Lockout

NEC/CEC:
Rated for Ordinary Locations

Applications

- Provides a positive lockout of the plug for cord connected electrical equipment when performing maintenance and service activities.
- LOCKBOX is a lockable enclosure that allows personnel to work safely and confidently on electrical equipment without fear of unexpected or unauthorized start-up.



Features

- Provisions for up to two locks.
- Accepts padlocks up to 3/8" shackle diameter.
- OSHA compliant when installed according to instructions.
- Indoor or outdoor use.
- Highly visible, safety yellow body.
- Holes for optional I.D. tag to indicate ownership.

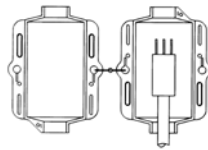
Standard Materials

- High impact U.V. polymer

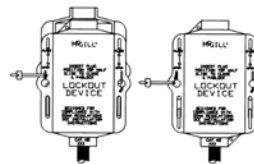
Description	Catalog Number
LOCKBOX Electrical Plug Lockout	5005-0530

Illustrated Features

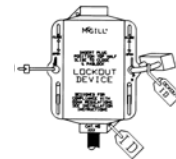
Easy to Use



1. Open LOCKBOX

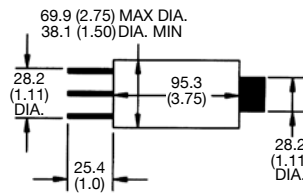


2. Close and Slide



3. Lock and tag

Dimensions in Millimeters (Inches)



Recommended maximum plug size (inches)

McGill™ 0852/0862 Series Rocker Switches

NEC/CEC:
Listed for Ordinary Locations

Applications

- The 0852/0862 Series rocker switches are available in single pole (0852) and double pole (0862), unlighted and lighted models. These switches are equipped with nylon snap-in brackets. They are Vac rated switches also suitable for low voltage Vdc applications.

Features

- Designed to fit full-size rectangular cutouts. Angled corners are suggested for optimum fit, but standard rectangular cutouts are acceptable.
- Curved rockers with illuminated single or dual lens to fit your style and functional requirements.
- 1/4" Quick connect terminals standard on all switches.
- Rocker style: curved/smooth face matte.
- Bracket style: smooth face matte.
- 125 Vac Incandescent lamp.
- 12 Vdc or 28 Vdc Neon lamp.

Standard Materials

- Contacts: silver plate
- Terminals: brass or copper
- Base: phenolic +150 °C (+302 °F)
- Rocker/bracket: nylon 66 +105 °C (+221 °F)

NEC/CEC Certifications and Compliances

- UL Recognized Component
- UL File Number: E335442
- UL Standard: 1054, Guide WORY2
- CSA File Number: 249055
- CSA Standard: C22.2 No. 55
- RoHS Compliant



0862-2302N



0862-1301N



0852-0011N



0862-2312N

Circuitry			Rocker Color	Lamp Voltage ①	Poles	Single Pole		Double Pole		
A	B	C				Rating	Catalog Number	Poles	Rating	Catalog Number
Non-lighted versions										
ON	—	OFF	White	—	SPST		0852-0001N	DPST		0862-0001N
ON	OFF	ON	White	—	SPDT		0852-0002N	DPDT		0862-0002N
ON	—	ON	White	—	SPST		0852-0003N	DPST		0862-0003N
(ON)	—	OFF	White	—	SPST		0852-0004N	DPST		0862-0004N
ON	—	OFF	Black	—	SPST		0852-0011N	DPST		0862-0011N
ON	OFF	ON	Black	—	SPDT	15 Amp, 125 Vac 10 Amp, 250 Vac	0852-0012N	DPDT	15 Amp, 125 Vac 10 Amp, 250 Vac	0862-0012N
ON	—	ON	Black	—	SPST	3/4 HP, 125-250 Vac	0852-0013N	DPST	3/4 HP, 250 Vac	0862-0013N
(ON)	—	OFF	Black	—	SPST		0852-0014N	DPST		0862-0014N
ON	—	OFF	Red	—	SPST		0852-0021N	DPST		0862-0021N
ON	OFF	ON	Red	—	SPDT		0852-0022N	DPDT		0862-0022N
ON	—	ON	Red	—	SPST		0852-0023N	DPST		0862-0023N
(ON)	—	OFF	Red	—	SPST		0852-0024N	DPST		0862-0024N

() Momentary. Poles: SP = single pole, DP = double pole, ST = single throw, DT = double throw.

① Lamp voltage determines switch voltage rating.

Shaded catalog numbers are normally stocked items. All other items are made to order. Contact your local sales representative for pricing.

McGill™ 0852/0862 Series Rocker Switches

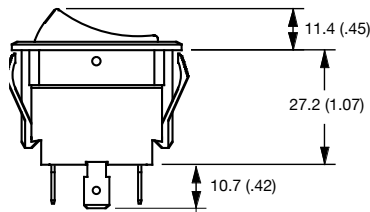
NEC/CEC:
Listed for Ordinary Locations

Circuitry			Rocker/ Lens Color	Lamp Voltage ①	Poles	Single Pole		Double Pole	
A	B	C				Rating	Catalog Number	Poles	Rating
Lighted versions									
ON	—	OFF	White/Clear	125 Vac	SPST		0852-1101N	DPST	0862-1101N
ON	—	OFF	White/Red	125 Vac	SPST		0852-1301N	DPST	0862-1301N
ON	—	OFF	White/Green	125 Vac	SPST		0852-1401N	DPST	0862-1401N
ON	—	OFF	Black/Clear	125 Vac	SPST		0852-1111N	DPST	0862-1111N
ON	—	OFF	Black/Red	125 Vac	SPST	15 Amp, 125 Vac	0852-1311N	DPST	0862-1311N
ON	—	OFF	Black/Green	125 Vac	SPST	10 Amp, 250 Vac	0852-1411N	DPST	0862-1411N
ON	—	OFF	Red/Clear	125 Vac	SPST	1/2 HP, 125 Vac	0852-1121N	DPST	0862-1121N
ON	—	OFF	Red/Red	125 Vac	SPST	1/2 HP, 250 Vac	0852-1321N	DPST	0862-1321N
ON	—	OFF	Black/Clear	12 Vdc	SPST		0852-4111N ②	DPST	0862-4111N ②
ON	—	OFF	Black/Red	12 Vdc	SPST		0852-4311N ②	DPST	0862-4311N ②
ON	—	OFF	Black/Clear	28 Vdc	SPST		0852-5111N ②	DPST	0862-5111N ②
ON	—	OFF	Black/Red	28 Vdc	SPST		0852-5311N ②	DPST	0862-5311N ②
ON	OFF	ON	White/Clear	125 Vac	SPDT		0852-2102N	DPDT	0862-2102N
ON	OFF	ON	White/Red	125 Vac	SPDT		0852-2302N	DPDT	0862-2302N
ON	OFF	ON	White/Green	125 Vac	SPDT		0852-2402N	DPDT	0862-2402N
ON	OFF	ON	Red/Clear	125 Vac	SPDT		0852-2112N	DPDT	0862-2112N
ON	OFF	ON	Black/Red	125 Vac	SPDT	15 Amp, 125 Vac	0852-2312N	DPDT	0862-2312N
ON	OFF	ON	Black/Green	125 Vac	SPDT	10 Amp, 250 Vac	0852-2412N	DPDT	0862-2412N
ON	OFF	ON	Red/Clear	125 Vac	SPDT	3/4 HP, 125 Vac	0852-2122N	DPDT	0862-2122N
ON	OFF	ON	Red/Red	125 Vac	SPDT	3/4 HP, 250 Vac	0852-2322N	DPDT	0862-2322N
ON	OFF	ON	Black/Clear	12 Vdc	SPDT		0852-4112N ②	DPDT	0862-4112N ②
ON	OFF	ON	Black/Red	12 Vdc	SPDT		0852-4312N ②	DPDT	0862-4312N ②
ON	OFF	ON	Black/Clear	28 Vdc	SPDT		0852-5112N ②	DPDT	0862-5112N ②
ON	OFF	ON	Black/Red	28 Vdc	SPDT		0852-5312N ②	DPDT	0862-5312N ②
ON	—	ON	White/Clear	125 Vac	SPST		0852-2103N	DPST	0862-2103N
ON	—	ON	White/Red	125 Vac	SPST		0852-2303N	DPST	0862-2303N
ON	—	ON	White/Green	125 Vac	SPST	15 Amp, 125 Vac	0852-2403N	DPST	0862-2403N
ON	—	ON	Black/Clear	125 Vac	SPST	10 Amp, 250 Vac	0852-2113N	DPST	0862-2113N
ON	—	ON	Black/Red	125 Vac	SPST	1/2 HP, 125 Vac	0852-2313N	DPST	0862-2313N
ON	—	ON	Black/Green	125 Vac	SPST	1/2 HP, 250 Vac	0852-2413N	DPST	0862-2413N
ON	—	ON	Red/Clear	125 Vac	SPST		0852-2123N	DPST	0862-2123N
ON	—	ON	Red/Red	125 Vac	SPST		0852-2323N	DPST	0862-2323N

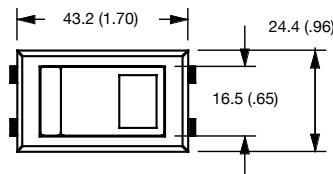
RELS AND SWITCHES: ORDINARY LOCATION SWITCHES

Apleton® OZGEDNEY

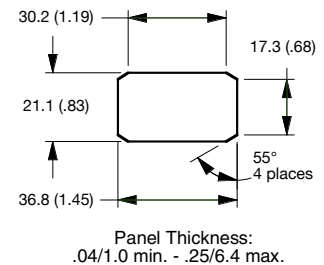
Dimensions in Millimeters (Inches)



Side View



Top View



Mounting Hole

Poles: SP = single pole, DP = double pole, ST = single throw, DT = double throw.

① Lamp voltage determines switch voltage rating

② Not CSA or UL Approved

Shaded catalog numbers are normally stocked items. All other items are made to order. Contact your local sales representative for pricing.

McGill™ 0801/0821 and 0811/0831 Series Rocker Switches

NEC/CEC:
Listed for Ordinary Locations

Applications

- Suitable for 20 Amp, 12 Vdc applications.
- Recognized for reliable, long service life by appliance manufacturers and manufacturers of industrial and commercial equipment.

Features

- Designed to fit full-size rectangular cutouts. Angled corners are suggested for optimum fit, but standard rectangular cutouts are acceptable.
- 1/4" Quick connect terminals standard on all switches.
- Multiple mounting styles - offset cover plate, metal snap-in bezel, nylon snap-in bezel.
- A wide variety of circuits are available to meet your specific requirements.
- McGill™ ensures extra reliability through mechanical excellence and a margin of electrical capacity - up to 20 Amps.
- White serrated gloss rocker style.

Standard Materials

- Contacts: silver plate
- Terminals: brass or copper
- Base: phenolic +150 °C (+302 °F)
- Rocker and nylon bracket: nylon 66 +105 °C (+221 °F)
- Spring steel snap-in nickel plated bezel
- Black gloss nylon snap-in bezel

NEC/CEC Certifications and Compliances

- UL Recognized Component
- UL File Number: E335442
- UL Standard: 1054, Guide WORY2
- CSA File Number: 249055
- CSA Standard: C22.2 No. 55
- RoHS Compliant



0811-0310N



0801-1310N

REELS AND SWITCHES: ORDINARY LOCATION SWITCHES

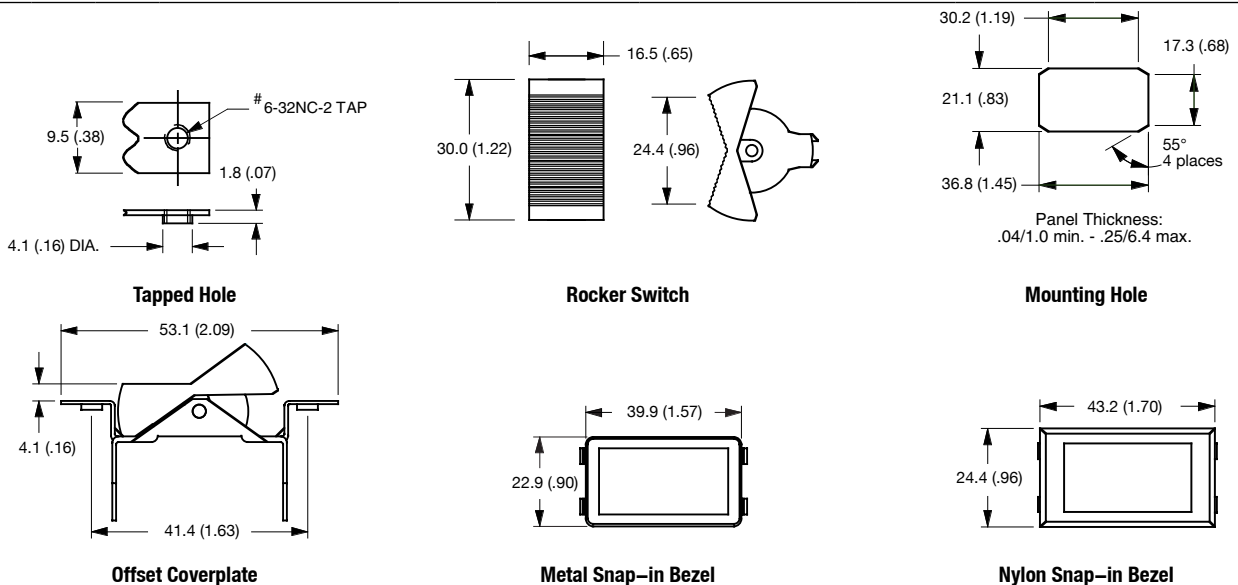
Appleton® OZGEDNEY

McGill™ 0801/0821 and 0811/0831 Series Rocker Switches

NEC/CEC:
Listed for Ordinary Locations

Circuitry			Single Pole				Double Pole		
A	B	C	Mounting	Poles	Catalog Number	Rating	Poles	Catalog Number	Rating
ON	—	OFF	Offset Coverplate	SPST	0801-0310N		DPST	0811-0310N	
ON	—	OFF	Snap-in Bezel (Metal)	SPST	0801-1310N		DPST	0811-1310N	
ON	OFF	ON	Offset Coverplate	SPDT	0801-0311N		DPDT	0831-0311N	
ON	OFF	ON	Snap-in Bezel (Metal)	SPDT	0801-1311N		DPDT	0831-1311N	
ON	—	ON	Offset Coverplate	SPDT	0801-0312N		DPDT	0831-0312N	
ON	—	ON	Snap-in Bezel (Metal)	SPDT	0801-1312N	15 Amp, 125 Vac 10 Amp, 250 Vac 3/4 HP, 125-250 Vac	DPDT	0831-1312N	15 Amp, 125 Vac 10 Amp, 250 Vac 3/4 HP, 250 Vac
(ON)	—	OFF	Offset Coverplate	SPST	0821-0313N		DPST	0831-0313N	
(ON)	—	OFF	Snap-in Bezel (Metal)	SPST	0821-1313N		DPST	0831-1313N	
(ON)	OFF	(ON)	Offset Coverplate	SPDT	0821-0314N		DPDT	0831-0314N	
(ON)	OFF	(ON)	Snap-in Bezel (Metal)	SPDT	0821-1314N		DPDT	0831-1314N	
(ON)	OFF	ON	Offset Coverplate	SPDT	0821-0316N		DPDT	0831-0316N	
(ON)	OFF	ON	Snap-in Bezel (Metal)	SPDT	0821-1316N		DPDT	0831-1316N	
ON	—	(OFF)	Offset Coverplate	SPST	0821-0317N †		DPST	0831-0317N	
ON	—	(OFF)	Snap-in Bezel (Metal)	SPST	0821-1317N †	15 Amp, 125 Vac 10 Amp, 250 Vac 3/4 HP, 250 Vac	DPST	0831-1317N	15 Amp, 125 Vac 10 Amp, 250 Vac 3/4 HP, 250 Vac
(ON)	—	ON	Offset Coverplate	SPDT	0821-0318N		DPDT	0831-0318N	
(ON)	—	ON	Snap-in Bezel (Metal)	SPDT	0821-1318N		DPDT	0831-1318N	
ON	—	OFF	Snap-in Bezel (Nylon)	SPST	0801-1310AN	20 Amp, 120-277 Vac	DPST	0811-1310AN	20 Amp, 120-277 Vac 1-1/2 HP, 125 Vac 3/4 HP, 125-250 Vac
ON	OFF	ON	Snap-in Bezel (Nylon)	SPDT	0801-1311AN	20 Amp, 120-277 Vac 1-1/2 HP, 125 Vac	DPDT	0831-1311AN	20 Amp, 120-277 Vac 1-1/2 HP, 125 Vac
ON	—	ON	Snap-in Bezel (Nylon)	SPDT	0801-1312AN	3/4 HP, 125-250 Vac	DPDT	0831-1312AN	3/4 HP, 125-250 Vac

Dimensions in Millimeters (Inches)



() Momentary. Poles: SP = single pole, DP = double pole, ST = single throw, DT = double throw.
 † Not CSA or UL Approved.

Shaded catalog numbers are normally stocked items. All other items are made to order. Contact your local sales representative for pricing.

McGill™ 0851/0861 Series Lighted Rocker Switches

Black Bezel, White Rocker, Red Lens

NEC/CEC:
Listed for Ordinary Locations

Applications

- Recognized for reliable, long service life by appliance manufacturers and manufacturers of industrial and commercial equipment.

Features

- Designed to fit full-size rectangular cutouts. Angled corners are suggested for optimum fit, but standard rectangular cutouts are acceptable.
- Curved rockers with illuminated single or dual lens to fit your style and functional requirements.
- 1/4" Quick connect terminals standard on all switches.
- A variety of circuits are available to meet your specific requirements.
- 125 Vac incandescent lamp standard.
- Rocker style: white smooth gloss.
- Black gloss nylon snap-in bezel.

Standard Materials

- Contacts: silver plate
- Terminals: brass or copper
- Base: phenolic +150 °C (+302 °F)
- Rocker and nylon bracket: nylon 66 +105 °C (+221 °F)

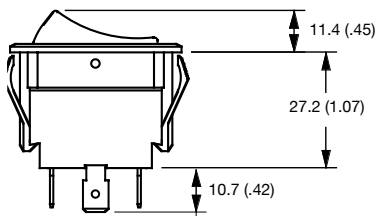


NEC/CEC Certifications and Compliances

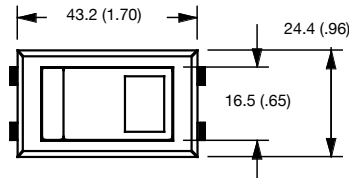
- UL Recognized Component
- UL File Number: E335442
- UL Standard: 1054, Guide WORY2
- CSA File Number: 249055
- CSA Standard: C22.2 No. 55
- RoHS Compliant

Circuitry			Single Pole					Double Pole		
A	B	C	Lights	Lamp Voltage ①	Poles	Catalog Number	Rating	Poles	Catalog Number	Rating
ON	—	OFF	1	125 Vac	SPST	0851-1301N		DPST	0861-1301N	
ON	—	ON	2	125 Vac	SPDT	0851-2303N	15 Amp, 125 Vac	DPDT	0861-2303N	15 Amp, 125 Vac
(ON)	—	OFF	1	125 Vac	SPST	0851-1304N	10 Amp, 250 Vac	DPST	0861-1304N ②	10 Amp, 250 Vac
ON	—	(OFF)	1	125 Vac	SPST	0851-1307N	1/2 HP, 125 Vac	DPST	0861-1307N ②	3/4 HP, 250 Vac
(ON)	—	ON	2	125 Vac	SPDT	0851-2308N	1/2 HP, 250 Vac	DPDT	0861-2308N ②	
ON	OFF	ON	2	125 Vac	SPDT	0851-2302N	15 Amp, 125 Vac	DPDT	0861-2302N	15 Amp, 125 Vac
(ON)	OFF	(ON)	2	125 Vac	SPDT	0851-2305N ②	10 Amp, 250 Vac	DPDT	0861-2305N ②	10 Amp, 250 Vac
(ON)	OFF	ON	2	125 Vac	SPDT	0851-2306N ②	3/4 HP, 125 Vac	DPDT	0861-2306N ③	3/4 HP, 250 Vac
(ON)	OFF	ON	2	125 Vac	SPDT	0851-2306N ②	3/4 HP, 250 Vac	DPDT	0861-2306N ③	3/4 HP, 250 Vac

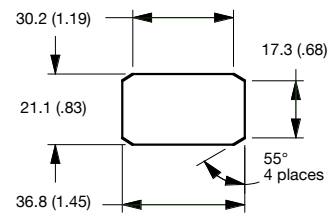
Dimensions in Millimeters (Inches)



Side View



Top View



Panel Thickness:
.04/1.0 min. - .25/6.4 max.

Mounting Hole

() Momentary. Poles: SP = single pole, DP = double pole, ST = single throw, DT = double throw.

① Lamp voltage determines switch volume rating.

② Not CSA or UL Approved.

③ Not CSA Approved.

Shaded catalog numbers are normally stocked items. All other items are made to order. Contact your local sales representative for pricing.

McGill™ 4125/90 Series Single Pole Toggle Switches

NEC/CEC:
Listed for Ordinary Locations

Applications

- McGill™ full-size, single pole toggle switches are available in several electrical ratings to meet a variety of requirements.
- Ruggedly constructed with metallic toggle and threaded bushing to ensure extended service life.
- Marine, food service, generator, industrial control and office automation markets.
- Appropriate for use in low voltage DC applications.

Features

- A variety of circuits are available.
- Available with screw, solder, and 1/4" Quick connect terminals.
- Mounting hardware and terminal screws (where applicable) furnished unassembled.
- Mounting hardware consists of nickel plated hex nut and knurled nut.
- Indicating plate is furnished for maintained ON-OFF circuits.

Standard Materials

- Base: phenolic +150 °C (+302 °F)
- Bat handle: nickel plated brass
- Bushing: nickel plated brass

NEC/CEC Certifications and Compliances

- UL Recognized Component
- UL File Number: E335442
- UL Standard: 1054, Guide WORY2
- CSA File Number: 249055
- CSA Standard: C22.2 No. 55
- RoHS Compliant



REELS AND SWITCHES: ORDINARY LOCATION SWITCHES

Apletton® OZGEDNEY

Circuitry			Screw Term.			Solder Term.		
A	B	C	Poles	Catalog Number	Rating	Poles	Catalog Number	Rating
10 Amp								
ON	—	OFF	SPST	4125-0001N	10 Amp, 125 Vac/Vdc 5 Amp, 250 Vac/Vdc 1/4 HP, 125 Vac/Vdc	SPST	4125-0002N	10 Amp, 125 Vac/Vdc 5 Amp, 250 Vac/Vdc 1/4 HP, 125 Vac/Vdc
15 Amp								
ON	OFF	ON	SPDT	91-0001N	15 Amp, 125 Vac 10 Amp, 250 Vac 3/4 HP, 120-240 Vac	SPDT	91-0002N	15 Amp, 125 Vac 10 Amp, 250 Vac 3/4 HP, 120-240 Vac
ON	—	ON	SPDT	92-0001N		SPDT	92-0002N	
(ON)	OFF	(ON)	SPDT	93-0001N		SPDT	93-0002N	
ON	OFF	(ON)	SPDT	93-1001N		SPDT	93-1002N	
(OFF)	—	ON	SPST	93-2001N		SPST	93-2002N	
(ON)	—	OFF	SPST	93-3001N		SPST	93-3002N	
ON	—	(ON)	SPDT	93-4001N	SPDT	93-4002N		
20 Amp								
ON	—	OFF	SPST	90-0001N	20 Amp, 125 Vac 12 Amp, 250 Vac 1 HP, 120-240 Vac	SPST	90-0002N	20 Amp, 125 Vac 12 Amp, 250 Vac 1 HP, 120-240 Vac

() Momentary. Poles: SP = single pole, DP = double pole, ST = single throw, DT = double throw.

Shaded catalog numbers are normally stocked items. All other items are made to order. Contact your local sales representative for pricing.

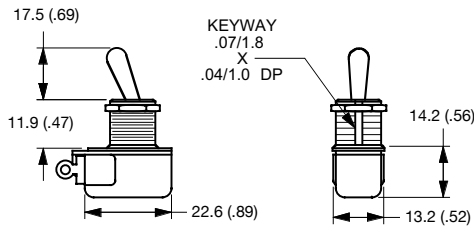
McGill™ 4125/90 Series Single Pole Toggle Switches

NEC/CEC:
Listed for Ordinary Locations

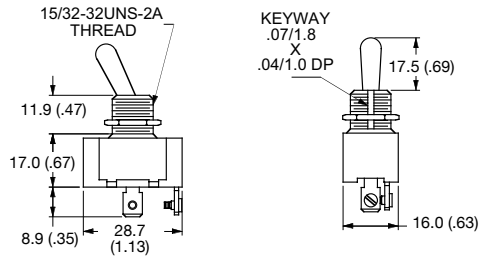
REELS AND SWITCHES: ORDINARY LOCATION SWITCHES

Circuitry			1/4" Q.C. Term.			6" Wire Leads		
A	B	C	Poles	Catalog Number	Rating	Poles	Catalog Number	Rating
10 Amp								
ON	—	OFF	SPST	4125-0003N	10 Amp, 125 Vac/Vdc 5 Amp, 250 Vac/Vdc 1/4 HP, 125 Vac/Vdc	SPST	4125-0004N	10 Amp, 125 Vac/Vdc 5 Amp, 250 Vac/Vdc 1/4 HP, 125 Vac/Vdc
15 Amp								
ON	OFF	ON	SPDT	91-0003N		—	—	—
ON	—	ON	SPDT	92-0003N		—	—	—
(ON)	OFF	(ON)	SPDT	93-0003N	15 Amp, 125 Vac	—	—	—
ON	OFF	(ON)	SPDT	93-1003N	10 Amp, 250 Vac	—	—	—
(OFF)	—	ON	SPST	93-2003N	3/4 HP, 120-240 Vac	—	—	—
(ON)	—	OFF	SPST	93-3003N		—	—	—
ON	—	(ON)	SPDT	93-4003N		—	—	—
20 Amp								
ON	—	OFF	SPST	90-0003N	20 Amp, 125 Vac 12 Amp, 250 Vac 1 HP, 120-240 Vac	—	—	—

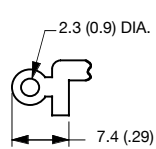
Dimensions in Millimeters (Inches)



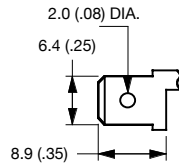
10 Amp Toggle Switch



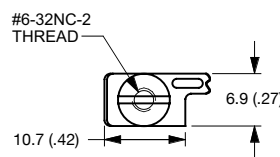
15 & 20 Amp Toggle Switch



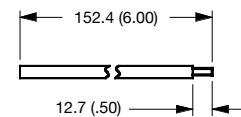
10 Amp Solder Lug Terminal



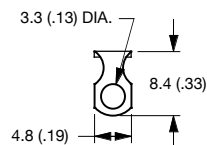
10 Amp 1/4" Q.C. Terminal



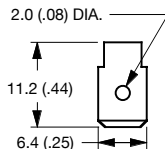
10 Amp Screw Terminal



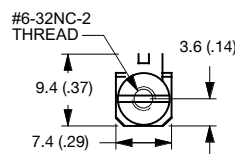
10 Amp Integrated Wire Lead Terminal



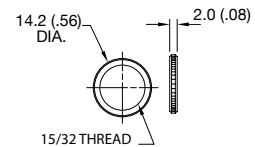
15 & 20 Amp Solder Lug Terminal



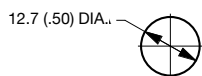
15 & 20 Amp 1/4" Q.C. Terminal



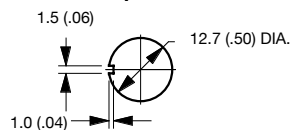
15 & 20 Amp Screw Terminal



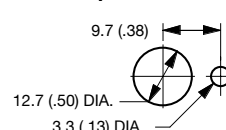
Knurled Nut



Mounting Hole



Mounting Hole With Keyway



Mounting Hole With Locking Ring

() Momentary. Poles: SP = single pole, DP = double pole, ST = single throw, DT = double throw.

Shaded catalog numbers are normally stocked items. All other items are made to order. Contact your local sales representative for pricing.

McGill™ 0121/0140 Series Multi-Pole Toggle Switches

NEC/CEC:
Listed for Ordinary Locations

Applications

- McGill™ full-size, single pole toggle switches are available in several electrical ratings to meet a variety of requirements.
- Ruggedly constructed with metallic toggle and threaded bushing to ensure extended service life.
- Marine, food service, generator, industrial control and office automation markets.
- Appropriate for use in low voltage Vdc applications.

Features

- A variety of circuits are available.
- Available with screw, solder, and 1/4" quick connect terminals.
- Mounting hardware and terminal screws (where applicable) furnished unassembled.
- Mounting hardware consists of nickel plated hex nut and knurled nut.
- Indicating plate is furnished for maintained ON-OFF circuits.

Standard Materials

- Base: phenolic +150 °C (+302 °F)
- Bat handle: nickel plated brass
- Bushing: nickel plated brass



0121-0009N

0121-0010N

NEC/CEC Certifications and Compliances

- UL Recognized Component
- UL File Number: E335442
- UL Standard: 1054, Guide WORY2
- CSA File Number: 249055
- CSA Standard: C22.2 No. 55
- RoHS Compliant

Circuitry			Screw Terminal		Solder Terminal		1/4" Q.C. Terminal		Rating
A	B	C	Poles	Catalog Number	Poles	Catalog Number	Poles	Catalog Number	
15 Amp, 2 Poles									
ON	—	OFF	DPST	0121-0001N	DPST	0121-0017N	DPST	0121-0009N	15 Amp, 125 Vac 10 Amp, 250 Vac 3/4 HP, 250 Vac
ON	—	ON	DPDT	0121-0003N	DPDT	0121-0019N	DPDT	0121-0011N	
(ON)	—	OFF	DPST	0121-0005N	DPST	0121-0021N	DPST	0121-0013N	
ON	—	(ON)	DPDT	0121-0006N	DPDT	0121-0022N	DPDT	0121-0014N	
(OFF)	—	ON	DPST	0121-0043N	DPST	0121-0045N	DPST	0121-0044N	15 Amp, 125 Vac 10 Amp, 250 Vac 3/4 HP, 125-250 Vac
ON	OFF	ON	DPDT	0121-0002N	DPDT	0121-0018N	DPDT	0121-0010N	
(ON)	OFF	(ON)	DPDT	0121-0004N	DPDT	0121-0020N	DPDT	0121-0012N	
ON	OFF	(ON)	DPDT	0121-0007N	DPDT	0121-0023N	DPDT	0121-0015N	
(ON)	ON	ON	SPTT	—	SPTT	—	SPTT	0127-0001N ①	
17 Amp, 3 Pole									
ON	—	OFF	3PST	0140-3020N	3PST	0140-3010N	3PST	0140-3000N	6 Amp, 600 Vac 17 Amp, 125 Vac 12 Amp, 250 Vac 2 HP, 480-600 Vac 3 Phase
(ON)	—	OFF	3PST	0140-3021N	3PST	0140-3011N	3PST	0140-3001N	6 Amp, 600 Vac 17 Amp, 125 Vac 12 Amp, 250 Vac 1-1/2 HP, 240 Vac 1,2 or 3 Phase
ON	—	(OFF)	3PST	0140-3022N	3PST	0140-3012N	3PST	0140-3002N	
ON	—	ON	3PDT	0140-3024N	3PDT	0140-3014N	3PDT	0140-3004N	2 HP, 480-600 Vac 3 Phase
ON	—	(ON)	3PDT	0140-3025N	3PDT	0140-3015N	3PDT	0140-3005N	
ON	OFF	ON	3PDT	0140-3023N	3PDT	0140-3013N	3PDT	0140-3003N	6 Amp, 600 Vac 17 Amp, 125 Vac 12 Amp, 250 Vac 1 HP, 125 Vac
ON	OFF	(ON)	3PDT	0140-3026N	3PDT	0140-3016N	3PDT	0140-3006N	1-1/2 HP, 250 Vac 1,2 or 3 Phase
(ON)	OFF	(ON)	3PDT	0140-3027N	3PDT	0140-3017N	3PDT	0140-3007N	

() Momentary. Poles: SP = single pole, DP = double pole, ST = single throw, DT = double throw, TT = triple throw.
① Not UL or CSA Listed.

Shaded catalog numbers are normally stocked items. All other items are made to order. Contact your local sales representative for pricing.

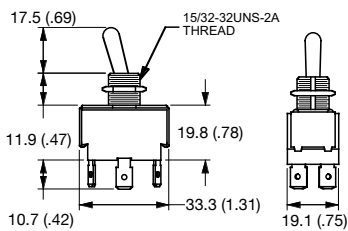
McGill™ 0121/0140 Series Multi-Pole Toggle Switches

NEC/CEC:
Listed for Ordinary Locations

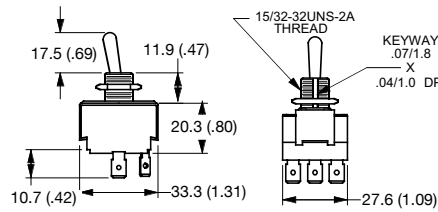
REELS AND SWITCHES: ORDINARY LOCATION SWITCHES

Circuitry			Screw Terminal		Solder Terminal		1/4" Q.C. Terminal		Rating
A	B	C	Poles	Catalog Number	Poles	Catalog Number	Poles	Catalog Number	
15 Amp, 4 Pole									
ON	—	OFF	4PST	0140-4020N	4PST	0140-4010N	4PST	0140-4000N	
(ON)	—	OFF	4PST	0140-4021N ①	4PST	0140-4011N †	4PST	0140-4001N ①	15 Amp, 125 Vac
ON	—	(OFF)	4PST	0140-4022N ①	4PST	0140-4012N †	4PST	0140-4002N ①	10 Amp, 250 Vac
ON	—	ON	4PDT	0140-4024N	4PDT	0140-4014N	4PDT	0140-4004N	3/4 HP, 250 Vac
ON	—	(ON)	4PDT	0140-4025N	4PDT	0140-4015N	4PDT	0140-4005N	1,2 or 3 Phase
ON	OFF	ON	4PDT	0140-4023N	4PDT	0140-4013N	4PDT	0140-4003N	15 Amp, 125 Vac
ON	OFF	(ON)	4PDT	0140-4026N ①	4PDT	0140-4016N †	4PDT	0140-4006N ①	10 Amp, 250 Vac
(ON)	OFF	(ON)	4PDT	0140-4027N	4PDT	0140-4017N	4PDT	0140-4007N	3/4 HP, 125-250 Vac
									1,2 or 3 Phase

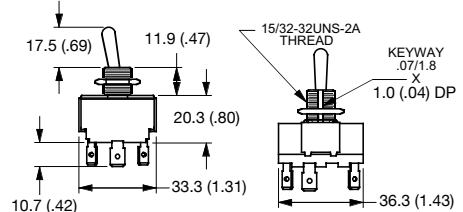
Dimensions in Millimeters (Inches)



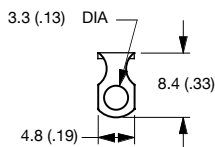
15 Amp, 2 Pole



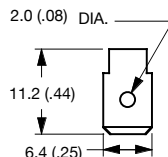
17 Amp, 3 Pole



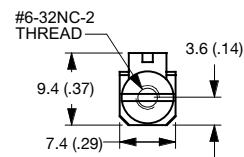
17 Amp, 4 Pole



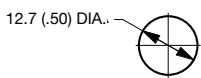
Solder Lug Terminal



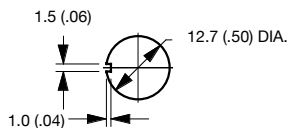
1/4" Q.C. Terminal



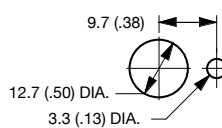
Screw Terminal



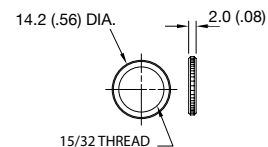
Mounting Hole



Mounting Hole With Keyway



Mounting Hole With Locking Ring



Knurled Nut

() Momentary. Poles: SP = single pole, DP = double pole, ST = single throw, DT = double throw.
① Not UL or CSA Listed.

Shaded catalog numbers are normally stocked items. All other items are made to order. Contact your local sales representative for pricing.

McGill™ Momentary Contact Pushbutton Switches

NEC/CEC:
Listed for Ordinary Locations

Applications

- Single pole, high amperage – suitable for back panel applications.

Features

- Rugged switch mechanism ensures long life.
- Screw terminal.
- Mounting hardware consists of nickel plated hex nut and knurled nut.

Standard Materials

- Base: phenolic +150 °C (+302 °F)
- Bushing: nickel plated brass
- Push button: black plastic cap

NEC/CEC Certifications and Compliances

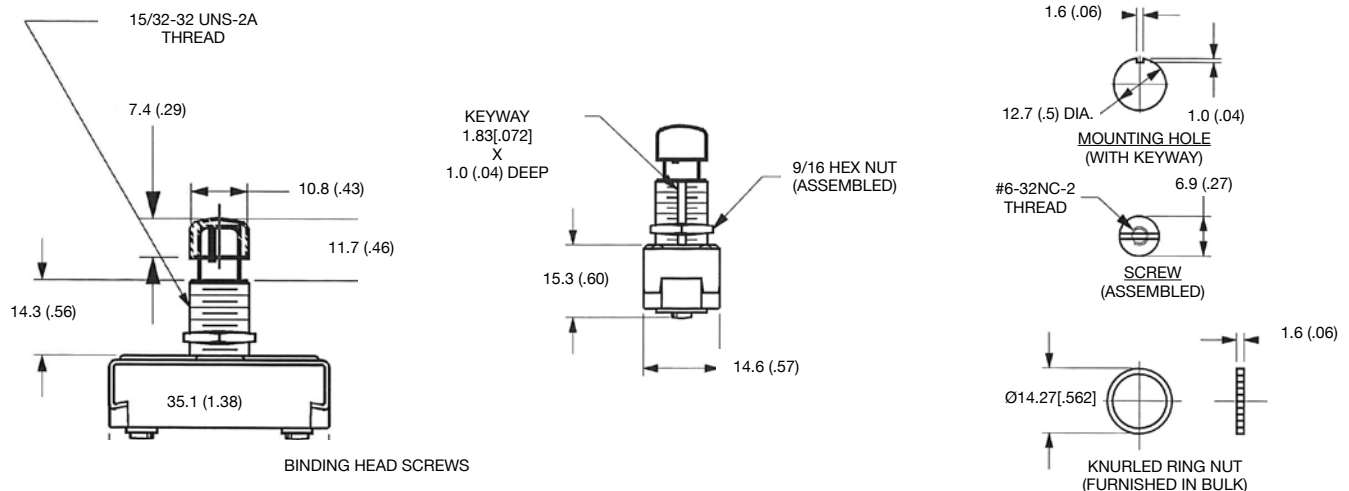
- UL Recognized Component
- UL File Number: E335442
- UL Standard: 1054, Guide WORY2
- CSA File Number: 249055
- CSA Standard: C22.2 No. 55
- RoHS Compliant



REELS AND SWITCHES: ORDINARY LOCATION SWITCHES

Circuitry			Poles	Ratings	Terminal Type	Catalog Number
A	B	C				
OFF	—	(ON)	SPST	15 Amp, 125 Vac 10 Amp, 250 Vac	Screw	100N

Dimensions in Millimeters (Inches)











() Momentary.

McGill™ Switches – Parts and Accessories

NEC/CEC:
Listed for Ordinary Locations

REELS AND SWITCHES: ORDINARY LOCATION SWITCHES

	Description	Catalog Number
	Indicating plate ON-OFF	1650
	Knurled nut .563" O.D. x .078" thick, 15/32" thread	1575
	Hex nut 15/32" thread x .073" thick	1610-2
	Internal tooth lockwasher .472" I.D. x .593" O.D.	1957
	Locking ring .722" O.D. x .478" I.D. x .031" thick	25494
	Rubber boot with nut for toggle switches, 15/32" thread	0090-9988
	Rubber boot for toggle switches, snaps over toggle and nut	0090-9986
	Rubber boot with nut for pushbutton switches, 15/32" thread	0090-9973

Appleton® OZGEDNEY