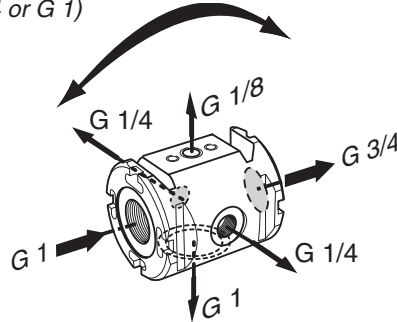
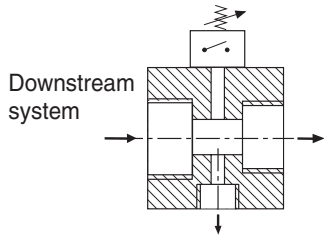


PRESENTATION

This by-pass module is designed to fit onto the end of an air service system. It can be used for:

- assembling a pressure switch to control the compressed air pressure (subbase-mounted)
- drawing off air through a by-pass (G 1/4 or G 1)
- connecting the main downstream system (G 3/4 or G 1)



CHOICE OF EQUIPMENT

description	by-pass port	main outlet port	code	
Modulair 160 range by-pass module designed to receive a pressure switch	G 1/4 or G 1	G 3/4 or G 1	34307020	May be fitted with all Modulair 160 range products

OTHER PRODUCT OPTIONS

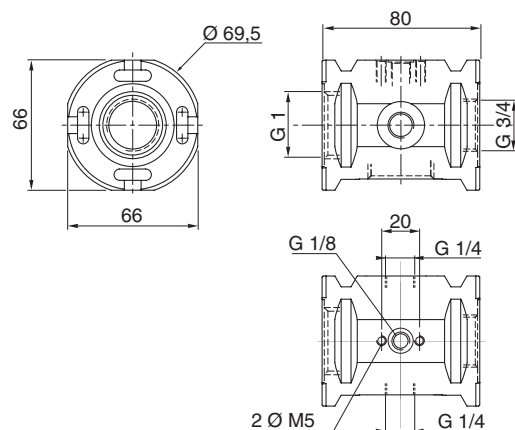
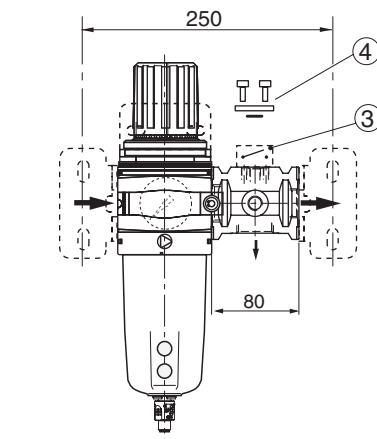
- [Electronic pressure switch](#)

ACCESSORIES (see following pages)

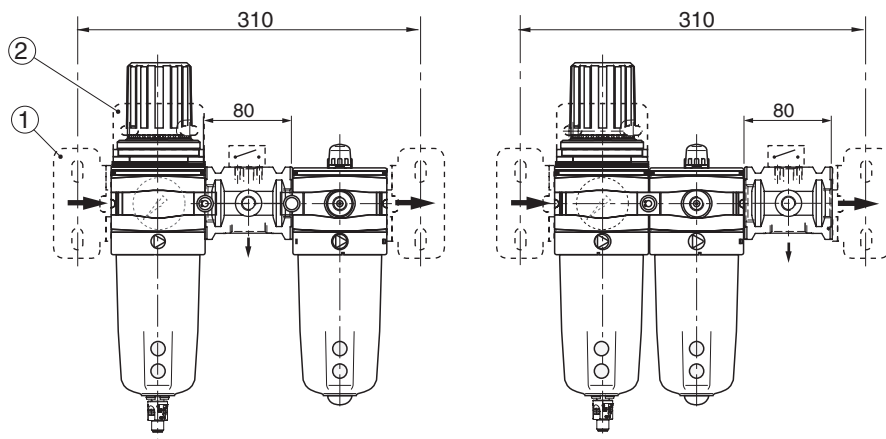
DIMENSIONS AND WEIGHTS - G 3/4 - G 1 VERSIONS

Weight: 0,55 kg

Standard assembly



Assembly before or after a lubricator



- ① Mounting with 2 side brackets (accessories)
- ② Mounting with 1 top bracket (accessory)
- ③ Fitting of pressure switch
- ④ Blanking plate for G 1/8 port, code: **88100073**