

GENERAL

FLUID	: Air or neutral gas, filtered, lubricated or not
PRESSURE	: 2 to 12 bar
TEMPERATURE	: - 10°C, + 60°C
FLOW (Qv at 6 bar)	: see table below
PILOT PRESSURE	: the pilot pressure must be equal or superior to the pressure in the valve

CONSTRUCTION

Body: light alloy
Sealings: polyurethane (PUR) and nitrile (NBR)
Mating surface to CNOMO 06-05-81/82 and AFNOR NF E49067/068
Internal parts: steel, light alloy and acetal resin (POM)



SPECIFICATIONS

FUNCTION NC Normally closed at rest								P = 1 = Pressure U = 2 = Outlet E = 3 = Exhaust		
Pipe size	Orifice size (mm)	Flow		Fluid pressure (in bar)		Pilot pressure (in bar)		2 catalogue numbers		
		at 6 bar l/min (SRA)	KV coeff.	min.	max.	min.	max.	VALVE	+	AIR PILOT
G 1/4	8	700	10	2	12	2	12	26190067	+	88126110
G 3/8	12	1750	25	2	12	2	12	26290352	+	88126110

FUNCTION NO Normally open at rest								P = 1 = Pressure U = 2 = Outlet E = 3 = Exhaust		
Pipe size	Orifice size (mm)	Flow		Fluid pressure (in bar)		Pilot pressure (in bar)		2 catalogue numbers		
		at 6 bar l/min (SRA)	KV coeff.	min.	max.	min.	max.	VALVE	+	AIR PILOT
G 1/4	8	700	10	2	12	2	12	26190068	+	88126110
G 3/8	12	1750	25	2	12	2	12	26290353	+	88126110


SUBBASES

Valve mating surface	DESIGNATION			catalogue number	Reference
	Type of subbase	Pipe size	Type of port		
CNOMO 06.05.81 AFNOR E49067 G 1/4	SINGLE (1)	G 1/4	side	35300049	-
	JOINABLE (1)	G 1/4	side	35300057	-
CNOMO 06.05.82 AFNOR E49068 G 3/8	SINGLE	G 3/8	side	35700002	P/DMP 302
	JOINABLE	G 3/8	bottom	35700010	PJ02/DMP 302

(1) These subbases can be directly mounted on symmetrical EN 50022 - AFNOR NF C63015 standard rail using 1 mounting clip (clips sold in packets of 10 - cat.no. **33400036**).

TO ORDER

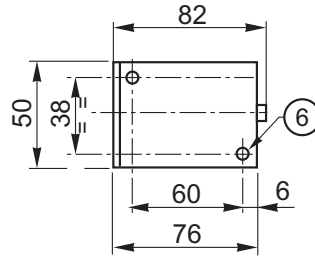
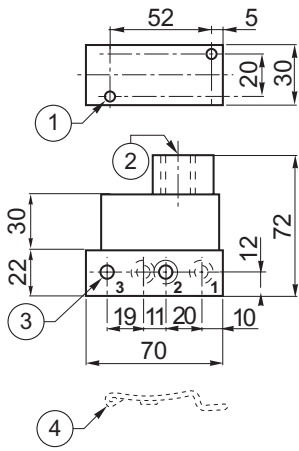
The valve, air pilot unit and subbase must be ordered separately to be mounted by customer: please specify the quantity and catalogue number of each component required.

DIMENSIONS (mm), WEIGHT (kg) 

VALVE ON SINGLE SUBBASE

G 1/4 (series 261)
Subbase: catalogue number **35300049**
Weight: 0,300 kg

G 3/8 (series 262)
Subbase: catalogue number **35700002**
Weight: 0,650 kg



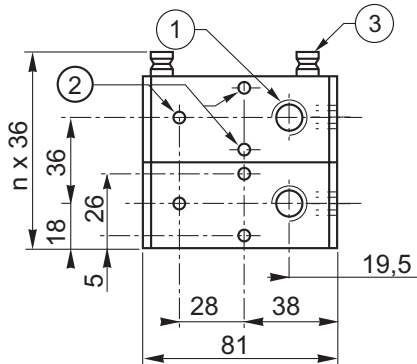
Ports
1 : Pressure
2 : Outlet
3 : Exhaust

- ① 2 mounting holes Ø 4,5 mm (series 261)
- ② pilot port: G 1/4
- ③ 4 ports: G 1/4
- ④ Clips
- ⑤ 3 ports: G 3/8
- ⑥ 2 mounting holes Ø 5,5 mm (series 262)

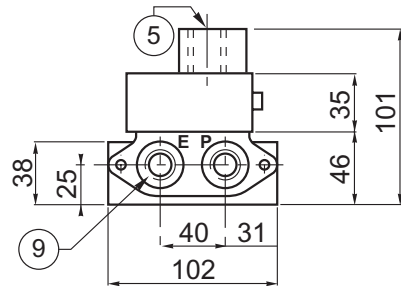
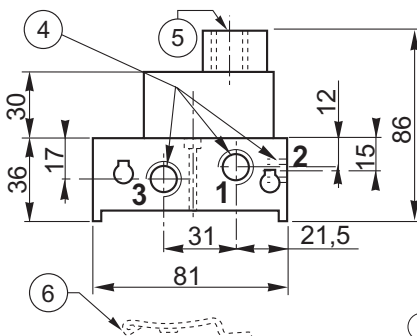
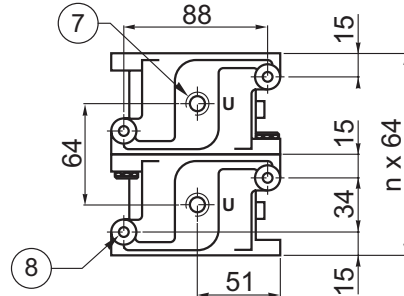
VALVE ON JOINABLE SUBBASE

G 1/4 (series 261)
Subbase: code **35300057**
Weight: 0,350 kg

G 3/8 (series 262)
Subbase: code **35700010**
Weight: 0,800 kg



n = number of subbases



- ① To use outlet "2" G 1/4 at bottom, remove the protection
- ② 3 mounting holes Ø 4,5; spot facing Ø 7,5; prof. 6 mm
- ③ Joinable subbases assembled with joining units and secured with counter-sunk locking screws
- ④ 3 ports: G 1/4
- ⑤ pilot port: G 1/4
- ⑥ Clips
- ⑦ 1 port: G 3/8
- ⑧ 2 mounting holes Ø 7 mm
- ⑨ 2 ports: G 1/2