

# FB2200 Flow Computer

The FB2200 flow computer measures and controls oil and gas flow for up to two meter runs. The FB2200 supports gas differential pressure, gas linear meters, and liquid linear meters. With a rugged housing and multiple I/O, communications, and power options, the FB2200 provides accurate and reliable flow measurement in the harshest conditions.

The FB2200 is part of Emerson's new field mount flow computer family that delivers a convenient approach to remote oil and gas sites by addressing challenges to power, safety, measurement reliability, and accuracy.

Designed for simplified configuration and ease of use, the FB2200 is also highly configurable and supports flow and fluid property calculations right out of the box. The flexible design provides exactly what is required for each application. The FB2200 can also be equipped with FBxWifi™ functionality allowing you to configure and retrieve site data more safely than before.

The new flow computers also come with the latest Rosemount™ sensor technology, providing high accuracy differential pressure and static pressure measurement with long term stability to help improve measurement confidence and production efficiency.

## Features

The FB2200 flow computer includes the following key features:

- Increased measurement confidence and reduced measurement uncertainty
- Industry leading differential and static pressure measurement including 0.05% of reading accuracy and 5-year stability
- High accuracy temperature measurement including curve matching via the Callendar-Van Dusen equation
- Reduced need to re-calibrate resulting in less time spent on site
- Simplified configuration and set-up with the FBxConnect™ configuration software tool
- Flexible design with configurable I/O and communication ports to meet site needs
- Standard firmware supports global calculations for orifice, cone, Venturi, nozzle, conditioning orifice, turbine, PD, Auto-Adjust and Coriolis

- Standard firmware supports Property Calculations for Natural Gas, Pure Gas, Crude Oil, and NGL/LPG
- Flexible PID control with override complimented by configurable logic blocks and effects
- Easy to interface to 1 or 2 remote 4088B MVT transmitters (DP, P & T) by using one of the 3 onboard serial ports
- Simple selection of engineering units to suit local requirements
- Global Hazardous Area Approvals – Class 1 Div 2, ATEX & IEC Ex ec
- Corrosion resistant aluminum and fiberglass enclosure options include radio mounting bracket and battery box for solar use
- FBxWifi allows secure local wireless access from safe area
- Ease of integration with support for Modbus, ROC, BSAP and DNP3 protocols
- Enhanced security helps prevent unauthorized access
- Enhanced alarming and historical data storage and improved audit trail
- Superior performance gives better control of your operations and maximizes profits
- API 21.1 compliant
- Support of Active Directory



FB2200

## FBxWifi™

The optional FBxWifi communications enables you to connect your laptop or tablet to the flow computer through a secure wireless connection. Once connected wirelessly, you can use FBxConnect configuration software to view process values, edit configuration parameters, and collect logs stored in the flow computer – all from within the safe area.

## Firmware

The base firmware in the FB2200 flow computer comes with all the calculations, features and functionality required to provide consistent measurement with increased confidence for oil and gas metering and control. The flow computer measures static pressure, differential pressure or pulse frequency, and temperature for up to two meter runs.

The flow computer performs flow calculations based on the following set of user selectable global calculations. To fully satisfy local requirements, the engineering units are fully user-selectable between either U.S. or metric, or a combination of each.

The firmware supports the following flow calculations:

- AGA 3 1992/2013 (volume, mass/density, and mass/relative density)
- ISO 5167 1991/1998/2003 (orifice, Venturi, and nozzle)
- Rosemount 405C Compact Orifice and 1595 Conditioning Orifice Plate
- McCrometer V-Cone® and Wafer Cone®
- NUFLO™ Cone
- GOST 8.586 2005 (Orifice)
- AGA 7 2006 (pulsed turbine, PD, and ultrasonic)
- AGA 11 2013 (Coriolis pulses)
- Auto-Adjust™ meter
- AGA 9 (Multipath Ultrasonic)
- API 20.1 Liquid Allocation Measurement
- API 12.2 Calculation of Petroleum Quantities

The firmware supports the following property calculations:

- AGA 8 1994 (Detailed, Gross 1, and Gross 2)
  - AGA 8 2017 Part 1 and Part 2 (GERG 2008)
- Note:** AGA8 Part 2 / GERG provides support for the following pure gases (100%) as well as any mixtures (0% to 100%): Nitrogen, Carbon Dioxide, Hydrogen, Oxygen, Carbon Monoxide, Water Vapor, Hydrogen Sulfide, Helium, and Argon

- Speed of Sound calculated via AGA 10 and AGA 8 2017 Part 2
- NX-19 1962, MOD, VDI/VDE 2040, Miller
- ISO 12213 2006 (parts 2 and 3)
- SGERG 1991 (Std., Alt 1, Alt 2, and Alt 3)
- GOST 30319 2015 (Part 3)
- GPA 2172 2009 (including saturated vapor calculation)
- ISO 6976 1995 (superior and inferior, incorporating Technical Corrigendum 2 [1997] and 3 [1999])
- AGA 5 2009
- API 11.1 Temperature and Pressure correction for Crude Oils, Refined Products, and Lubricating Oils
- GPA 8217/API 11.2.4 Table E (formerly TP-27) Temperature Correction for NGL and LPG
- GPA 8117/API 11.2.5 (formerly TP15) Vapor Pressure and API 11.2.2, API 11.2.2M, API 11.1 Pressure Correction for NGL and LPG

The firmware accepts gas density, base density, and specific gravity from any of the following sources:

- Up to 2 gas chromatographs (GC)
- Fixed value
- Periodic download from SCADA
- An external signal, such as analog input
- Calculated based on gas composition
- For liquid meters, the flow meter signal can be provided by a pulse input, an analog flowrate, or a direct accumulation from the meter electronics.

The firmware includes the following flow rates and totals for gas DP and gas linear meters:

- Uncorrected volume
- Corrected (standard) volume
- Mass
- Energy
- Integral Value (DP meter) or Pulse Totals (linear meter)

In addition to the normal totals, the firmware also supports the following fault totals which can be enabled for a gas meter. The conditions to trigger the fault totals are user configurable:

- Uncorrected volume fault totals
- Corrected volume fault totals
- Mass fault totals
- Energy fault totals

The firmware includes the following flow rates and totals for API 12.2 and API 20.1 (low water):

- Indicated Volume / Mass
- Gross Volume

- Gross Standard Volume
- Net Standard Volume
- Water Volume
- Mass
- Flow time
- Pulses

The firmware includes the following flow rates and totals for API 20.1 (high water):

- Indicated volume / mass
- Gross Volume
- Oil (Unshrunk and Theoretical Production)
- Natural Gas Liquid
- Flashed Gas
- Water (Uncorrected and Corrected Volume)
- Flow Time
- Pulses

**Note:** The firmware can accept a water cut from an on-line analyzer or from an off-line analyzer corrected to metering conditions.

The firmware supports a fallback mode when a process variable's value is questionable. The fallback options can be one of the following:

- Use last good value
- Use a fixed fallback value

## Alarms and Events

The flow computer supports extensive alarming capability to enhance operational efficiency and improve the audit trail. Alarms are pre-allocated to meter runs and stations for standard values such as pressure, temperature, differential pressure, or frequency as well as meter run and station flow rates. In addition to these standard alarms, the FB2200 provides a number of user alarms that you can assign to other database parameters simply by "filling in the blanks" in user alarm templates in the FBxConnect configuration tool. Storage is provided for the most recent 1000 alarms in the alarm log.

The event log stores the significant events during operation and can be configured to either store all events in a single log of 2000 events or the user can select to store the metrology/legal events in a separate log from the operational events. With the latter option the event log capacity is 1000 metrology events and 1000 operation events.

### Automated Checksum Verification (ACV)

As an extended auditing feature, the flow computer provides an option to perform online integrity checks

by generating firmware and configuration checksums. The checksum is a 32-bit CRC number which is routinely calculated and compared against the last verified checksum. If a newly calculated checksum does not match with the last verified checksum, the system generates a checksum error and the flow computer goes into an unverified state.

## History

The FB2200 features expanded and flexible history capability to ensure measurement confidence and meet the increasing demands for secure data.

The flow computer has four standard periodic logs available providing hourly, daily, weekly, and monthly history. These logs can contain up to 110 variables including flow weighted average data, totals, and gas composition. For averaging, the FB2200 supports either flow weighted or flow dependent which can be linear or formulaic.

For gas meter averages, you can choose between flow-dependent linear per API Chapter 21.1 (2013) or flow-dependent formulaic, flow-weighted linear, or flow-weighted formulaic averages per API Chapter 21.1 (1993). Liquid meter averages are flow-weighted averages per API Chapter 21.2 (2000).

The default history in the FB2200 can store the following standard periodic logs for 60 variables. With the flexible history design, the number of variables and the time duration for different periodic logs can be adjusted to meet the application requirement.

- |                |                          |
|----------------|--------------------------|
| ▪ Hourly logs  | 62 days or 1500 records  |
| ▪ Daily logs   | 12 months or 365 records |
| ▪ Weekly logs  | 12 months or 52 records  |
| ▪ Monthly logs | 60 months or 60 records  |

**Note:** This is only the initial default history. With the flexible history design, the number of variables and the time duration for different periodic logs can be adjusted to meet the application requirement.

The flow computer also supports two user periodic logs, the duration or period of each is user selectable between 1 second and 200 hours. The first user periodic logs include 10 parameters over 4,000 periods and the second contains 20 parameters over 500 periods.

The flow computer with FBxConnect provides pre-formatted EFM reports for hours and days. The format of the reports can be .csv, .pdf, or secure .pdf.

In addition to the above reports, the flow computers can produce FLOWCAL-compliant .cfx files through the FBxConnect tool as well as calibration reports which contain U.S. Bureau of Land Management specific parameters.

## Power Options

You can power the FB2200 with an external DC power supply or from an internal rechargeable battery linked to a solar system. The internal battery can power the device for up to 45 days depending on the application.

**Note:** The internal battery option is available with Class 1 Div 2 approval only.

## Housing Options

The FB2200 has two housing options, both suitable for hazardous area installation. The corrosion-resistant aluminum and the fiberglass enclosures each protect the electronics from physical damage and harsh environments. The enclosures include a battery box to house a rechargeable battery for use with solar systems and an optional radio mounting bracket. The lockable door also provides a viewing window for the optional LCD. The door can also be fitted with an optional security switch, to generate an alarm each time the door is opened.

## Hazardous Area Certifications

The FB2200 has the following Global Hazardous Area Approvals:

- North American certification for Class I Division 2 Groups A, B, C, and D.
- ATEX and IECEx certification for Ex ec, Zone 2 hazardous locations.

## Configuration Software

Emerson’s FBxConnect tool is a Microsoft® Windows®-based tool that enables you to easily monitor, configure, service, and calibrate the FB2200 flow computer. Designed for ease-of-use, FBxConnect provides at-a-glance monitoring, quick access to commonly performed tasks, and a guided configuration process to quickly get your measurement up and running.

The wizard-driven approach simplifies configuration and ensures that you only need to enter the required data once. Whether you are an experienced engineer or a new technician, you can be confident configuration is done correctly the first time.

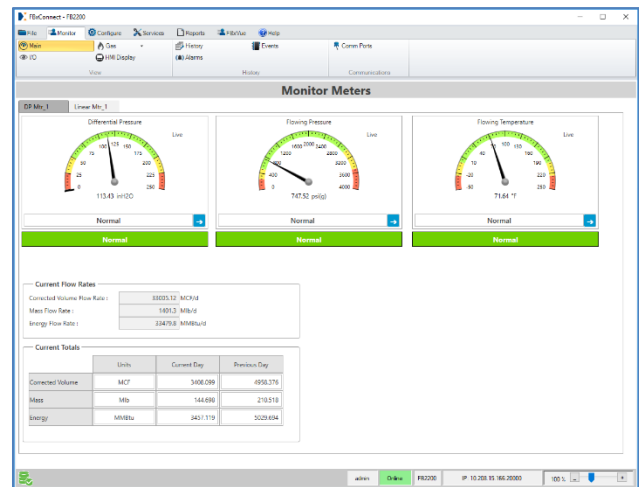
FBxConnect runs on a Windows PC or tablet. You connect securely to the flow computer using one of its serial ports, Ethernet port, or optionally through the FBxWifi wireless connection. For more information, refer to product data sheet *FBxConnect* (D301789X012).

## Security

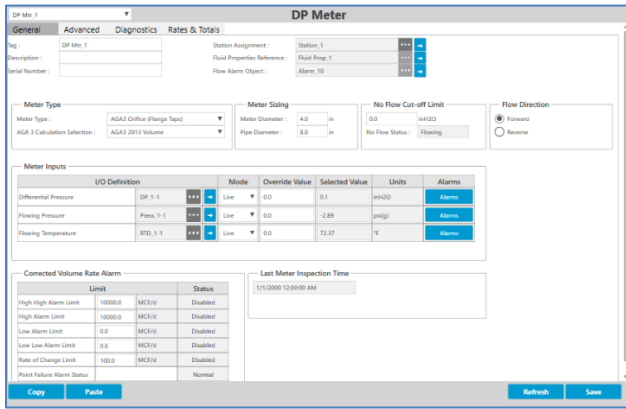
To secure your valuable process and data, the FB2200 provides multi-level role-based access, user account authentication, and password encryption.

The system administrator can set a minimum password length (up to 20 characters) that accommodates lower case, upper case, numbers, and symbols, as well as configure a user lock-out feature that locks out invalid users after a defined number of failed login attempts.

Additionally, the DNP3 protocol lends itself to an added layer of security through Secure Authentication (SA). SA version 5 (SAv5) is available in the FB2200 Flow Computer as a selection in the firmware. SAv5 authenticates the devices which significantly improves resistance to outside influence.



Monitor Screen



DP Meter

## Integral Pressure Sensor Options

The flow computer can be supplied with one of three sensor options to suit your metering needs:

- Integral Multivariable Sensor (MVS) measuring both static pressure and differential pressure (DP)
- Integral inline static pressure sensor
- NO integral pressure sensor – external transmitters are used

The NO integral sensor option is typically used at locations where regulations classify the location of the pressure measurement sensor as either C1 D1 or ATEX/IEC Exd Zone 1. In this instance, the FB2200 without an integral sensor can be mounted in the C1 D2 / Zone 2 area and be connected via a serial port to 1 or 2 remote 4088B MVT transmitters.

If the FB2200 has an integral sensor, it can communicate with one remote 4088B transmitter for dual meter run applications.

Enabled by superior sensor technology and engineered for optimal flow performance, the integral pressure sensor on the flow computer delivers unparalleled accuracy, over a wide range of operating conditions, and industry leading stability to ensure you meet standards and regulations.

Pressure sensors on the flow computer can measure DPs of up to 1000” of water / 2500 mBar and static pressures up to 4000 psi / 275 bar in either gauge or absolute with accuracies up to 0.05% of reading.

## Temperature Input (RTD/PRT)

With industry-leading measurement accuracy, the temperature measurement of the FB2200 ensures that you minimize your measurement uncertainty in all operating conditions. The input accepts 2-, 3-, or 4-wire connections reducing any field wiring induced errors and also supports sensor curve matching using the optional Callendar-Van Dusen constants to define the unique characteristics of the RTD/PRT to further improve process temperature measurement uncertainty.

The FB2200 flow computer’s superior static pressure, DP, and temperature measurement performance and stability ensures you meet standards and regulations so you can avoid fines, penalties, leaseholder disputes, and lost revenue.

## Inputs and Outputs

### Base I/O

In addition to the integral pressure sensor, the FB2200 includes the following I/O points in the base unit:

- Two analog channels – individually software selectable analog inputs (AI) or analog outputs (AO)
- Two discrete channels – individually software selectable discrete inputs (DI), discrete outputs (DO), or pulse inputs (PI)
- One RTD/PRT (2-, 3-, or 4-wire)

Analog Inputs (AI) are individually software configurable for either 4 to 20mA or 1 to 5 Vdc operation.

To keep measurement uncertainty at a minimum when external transmitters are being used, both the AI and AO channels have industry-leading measurement accuracy with an excellent performance over a wide ambient temperature range.

Each Discrete Input (DI) channel can also be software configured to function as a latched DI.

The Discrete Output (DO) channels are solid-state, normally open switches rated at 500 mA, enough to directly drive most samplers. Each DO channel can be software configured as a latched, toggled, momentary, timed duration output (TDO), or scaled pulse output.

The PI channels are most commonly used to interface with turbine meters, Coriolis meters, ultrasonic meters, and Positive Displacement (PD) meters. The high-speed input supports signal up to 10.5 KHz.

### Expansion I/O

In addition to the base I/O provided, the FB2200 I/O capability can be increased by adding two options. The expansion below provides 2500 Vdc isolation from the CPU.

- 8-channel isolated expansion board, providing 4 channels that are individually software-selectable as either analog inputs or analog outputs and 4 channels that are individually selectable as discrete inputs, discrete outputs, or pulse inputs.
- 6-channel isolated expansion board, providing 2 channels that are individually software-selectable as either analog inputs or analog outputs and 4 channels that are individually selectable as discrete inputs, discrete outputs, or pulse inputs.

**Note:** The 8-channel expansion board option must be added first. The 6-channel expansion board can

only be used in units that already have the 8-channel board included.

- Two optional relays allow for additional loads up to 30 Vdc at 6A. 24 Vdc is required to energize the relays or an expansion I/O option must be selected, which enables 24 Vdc loop.

**Note:** This option is available **only** with Class 1 Div 2 approval.

## Control

The FB2200 optionally supports control functions including PID control, basic programming through action blocks, effects, and math blocks.

**PID Control** – The FB2200 supports up to three Proportional, Integral, and Derivative (PID) control loops. Each PID instance supports a primary and an override loop. Each loop has its own user-defined input, output, and override capability.

Typically, a PID control maintains a process variable at set point. If you configure a PID override control, the primary loop is normally in control of the control device but the override loop can take over control of the process if required. A typical example would be primary flow control with a pressure override.

**Action Blocks** – The FB2200 supports up to 30 action blocks. Action blocks are used in conjunction with effect blocks to monitor a configured condition and to perform an action (effect) when the logic is “true.” An action block consists of a user defined Boolean logic statement with two variables. These variables can either be live parameter values or constants.

Multiple action blocks can be chained together to create more complex logic. Each action block includes multiple bypasses, which can temporarily halt the action to be taken for maintenance and safety.

**Effects** – The FB2200 supports up to ten effects. Effects cause an action to occur when the result of one or more action blocks is active (“true”). Multiple action blocks can cause the same effect, such as shutting a valve or enabling an alert beacon.

You configure an effect by defining an output parameter and the values to write to that parameter when the effect is either active or inactive. You can also configure an active effect to be self-clearing or to require a manual reset.

**Math Blocks** – The FB2200 supports up to ten math blocks. Math blocks perform mathematical equations using user-defined variables as inputs. Each math block consists of up to four user-defined variables,

three mathematical calculations, and the results of each calculation.

The result of the math block equation can be assigned to a user data point, to drive an output point, to a calculated value or to any other data base parameter. Mathematical calculations also support standard math functions (POW, EXP, LOG, SQRT, etc.), constants, and operators.

FBxConnect checks each calculation string for the correct syntax and uses double precision floating point math throughout the calculation.

**User Data Points** – User data points are configurable storage areas in the data base. These user data points can store the constants / variables that are inputs to the math blocks in addition to the calculated results of math blocks. They can also be used to represent interim calculation values or values of additional inputs or outputs etc. There are eight user data instances, each with a tag and description, 30 integers (split between byte, short and long), 20 single floating points, and 10 double floating points, providing storage for up to 480 variables.

## Communications

The FB2200 provides up to five user-selectable communications ports: three serial ports, one Ethernet port, and one optional port that supports FBxWifi (802.11 b/g) communications using DNP3 protocol.

- COM1 – 4-wire serial communications. Software selectable for EIA-232 (RS-232), EIA-422 (RS-422), or EIA-485 (RS-485) operation.
- COM2 – 2-wire serial communications. Software selectable for EIA-232 (RS-232) or EIA-485 (RS-485) operation.
- COM3 – 2-wire serial communications. Software selectable for EIA-232 (RS-232) or EIA-485 (RS-485) operation.
- COM4 –FBxWifi (802.11 b/g) communications (optional).
- COM5 – Ethernet. 10/100BASE-T twisted pair. Supports up to seven sessions.

## Communications Protocols

The FB2200 supports multiple communications protocols, including DNP3, Modbus master and slave (ASCII and RTU), BSAP, and ROC on the three serial ports. In addition, the Ethernet port supports RTU Modbus over TCP/IP protocol (master and slave), DNP3/IP, ROC and BSAP.

## FBxNet™

FBxNet is a secure, easily configurable, peer-to-peer communication network for exchanging data between Emerson FB3000 RTUs and FB1200 and FB2200 flow computers over an Ethernet connection. FBxNet supports subscriber and publisher devices, where publishers provide data to their subscribers. The FB3000 RTUs and FB1200 and FB2200 flow computers can be publishers; only an FB3000 can be a subscriber. For more information, refer to product data sheet *FBxNet* (part D301905X012).

## Mounting Options

The FB2200 supports direct mounting to a manifold on the pipeline, simple wall mounting, or mounting on a two-inch pipe with the stainless steel pipe mounting kit.

## FB2200 Flow Computer

CPU Module			
Processor	The central processing unit (CPU) of the flow computer is an NXP® Kinetis® K61 series CPU with an ARM® Cortex® M4 processor.		
Memory	SRAM	8 MB, holds current states of all variables and historical archives	
	Flash	128 MB, holds firmware image and configuration files	
Clock	Type	Real-time clock	
	Accuracy	0 °C to 40 °C	60 seconds/year
		-40 °C to 80 °C	110 seconds/year
Watchdog Timer	1175 milliseconds		
Diagnostics	Battery voltage monitor, external voltage monitor, SRAM battery status		
Communications			
Ports	COM1	4-wire serial communications. Software selectable for RS-232, RS-422, or RS-485 operation.	
	COM2	2-wire serial communications. Software selectable for RS-232 or RS-485 operation.	
	COM3	2-wire serial communications. Software selectable for RS-232 or RS-485 operation. Can communicate to 4088B transmitters.	
	COM4	FBxWifi (optional) 802.11 b/g.	
	COM5	Ethernet 10/100 Base-T supports up to 7 sessions (1 Modbus Master, up to 3 DNP3, others selectable between ROC, BSAP, and Modbus Slave)	
Protocols	Serial ports support DNP3, Modbus slave (ASCII or RTU), BSAP, and ROC. The Ethernet port supports Modbus TCP/IP protocol (master and slave), DNP3, BSAP, and ROC protocol. Wi-Fi supports DNP3 DNP3 includes level 3 protocol subset		
Base I/O			
The base FB2200 includes the following I/O:			
<ul style="list-style-type: none"> <li>▪ 2 channels that are individually software selectable as either analog inputs or analog outputs</li> <li>▪ 2 channels that are individually software selectable as either discrete inputs, discrete outputs, or pulse inputs</li> <li>▪ 1 process temperature input (RTD/PRT)</li> </ul>			
Expansion I/O (optional)			
8-Channel I/O Board	Provides 8 I/O channels in addition to the base I/O. Expansion I/O features 2500 Vdc isolation from CPU and ground.		
	<b>Note:</b> Specifications for expansion I/O channels are identical to base I/O channels except where noted.		
	Analog Inputs/ Analog Outputs	Quantity	4 channels Each channel is individually software selectable as an AI or AO.

		AO Sourcing	Internal, isolated 24 Vdc
	Discrete Inputs/ Discrete Outputs/ Pulse Inputs	Quantity	4 channels Each channel is individually software selectable as a DI, DO, or PI.
		DO Switches	500 mA high and low-side
6-Channel I/O Board	Provides 6 additional I/O channels to a unit with the 8-channel I/O board fitted. Expansion I/O features 2500 Vdc isolation to main CPU. <b>Note:</b> Specifications for expansion I/O channels are identical to base I/O channels except where noted.		
	Analog Inputs/ Analog Outputs	Quantity	2 channels Each channel is individually software selectable as an AI or AO.
		AO Sourcing	Internal, isolated 24 Vdc Loop Supply Output – 200mA maximum load
	Discrete Inputs/ Discrete Outputs/ Pulse Inputs	Quantity	4 channels. Each channel is individually software selectable as a DI, DO, or PI.
		DO Switches	500 mA high- and low-side
Relays (Optional)	Provides two relays inside the flow computer enclosure. <b>Note:</b> This option is available <b>only</b> with Class 1 Div 2 approval.		

**I/O Specifications**

Analog Inputs	Type	Single-ended	
	Input Range	1 to 5 Vdc or 4 to 20 mA (software-selectable)	
	Over Range	1 to 5 Vdc	0.8 to 5.2 Vdc
		4 to 20 mA	3.2 to 20.8 mA
	Resolution	16 bits	
	Scan Rate	10 samples per second	
Input Impedance	1 to 5 Vdc Inputs	200 kΩ	
	4 to 20 mA Inputs	250 Ω	
	Fault Mode	User-entered default value or last good value	
	Software Filter	Software damping is available in FBxConnect configuration software	
	Input Filter	20 HZ @ -3 dB	
	Surge Suppression	30 Vdc	
	Reference Accuracy	+/- 0.05% of span <b>Note:</b> To achieve the stated accuracy when analog inputs are used in voltage mode, you must wire analog input reference(s) to the AGND terminals <i>separately</i> from the discrete and communication ground references.	

	Ambient Temperature Effect	+/- 0.05% of span per 10°C (18°F) from the calibration temperature		
	Long Term Stability	3 years		
	SNR	87 dB		
	Loop Power	Base I/O	External	
		Optional 8-point I/O	Internal	
		Optional 6-point I/O	Internal	
Analog Outputs	Type	Single-ended, externally sourced		
	Output Range	4 to 20 mA		
	Resolution	14 bits		
	Surge Suppression	30 Vdc		
	Reference Accuracy	± 0.1% of span		
		<b>Note:</b> To achieve the stated accuracy when analog outputs are used in voltage mode, you must wire analog output reference(s) to the AGND terminals <i>separately</i> from the discrete and communication ground references.		
	Ambient Temperature Effect	± 0.05% of span per 10 °C (18 °F) from the calibration temperature		
	Long Term Stability	3 years		
	Fault Mode	User-entered default value or last good value		
	Scan Rate	1 second		
	Surge Suppression	30 Vdc		
	Impedance	Current Mode	Configured to drive a load impedance of 0 to 900 Ω	
		Voltage Mode	100 kΩ	
Load Loop Resistance	0 to 900 Ω			
Max External Supply	30 Vdc			
Loop Power	Base I/O	External		
	Optional 8-point I/O	Internal		
	Optional 6-point I/O	Internal		
Discrete Inputs	Type	Dry contact or an open collector		
	Scan Rate	1 second		

Input Filter	10 Hz
Input Current	Software-selectable 66µA or 2mA
Voltage Rating	30 Vdc maximum
Frequency	10 Hz maximum
Input Type	Latched or unlatched
Loop Power	Internally sourced
Surge Suppression	30 Vdc
Fault Mode	User-entered default value or last good value

Discrete Outputs

Type	Open drain
Current	500 mA maximum
Operating Voltage Range	30 Vdc maximum
Frequency	50 Hz maximum
Output Type	Latched, momentary, toggle, TDO, or scaled pulse
Surge Suppression	30 Vdc
Fault Mode	User-entered default value or last good value

**Notes:**

Discrete outputs are rated to 500mA maximum. In a small number of applications, however, the load on the DO could have an effect on the uncertainty of the analog inputs and outputs. The typical increase in uncertainty is around 0.05% and **only** occurs when **all** the following are true:

- **Either** of the two *analog* channels in the base I/O (see page 6) is used as an AI (in voltage mode) or as an AO **and**
- **Either** of the two *discrete* channels in the base I/O is used as a DO **and**
- The total current load on these two DOs is **greater** than 300mA

Analog inputs in current mode and the I/O channels in the expansion I/O boards are **not** affected.

Pulse Inputs

Type	Dry contact or open collector	
Frequency	Low Range	0 to 300 Hz
	High Range	0 to 10.5 kHz
Input Filter	Low Frequency	1 ms software-selectable filter
	High Frequency	30 µs software-selectable filter
Input Current	Software-selectable 66 µA or 2 mA	
Voltage Rating	30 Vdc maximum	
Loop Power	Internally sourced	
Surge Suppression	30 Vdc	

Temperature Input (RTD/PRT)	Type	Pt100 2-wire, 3-wire, or 4-wire (software-selectable)		
	Measuring Range	-200 to +850 °C (-328 to 1562 °F)		
	Reference Accuracy	+/- 0.07 °C from -30 to 60°C (±0.126 °F from -22 to +140 °F) +/- 0.1 °C from -60 to 200°C (±0.18 °F from -76 to 392 °F)		
	Ambient Temperature Effect	-30 to 60°C	+/- 0.017 °C per 10 °C (+/- 0.03 °F per 18 °F) from the calibration temperature	
		-60 to 200°C	+/- 0.034 °C per 10 °C (+/- 0.06 °F per 18 °F) from the calibration temperature	
	Calculation Type	User selectable between:	Callendar-Van Dusen	
			IEC 751/DIN 43760 ( $\alpha$ 0.00385/°C)	
			IEC ( $\alpha$ 0.003920/°C)	
	Scan Rate	1 second		
	Voltage Input Impedance	Greater than 3 MΩ DC		
	Excitation Current	205 μA		
	Surge Suppression	36 Vdc		
	Common Mode Rejection	100 dB at DC		
Normal Mode Rejection	100 dB at 50/60 Hz			

### Relay Option

SPDT Relay	Internally mounted	Quantity	2
		(Relays each require a discrete output from the flow computer)	
	Input	24 Vdc	(24 Vdc is required to energize the relays or an expansion I/O option must be selected, which enables 24 Vdc loop power).
	Contact Rating	0 to 30 Vdc	Maximum Current 6A

**Note:** This option is available only with Class 1 Div 2 approval.

### Integral Sensors

The FB2200 is available with the following integral sensor options:

- MultiVariable Sensor – providing differential pressure and static pressure
- Static pressure sensor – providing static pressure only
- No integral sensor fitted – with interface to 4088B MVT transmitters or analog transmitters

**MultiVariable Sensor (optional)**

The standard Rosemount™ MultiVariable™ sensor has a stainless steel coplanar flange, a stainless steel (316L) diaphragm, and silicone fill fluid. Optional versions include:

- A Hastelloy® C-276 sensor diaphragm, a Hastelloy C-276 coplanar flange, with either NACE MRO175/ISO 15156 or MRO103 certification
- Stainless steel traditional flange, a stainless steel diaphragm, and silicon fill fluid.

Differential Pressure Input	DP Range 1	-25 to 25 inches H <sub>2</sub> O (-62.16 to 62.16 mbar)	
	Reference Accuracy	± 0.1% span;	For spans less than 5:1, ± (0.025+0.015 [USL/Span]) % span
	Stability	±0.2% USL for 1 year	
	Ambient Temperature Effect per 50°F (28°C)	from 1:1 to 30:1	± (0.2% USL + 0.25% span)
		from 30:1 to 50:1	± (0.24% USL + 0.15% span)
	Static Pressure Effects	Zero Error	± 0.25% USL per 1000 psi (69 bar)
		Span Error	± 0.4% of reading per 1000 psi (69 bar)
	Over Pressure Limit	SP Range G4/A4	2000 psi (137.89 bar)
	Burst Pressure Limit	All SP ranges	10,000 psi (689.47 bar)

**Notes:**

- 25-inch sensor is only available with static pressure SP Range 3, maximum pressure limited to 2000 psi.
- 25-inch sensor is only available with stainless steel sensor and coplanar flange.

	DP Range 2: Standard	0 to 250 inches H <sub>2</sub> O (623 mbar)	
	Reference Accuracy	± 0.1% span;	For spans less than 10:1, ± (0.01 [USL/Span]) % span
	Stability	± 0.1% USL for 1 year	
	Ambient Temperature Effect per 50°F (28°C)	from 1:1 to 30:1	± (0.15% USL)
		from 30:1 to 50:1	± (0.20% USL)
	Static Pressure Effects	Zero Error	± 0.1% USL per 1000 psi (69 bar) For Static Pressures above 2000 psi: ± [0.2 + 0.0001 * (Ps - 2000)] % per 1000 psi
		Span Error	± 0.2% of reading 1000 psi (69 bar)
	Over Pressure Limit	SP Range G6/A6	1600 psi (110.32 bar)

	SP Range G7/A7	3626 psi (250.00 bar)
	SP Range G4/A4	3626 psi (250.00 bar)
Burst Pressure Limit	All SP ranges	10,000 psi (689.47 bar)
<b>Note:</b> 0.1% accuracy is not available on traditional flange.		
DP Range 2: Enhanced	0 to 250 inches H <sub>2</sub> O (623 mbar)	
Reference Accuracy	± 0.075% span; For spans less than 10:1, ± (0.025 + 0.005 [USL/Span]) % span	
Stability	± 0.125% USL for 5 years; For ± 50 °F (28 °C) temperature changes, up to 1000 psi (68.9 bar) line pressure	
Ambient Temperature Effect per 50°F (28°C)	± (0.0175% USL + 0.1% span) from 1:1 to 5:1, ± (0.035% USL + 0.125% span) from 5:1 to 100:1	
Static Pressure Effects	Zero Error	± 0.05% USL per 1000 psi (69 bar) For Static Pressures above 2000 psi: ± [0.1 + 0.0001* (Ps - 2000)] % per 1000 psi
	Span Error	± 0.2% of reading per 1000 psi (69 bar)
Over Pressure Limit	SP Range G6/A6	1600 psi (110.32 bar)
	SP Range G7/A7	3626 psi (250.00 bar)
	SP Range G4/A4	3626 psi (250.00 bar)
Burst Pressure Limit	All SP ranges	10,000 psi (689.47 bar)
DP Range 2: Enhanced for Flow	0 to 250 inches H <sub>2</sub> O (623 mbar)	
Reference Accuracy	± 0.05% of reading; for readings less than 8:1, ± [0.05 + 0.0023(USL / Rdg)] % reading	
Stability	± 0.125% USL for 5 years; For ± 50 °F (28 °C) temperature changes, up to 1000 psi (68.9 bar) line pressure	
Ambient Temperature Effect per 50°F (28°C)	± 0.13% of reading from 1:1 to 5:1, ± [0.13 + 0.04 (USL / RDG)] % of reading from 5:1 to 100:1	

Static Pressure Effects	Zero Error	± 0.05% USL per 1000 psi (69 bar) For Static Pressures above 2000 psi: ± [0.1 + 0.0001 * (Ps - 2000)] % per 1000 psi
	Span Error	± 0.2% of reading per 1000 psi (69 bar)
Over Pressure Limit	SP Range G6/A6	1600 psi (110.32 bar)
	SP Range G7/A7	3626 psi (250.00 bar)
	SP Range G4/A4	3626 psi (250.00 bar)
Burst Pressure Limit	All SP ranges	10,000 psi (689.47 bar)
DP Range 2: Extended	0 to 250 inches H <sub>2</sub> O (623 mbar)	
Reference Accuracy	± 0.075% of span for spans 25 to 250 in H <sub>2</sub> O; For readings above span, ± 0.15% reading	
Stability	± 0.125% USL for 5 years; For ± 50 °F (28 °C) temperature changes, up to 1000 psi (68.9 bar) line pressure	
Ambient Temperature Effect per 50°F (28°C)	For units spanned 75 to 250 in H <sub>2</sub> O, ± (0.025% MSL + 0.125% span)	
	For pressures between span and 250 in H <sub>2</sub> O, ± (0.025% MSL + 0.125% reading)	
	For units spanned 25 to 75 in H <sub>2</sub> O, ± (0.09% MSL + 0.03% span)	
	For pressures between span and 250 in H <sub>2</sub> O, ± (0.09% MSL + 0.03% reading)	
	For pressure readings above 250 in H <sub>2</sub> O, ± 0.15% reading	
Static Pressure Effects	Zero Error	± 0.05% USL per 1000 psi (69 bar) For Static Pressures above 2000 psi: ± [0.1 + 0.0001 * (Ps - 2000)] % per 1000 psi
	Span Error	± 0.2% of reading per 1000 psi (69 bar)
Over Pressure Limit	SP Range G6/A6	1600 psi (110.32 bar)
	SP Range G7/A7	3626 psi (250.00 bar)
Burst Pressure Limit	All SP ranges	10,000 psi (689.47 bar)
DP Range 3: Standard	0 to 1000 Inches H <sub>2</sub> O (2.5 bar)	
Reference Accuracy	± 0.1% span; For spans less than 10:1, ± (0.01 [USL/Span]) % span	
Stability	± 0.1% USL for 1 year	

Ambient Temperature Effect per 50°F (28°C)	from 1:1 to 30:1	± (0.15% USL)
	from 30:1 to 50:1	± (0.20% USL)
Static Pressure Effects	Zero Error	± 0.1% USL per 1000 psi (69 bar) For Static Pressures above 2000 psi: ± [0.2 + 0.0001* (Ps - 2000)] % per 1000 psi
	Span Error	± 0.2% of reading per 1000 psi (69 bar)
Over Pressure Limit	SP Range G7/A7	3626 psi (250.00 bar)
	SP Range G4/A4	3626 psi (250.00 bar)
Burst Pressure Limit	All SP ranges	10,000 psi (689.47 bar)

**Notes:**

- 0.1% accuracy is **not** available on traditional flange.
- 1000" DP range with 0.1% accuracy **only** available with stainless steel sensor and coplanar flange.
- 1000" DP range is **not** available with 300 psi static pressure (SP Range 1).

DP Range 3: Enhanced	0 to 1000 inches H <sub>2</sub> O (2.5 bar)	
	Reference Accuracy	± 0.075% span; For spans less than 10:1, ± (0.025 +0.005 [USL/Span]) % span
Stability	± 0.125% USL for 5 years; For ± 50 °F (28 °C) temperature changes, up to 1000 psi (68,9 bar) line pressure	
Ambient Temperature Effect per 50°F (28°C)	± (0.0175% USL + 0.1% span) from 1:1 to 5:1, ± (0.035% USL + 0.125% span) from 5:1 to 100:1	
Static Pressure Effects	Zero Error	± 0.05% USL per 1000 psi (69 bar) For Static Pressures above 2000 psi: ± [0.1 + 0.0001* (Ps - 2000)] % / per 1000 psi
	Span Error	± 0.2% of reading per 1000 psi (69 bar)
Over Pressure Limit	SP Range G7/A7	3626 psi (250.00 bar)
	SP Range G4/A4	3626 psi (250.00 bar)
Burst Pressure Limit	All SP ranges	10,000 psi (689.47 bar)

**Note:** 1000" DP range is **not** available with 300 psi static pressure (SP Range 1).

DP Range 3: 0 to 1000 inches H<sub>2</sub>O (2.5 bar)  
Enhanced for Flow

Reference Accuracy	± 0.05% of reading; for readings less than 8:1, ± [0.05 + 0.0023(USL / Rdg)] % reading	
Stability	± 0.125% USL for 5 years; For ± 50 °F (28 °C) temperature changes, up to 1000 psi (68.9 bar) line pressure	
Ambient Temperature Effect per 50°F (28°C)	± 0.13% of reading from 1:1 to 5:1, ± [0.13 + 0.04 (USL / RDG)] % of reading from 5:1 to 100:1	
Static Pressure Effects	Zero Error	± 0.05% USL per 1000 psi (69 bar) For Static Pressures above 2000 psi: ± [0.1 + 0.0001 * (Ps - 2000)] % per 1000 psi
	Span Error	± 0.2% of reading per 1000 psi (69 bar)
Over Pressure Limit	SP Range G7/A7	3626 psi (250.00 bar)
	SP Range G4/A4	3626 psi (250.00 bar)
Burst Pressure Limit	All SP ranges	10,000 psi (689.47 bar)

**Note:** 1000" DP range is **not** available with 300 psi static pressure (SP Range 1).

DP Range 4: 0 to 2000 psi (137.89 bar)  
Standard

Reference Accuracy	± 0.1% of span; for spans less than 10:1, ± [0.01(USL / span)] % span	
Stability	±0.1% USL for 1 year	
Ambient Temperature Effect per 50°F (28°C)	± (0.225% of USL) from 1:1 to 50:1	
Static Pressure Effects	Zero Error	± 0.2% USL per 1000 psi (69 bar) For Static Pressures above 2000 psi: ± [0.4 + 0.0002* (Ps - 2000)] % per 1000 psi
	Span Error	± 0.2% of reading per 1000 psi (69 bar)
Standard	SP Range G4/A4	3626 psi (250.00 bar)
Burst Pressure Limit	All SP ranges	10,000 psi (689.47 bar)

**Static Pressure Input**

The following details are for the static pressure measurement of the MultiVariable sensor

SP Range 1	Gauge – G6	-14.7 to 300 psig (-1.01 to 2.07 barg)
	Absolute – A6	0 to 300 psia (-1.01 to 2.07 bara)
SP Range 2	Gauge – G7	-14.7 to 1500 psig (-1.01 to 103.4 barg)
	Absolute – A7	0 to 1500 psia (0 to 103.4 bara)
SP Range 3	Gauge – G4	-14.7 to 3600 psig (-1.01 to 250 barg)
	Absolute – A4	0 to 3600 psia (-1.01 to 250 bara)
Reference Accuracy	Standard	± 0.1% span; For spans less than 5:1, ± [0.017 (USL/Span)] % span
	Enhanced	± 0.075% span; For spans less than 5:1, ± [0.013(USL/Span)] % span
	Enhanced for Flow	± 0.05% span; For spans less than 5:1, ± [0.006( USL/Span)] % span
Stability	Standard	± 0.1% USL for 1 year
	Enhanced	± 0.125% USL for 5 years
	Enhanced for Flow	± 0.125% USL for 5 years
Ambient Temperature Effects per 28 °C (50 °F)	Standard	± (0.175% USL) from 1:1 to 10:1, ± (0.225% USL) from 10:1 to 25:1
	Enhanced	± (0.050% USL + 0.125% span) from 1:1 to 10:1, ± (0.060% USL + 0.175% span) from 10:1 to 25:1
	Enhanced for Flow	± (0.040% USL + 0.060% span) from 1:1 to 10:1, ± (0.050% USL + 0.150% span) from 10:1 to 40:1

**Static Pressure Sensor (optional)**

The following section applies to the “In-Line” Integral Static Pressure sensor, without differential pressure, which would typically be used with linear meters that provide a pulsed signal for flow.

These static pressure sensors are provided in stainless steel with a 1/2 “– 14 NPT Female process connection.

SP Range 1	Gauge – G1	-14.7 to 30 psig (-1.01 to 2.06 bar)
	Absolute – A1	0 to 30 pia <sub>a</sub> (0 to 2.06 bar)
SP Range 2	Gauge – G2	-14.7 to 150 psig (-1.01 to 10.34 bar)
	Absolute – A2	0 to 150 psia (0 to 10.34 bar)
SP Range 3	Gauge – G3	-14.7 to 800 psig (-1.01 to 55.15 bar)
	Absolute – A3	0 to 800 psia (0 to 55.15 bar)
SP Range 4	Gauge – G4	-14.7 to 4000 psig (-1.01 to 275.79 bar)
	Absolute – A4	0 to 4000 pia <sub>a</sub> (0 to 275.79 bar)
Reference Accuracy	Standard	± 0.1% span For spans less than 10:1, ± (0.01 [USL/Span]) % span

	Enhanced	± 0.075% span For spans less than 10:1, ± (0.025 + 0.005 [USL / Span]) % span
Stability	Standard	± 0.1% USL for 1 year
	Enhanced	± 0.125% USL for 5 years
Ambient Temperature Effects per 28 °C (50 °F)	Standard	± (0.175% USL) from 1:1 to 30:1 ± (0.225% USL) for 30:1 to 50:1
	Enhanced	± (0.050% USL + 0.125% span) from 1:1 to 30:1 ± (0.060% USL + 0.175% span) for 30:1 to 100:1
Over Pressure Limit	SP Range G1/A1	750 psi (51.71 bar)
	SP Range G2/A2	1500 psi (103.42 bar)
	SP Range G3/A3	1600 psi (110.32 bar)
	SP Range G4/A4	6000 psi (413.69 bar)
Burst-Pressure Limit	All SP ranges	11,000 psi (758.42 bar)

**Power**

External DC Power Supply	10.5 Vdc to 30 Vdc external supply (Max power at 10 watts)
Optional Rechargeable Lead Acid Battery	Internal mounted 10.5 Ah 12 Vdc battery The battery can power the unit for up to 45 days without any solar charging depending on the application, ambient temperature, solar regulator type, and can be charged by a suitable solar panel and solar charge regulator/controller panel. <b>Note:</b> This option is available <b>only</b> with Class 1 Div 2 approval
Solar Panel and Regulator Options	Optional 30W 12 Vdc solar panel with built-in SunKeeper™ SK-6 regulator. With the SunKeeper SK-6 solar regulator the battery can power the unit without charging up to 32 days the depending on the application. Optional internally mounted SunSaver SS-6-12 Vdc regulator. With the SunSaver SS-6-12 solar regulator the battery can power the unit without charging up to 45 days depending on the application. <b>Note:</b> These options are available <b>only</b> with Class 1 Div 2 approval
Loop Output Power	24 Vdc, 200mA maximum
SRAM Battery	Lithium coin cell type BR2335 or BR2330 Typical battery life 5-7 years with power; 10,000 hours without power

## Power Modes

To keep power consumption to a minimum, especially for remote sites, the FB2200 can run in two different power modes, low and standard. The FB2200 normally runs in low power mode for standard metering applications.

When running in low power mode, the radio power control function is used to switch to standard power mode and enable the serial ports. During communication periods, the unit uses the standard power mode and then automatically reverts to low power mode when the communication period is over.

### Notes:

- Serial connection to a remote 4088B MVT can run in low power mode.
- If PID control, math/logic blocks, or Ethernet communications are enabled, or a serial port is set to Modbus master or the additional 8 or 6 channels I/O is fitted and enabled, the unit will run in the standard power mode.

The local display and FBxWifi can be configured to switch off after a period of inactivity (configurable between 1 and 60 minutes) or be permanently left on.

When running in low power mode, if you need to use more than the default number of data points for logging, consult the [Emerson FB2200 Flow Computer Instruction Manual \(D301784X012\)](#) to determine the possible impact on power consumption.

The figures below are typical power values in mW measured at room temperature.

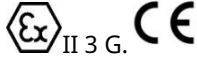




Low Power Mode	<b>Base unit</b> with integral multivariable DP and pressure sensor and temperature measurement, single DO available, single meter run	55 mW @ 12.3Vdc		
	<b>Base unit</b> with integral multivariable DP and pressure sensor and temperature measurement, 2 discrete & 2 analog channels available, single meter run	67 mW @ 12.3Vdc		
	<b>Base unit</b> with integral multivariable DP and pressure sensor and temperature measurement, communicating to remote 4088 - dual meter run (4088 Externally powered)	120 mW @ 12.3Vdc		
	<b>Additional Load Options</b>	FBxWifi and Display active	398 mW @ 12.3Vdc	
		DO active (1 Hz, 50:50 duty cycle, no load)	12 mW @ 12.3Vdc	
PI active (10KHz, 50:50 duty square wave)		12 mW @ 12.3Vdc		
Standard Power Mode	<b>Base unit</b> with integral multivariable DP and pressure sensor and temperature measurement, single meter run	240 mW @ 12Vdc	290 mW @ 24Vdc	
	<b>Base unit</b> with temperature measurement, (no integral sensor) communicating to remote 4088 (externally powered), single meter run	220 mW @ 12Vdc	268 mW @ 24Vdc	
	<b>Base unit</b> with integral multivariable DP and pressure sensor and temperature measurement, 2 discrete and 2 analog channels available, single meter run	260 mW @ 12Vdc	313 mW @ 24Vdc	
	<b>Base unit</b> with temperature measurement, integral static pressure sensor and pulsed input, single meter run	276 mW @ 12Vdc	330 mW @ 24Vdc	





<b>Base unit</b> with integral multivariable DP and pressure sensor and temperature measurement, communicating to remote 4088 - dual meter run (4088 externally powered)	250 mW @ 12Vdc	300 mW @ 24Vdc
<b>Additional Load Options</b>		
Display and Backlight active	159 mW @ 12Vdc	188 mW @ 24Vdc
FBxWifi	191 mW @ 12Vdc	199 mW @ 24Vdc
FBxWifi and Display active	233 mW @ 12Vdc	245 mW @ 24Vdc
DO active (1 Hz, 50:50 duty cycle, no load)	20 mW @ 12Vdc	23 mW @ 24Vdc
PI active (10KHz, 50:50 duty square wave)	14 mW @ 12Vdc	15 mW @ 24Vdc
Additional 8 channel I/O board fitted (isolated)	228 mW @ 12Vdc	280 mW @ 24Vdc
Additional 6 channel I/O board fitted (isolated)	68 mW @ 12Vdc	66 mW @ 24Vdc
Ethernet enabled 100 Mbit	430 mW @ 12Vdc	466 mW @ 24Vdc
Ethernet active 100 Mbit	640 mW @ 12Vdc	650 mW @ 24Vdc
Loop power supply	310 mW @ 12Vdc	393 mW @ 24Vdc

**Physical**

Aluminum Enclosure	Construction	Powder-coat aluminum, with lockable door
	Ingress Protection	IEC60529 IP66 & NEMA 4X
	Dimensions	356 mm H by 305 mm W by 152 mm D (14 in. H by 12 in. W by 6 in. D)
	Mounting	2 in. pipe, direct manifold, or panel mount
	Wiring	Size 12 to 28 American Wire Gauge (AWG) (0.3 to 2mm diameter)
	Wiring Access	2 conduit entry points, 3/4 in. NPT 1 blanked 5/8" (16mm) hole
	Weight	FB2200 with MVS coplanar flange sensor: 10.75 Kg (23.7 lb) FB2200 with static pressure sensor: 9.98 Kg (22 lb) FB2200 without sensor: 8.21 Kg (18.1 lb) Internal battery: 3.28 Kg (7.23 lb)
Fiberglass Enclosure	Construction	Compression-molded fiberglass, with lockable door
	Ingress Protection	IEC60529 IP66 & NEMA 4X
	Dimensions	305 mm H by 254 mm W by 152 mm D (12 in. H by 10 in. W by 6 in. D)

Mounting	2-inch pipe, direct manifold, or panel mount	
Wiring	Size 12 to 28 American Wire Gauge (AWG) (0.3 to 2mm diameter)	
Wiring Access	2 conduit entry points, 3/4 in. NPT 1 blanked 5/8" (16mm) hole	
Weight	FB2200 with MVS coplanar flange sensor: 6.94 Kg (15.3 lb)	
	FB2200 with static pressure sensor: 6.17 Kg (13.6 lb)	
	FB2200 without sensor: 4.4 Kg (9.7 lb)	
	Internal battery: 3.28 Kg (7.23 lb)	
HMI	20 characters per line; 4 lines in display.	
Security Switch (Optional)	Provides an alarm each time the enclosure door is opened.	
Local Display (Optional)	Type	Backlight LCD display
<b>Environmental</b>		
Operating Temperature	-40 °C to +80 °C (-40 °F to +176 °F) (see ambient temps in Approvals section) <b>Note:</b> Please check Approvals section for any restrictions. The display exhibits increased response time and decreased contrast at temperatures below -30 °C (-22 °F).	
Storage Temperature	-40 to 85 °C (-40 to 185 °F)	
Operating Humidity	5 to 95%, non-condensing	
Conformal Coating	All boards are conformal coated with a coating that complies with ANSI/ISA 71.04 Class G3 environments.	
Environmental Rating	Product conforms to ANSI/ISA 71.04 Class G3 environmental standards with all conduit openings sealed.	
Electro Magnetic Compatibility	The following EMC Emissions and Immunity are evaluated per EMC directive 2014/30/EU. Harmonized standards used: EN 61326-2-3-2013 Immunity EN 61326-1-2013 Emissions	
Immunity	EN 61000-4-2 (Electro Static Discharge) EN 61000-4-3 (Radiated Immunity) * EN 61000-4-4 (Fast Transients) EN 61000-4-5 (Surges) EN 61000-4-6 (Conducted RF) EN 61000-4-8 (Power Frequency Magnetic Field) EN 61000-4-17 (Voltage Ripple) EN 61000-4-29 (Voltage Dips and Interrupts) *Meets CE compliance 10V/m industrial requirements (deviations < 1% span for RTD and Pressure readings in addition to original specification)	
Radiated Emissions	EN 55022 Class A	
Vibration	2g over 10 to 150 Hz 1g over 150 to 200 Hz	

Approvals				
Product Markings for Hazardous Locations	UL	Class I, Div 2 Groups A, B, C, D Hazardous Locations, Temperature Code T4		
		<table border="0"> <tr> <td>Ambient Temperature</td> <td>                     Aluminum enclosure                      -40 °C to +80 °C (-40 °F to +176 °F) (no battery)                      -40 °C to +45 °C (-40 °F to +113 °F) (with rechargeable lead acid battery) <sup>Note 1</sup>                      -40 °C to +60 °C (-40 °F to +140 °F) (with optional relays)                       Fiberglass enclosure                      -35 °C to +80 °C (-31 °F to +176 °F) (no battery)                      -35 °C to +45 °C (-31 °F to +113 °F) (with rechargeable lead acid battery) <sup>Note 1</sup>                      -35 °C to +60 °C (-31 °F to +140 °F) (with optional relays)                 </td> </tr> </table>	Ambient Temperature	Aluminum enclosure -40 °C to +80 °C (-40 °F to +176 °F) (no battery) -40 °C to +45 °C (-40 °F to +113 °F) (with rechargeable lead acid battery) <sup>Note 1</sup> -40 °C to +60 °C (-40 °F to +140 °F) (with optional relays)  Fiberglass enclosure -35 °C to +80 °C (-31 °F to +176 °F) (no battery) -35 °C to +45 °C (-31 °F to +113 °F) (with rechargeable lead acid battery) <sup>Note 1</sup> -35 °C to +60 °C (-31 °F to +140 °F) (with optional relays)
		Ambient Temperature	Aluminum enclosure -40 °C to +80 °C (-40 °F to +176 °F) (no battery) -40 °C to +45 °C (-40 °F to +113 °F) (with rechargeable lead acid battery) <sup>Note 1</sup> -40 °C to +60 °C (-40 °F to +140 °F) (with optional relays)  Fiberglass enclosure -35 °C to +80 °C (-31 °F to +176 °F) (no battery) -35 °C to +45 °C (-31 °F to +113 °F) (with rechargeable lead acid battery) <sup>Note 1</sup> -35 °C to +60 °C (-31 °F to +140 °F) (with optional relays)	
		<p><b>Note 1:</b> Maximum ambient temperature for models with the internal SunSaver SS-6-12 Vdc solar regulator is 60 °C (140 °F). However, the internal lead acid battery is limited to +45 °C (+113 °F).</p>		
<table border="0"> <tr> <td>Evaluated per Approval Standards</td> <td>                     ANSI/ISA 12.12.01-2015                      CSA C22.2 No. 213-15, 1st Ed                      CSA C22.2 NO. 61010-1-12 3<sup>rd</sup> Ed.                      UL61010-1 3<sup>rd</sup> Ed.                 </td> </tr> </table>	Evaluated per Approval Standards	ANSI/ISA 12.12.01-2015 CSA C22.2 No. 213-15, 1st Ed CSA C22.2 NO. 61010-1-12 3 <sup>rd</sup> Ed. UL61010-1 3 <sup>rd</sup> Ed.		
Evaluated per Approval Standards	ANSI/ISA 12.12.01-2015 CSA C22.2 No. 213-15, 1st Ed CSA C22.2 NO. 61010-1-12 3 <sup>rd</sup> Ed. UL61010-1 3 <sup>rd</sup> Ed.			
Miscellaneous Approvals	Customs Union	ATEX Cert: DEMKO 16 ATEX 1579X IECEx Cert: IECEx UL 16.0069X Ex ec IIC T4 Gc UL22UKEX2395X		
		<table border="0"> <tr> <td>Ambient Temperature</td> <td>-25 to +55 °C (-13 to +131 °F)</td> </tr> </table>	Ambient Temperature	-25 to +55 °C (-13 to +131 °F)
		Ambient Temperature	-25 to +55 °C (-13 to +131 °F)	
				
		<table border="0"> <tr> <td></td> <td>EMC Directive 2016</td> </tr> </table>		EMC Directive 2016
	EMC Directive 2016			
<table border="0"> <tr> <td>Evaluated per Approval Standards</td> <td>                     Directive 2014/34/EU                      IEC 60079-0:2017                      IEC 60079-7:2017                      EN IEC 60079-0:2018                      EN IEC 60079-7:2015 + A1:2018                 </td> </tr> </table>	Evaluated per Approval Standards	Directive 2014/34/EU IEC 60079-0:2017 IEC 60079-7:2017 EN IEC 60079-0:2018 EN IEC 60079-7:2015 + A1:2018		
Evaluated per Approval Standards	Directive 2014/34/EU IEC 60079-0:2017 IEC 60079-7:2017 EN IEC 60079-0:2018 EN IEC 60079-7:2015 + A1:2018			
<p><b>Note:</b> ATEX and IECEx approval requires the use of an external DC power supply.</p>				
Miscellaneous Approvals	RoHS2	 TR CU 004/2011, TR CU 020/2011 Conforms to the requirements of the technical regulations of the Customs Union		
		RoHS (2) EU Directive 2014/65/EU		

RoHS	
NEPSI China	 National Supervision and Inspection Centre for Explosion Protection and Safety of Instrumentation Cert. No. GYJ17.1349X Ex nA IIC T4 Gc
CCOE India	 Chief Controller of Explosives Approval No. A/P/HQ/MH/104/5883 (P420903) Ex nA IIC T4 Gc
KOREA (KC)	EMC - Broadcasting and communication Equipment Cert. No. E23A-9B32-26C2-3662
NMi	 Report Numbers: NMi-1901499-02 & 1901499-01 API Chapter 21.1:2013 compliance for "Flow measurement using Electronics Metering Systems – Electronic Gas Measurement" and independent verification for natural gas properties and flow calculations

## Ordering information

Model/ Seg	Description	Approval	Selection
<b>Flow Computer</b>			
00	FB2200 Flow Computer		FB2200
<b>Hazardous Area Approvals</b>			
10	Class 1 Div2 cULus		A4
	IECEX/UKCA Ex ec		A5
	ATEX/UKCA Ex ec		A6
<b>Metrology Approvals</b>			
20	Not required		B0
<b>Housing Options</b>			
30	Powder-coated aluminum enclosure for use with options J0 & J1	A4, A5, A6	C5
	Fiberglass enclosure for use with options J0 & J1	A4, A5, A6	C7
<b>Power Options</b>			
40	DC supply (no internal battery, no solar regulator)	A4, A5, A6	D2
	Solar-ready: supplied with internal Power-Sonic® 12V 10.5 Ah battery, fuses, and 10 feet of cable (solar panel and solar regulator provided by others)	A4	D4
	Solar-ready: supplied with internal Power-Sonic® 12V 10.5 Ah battery, fuses, internal SunSaver™ 6 solar regulator, and 10 feet of cable (solar panel provided by others)	A4	D8
<b>Local Operator Interface Display</b>			
50	Not required	A4, A5, A6	E0
	Display included	A4, A5, A6	E1
<b>Measurement Type/Pressure Sensor</b>			
60	Not Required; external transmitters being used	A4, A5, A6	F0
	Integral Multivariable; DP & Static P	A4, A5, A6	F1
	Integral Static Pressure Only; Inline (no DP)	A4, A5, A6	F2
<b>Multivariable Sensor (includes Differential P, Static P, and Material/Flange Selections)</b>			
70	Multivariable Sensor (includes Differential P, Static P, and Material/Flange Selections)		
<b>Differential Pressure Range &amp; Accuracy</b>			
71	25 Inches H <sub>2</sub> O (62.3 mbar) DP, 0.1% Accuracy	A4, A5, A6	B221
	<b>Note:</b> 25" DP option is only available with static pressure options G4 or A4 and the maximum pressure is limited to 2000 psi.		
	250 Inches H <sub>2</sub> O (623 mbar) DP, 0.1% Accuracy	A4, A5, A6	B222

Model/ Seg	Description	Approval	Selection
	250 Inches H <sub>2</sub> O (623 mbar) DP, 0.075% Accuracy	A4, A5, A6	B122
	250 Inches H <sub>2</sub> O (623 mbar) DP, 0.05% Reading Accuracy, Enhanced for Flow <b>Note:</b> Enhanced For Flow sensor with the SP ranges G6, A6, G7, A7 (300/1500 psi) is only available with the Stainless Steel option 2E12 or Traditional Flange option 2F12. It is not available in the Hastelloy option 3E13. SP Range G4, A4 (3600 psi) is available in all material and flange types.		
	250 Inches H <sub>2</sub> O (623 mbar) Extended Range DP, 0.075% Accuracy <b>Note:</b> 250" Extended Range is only available with SP range G6, A6, G7, A7 and not available with SP range G4, A4.		
	1000 Inches H <sub>2</sub> O (2.5 bar) DP, 0.1% Accuracy <b>Note:</b> 1000" DP range is not available with 300 psi static pressure.	A4, A5, A6	B223
	1000 Inches H <sub>2</sub> O (2.5 bar) DP, 0.075% Accuracy <b>Note:</b> 1000" DP range is <b>not</b> available with 300 psi static pressure.	A4, A5, A6	B123
	1000 Inches H <sub>2</sub> O (2.5 bar) DP, 0.05% Reading Accuracy, Enhanced for Flow <b>Notes:</b> <ul style="list-style-type: none"> <li>• 1000" DP range is not available with 300 psi static pressure.</li> <li>• Enhanced For Flow sensor with the SP ranges G6, A6, G7, A7 (300/1500 psi) is only available with the Stainless Steel option 2E12 or Traditional Flange option 2F12. It is not available in the Hastelloy option 3E13. SP Range G4, A4 (3600 psi) is available in all material and flange types.</li> </ul>	A4, A5, A6	B323
	2000 psi (137.9 bar) DP, 0.1% Accuracy <b>Note:</b> 2000 psi DP range is only available with SP range G4 3626 psi and Hastelloy Diaphragm 3E13. Any other SP Range including A4 is not available.	A4, A5, A6	B225
	No Differential Pressure required, static pressure only accuracy 0.1% <b>Note:</b> Only available with option F2 and "Inline" sensor option 2K11	A4, A5, A6	B2
	No Differential Pressure required, static pressure only accuracy 0.075% <b>Note:</b>	A4, A5, A6	B1

Model/ Seg	Description	Approval	Selection
	Only available with option F2 and "Inline" sensor option 2K11.		
	No Differential Pressure required, no static pressure	A4, A5, A6	NN
	<b>Note:</b> Only available with option F0 in segment 60.		
<b>Static Pressure Range (for use with multivariable sensor B22n or B12n above)</b>			
72	MV 300 psi gauge (20.7 barg)	A4, A5, A6	G6
	<b>Notes:</b> <ul style="list-style-type: none"> <li>• 1000" DP range is not available with 300 psi static pressure.</li> <li>• Enhanced For Flow sensor with the SP ranges G6, A6, G7, A7 (300/1500 psi) is only available with the Stainless Steel option 2E12 or Traditional Flange option 2F12. It is not available in the Hastelloy option 3E13. SP Range G4, A4 (3600 psi) is available in all material and flange types.</li> </ul>		
	MV 300 psi absolute (20.7 bara)	A4, A5, A6	A6
	<b>Notes:</b> <ul style="list-style-type: none"> <li>• 1000" DP range is not available with 300 psi static pressure.</li> <li>• Enhanced For Flow sensor with the SP ranges G6, A6, G7, A7 (300/1500 psi) is only available with the Stainless Steel option 2E12 or Traditional Flange option 2F12. It is not available in the Hastelloy option 3E13. SP Range G4, A4 (3600 psi) is available in all material and flange types.</li> </ul>		
	MV 1500 psi gauge (103.4 barg)	A4, A5, A6	G7
	<b>Note:</b> Enhanced For Flow sensor with the SP ranges G6, A6, G7, A7 (300/1500 psi) is only available with the Stainless Steel option 2E12 or Traditional Flange option 2F12. It is not available in the Hastelloy option 3E13. SP Range G4, A4 (3600 psi) is available in all material and flange types.		
	MV 1500 psi absolute (103.4 bara)	A4, A5, A6	A7
	<b>Note:</b> Enhanced For Flow sensor with the SP ranges G6, A6, G7, A7 (300/1500 psi) is only available with the Stainless Steel option 2E12 or Traditional Flange option 2F12. It is not available in the Hastelloy option 3E13. SP Range G4, A4 (3600 psi) is available in all material and flange types.		
	MV 3600 psi gauge (250 barg)	A4, A5, A6	G4
	<b>Note:</b> When used with 25" DP option, maximum working pressure is 2000 psi/137.9 bar		
	MV 3600 psi absolute (250 bara)	A4, A5, A6	A4

Model/ Seg	Description	Approval	Selection
	<b>Note:</b> When used with 25" DP option, maximum working pressure is 2000 psi/137.9 bar		
	<b>Static Pressure Range (for use with Static P sensor only, B1 or B2 above)</b>		
	SP 30 psi gauge (2.06 barg)	A4, A5, A6	G1
	SP 30 psi absolute (2.06 bara)	A4, A5, A6	A1
	SP 150 psi gauge (10.34 barg)	A4, A5, A6	G2
	SP 150 psi absolute (10.34 bara)	A4, A5, A6	A2
	SP 800 psi gauge (55.15 barg)	A4, A5, A6	G3
	SP 800 psi absolute (55.15 bara)	A4, A5, A6	A3
	SP 4000 psi gauge (275.79 barg)	A4, A5, A6	G4
	SP 4000 psi absolute (275.79 bara)	A4, A5, A6	A4
	No differential pressure or static pressure sensor required	A4, A5, A6	NN
	<b>Note:</b> Only available with option F0 in segment 60.		
<b>Sensor Material and Flange Type</b>			
73	Stainless steel sensor and coplanar flange	A4, A5, A6	2E12
	Hastelloy® diaphragm and Hastelloy coplanar flange	A4, A5, A6	3E13
	<b>Note:</b> Not available with 25" DP sensor range and 300/1500 psi range with 0.05% reading accuracy enhanced for flow options.		
	Stainless steel sensor and traditional flange	A4, A5, A6	2F12
	<b>Note:</b> Not available with 25" DP sensor range and 300/1500 psi range with 0.05% reading accuracy enhanced for flow options.		
	Stainless steel inline connection 1/2" 14 NPT Female-(for use with option B1 or B2 above)	A4, A5, A6	2K11
	No differential pressure or static pressure sensor required	A4, A5, A6	NN
	<b>Note:</b> Available <b>only</b> with F0 in segment 60.		
<b>Sensor Material Certificates</b>			
74	Not required	A4, A5, A6	Q0
	3.1 B Traceability certs to EN 10205	A4, A5, A6	Q8
	NACE MRO 175/ISO 15156; requires Hastelloy diaphragm option	A4, A5, A6	Q15
	<b>Note:</b> Available <b>only</b> with 3E13.		
	NACE MRO 103; requires Hastelloy diaphragm option	A4, A5, A6	Q25

Model/ Seg	Description	Approval	Selection
<b>Note:</b> Available <b>only</b> with 3E13.			
<b>Base Inputs &amp; Outputs</b>			
80	PRT/RTD input (2-, 3-, or 4-wire) of 2 AI/AO & 2 DI/DO/PI	A4, A5, A6	G2
<b>Additional I/O</b>			
90	Not required	A4, A5, A6	H0
	Addition of 8-channel I/O (4 AI/AO, 4 DI/DO/PI), isolated from CPU	A4, A5, A6	H2
	Addition of 14-channel I/O (6 AI/AO, 8 DI/DO/PI), isolated from CPU	A4, A5, A6	H3
<b>FBxWifi™</b>			
100	Not required	A4, A5, A6	J0
	FBxWifi with internal antenna mounted inside enclosure	A4, A5, A6	J1
<b>Radio Ready</b>			
110	Not required	A4, A5, A6	K0
	Radio Mounting Bracket (no cables)	A4, A5, A6	K9
<b>Integral Relay</b>			
120	Not required	A4, A5, A6	L0
	Two internal relays mounted in enclosure (30 Vdc at 6.0A)	A4	L2
<b>Note:</b> L2 with power options D4 or D8 is only available when H2 or H3 is also selected, as the relays require 24 Vdc power.			
<b>Sensor Calibration Certificates</b>			
130	Not required	A4, A5, A6	M0
	Pressure/MVS (DP &/or Static P) Sensor & PRT/RTD input calibration certificate	A4, A5, A6	M1
	Pressure/MVS (DP &/or Static P) Sensor & PRT/RTD input Analog I/O calibration certificate	A4, A5, A6	M2
	Analog I/O & PRT/RTD input calibration certificate	A4, A5, A6	M3
<b>Note:</b> Available <b>only</b> with option F0 in segment 60.			
<b>Security Intrusion Switch</b>			
140	Not required	A4, A5, A6	N0
	Intrusion Switch on Door Entry	A4, A5, A6	N1
<b>Local Serial Port (mounted on bottom of chassis)</b>			
150	Not required	A4, A5, A6	P0

Model/ Seg	Description	Approval	Selection
	Serial Port socket: compatible with ROC/FloBoss cable; cable (part no. W20008X0012) sold separately.	A4, A5, A6	P1
	Serial Port socket: compatible with ABB cable (cable not included)	A4, A5, A6	P2
<b>Mounting Bracket</b>			
160	Panel mount kit	A4, A5, A6	R0
	2" Pipe-mounting kit (stainless steel) for aluminum housing C5/C6 only	A4, A5, A6	R5
	2" Pipe-mounting kit (stainless steel) for fiberglass housing C7/C8 only	A4, A5, A6	R6
<b>Meter Runs (Streams)</b>			
170	Single Stream	A4, A5, A6	S1
	Dual Stream	A4, A5, A6	S2
<b>Fluid Types &amp; Calculations</b>			
180	Natural Gas	A4, A5, A6	T1
	Natural Gas & Liquid Hydrocarbon	A4, A5, A6	T3
	<b>Note:</b> Current implementation of Liquid calculation supports Crude Oil and Light Hydrocarbons (NGL/LPG).		
<b>Control, Additional Programming, and Customization</b>			
190	Not required	A4, A5, A6	U0
	PID Control and Simple Logic Blocks	A4, A5, A6	U1
<b>Reserved</b>			
200	Not required		V0
<b>Ethernet Port</b>			
210	Not required	A4, A5, A6	W0
	Enabled	A4, A5, A6	W1

### Sensor Summary for FB1000 and FB2000 Series Flow Computers

The following table identifies the available possible sensor combinations for the FB1000 and FB2000 Series Flow Computers.

		Coplanar Flange			Coplanar Flange		Traditional Flange	
DP		SP	Stainless Steel		Hastelloy		Stainless Steel	
Range	Accuracy	Range	Gauge	Absolute	Gauge	Absolute	Gauge	Absolute
25"	0.1%	2000 psi	Available	Available	N/A	N/A	N/A	N/A
250"	0.1%	300 psi	Available	Available	Available	Available	N/A	N/A
		1500 psi	Available	Available	Available	Available	N/A	N/A
		3626 psi	Available	Available	Available	Available	N/A	N/A
250"	0.075%	300 psi	Available	Available	Available	Available	Available	Available
		1500 psi	Available	Available	Available	Available	Available	Available
		3626 psi	Available	Available	Available	Available	Available	Available
250" Enhanced for Flow	0.05% of Reading	300 psi	Available	Available	N/A	N/A	Available	Available
		1500 psi	Available	Available	N/A	N/A	Available	Available
		3626 psi	Available	Available	Available	Available	Available	Available
250" Extended	0.075%	300 psi	Available	Available	Available	Available	Available	Available
		1500 psi	Available	Available	Available	Available	Available	Available
1000"	0.1%	1500 psi	Available	Available	N/A	N/A	N/A	N/A
		3626 psi	Available	Available	N/A	N/A	N/A	N/A
1000"	0.075%	1500 psi	Available	Available	Available	Available	Available	Available
		3626 psi	Available	Available	Available	Available	Available	Available
		3626 psi	Available	Available	Available	Available	Available	Available
1000" Enhanced for Flow	0.05% of Reading	1500 psi	Available	Available	N/A	N/A	Available	Available
		3626 psi	Available	Available	Available	Available	Available	Available
2000 psi	0.1%	3626 psi	N/A	N/A	Available	N/A	N/A	N/A

Inline Stainless Steel			
Accuracy	SP Range	Gauge	Absolute
0.1%	30 psi	Available	Available
	150 psi	Available	Available
	800 psi	Available	Available
	4000 psi	Available	Available
0.075%	30 psi	Available	Available
	150 psi	Available	Available
	800 psi	Available	Available
	4000 psi	Available	Available

For customer service and technical support,  
visit [Emerson.com/Guardian](https://emerson.com/guardian).

**North America and Latin America:**

Emerson Energy and Transportation  
Solutions  
6005 Rogerdale Road  
Houston, TX 77072 U.S.A.  
T +1 888 889 9170  
[Emerson.com/SCADAforEnergy](https://emerson.com/SCADAforEnergy)

**United Kingdom:**

Emerson Process Management Limited  
Fosse House, 6 Smith Way  
Grove Park, Enderby  
Leicester LE19 1SX UK  
T +44 0 870 240 1978

**Europe:**

Emerson S.R.L  
Company number J12/88/2006  
Emerson 4 Street  
Cluj-Napoca, Cluj  
Romania  
T: +40 374 132 000

**Middle East/Africa:**

Emerson Energy and Transportation  
Solutions  
Emerson FZE  
P.O. Box 17033  
Jebel Ali Free Zone – South 2  
Dubai U.A.E.  
T +971 4 8118100 | F +971 4 8865465

**Asia-Pacific:**

Emerson Energy and Transportation  
Solutions  
1 Pandan Crescent  
Singapore 128461  
T +65 6777 8211 | F +65 6777 0947

© 2017-2025 Bristol Inc. All rights reserved.

This publication is for informational purposes only. While every effort has been made to ensure accuracy, this publication shall not be read to include any warranty or guarantee, express or implied, including as regards the products or services described or their use or applicability. Bristol Inc. (hereinafter “Energy and Transportation Solutions” or ETS) reserves the right to modify or improve the designs or specifications of its products at any time without notice. All sales are governed by ETS terms and conditions which are available upon request. ETS accepts no responsibility for proper selection, use or maintenance of any product, which remains solely with the purchaser and/or end-user. Emerson and the Emerson logo are trademarks and service marks of Emerson Electric Co. The DeltaV logo is a mark of one of the Emerson family of companies. All other marks are the property of their respective owners.