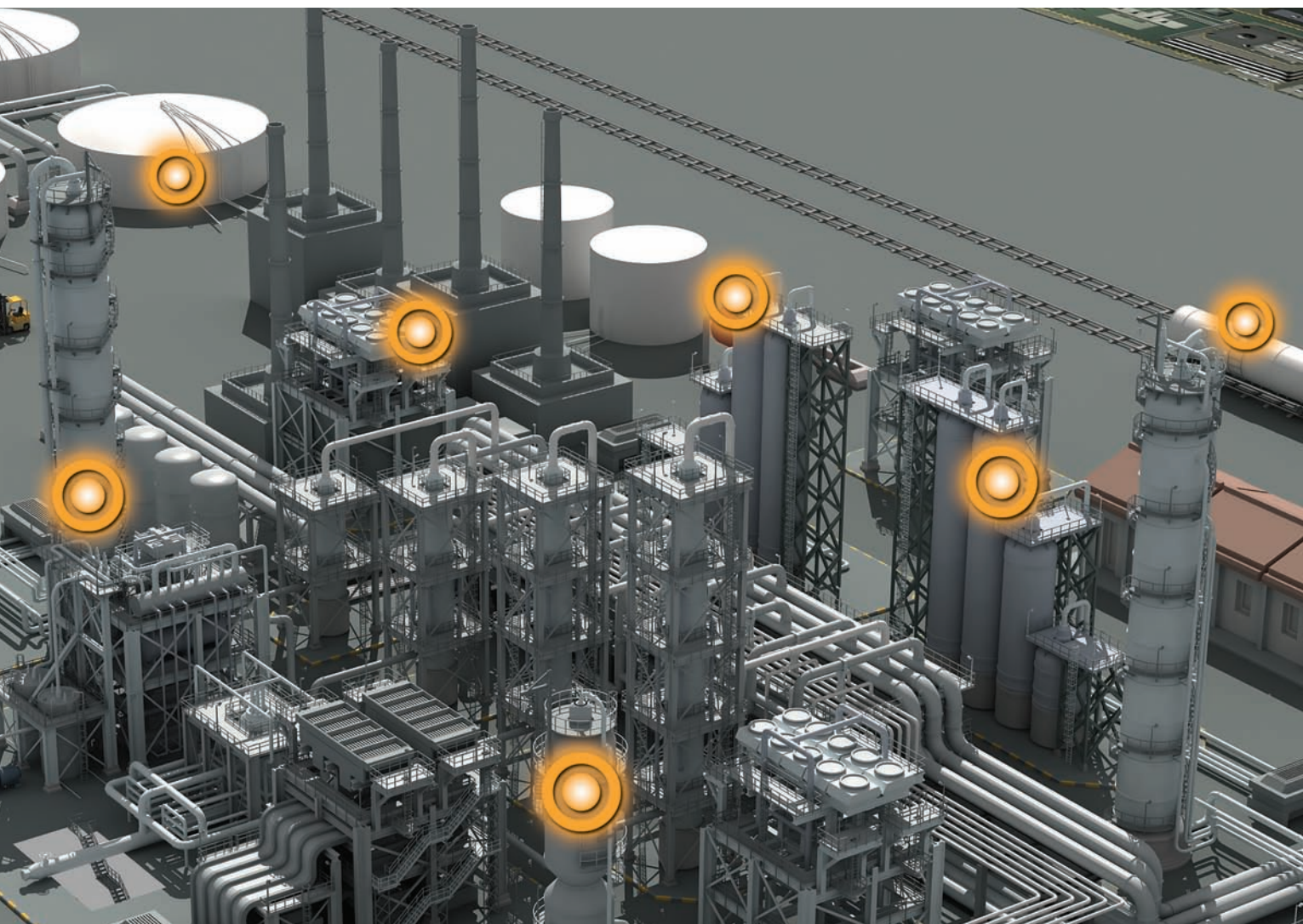


The Virtual Wireless Plant Tour

See what Smart Wireless can do for you.

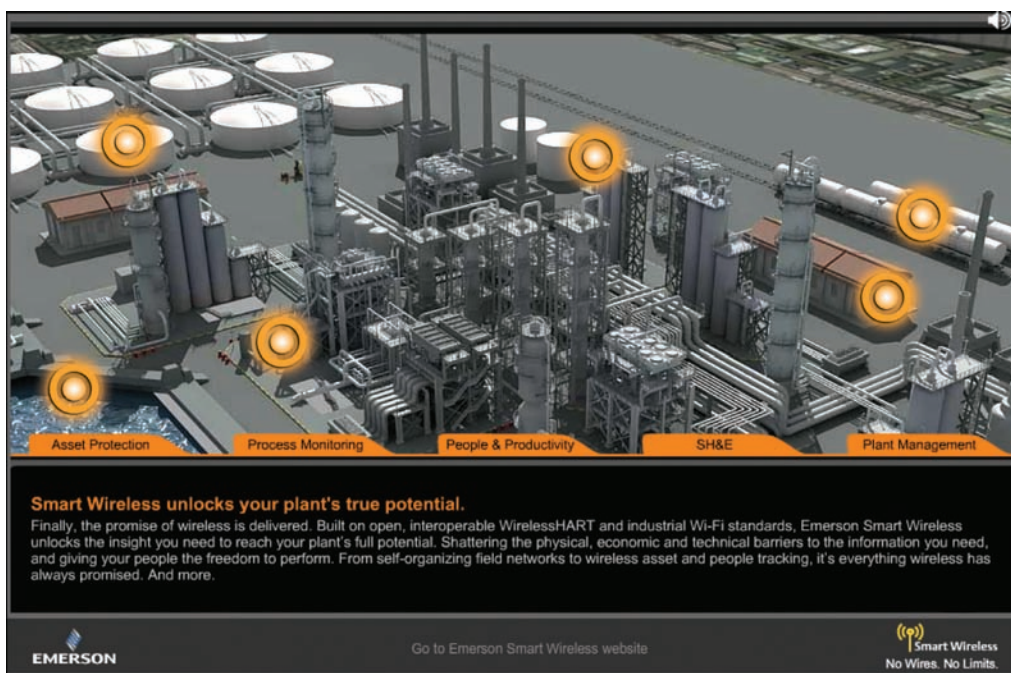


Experience the Virtual Wireless Plant



With Emerson's Smart Wireless solutions, the benefits of PlantWeb's predictive intelligence can be extended to areas that were previously out of physical or economic reach. With application categories ranging from Process and Asset Monitoring to People & Productivity, Safety/Health & Environmental, and Plant Management, there are no limits to the benefits Smart Wireless can deliver.

Remote locations, physical obstructions, and the high cost of engineering, installing, and integrating the necessary technologies are no longer the barriers they were. Emerson's Smart Wireless makes extending your "information reach" easy and affordable, enabling you to unleash your imagination and operation. To help you visualize what's possible, we've highlighted over 20 wireless applications in our online Virtual Wireless Plant.



The Virtual Wireless Plant is a web-based application that shows how wireless technologies can solve operational challenges today. This interactive model of a plant features over 20 customer-inspired applications, organized into five application categories: Asset Protection, Process Monitoring, People & Productivity, Safety/Health & Environmental (SH&E), and Plant Management.

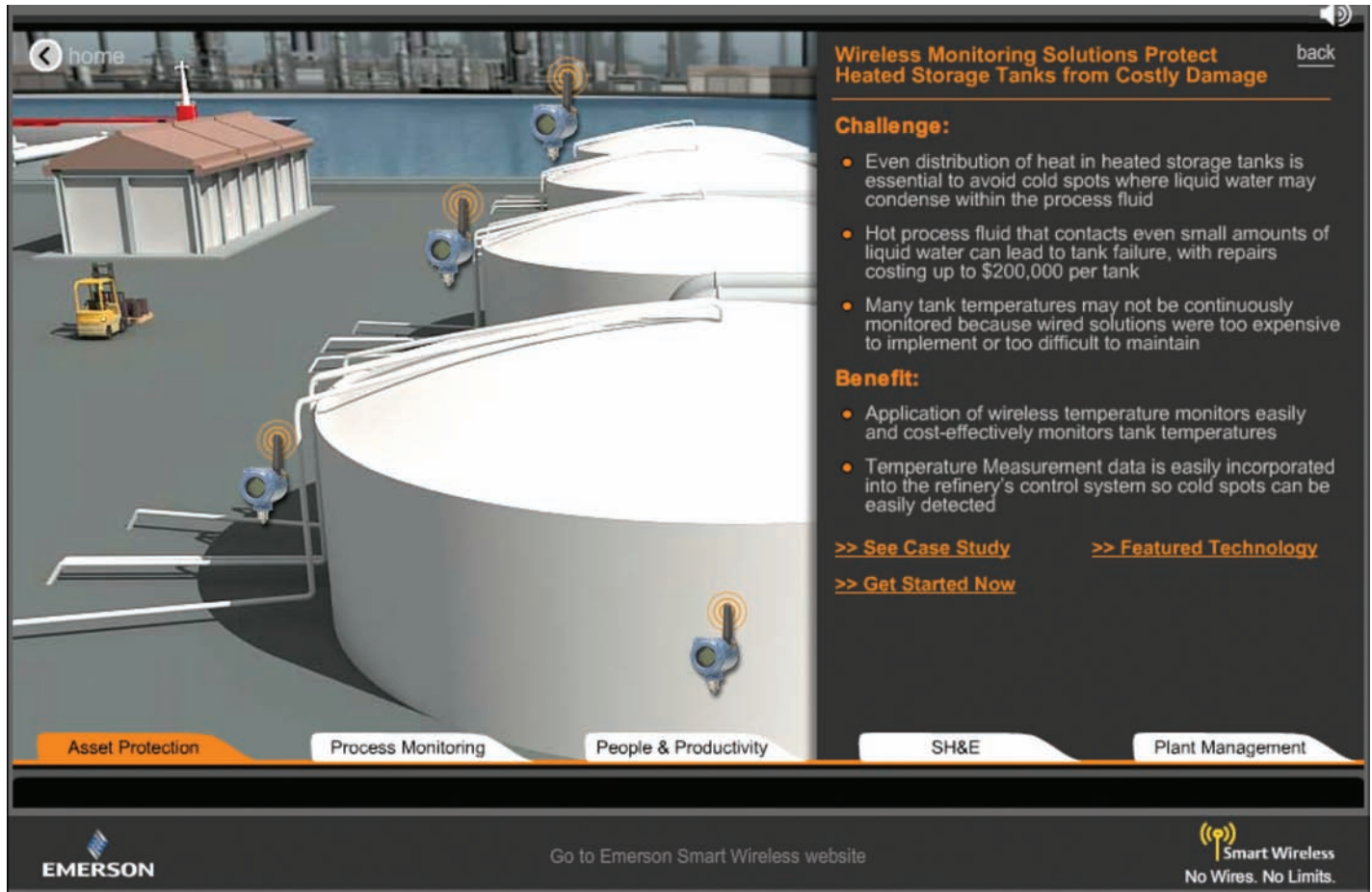


Simply click on an application category tab, then select a specific wireless hot-spot to "fly" to an illustration of that application.

See what wireless can do for you. Tour the Virtual Wireless Plant today.

Learn About Wireless Solutions for Real World Challenges

Manufacturers are constantly challenged to improve plant efficiency in the most cost-effective way possible, while continuing to maintain equipment reliability and safe operations for their people and the environment. The Virtual Wireless Plant makes it easy to see how wireless can improve operations.



[home](#) [back](#)

Wireless Monitoring Solutions Protect Heated Storage Tanks from Costly Damage

Challenge:

- Even distribution of heat in heated storage tanks is essential to avoid cold spots where liquid water may condense within the process fluid
- Hot process fluid that contacts even small amounts of liquid water can lead to tank failure, with repairs costing up to \$200,000 per tank
- Many tank temperatures may not be continuously monitored because wired solutions were too expensive to implement or too difficult to maintain

Benefit:

- Application of wireless temperature monitors easily and cost-effectively monitors tank temperatures
- Temperature Measurement data is easily incorporated into the refinery's control system so cold spots can be easily detected

[>> See Case Study](#) [>> Featured Technology](#)
[>> Get Started Now](#)

Asset Protection Process Monitoring People & Productivity SH&E Plant Management

EMERSON Go to Emerson Smart Wireless website **Smart Wireless**
No Wires. No Limits.

One of the many Smart Wireless applications available.

In each application example, text and voice-over describe the specific challenges users face and how Smart Wireless solutions can meet them with easy to understand benefits. In addition, links to other helpful resources include case studies, videos, product information, and how to get started. Achieving operational excellence is easy and cost-effective with Emerson's Smart Wireless solutions.

www.EmersonProcess.com/VirtualWirelessPlant

See Over 20 Game-Changing Wireless Solutions Described in Key App



Asset Protection

Adding Smart Wireless monitoring points to key assets such as pumps help to prevent unplanned shutdowns and extend the life of essential – and expensive – equipment.

Featured Applications

- Plugged filters
- Pump vibration
- Temperature excursions
- Fan vibration
- Temperature inconsistency



Pump vibration example

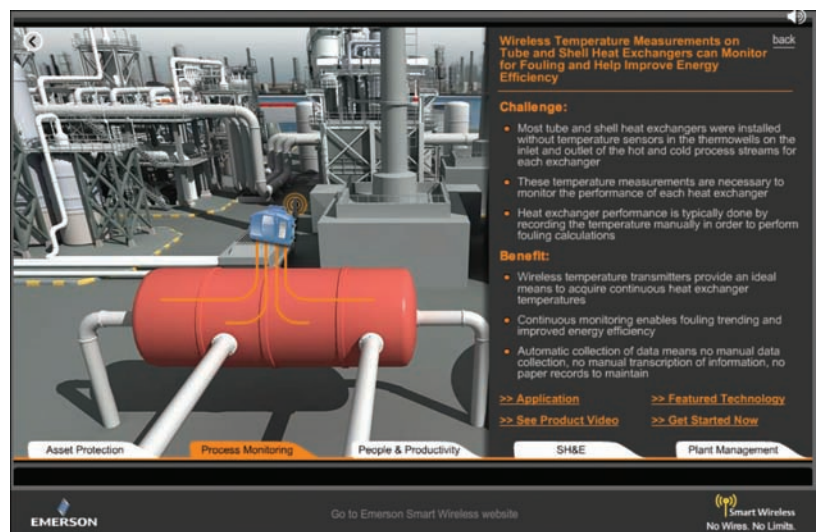


Process Monitoring

Improving the overall efficiency of you plant can reduce costs and improve throughput. See how Smart Wireless makes it easy and cost-effective to deploy predictive intelligence throughout your plant.

Featured Applications

- Column profile
- Piping & condensers
- Column top
- Steam header
- Heat exchanger
- Tank gauging
- Custody transfer



Heat exchanger example

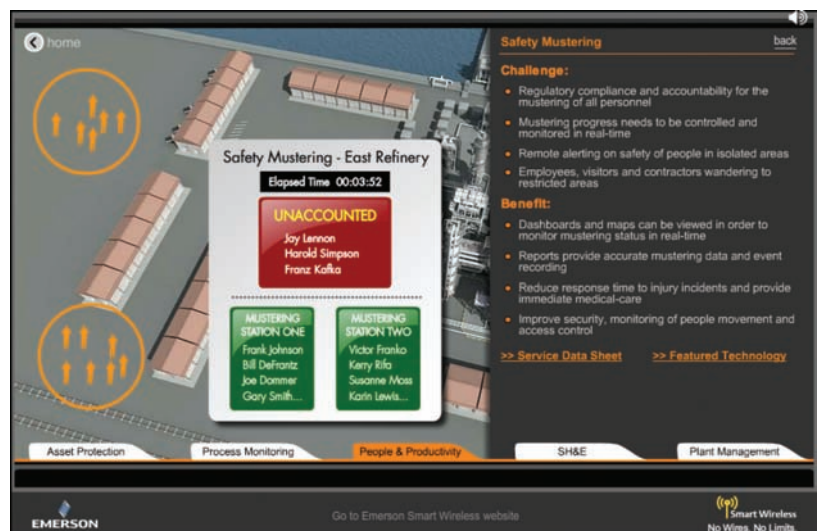


People & Productivity

Smart Wireless solutions not only empower your people to work more efficiently, it also helps you run a safer plant. See wireless applications such as safety mustering and location/commodity tracking.

Featured Applications

- Safety mustering
- Mobile worker
- Location & commodity tracking



Safety mustering example

Application Categories

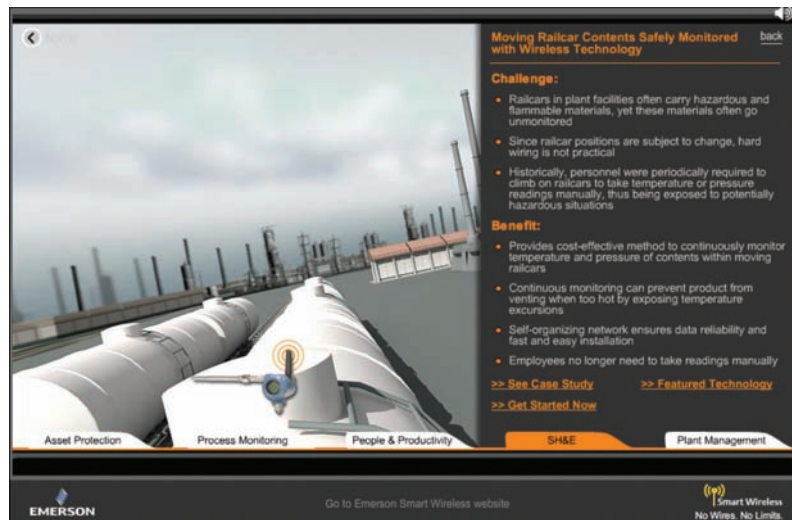


Safety/Health & Environmental (SH&E)

Early detection of hazardous conditions reduces risks to your personnel and your plant. With Emerson's Smart Wireless solutions, you can easily and cost-effectively extend the reach of predictive intelligence for SH&E compliance.

Featured Applications

- Water intake/outlet
- Emissions
- Eyewash/safety shower
- Moving railcars
- Tank venting



Moving railcar example



Plant Management

From control network bridging and field data backhaul, to video process monitoring and plant surveillance, Smart Wireless puts valuable information within reach to give you better insights into what's happening in your operation.

Featured Applications

- Field data backhaul
- Control network bridging
- Video monitoring



Field data backhaul example

Resources

Each application contains links to more information online...



Case Studies



Featured Technology



Videos



Wireless Starter Kit



[EMERSON.COM](#)
[CONTACT US](#)
[CAREERS](#)

[PLANTWEB](#)
[BRANDS](#)
[INDUSTRIES](#)
[PRODUCTS & SERVICES](#)
[NEWS / EVENTS](#)
[DOCUMENTATION](#)



The Virtual Wireless Plant

See what Smart Wireless can do for you... [Take the tour >>](#)

Emerson Smart Wireless

Emerson's Smart Wireless products and solutions extend PlantWeb predictive intelligence into areas that were previously out of physical or economic reach, opening the door for new possibilities in process improvement. Remote locations, physical obstructions, and the high cost of engineering and integrating new technologies are no longer the barriers they were.

Customer Successes

- BP Wytch Farm
- Boise
- Coogee Chemicals
- Wheeling-Pittsburgh Steel
- Technochem
- Usiminas
- Millford Power
- Statoll
- Hunt Refining
- [see more...](#)

Wireless Applications

- Spray Water
- Remote Pumps
- Moving Rail Cars
- Wellhead/Heat Exchangers
- Temperature Profiling/Tank Level
- Gross Production Headers
- Combustion Engine Emissions
- Pump Vibration
- Rotating Lime Kiln
- [see more...](#)

Start Anywhere

- Asset Protection
- Process Monitoring
- Safety, Health & Environmental
- People & Productivity
- Plant Management

Wireless Considerations

- Network Overview
- Wireless Standards
- Security
- Power Management
- Reliability
- Scalability

Services & Support

While our wireless architecture and applications are designed for ease of engineering, installation and use, we also offer a broad range of services to help you quickly get the most of wireless technology.

[Learn More >](#)

Wireless Products

- Measurement & Analytical Systems & Software
- Vibration Monitoring
- Discrete & Position Monitoring
- Smart Wireless Gateway
- Smart Wireless THUM Adapter
- Smart Wireless Field Starter Kit

Getting Started with Wireless

- Wireless Webinar Series
- PlantWeb University Courses
- Smart Wireless Field Starter Kit
- Best Practices Guide™

Articles & Resources

- Articles & Publications
- Press Releases
- White Papers
- Videos

"The flexibility of Emerson's self-organizing wireless technology makes it much easier to troubleshoot problems as well as evaluate new applications."

Jan Huijben
Technochem



Smart Wireless Field Starter Kit

The easy way to get started with wireless! order yours today >>



Wireless Now E-Magazine

Learn about proven successes and expanded capabilities >

[Visit an Emerson Process Management Division](#)
[NEWS](#)
[NEWSFEED](#)
[SUBSCRIBE](#)


[ENGLISH / UNITED STATES](#)
[CHANGE](#)

[PRIVACY POLICY](#)
[TERMS OF USE](#)
[SITE MAP](#)

© 2009 Emerson Electric Co. All rights reserved.

CONSIDER IT SOLVED.

For more information on Smart Wireless solutions, go to
www.EmersonProcess.com/SmartWireless

©2010 Emerson Process Management. All rights reserved.

The Emerson logo is a trademark and service mark of Emerson Electric Co. PlantWeb is a mark of one of the Emerson Process Management family of companies. All other marks are the property of their respective owners.

The contents of this publication are presented for information purposes only, and while effort has been made to ensure their accuracy, they are not to be construed as warranties or guarantees, express or implied, regarding the products or services described herein or their use or applicability. All sales are governed by our terms and conditions, which are available on request. We reserve the right to modify or improve the designs or specifications of our products at any time without notice.

Emerson Process Management
 12301 Research Blvd.
 Research Park Plaza, Building III
 Austin, TX 78759
www.EmersonProcess.com

