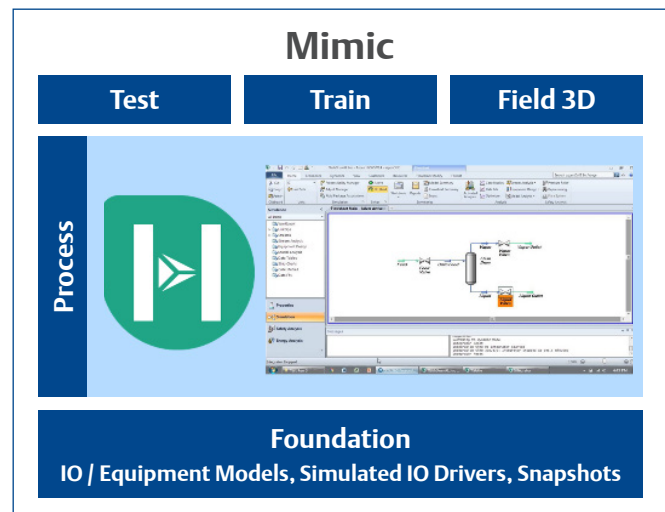


Aspen HYSYS® for Mimic™ Packages

- Best-in-class Operator Training Simulator and Multi-Purpose Dynamic Simulator with Aspen HYSYS
- Value-based licensing structure
- Training and integration capabilities of the Mimic Simulation framework



Introduction

Aspen HYSYS from AspenTech is the industry standard for engineering and design. Combined with Emerson's best-in-class Mimic framework for integration, training, testing, and Immersive Training Simulator (ITS) capabilities, Aspen HYSYS for Mimic packages provide a complete offering to support the industry's best Operator Training Simulator (OTS) and Multi-Purpose Dynamic Simulation (MPDS) solution.

Benefits

- **Best-in-class Operator Training Simulator and Multi-Purpose Dynamic Simulator with Aspen HYSYS** – Aspen HYSYS Dynamics provides a common platform that can be applied across the process lifecycle, from conceptual design and commissioning to operation and process optimizations. This allows users to meet tighter product specifications through improved understanding of process operability issues, ensure faster and safer start-ups, and avoid unplanned downtimes, resulting in maximum availability and productivity.

- **Value-based licensing structure** – Aspen HYSYS for Mimic packages are optimized for use with Mimic, providing users with the licensing they need to access to the Aspen HYSYS engineering and design suite and optimization within the simulation framework of Mimic for powerful integration and operator training capabilities.
- **Training and integration capabilities of Mimic simulation framework** – Mimic provides control system agnostic framework that allows Aspen HYSYS to integrate to the offline emulated control system(s) for a MPDS or OTS that uses production configuration and operator displays for a realistic Digital Twin. Additional functionality and tools within Mimic support flexible and comprehensive training and testing.

Product Description

The Aspen HYSYS for Mimic packages provide licensing for Aspen HYSYS Dynamics that can be dedicated to operations so that engineering and operations can work simultaneously. The three following packages are available:

- **Mimic-HYSYS Run-Time Package** – Provides dedicated Aspen HYSYS Dynamics Run-Time licensing for operations and the Aspen HYSYS Crude modeling package.
- **Mimic-HYSYS Upstream Run-Time Package** – Provides dedicated Aspen HYSYS Dynamics Run-Time licensing for operations and the Aspen HYSYS Crude modeling package with OLGA-Link.
- **Mimic-HYSYS Maintenance Package** – Provides Aspen HYSYS Dynamics licensing so that engineering can update and maintain the models of the MPDS and the Aspen HYSYS Process, Aspen HYSYS Crude, and Aspen HYSYS Upstream modeling packages.

Aspen HYSYS Engineering Suite

Aspen HYSYS is AspenTech's process modeling tool for steady-state simulation and dynamic simulation for the hydrocarbon and energy industries. It provides an intuitive and interactive process modeling environment that enables engineers to create steady-state and dynamic modes for operational improvement. The Aspen HYSYS Engineering Suite provides:

- Best-in-class physical properties through integration with Aspen properties.
- Optimization and estimation tools that enable parameter fitting, data reconciliation, and steady-state and dynamic process optimization.
- Equation-oriented architecture that allows fast and robust simulation of complex, highly integrated processes.
- Flexible Task Language to define transition schemes or to simulate equipment failures.
- Library of equipment models including rigorous reactive distillation with hydraulics and a full set of pressure relief models.

Components of Aspen HYSYS Engineering suite include:

- **Aspen HYSYS Dynamics** – convert steady-state models into dynamic process models, enabling design and verification of process control schemes, safety studies, relief valve sizing, failure analysis, and development of startup, shutdown, and operating mode changes.
- **Aspen HYSYS Dynamics Run-Time** – dedicated licensing for operations so that engineering and operations can work simultaneously.
- **Aspen HYSYS Crude** – characterizes the hydrocarbon fluid by determining the hypothetical components that make up the oil and predicts their thermophysical and transport petroleum properties. The generated crude assay information and components can be used in the Aspen HYSYS process simulation model.
- **Aspen HYSYS Upstream OLGA Link** – connection to OLGA simulator provides additional analyses for dynamic multiphase flow applications.

Mimic Simulation Framework with Aspen HYSYS Link

Mimic's simulation framework provides the communication backbone to support your dynamic simulation system. Mimic is built on the latest technology with a multi-threaded 64-bit real-time simulation engine, multi-user support, and is cloud ready to provide a robust and flexible framework for simulation. Mimic also has optional packages that support enhanced training and testing.

- Agnostic integration to one or multiple control systems maximizes the applications of Mimic as a simulation framework.
- Improve training and testing efficiency by running models and external systems faster or slower than real-time with Mimic's specialized SIO Drivers.
- Quickly restore a steady state, cold start, or abnormal condition with snapshots.
- Mimic Test Bench reduces repeated efforts through scripted testing protocols – automating loop-checks, interlock testing, and sequence quality checks.
- Mimic Train is Emerson's Operator Competency Suite, providing user management and access control systems, a training records database, state-based training exercises, built-in malfunction controls, and event and KPI tracking and reporting.

Guardian Support

Guardian Support™ for Aspen HYSYS is a service designed to optimize the reliability and performance of your simulation system.

- Improve your competitive advantage and bottom-line business results through critical service and support information.

- Make more-informed, proactive decisions about your simulation system by making day-to-day systems management tasks fast and efficient.

Ordering Information

Aspen HYSYS for Mimic packages must be associated with a Mimic System ID with Mimic Foundation. Contact your local Emerson sales office or representative for pricing specific to your system.

| Description | Model Number |
|--|--------------|
| Mimic-HYSYS Run-Time Package for Aspen Operator Training (Includes HYSYS Dynamics Run-Time, HYSYS Crude) | MM3-9102 |
| Mimic-HYSYS Upstream Run-Time Package for Aspen Operator Training (Includes HYSYS Dynamics Run-Time, HYSYS Crude, HYSYS Upstream OLGA-Link) | MM3-9103 |
| Mimic-HYSYS Maintenance Package for Aspen Operator Training (Includes HYSYS Dynamics, HYSYS Crude, HYSYS Upstream OLGA-Link) | MM3-9104 |
| Mimic HYSYS Link | MM3-3104 |

©2022, Emerson. All rights reserved.

The Emerson logo is a trademark and service mark of Emerson Electric Co. All other marks are the property of their respective owners.

The contents of this publication are presented for informational purposes only, and while diligent efforts were made to ensure their accuracy, they are not to be construed as warranties or guarantees, express or implied, regarding the products or services described herein or their use or applicability. All sales are governed by our terms and conditions, which are available on request. We reserve the right to modify or improve the designs or specifications of our products at any time without notice.

Contact Us

🌐 www.emerson.com/contactus

