

Data sheet

Sheet No.: GPI 3.01 Rev. C

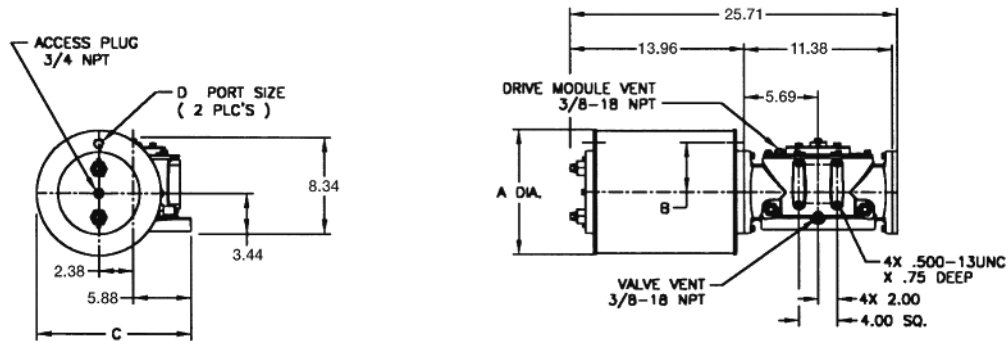
Date: March 2017

G/GC-Series

Dimensions – (Pneumatic) In. G/GC-Series

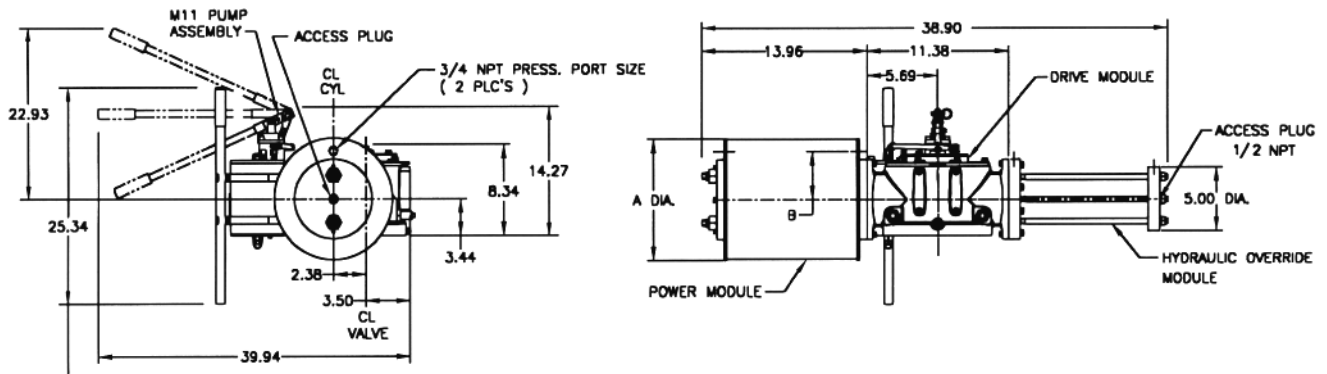
Double-Acting Actuators

G010XX/GC010XX (CW Model Shown)



Actuator Model	A	B	C	D
G01008/GC01008	8.75	3.19	10.25	3/4 NPT
G01009/GC01009	9.88	3.78	10.82	3/4 NPT
G01010/GC01010	11.00	4.38	11.38	3/4 NPT
G01012/GC01012	13.00	5.00	12.38	3/4 NPT
G01014/GC01014	14.25	5.50	13.00	3/4 NPT

G010XX-M11/GC010XX-M11 (CW Model Shown)



NOTE: PUMP HANDLE SHOWN STORED, MAY BE MOVED UP OR DOWN.

Actuator Model	A	B
G01008-M11/GC01008-M11	8.75	3.19
G01009-M11/GC01009-M11	9.88	3.78
G01010-M11/GC01010-M11	11.00	4.38
G01012-M11/GC01012-M11	13.00	5.00
G01014-M11/GC01014-M11	14.25	5.50

Note: Not Certified dimensional drawings. Such drawings available on request.
Contact factory with correct model designation and serial number.
All dimensions are expressed in inches.

BETTIS™

EMERSON™

Copyright © Emerson. The information in this document is subject to change without notice. Updated data sheets can be obtained from our website www.emerson.com/bettis or from your Emerson Automation Solutions - Actuation Technologies Center.
America's: +1 281 477 4100 Europe: +36 22 53 0950 Asia/Pacific: +65 67 77 8211

Data sheet

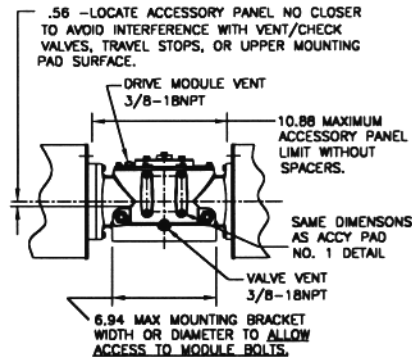
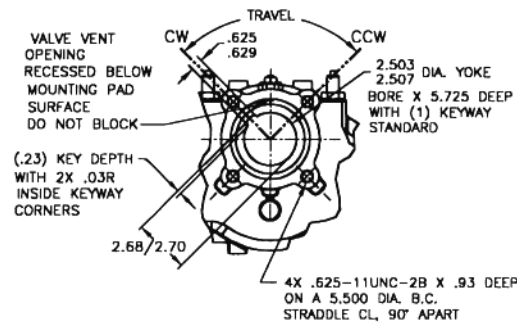
Sheet No.: GPI 3.02 Rev. C

Date: March 2017

G/GC-Series

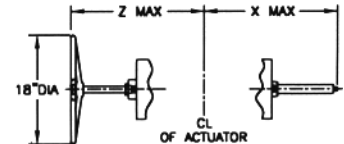
Dimensions – (Pneumatic) In. G/GC-Series

**Double-Acting Actuators
Mounting Pad Detail**



ACCESSORY PAD NO. 2 DETAIL

**Adjustable End Stops
& Jackscrews**



	X (-ETS) Extended Travel Stop	X End Stop	Z (M3/M3HW) Jackscrew
Power Module	27.32	20.41	29.55
Blind End Cap Module	15.83	8.92	17.43
Spring Module	47.65	40.31	46.63
Hydraulic Override Module	27.71	21.59	N/A

Note: Not Certified dimensional drawings. Such drawings available on request.
Contact factory with correct model designation and serial number.
All dimensions are expressed in inches.

BETTIS™

EMERSON™

Data sheet

Sheet No.: GPI 3.03 Rev. C

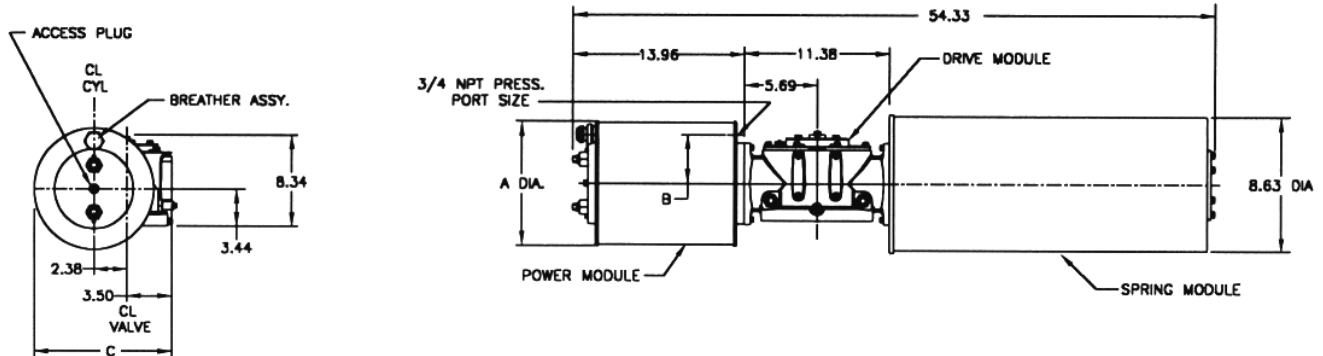
Date: March 2017

G/GC-Series

Dimensions – (Pneumatic) In.

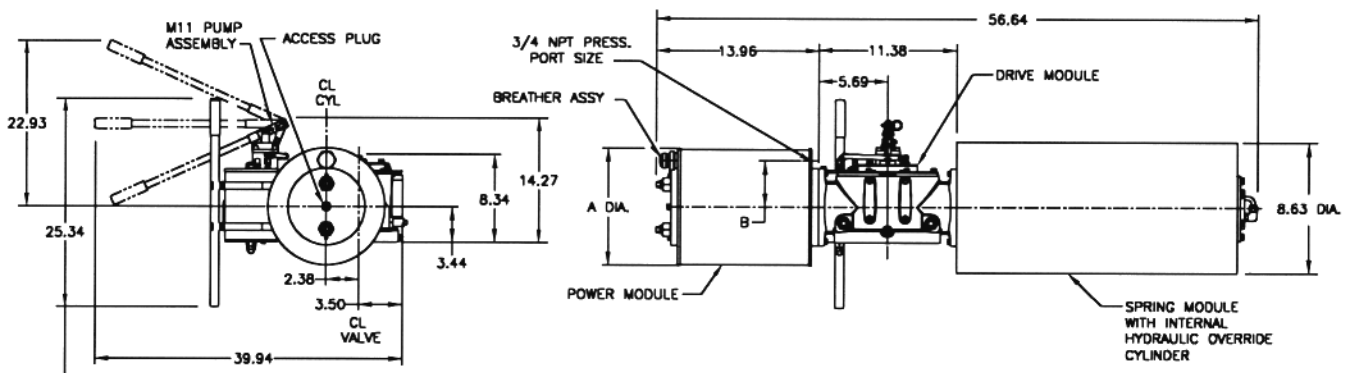
G/GC-Series

Spring-Return Actuators
G010XX-SR/GC010XX-SR (CW Model Shown)



Actuator Model	A	B	C
G01008-SR/GC01008-SR	8.75	3.19	10.25
G01009-SR/GC01009-SR	9.88	3.78	10.82
G01010-SR/GC01010-SR	11.00	4.38	11.38
G01012-SR/GC01012-SR	13.00	5.00	12.38
G01014-SR/GC01014-SR	14.25	5.50	13.00

G010XX-SR-M11/GC010XX-SR-M11 (CW Model Shown)



NOTE: PUMP HANDLE SHOWN STORED, MAY BE MOVED UP OR DOWN.

Actuator Model	A	B
G01008-SR-M11/GC01008-SR-M11	8.75	3.25
G01009-SR-M11/GC01009-SR-M11	9.88	3.78
G01010-SR-M11/GC01010-SR-M11	11.00	4.38
G01012-SR-M11/GC01012-SR-M11	13.00	5.00
G01014-SR-M11/GC01014-SR-M11	14.25	5.50

Note: Not Certified dimensional drawings. Such drawings available on request.
Contact factory with correct model designation and serial number.
All dimensions are expressed in inches.

BETTIS™


EMERSON™

Data sheet

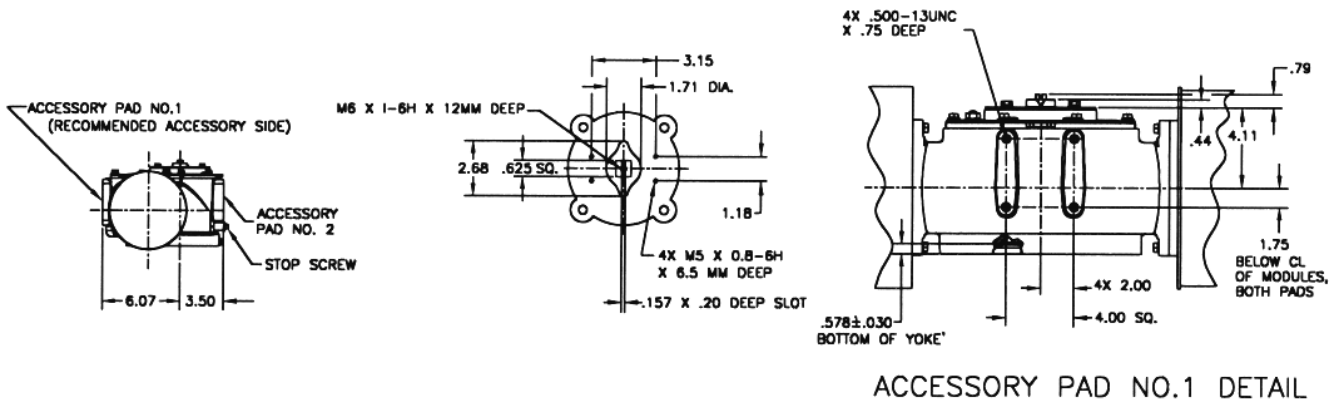
Sheet No.: GPI 3.04 Rev. C

Date: March 2017

G/GC-Series

Dimensions – (Pneumatic) In. G/GC-Series

Spring-Return Actuators
Accessory Details



Note: Not Certified dimensional drawings. Such drawings available on request.
Contact factory with correct model designation and serial number.
All dimensions are expressed in inches.

BETTISTM

Copyright © Emerson. The information in this document is subject to change without notice. Updated data sheets can be obtained from our website www.emerson.com/bettis or from your Emerson Automation Solutions - Actuation Technologies Center:
America's: +1 281 477 4100 Europe: +36 22 53 0950 Asia/Pacific: +65 67 77 8211



EMERSONTM

Data sheet

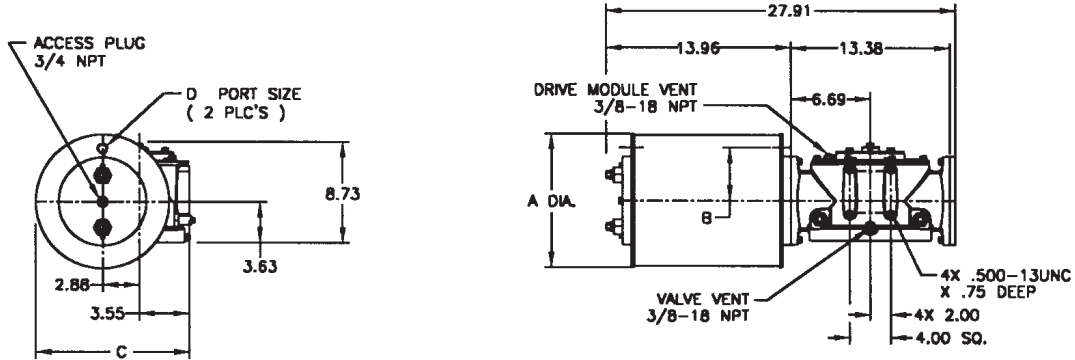
Sheet No.: GPI 3.05 Rev. C

Date: March 2017

G/GC-Series

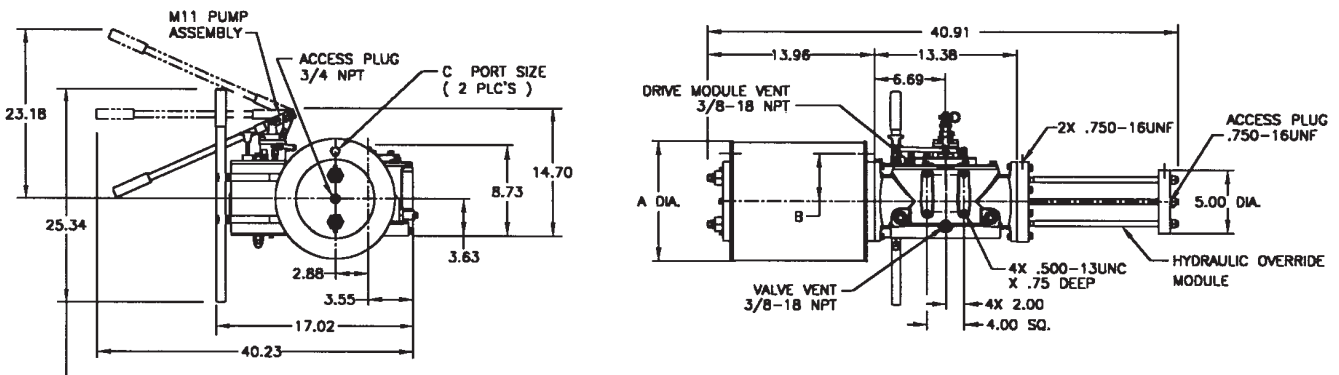
Dimensions – (Pneumatic) In. G/GC-Series

Double-Acting Actuators
G20XX/GC20XX (CW Model Shown)



Actuator Model	A	B	C	D
G2009/GC2009	9.88	3.38	11.38	3/4 NPT
G2010/GC2010	11.00	4.38	11.97	3/4 NPT
G2012/GC2012	13.00	5.00	12.93	3/4 NPT
G2014/GC2014	14.25	5.50	13.56	3/4 NPT
G2016/GC2016	16.25	6.25	14.56	3/4 NPT

G20XX-M11/GC20XX-M11 (CW Model Shown)



NOTE: PUMP HANDLE SHOWN STORED, MAY BE MOVED UP OR DOWN.

Actuator Model	A	B	C
G2009-M11/GC2009-M11	9.88	3.38	3/4 NPT
G2010-M11/GC2010-M11	11.00	4.38	3/4 NPT
G2012-M11/GC2012-M11	13.00	5.00	3/4 NPT
G2014-M11/GC2014-M11	14.25	5.50	3/4 NPT
G2016-M11/GC2016-M11	16.25	6.25	3/4 NPT

Note: Not Certified dimensional drawings. Such drawings available on request. Contact factory with correct model designation and serial number. All dimensions are expressed in inches.

BETTIS™

EMERSON™

Data sheet

Sheet No.: GPI 3.06 Rev. C

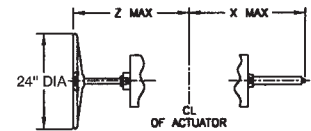
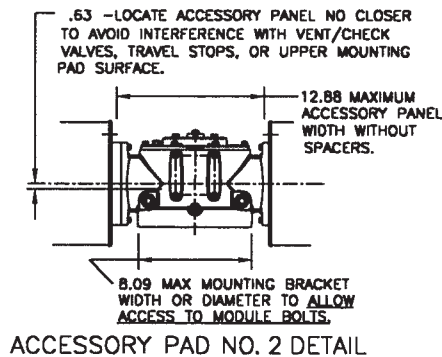
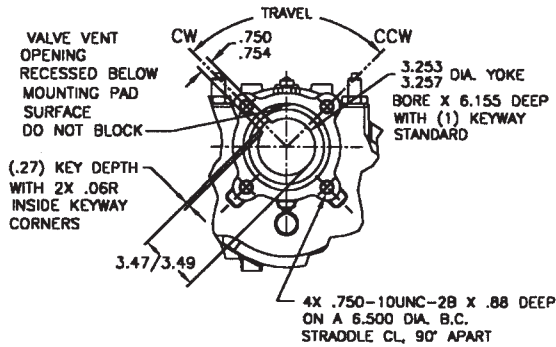
Date: March 2017

G/GC-Series

Dimensions – (Pneumatic) In. G/GC-Series

Double-Acting Actuators
Valve/Accessory Mounting Details

Adjustable End Stops
& Jackscrews



	X (-ETS) Extended Travel Stop	X End Stop	Z (M3/M3HW) Jackscrew
Power Module	28.32	21.41	35.07
Blind End Cap Module	16.83	9.92	22.55
Spring Module	48.22	41.31	50.35

Note: Not Certified dimensional drawings. Such drawings available on request.
Contact factory with correct model designation and serial number.
All dimensions are expressed in inches.

BETTIS™


EMERSON™

Copyright © Emerson. The information in this document is subject to change without notice. Updated data sheets can be obtained from our website www.emerson.com/bettis or from your Emerson Automation Solutions - Actuation Technologies Center:
Americas: +1 281 477 4100 Europe: +36 22 53 0950 Asia/Pacific: +65 67 77 8211

Data sheet

Sheet No.: GPI 3.07 Rev. C

Date: March 2017

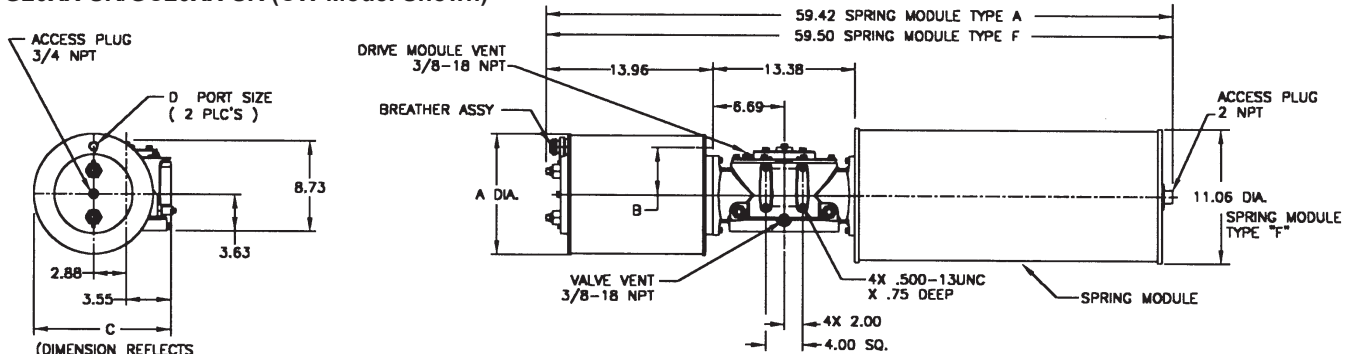
G/GC-Series

Dimensions – (Pneumatic) In.

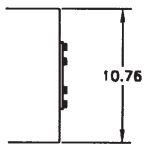
G/GC-Series

Spring-Return Actuators

G20XX-SR/GC20XX-SR (CW Model Shown)



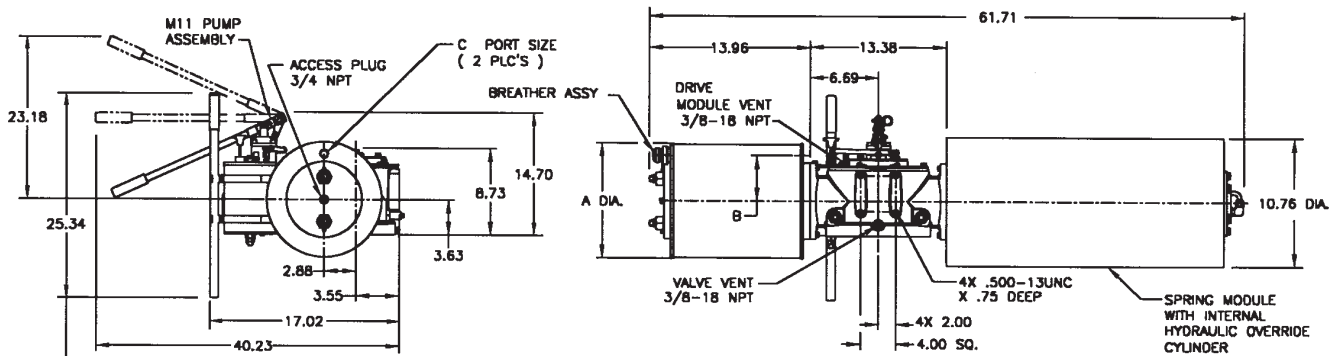
(DIMENSION REFLECTS LARGEST OF EITHER CYLINDER)



SPRING MODULE TYPE "A" CONFIGURATION FOR HYDRAULIC OVERRIDE ADAPTABILITY

Actuator Model	A	B	C	D
G2009-SR/GC2009-SR	9.88	3.38	11.38	3/4 NPT
G2010-SR/GC2010-SR	11.00	4.38	11.97	3/4 NPT
G2012-SR/GC2012-SR	13.00	5.00	12.93	3/4 NPT
G2014-SR/GC2014-SR	14.25	5.50	13.56	3/4 NPT
G2016-SR/GC2016-SR	16.25	6.25	14.56	3/4 NPT

G20XX-SR-M11/GC20XX-SR-M11 (CW Model Shown)



NOTE: PUMP HANDLE SHOWN STORED, MAY BE MOVED UP OR DOWN.

Actuator Model	A	B	C
G2009-SR-M11/GC2009-SR-M11	9.88	3.38	3/4 NPT
G2010-SR-M11/GC2010-SR-M11	11.00	4.38	3/4 NPT
G2012-SR-M11/GC2012-SR-M11	13.00	5.00	3/4 NPT
G2014-SR-M11/GC2014-SR-M11	14.25	5.50	3/4 NPT
G2016-SR-M11/GC2016-SR-M11	16.25	6.25	3/4 NPT

Note: Not Certified dimensional drawings. Such drawings available on request. Contact factory with correct model designation and serial number. All dimensions are expressed in inches.

BETTIS™

EMERSON™

Data sheet

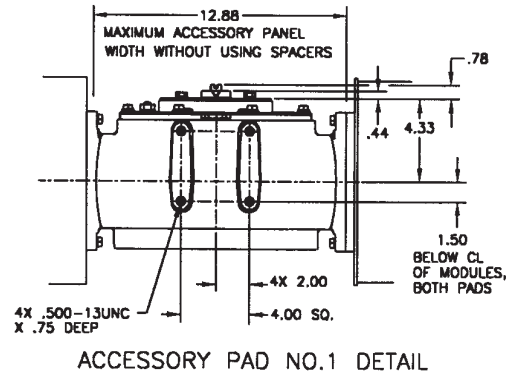
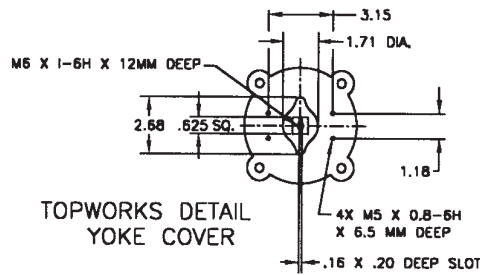
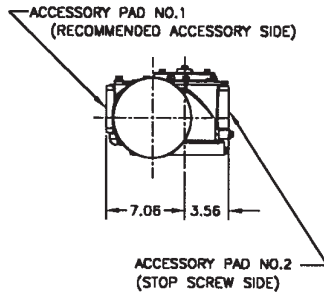
Sheet No.: GPI 3.08 Rev. C

Date: March 2017

G/GC-Series

Dimensions – (Pneumatic) In. G/GC-Series

Spring-Return Actuators
Accessory Details



Note: Not Certified dimensional drawings. Such drawings available on request.
Contact factory with correct model designation and serial number.
All dimensions are expressed in inches.

BETTIS™

Copyright © Emerson. The information in this document is subject to change without notice. Updated data sheets can be obtained from our website www.emerson.com/bettis or from your Emerson Automation Solutions - Actuation Technologies Center:
America's: +1 281 477 4100 Europe: +36 22 53 0950 Asia/Pacific: +65 67 77 8211



EMERSON™

Data sheet

Sheet No.: GPI 3.09 Rev. C

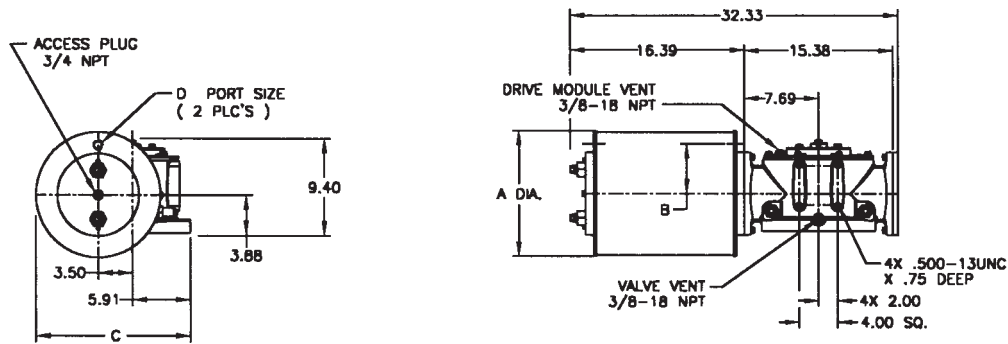
Date: March 2017

G/GC-Series

Dimensions – (Pneumatic) In. G/GC-Series

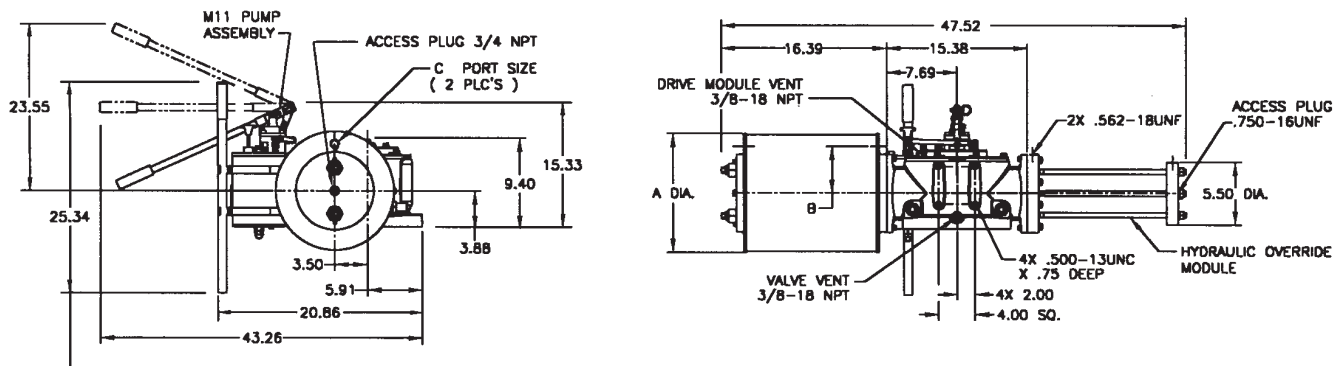
Double-Acting Actuators

G30XX/GC30XX (CW Model Shown)



Actuator Model	A	B	C	D
G3010/GC3010	11.00	4.38	14.91	3/4 NPT
G3012/GC3012	13.00	5.19	15.91	3/4 NPT
G3014/GC3014	14.25	5.68	16.53	3/4 NPT
G3016/GC3016	16.25	6.25	17.53	3/4 NPT
G3020/GC3020	20.25	8.00	19.53	3/4 NPT

G30XX-M11/GC30XX-M11 (CW Model Shown)



NOTE: PUMP HANDLE SHOWN STORED, MAY BE MOVED UP OR DOWN.

Actuator Model	A	B	C
G3010-M11/GC3010-M11	11.00	4.38	3/4 NPT
G3012-M11/GC3012-M11	13.00	5.19	3/4 NPT
G3014-M11/GC3014-M11	14.25	5.68	3/4 NPT
G3016-M11/GC3016-M11	16.25	6.25	3/4 NPT
G3020-M11/GC3020-M11	20.25	8.00	3/4 NPT

Note: Not Certified dimensional drawings. Such drawings available on request. Contact factory with correct model designation and serial number. All dimensions are expressed in inches.

BETTIS

EMERSON

Data sheet

Sheet No.: GPI 3.10 Rev. C

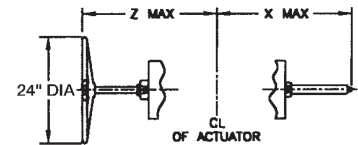
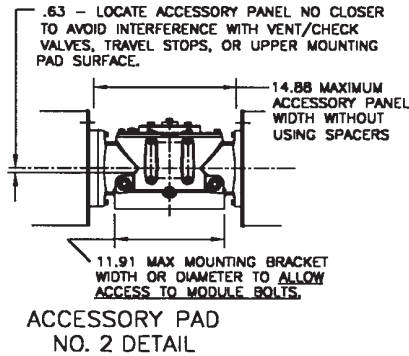
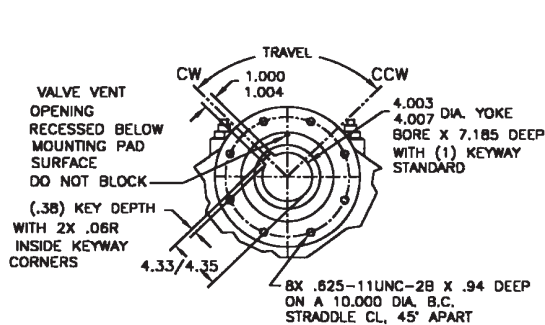
Date: March 2017

G/GC-Series

Dimensions – (Pneumatic) In. G/GC-Series

Double-Acting Actuators
Valve/Accessory Mounting Details

Adjustable End Stops
& Jackscrews



	X (-ETS) Extended Travel Stop	X End Stop	Z (M3/M3HW) Jackscrew
Power Module	33.09	24.53	36.94
Blind End Cap Module	19.57	11.10	22.86
Spring Module	53.30	44.74	55.00

Note: Not Certified dimensional drawings. Such drawings available on request.
 Contact factory with correct model designation and serial number.
 All dimensions are expressed in inches.

BETTIS™


EMERSON™

Data sheet

Sheet No.: GPI 3.11 Rev. C

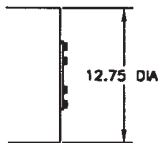
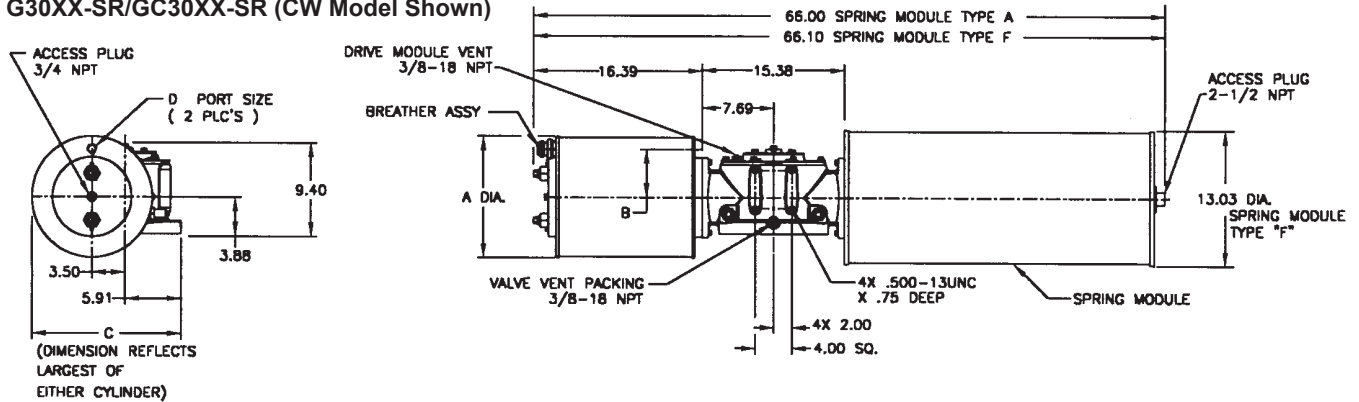
Date: March 2017

G/GC-Series

Dimensions – (Pneumatic) In.

G/GC-Series

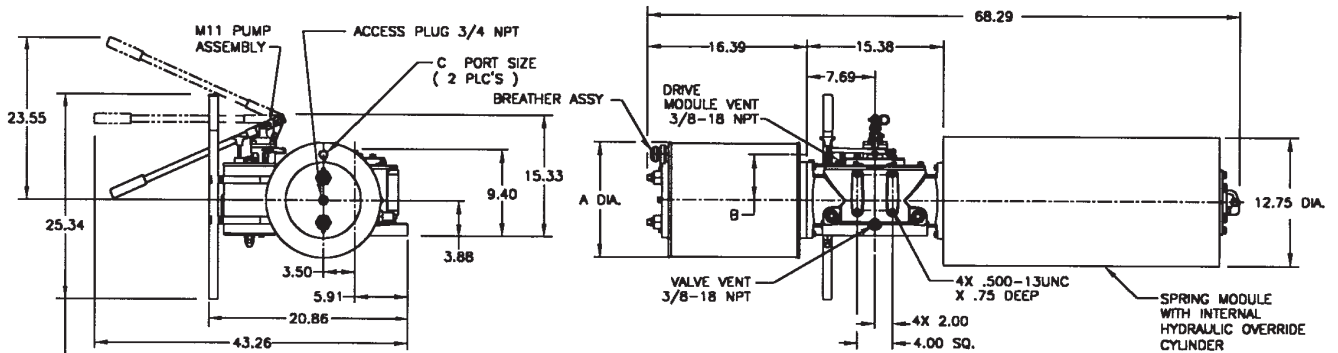
Spring-Return Actuators
G30XX-SR/GC30XX-SR (CW Model Shown)



SPRING MODULE TYPE "A"
 CONFIGURATION FOR
 HYDRAULIC OVERRIDE
 ADAPTABILITY

Actuator Model	A	B	C	D
G3010-SR/GC3010-SR	11.00	4.38	14.91	3/4 NPT
G3012-SR/GC3012-SR	13.00	5.19	15.91	3/4 NPT
G3014-SR/GC3014-SR	14.25	5.68	16.53	3/4 NPT
G3016-SR/GC3016-SR	16.25	6.25	17.53	3/4 NPT
G3020-SR/GC3020-SR	20.25	8.00	19.53	3/4 NPT

G30XX-SR-M11/GC30XX-SR-M11 (CW Model Shown)



NOTE: PUMP HANDLE
 SHOWN STORED, MAY
 BE MOVED UP OR DOWN.

Actuator Model	A	B	C
G3010-SR-M11/GC3010-SR-M11	11.00	4.38	3/4 NPT
G3012-SR-M11/GC3012-SR-M11	13.00	5.19	3/4 NPT
G3014-SR-M11/GC3014-SR-M11	14.25	5.68	3/4 NPT
G3016-SR-M11/GC3016-SR-M11	16.25	6.25	3/4 NPT
G3020-SR-M11/GC3020-SR-M11	20.25	8.00	3/4 NPT

Note: Not Certified dimensional drawings. Such drawings available on request.
 Contact factory with correct model designation and serial number.
 All dimensions are expressed in inches.

BETTIS™


EMERSON™

Data sheet

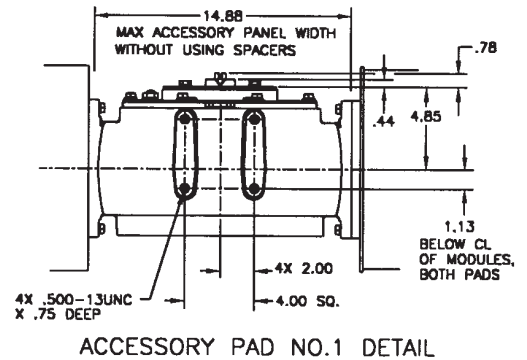
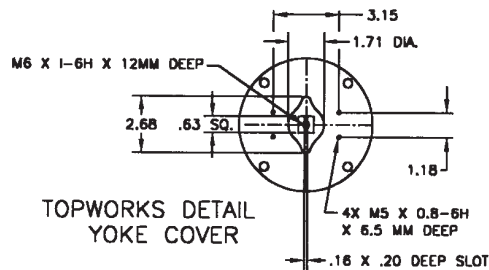
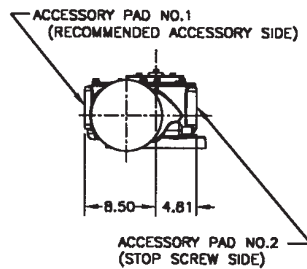
Sheet No.: GPI 3.12 Rev. C

Date: March 2017

G/GC-Series

Dimensions – (Pneumatic) In. G/GC-Series

Spring-Return Actuators
Accessory Details



Note: Not Certified dimensional drawings. Such drawings available on request.
Contact factory with correct model designation and serial number.
All dimensions are expressed in inches.

BETTIS™

Copyright © Emerson. The information in this document is subject to change without notice. Updated data sheets can be obtained from our website www.emerson.com/bettis or from your Emerson Automation Solutions - Actuation Technologies Center:
America's: +1 281 477 4100 Europe: +36 22 53 0950 Asia/Pacific: +65 67 77 8211



EMERSON™

Data sheet

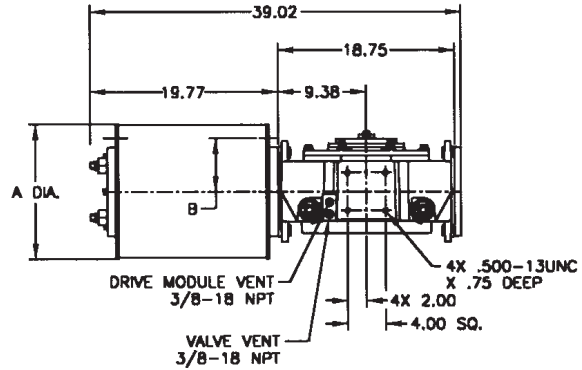
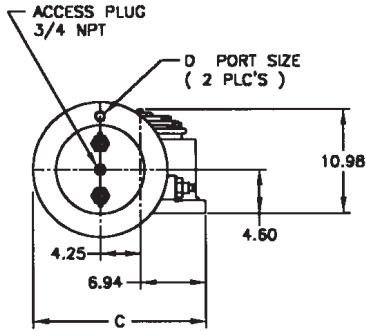
Sheet No.: GPI 3.13 Rev. C

Date: March 2017

G/GC-Series

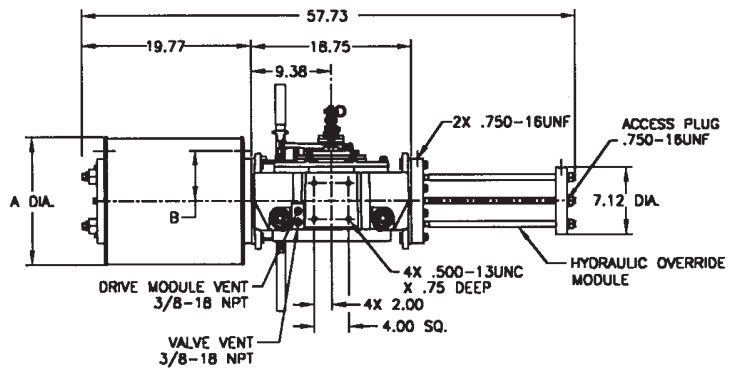
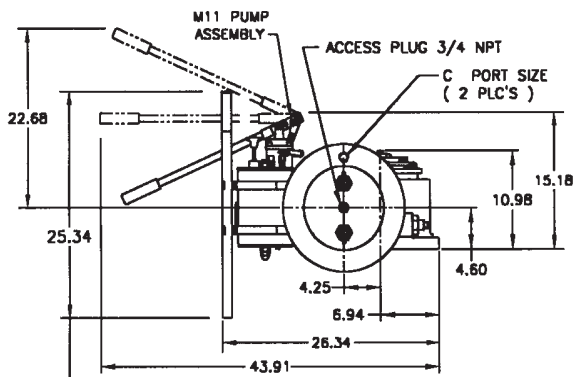
Dimensions – (Pneumatic) In. G/GC-Series

Double-Acting Actuators
G40XX/GC40XX (CW Model Shown)



Actuator Model	A	B	C	D
G4012/GC4012	13.00	5.44	17.69	3/4 NPT
G4014/GC4014	14.25	5.63	18.32	3/4 NPT
G4016/GC4016	16.25	6.25	19.32	3/4 NPT
G4020/GC4020	20.25	8.13	21.32	3/4 NPT
G4024/G4024	24.25	9.63	23.32	3/4 NPT
G4028/GC4028	29.00	11.50	25.69	1.0 NPT

G40XX-M11/GC40XX-M11 (CW Model Shown)



NOTE: PUMP HANDLE SHOWN STORED, MAY BE MOVED UP OR DOWN.

Actuator Model	A	B	C
G4012-M11/GC4012-M11	13.00	5.44	3/4 NPT
G4014-M11/GC4014-M11	14.25	5.63	3/4 NPT
G4016-M11/GC4016-M11	16.25	6.25	3/4 NPT
G4020-M11/GC4020-M11	20.25	8.13	3/4 NPT
G4024-M11/GC4024-M11	24.25	9.63	3/4 NPT
G4028-M11/GC4028-M11	29.00	11.50	1.0 NPT

Note: Not Certified dimensional drawings. Such drawings available on request.
Contact factory with correct model designation and serial number.
All dimensions are expressed in inches.

BETTIS™

EMERSON™

Data sheet

Sheet No.: GPI 3.14 Rev. C

Date: March 2017

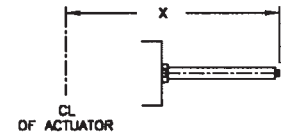
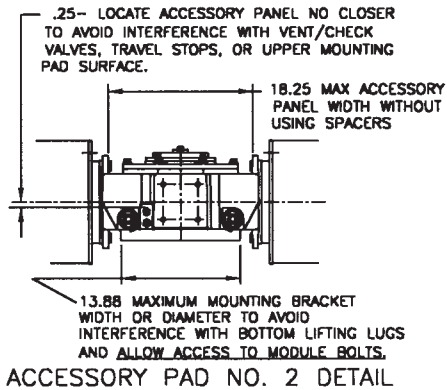
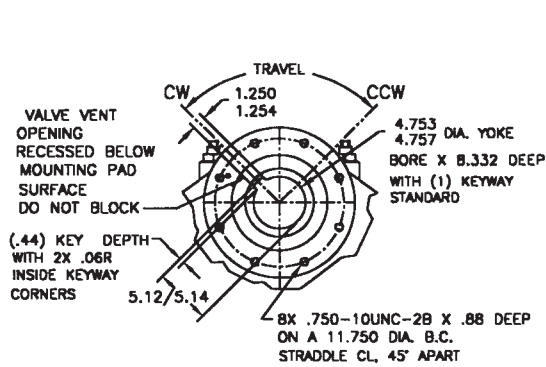
G/GC-Series

Dimensions – (Pneumatic) In.

G/GC-Series

Double-Acting Actuators
Valve/Accessory Mounting Details

Adjustable End Stops



	X Extended Travel Stop	X End Stop
Power Module	39.74	31.12
Blind End Cap Module	23.32	14.70
Spring Module	60.61	52.00

Note: Not Certified dimensional drawings. Such drawings available on request.
Contact factory with correct model designation and serial number.
All dimensions are expressed in inches.

BETTIS™


EMERSON™

Copyright © Emerson. The information in this document is subject to change without notice. Updated data sheets can be obtained from our website www.emerson.com/bettis or from your Emerson Automation Solutions - Actuation Technologies Center:
Americas: +1 281 477 4100 Europe: +36 22 53 0950 Asia/Pacific: +65 67 77 8211

Data sheet

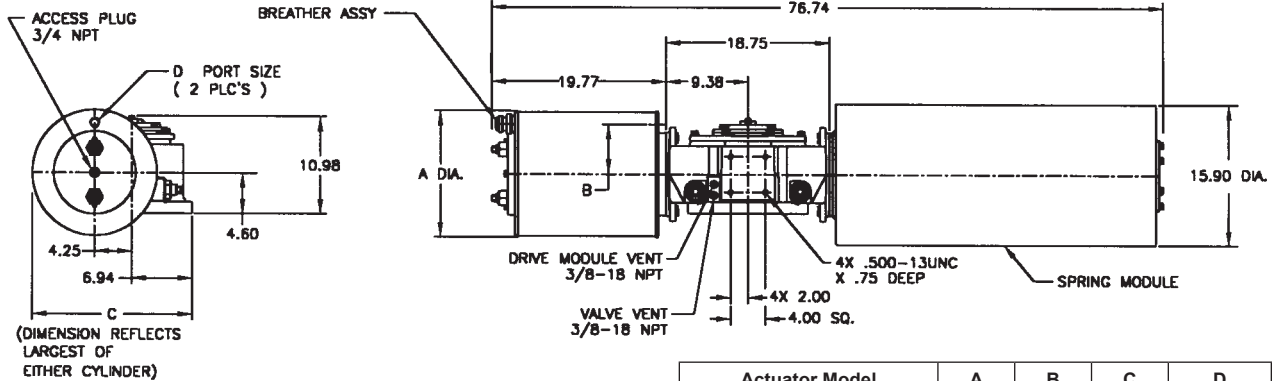
Sheet No.: GPI 3.15 Rev. C

Date: March 2017

G/GC-Series

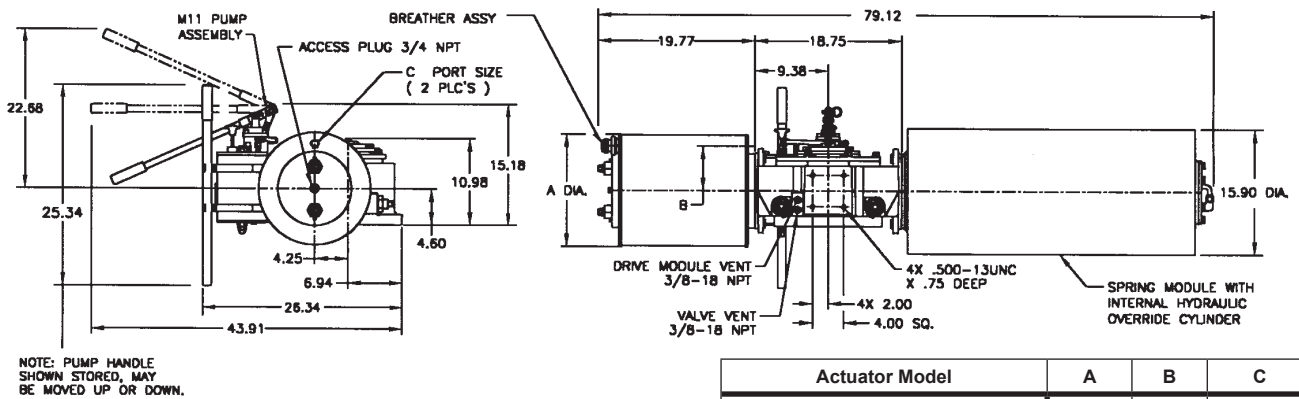
Dimensions – (Pneumatic) In. G/GC-Series

Spring-Return Actuators
G40XX-SRX/GC40XX-SRX (CW Model Shown)



Actuator Model	A	B	C	D
G4012-SR/GC4012-SR	13.00	5.44	19.14	3/4 NPT
G4014-SR/GC4014-SR	14.25	5.63	19.14	3/4 NPT
G4016-SR/GC4016-SR	16.25	6.25	19.32	3/4 NPT
G4020-SR/GC4020-SR	20.25	8.13	21.32	3/4 NPT
G4024-SR/GC4024-SR	24.25	9.63	23.32	3/4 NPT
G4028-SR/GC4028-SR	29.00	11.50	25.69	1.0 NPT

G40XX-SRX-M11/GC40XX-SRX-M11 (CW Model Shown)



Actuator Model	A	B	C
G4012-SR-M11/GC4012-SR-M11	13.00	5.44	3/4 NPT
G4014-SR-M11/GC4014-SR-M11	14.25	5.63	3/4 NPT
G4016-SR-M11/GC4016-SR-M11	16.25	6.25	3/4 NPT
G4020-SR-M11/GC4020-SR-M11	20.25	8.13	3/4 NPT
G4024-SR-M11/GC4024-SR-M11	24.25	9.63	3/4 NPT
G4028-SR-M11/GC4028-SR-M11	29.00	11.50	1.0 NPT

Note: Not Certified dimensional drawings. Such drawings available on request.
Contact factory with correct model designation and serial number.
All dimensions are expressed in inches.

BETTIS™

EMERSON™

Data sheet

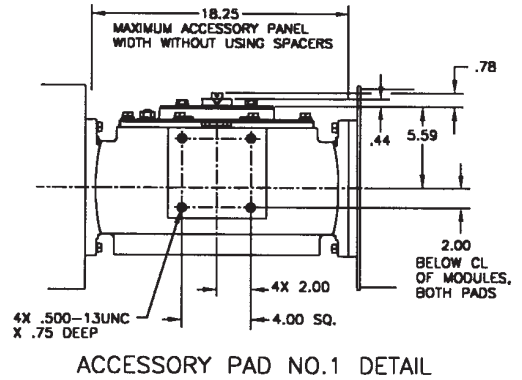
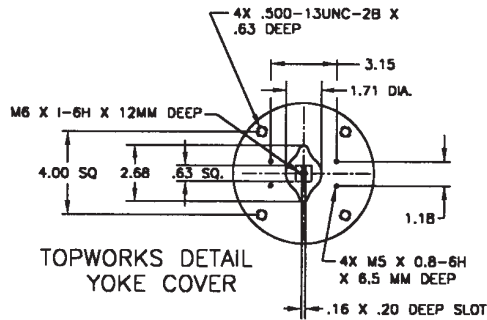
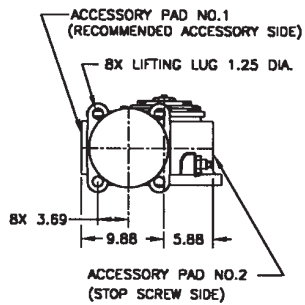
Sheet No.: GPI 3.16 Rev. C

Date: March 2017

G/GC-Series

Dimensions – (Pneumatic) In. G/GC-Series

Spring-Return Actuators Lug/Accessory Details



Note: Not Certified dimensional drawings. Such drawings available on request.
Contact factory with correct model designation and serial number.
All dimensions are expressed in inches.

BETTIS™

Copyright © Emerson. The information in this document is subject to change without notice. Updated data sheets can be obtained from our website www.emerson.com/bettis or from your Emerson Automation Solutions - Actuation Technologies Center:
America's: +1 281 477 4100 Europe: +36 22 53 0950 Asia/Pacific: +65 67 77 8211



EMERSON™

Data sheet

Sheet No.: GPI 3.17 Rev. C

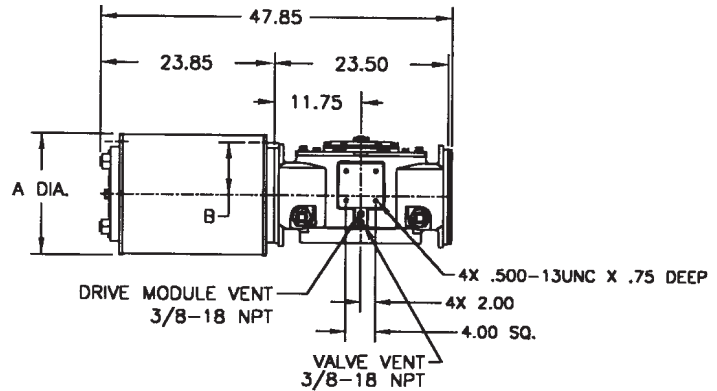
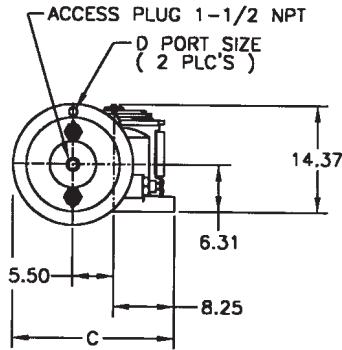
Date: March 2017

G/GC-Series

Dimensions – (Pneumatic) In. G/GC-Series

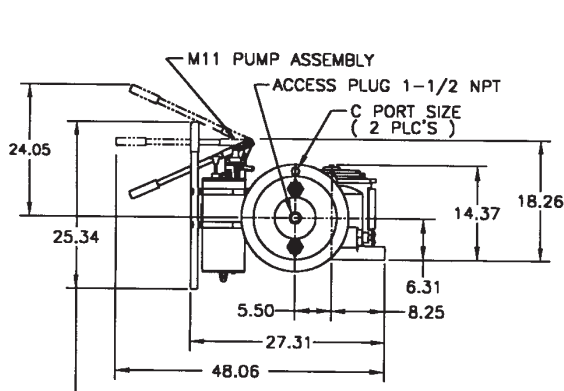
Double-Acting Actuators

G50XX/GC50XX (CW Model Shown)

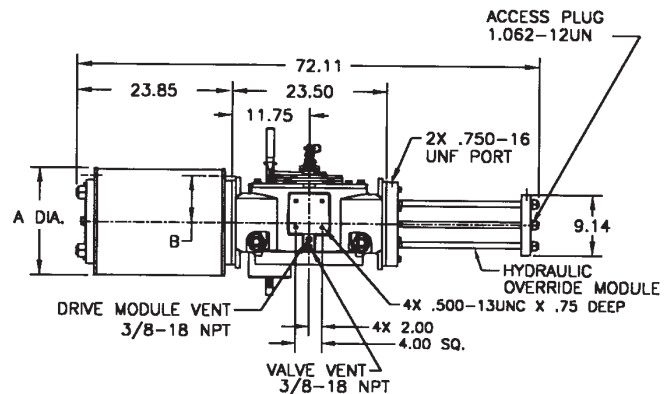


Actuator Model	A	B	C	D
G5016/GC5016	16.25	7.06	21.88	3/4 NPT
G5020/GC5020	20.25	8.00	23.88	3/4 NPT
G5024/GC5024	24.25	9.25	25.88	1 NPT
G5028/GC5028	29.00	12.06	28.25	1 NPT
G5032/GC5032	33.00	14.00	30.25	1-1/2 NPT
G5036/GC5036	37.25	16.00	32.38	1-1/2 NPT

G50XX-M11/GC50XX-M11 (CW Model Shown)



NOTE: PUMP HANDLE SHOWN STORED, MAY BE MOVED UP OR DOWN.



Actuator Model	A	B	C
G5016-M11/GC5016-M11	16.25	7.06	3/4 NPT
G5020-M11/GC5020-M11	20.25	8.00	3/4 NPT
G5024-M11/GC5024-M11	24.25	9.25	1 NPT
G5028-M11/GC5028-M11	29.00	12.06	1 NPT
G5032-M11/GC5032-M11	33.00	14.00	1-1/2 NPT
G5036-M11/GC5036-M11	37.25	16.00	1-1/2 NPT

Note: Not Certified dimensional drawings. Such drawings available on request.
Contact factory with correct model designation and serial number.
All dimensions are expressed in inches.

BETTIS

EMERSON

Data sheet

Sheet No.: GPI 3.18 Rev. C

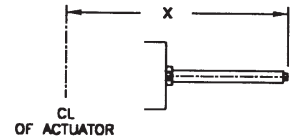
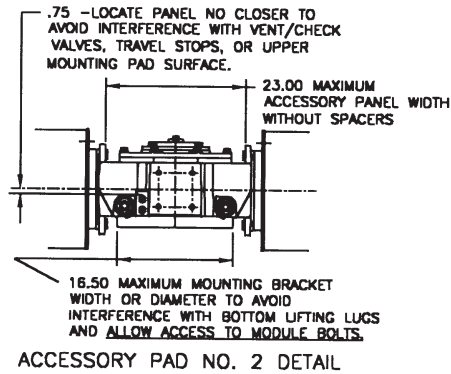
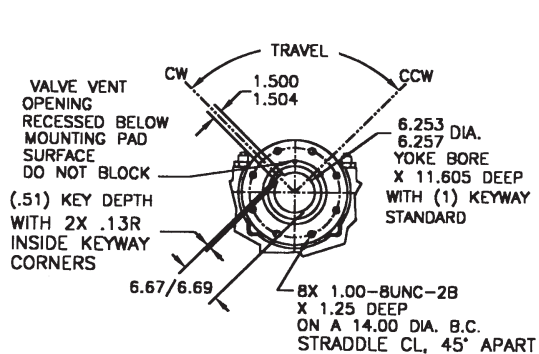
Date: March 2017

G/GC-Series

Dimensions – (Pneumatic) In. G/GC-Series

Double-Acting Actuators
Valve/Accessory Mounting Details

Adjustable End Stops



	X Extended Travel Stop	X End Stop
Power Module	50.07	38.58
Blind End Cap Module	28.25	17.38
Spring Module	70.50	42.48

Note: Not Certified dimensional drawings. Such drawings available on request.
Contact factory with correct model designation and serial number.
All dimensions are expressed in inches.

BETTIS™


EMERSON™

Copyright © Emerson. The information in this document is subject to change without notice. Updated data sheets can be obtained from our website www.emerson.com/bettis or from your Emerson Automation Solutions - Actuation Technologies Center:
America's: +1 281 477 4100 Europe: +36 22 53 0950 Asia/Pacific: +65 67 77 8211

Data sheet

Sheet No.: GPI 3.19 Rev. C

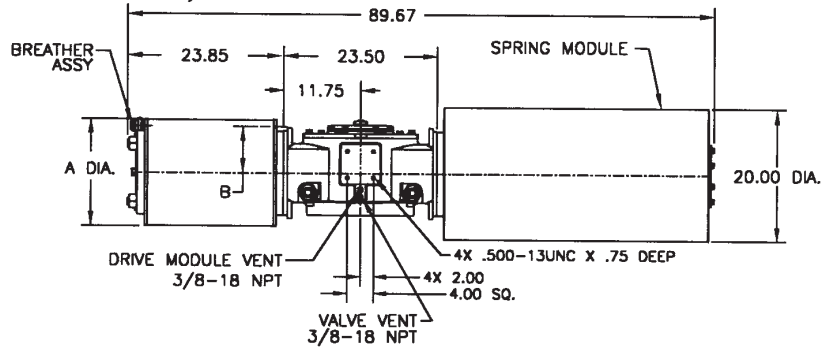
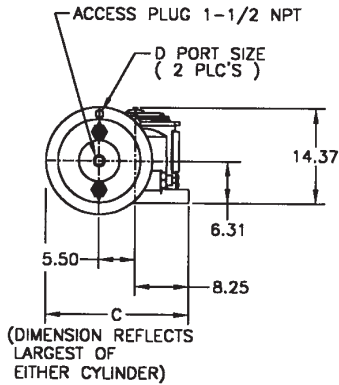
Date: March 2017

G/GC-Series

Dimensions – (Pneumatic) In.

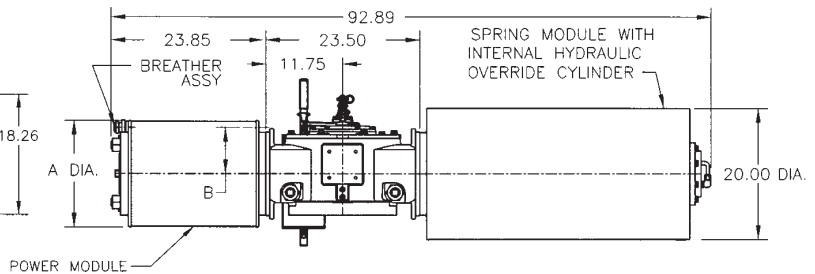
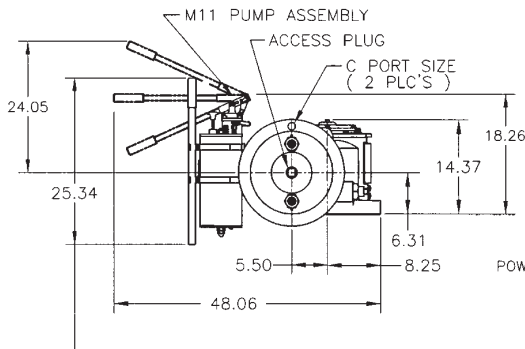
G/GC-Series

Spring-Return Actuators
G50XX-SR/GC50XX-SR (CW Model Shown)



Actuator Model	A	B	C	D
G5016-SR/GC5016-SR	16.25	7.06	23.75	3/4 NPT
G5020-SR/GC5020-SR	20.25	8.00	23.88	3/4 NPT
G5024-SR/GC5024-SR	24.25	9.25	25.88	1 NPT
G5028-SR/GC5028-SR	29.00	12.06	28.25	1 NPT
G5032-SR/GC5032-SR	33.00	14.00	30.25	1-1/2 NPT
G5036-SR/GC5036-SR	37.25	16.00	32.38	1-1/2 NPT

G50XX-SR-M11/GC50XX-SR-M11 (CW Model Shown)



NOTE: PUMP HANDLE SHOWN STORED, MAY BE MOVED UP OR DOWN.

Actuator Model	A	B	C
G5016-SR-M11/GC5016-SR-M11	16.25	7.06	3/4 NPT
G5020-SR-M11/GC5020-SR-M11	20.25	8.00	3/4 NPT
G5024-SR-M11/GC5024-SR-M11	24.25	9.25	1 NPT
G5028-SR-M11/GC5028-SR-M11	29.00	12.06	1 NPT
G5032-SR-M11/GC5032-SR-M11	33.00	14.00	1-1/2 NPT
G5036-SR-M11/GC5036-SR-M11	37.25	16.00	1-1/2 NPT

Note: Not Certified dimensional drawings. Such drawings available on request. Contact factory with correct model designation and serial number. All dimensions are expressed in inches.

BETTIS™

EMERSON™

Data sheet

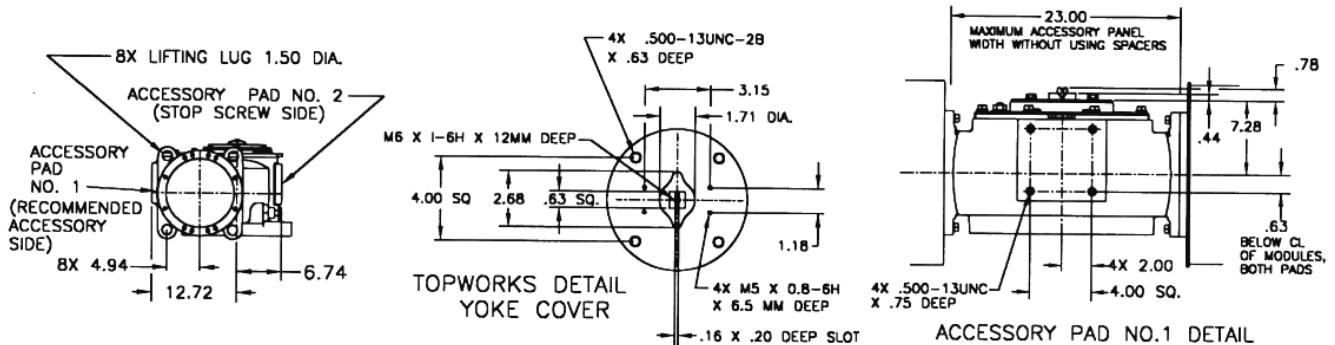
Sheet No.: GPI 3.20 Rev. C

Date: March 2017

G/GC-Series

Dimensions – (Pneumatic) In. G/GC-Series

Spring-Return Actuators
Lug/Accessory Details



Note: Not Certified dimensional drawings. Such drawings available on request.
Contact factory with correct model designation and serial number.
All dimensions are expressed in inches.

BETTIS[™]

Copyright © Emerson. The information in this document is subject to change without notice. Updated data sheets can be obtained from our website www.emerson.com/bettis or from your Emerson Automation Solutions - Actuation Technologies Center:
America's: +1 281 477 4100 Europe: +36 22 53 0950 Asia/Pacific: +65 67 77 8211


EMERSON[™]

Data sheet

Sheet No.: GPI 3.21 Rev. C

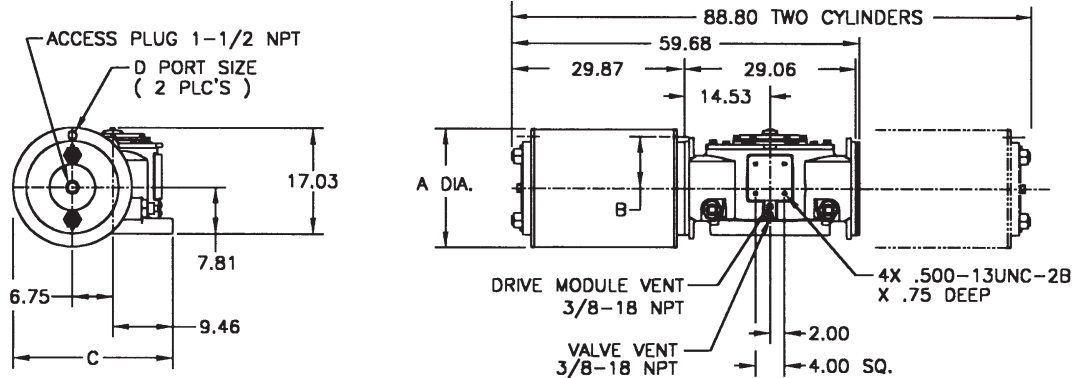
Date: March 2017

G/GC-Series

Dimensions – (Pneumatic) In. G/GC-Series

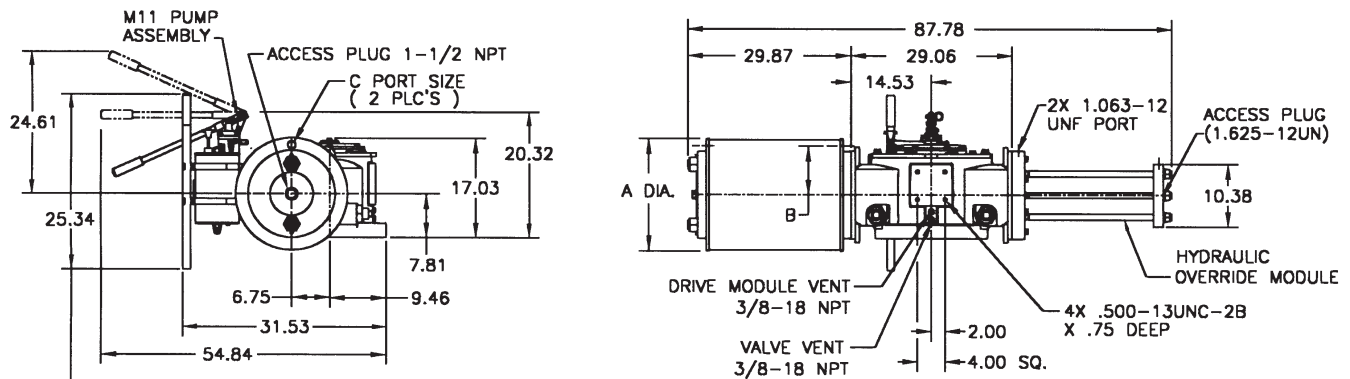
Double-Acting Actuators

G70XX/GC70XX or G702XX/GC702XX (CW Model Shown)



Actuator Model	A	B	C	D
G7020/GC7020	20.25	8.75	26.34	3/4 NPT
G7024/GC7024	24.25	9.63	28.34	1 NPT
G7028/GC7028	29.00	11.25	30.71	1-1/2 NPT
G7032/GC7032	33.00	14.00	32.71	1-1/2 NPT
G7036/GC7036	37.25	16.00	34.84	1-1/2 NPT
G70228/GC70228	29.00	11.25	30.71	1-1/2 NPT

G70XX-M11/GC70XX-M11 (CW Model Shown)



NOTE: PUMP HANDLE SHOWN STORED, MAY BE MOVED UP OR DOWN.

Actuator Model	A	B	C
G7020-M11/GC7020-M11	20.25	8.75	3/4 NPT
G7024-M11/GC7024-M11	24.25	9.63	1 NPT
G7028-M11/GC7028-M11	29.00	11.25	1-1/2 NPT
G7032-M11/GC7032-M11	33.00	14.00	1-1/2 NPT
G7036-M11/GC7036-M11	37.25	16.00	1-1/2 NPT

Note: Not Certified dimensional drawings. Such drawings available on request. Contact factory with correct model designation and serial number. All dimensions are expressed in inches.

BETTIS

EMERSON

Data sheet

Sheet No.: GPI 3.22 Rev. C

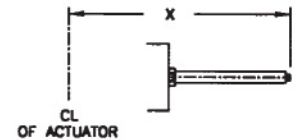
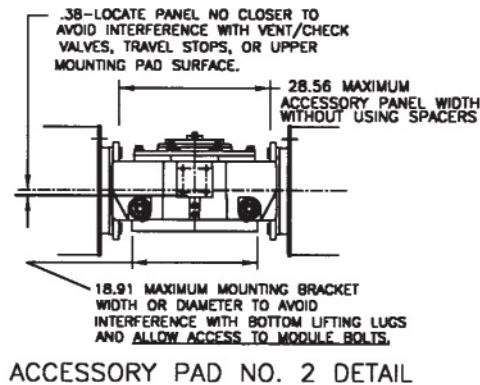
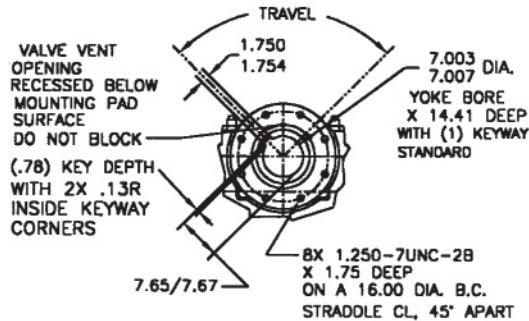
Date: March 2017

G/GC-Series

Dimensions – (Pneumatic) In. G/GC-Series

Double-Acting Actuators Valve/Accessory Mounting Details

Adjustable End Stops



	X Extended Travel Stop	X End Stop
Power Module	60.97	46.72
Blind End Cap Module	35.53	21.28
Spring Module	91.10	54.44

Note: Not Certified dimensional drawings. Such drawings available on request.
Contact factory with correct model designation and serial number.
All dimensions are expressed in inches.

BETTIS™

Copyright © Emerson. The information in this document is subject to change without notice. Updated data sheets can be obtained from our website www.emerson.com/bettis or from your Emerson Automation Solutions - Actuation Technologies Center:
America's: +1 281 477 4100 Europe: +36 22 53 0950 Asia/Pacific: +65 67 77 8211


EMERSON™

Data sheet

Sheet No.: GPI 3.23 Rev. C

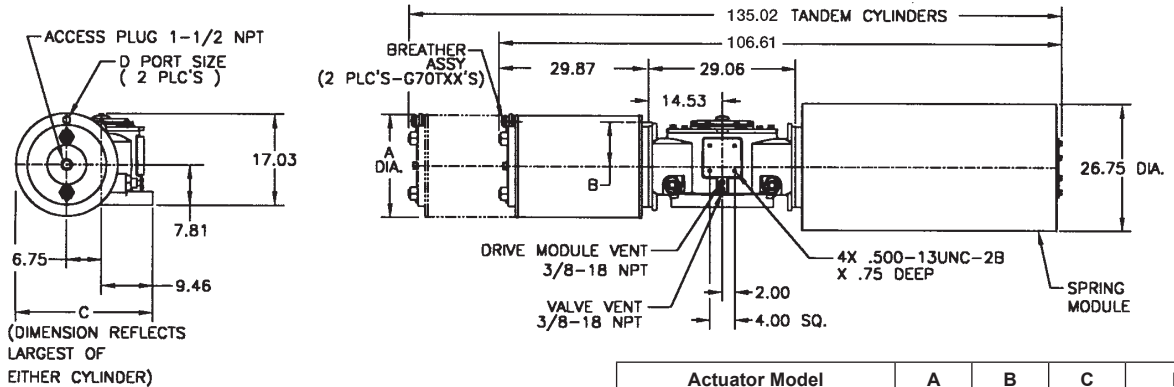
Date: March 2017

G/GC-Series

Dimensions – (Pneumatic) In. G/GC-Series

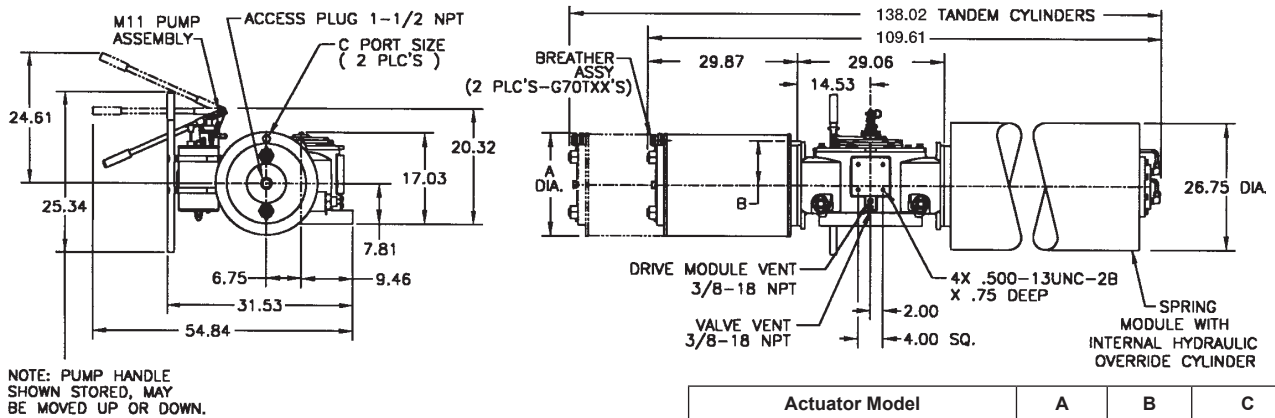
Spring-Return Actuators

G70XX-SR/GC70XX-SR or G70TXX-SR/GC70TXX-SR (CW Model Shown)



Actuator Model	A	B	C	D
G7020-SR/GC7020-SR	20.25	8.75	29.59	3/4 NPT
G7024-SR/GC7024-SR	24.25	9.63	29.59	1 NPT
G7028-SR/GC7028-SR	29.00	11.25	30.71	1-1/2 NPT
G7032-SR/GC7032-SR	33.00	14.00	32.71	1-1/2 NPT
G7036-SR/GC7036-SR	37.25	16.00	34.84	1-1/2 NPT
G70T28-SR/GC70T28-SR	29.00	11.25	30.71	1-1/2 NPT

G70XX-SR-M11/GC70XX-SR-M11 or G70TXX-SR-M11/GC70TXX-SR-M11 (CW Model Shown)



NOTE: PUMP HANDLE SHOWN STORED, MAY BE MOVED UP OR DOWN.

Actuator Model	A	B	C
G7020-SR-M11/GC7020-SR-M11	20.25	8.75	3/4 NPT
G7024-SR-M11/GC7024-SR-M11	24.25	9.63	1 NPT
G7028-SR-M11/GC7028-SR-M11	29.00	11.25	1-1/2 NPT
G7032-SR-M11/GC7032-SR-M11	33.00	14.00	1-1/2 NPT
G7036-SR-M11/GC7036-SR-M11	37.25	16.00	1-1/2 NPT
G70T28-SR-M11/GC70T28-SR-M11	29.00	11.25	1-1/2 NPT

Note: Not Certified dimensional drawings. Such drawings available on request. Contact factory with correct model designation and serial number. All dimensions are expressed in inches.

BETTIS™

EMERSON™

Data sheet

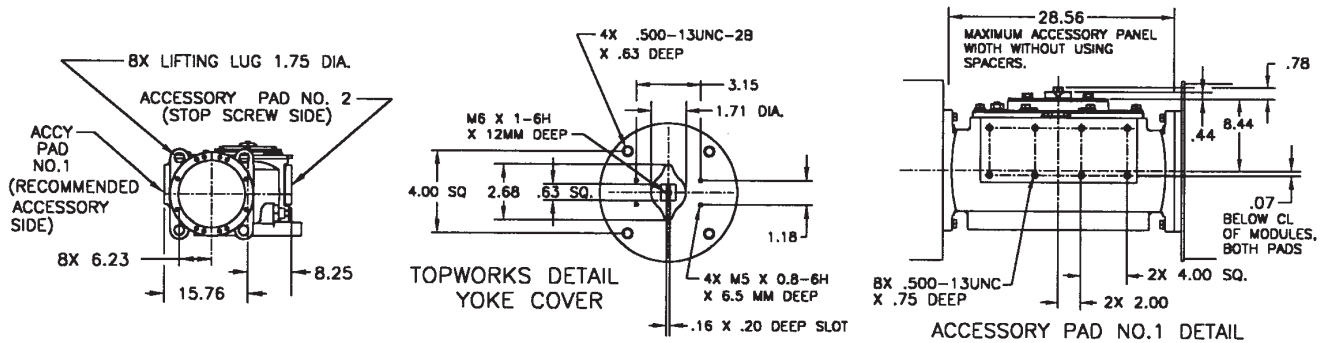
Sheet No.: GPI 3.24 Rev. C

Date: March 2017

G/GC-Series

Dimensions – (Pneumatic) In. G/GC-Series

Spring-Return Actuators
Lug/Accessory Details



Note: Not Certified dimensional drawings. Such drawings available on request.
Contact factory with correct model designation and serial number.
All dimensions are expressed in inches.

BETTIS™

Copyright © Emerson. The information in this document is subject to change without notice. Updated data sheets can be obtained from our website www.emerson.com/bettis or from your Emerson Automation Solutions - Actuation Technologies Center:
America's: +1 281 477 4100 Europe: +36 22 53 0950 Asia/Pacific: +65 67 77 8211



EMERSON™

Data sheet

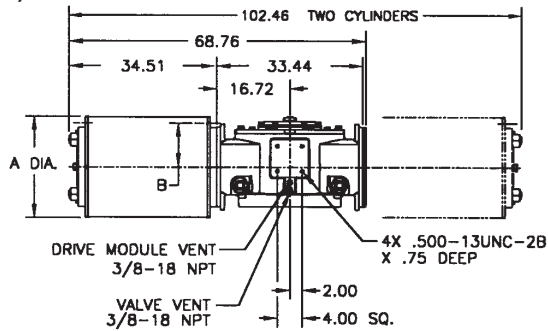
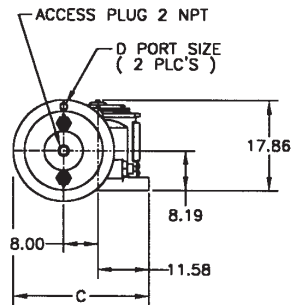
Sheet No.: GPI 3.25 Rev. C

Date: March 2017

G/GC-Series

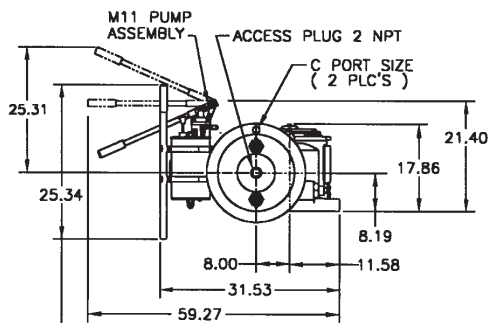
Dimensions – (Pneumatic) In. G/GC-Series

Double-Acting Actuators
G80XX/GC80XX or G802XX/GC802XX (CW Model Shown)

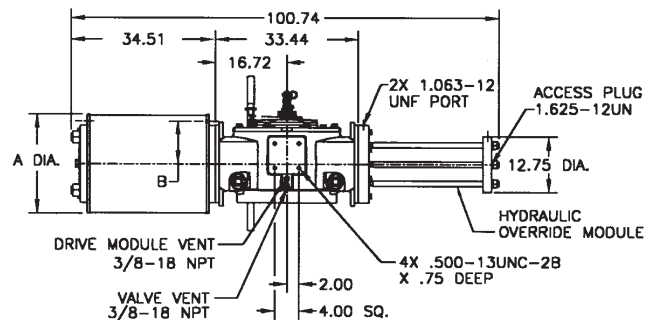


Actuator Model	A	B	C	D
G8024/GC8024	24.25	9.63	31.71	1 NPT
G8028/GC8028	29.00	12.38	34.08	1-1/2 NPT
G8032/GC8032	33.00	13.38	36.08	1-1/2 NPT
G8036/GC8036	37.25	16.00	38.21	1-1/2 NPT
G8040/GC8040	41.25	18.00	40.21	2 NPT
G80232/GC80232	33.00	13.38	36.08	1-1/2 NPT
G80236/GC80236	37.25	16.00	38.21	1-1/2 NPT

G80XX-M11/GC80XX-M11 (CW Model Shown)



NOTE: PUMP HANDLE SHOWN STORED, MAY BE MOVED UP OR DOWN.



Actuator Model	A	B	C
G8024-M11/GC8024-M11	24.25	9.63	1 NPT
G8028-M11/GC8028-M11	29.00	12.38	1-1/2 NPT
G8032-M11/GC8032-M11	33.00	13.38	1-1/2 NPT
G8036-M11/GC8036-M11	37.25	16.00	1-1/2 NPT
G8040-M11/GC8040-M11	41.25	18.00	2 NPT

Note: Not Certified dimensional drawings. Such drawings available on request. Contact factory with correct model designation and serial number. All dimensions are expressed in inches.

BETTIS™

EMERSON™

Data sheet

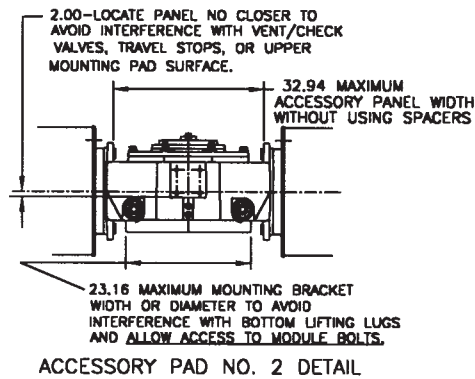
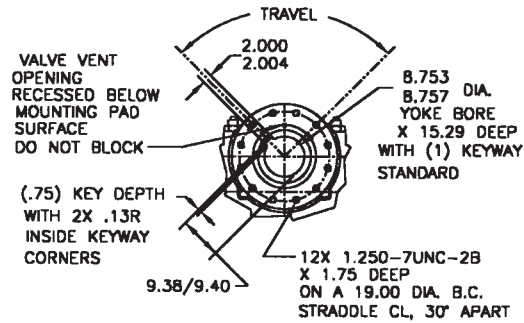
Sheet No.: GPI 3.26 Rev. C

Date: March 2017

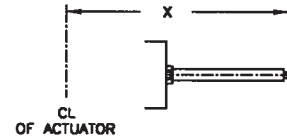
G/GC-Series

Dimensions – (Pneumatic) In. G/GC-Series

**Double-Acting Actuators
Valve/Accessory Mounting Details**



Adjustable End Stops



	X Extended Travel Stop	X End Stop
Power Module	70.94	54.39
Blind End Cap Module	40.66	24.92
Spring Module	112.04	71.00

Note: Not Certified dimensional drawings. Such drawings available on request.
Contact factory with correct model designation and serial number.
All dimensions are expressed in inches.

BETTIS™

Copyright © Emerson. The information in this document is subject to change without notice. Updated data sheets can be obtained from our website www.emerson.com/bettis or from your Emerson Automation Solutions - Actuation Technologies Center:
America's: +1 281 477 4100 Europe: +36 22 53 0950 Asia/Pacific: +65 67 77 8211

EMERSON™

Data sheet

Sheet No.: GPI 3.27 Rev. C

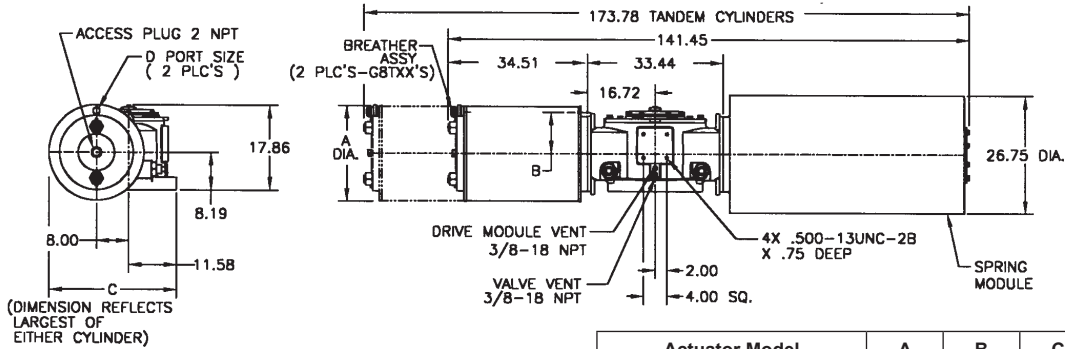
Date: March 2017

G/GC-Series

Dimensions – (Pneumatic) In. G/GC-Series

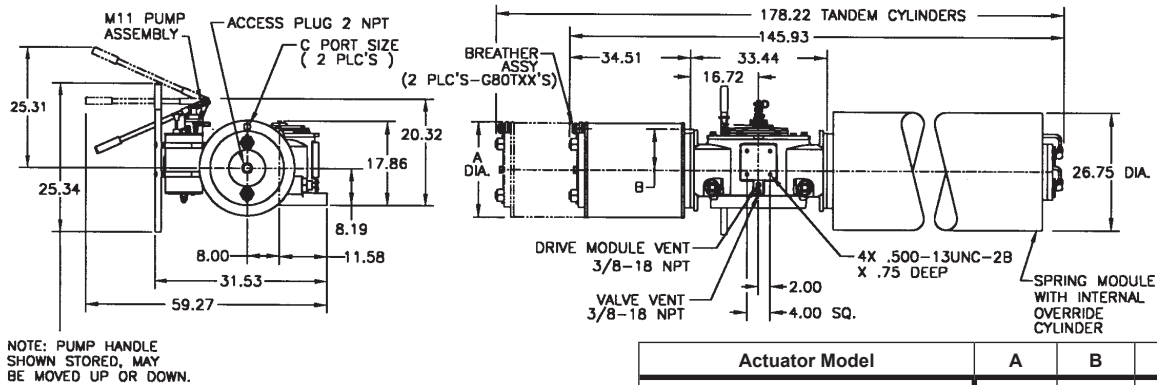
Spring-Return Actuators

G80XX-SR/GC80XX-SR or G80TXX-SR/GC80TXX-SR (CW Model Shown)



Actuator Model	A	B	C	D
G8024-SR/GC8024-SR	24.25	9.63	32.96	1 NPT
G8028-SR/GC8028-SR	29.00	12.38	34.08	1-1/2 NPT
G8032-SR/GC8032-SR	33.00	13.38	36.08	1-1/2 NPT
G8036-SR/GC8036-SR	37.25	16.00	38.21	1-1/2 NPT
G8040-SR/GC8040-SR	41.25	18.00	40.21	2 NPT
G80T32-SR/GC80T32-SR	33.00	13.38	36.08	1-1/2 NPT
G80T36-SR/GC80T36-SR	37.25	16.00	38.21	1-1/2 NPT

G80XX-SR-M11/GC80XX-SR-M11 or G80TXX-SR-M11/GC80TXX-SR-M11 (CW Model Shown)



Actuator Model	A	B	C
G8024-SR-M11/GC8024-SR-M11	24.25	9.63	1 NPT
G8028-SR-M11/ GC8028-SR-M11	29.00	12.38	1-1/2 NPT
G8032-SR-M11/GC8032-SR-M11	33.00	13.38	1-1/2 NPT
G8036-SR-M11/GC8036-SR-M11	37.25	16.00	1-1/2 NPT
G8040-SR-M11/GC8040-SR-M11	41.25	18.00	2 NPT
G80T32-SR-M11/GC80T32-SR-M11	33.00	13.38	1-1/2 NPT
G80T36-SR-M11/GC80T36-SR-M11	37.25	16.00	1-1/2 NPT

Note: Not Certified dimensional drawings. Such drawings available on request.
Contact factory with correct model designation and serial number.
All dimensions are expressed in inches.

BETTIS™

EMERSON™

Data sheet

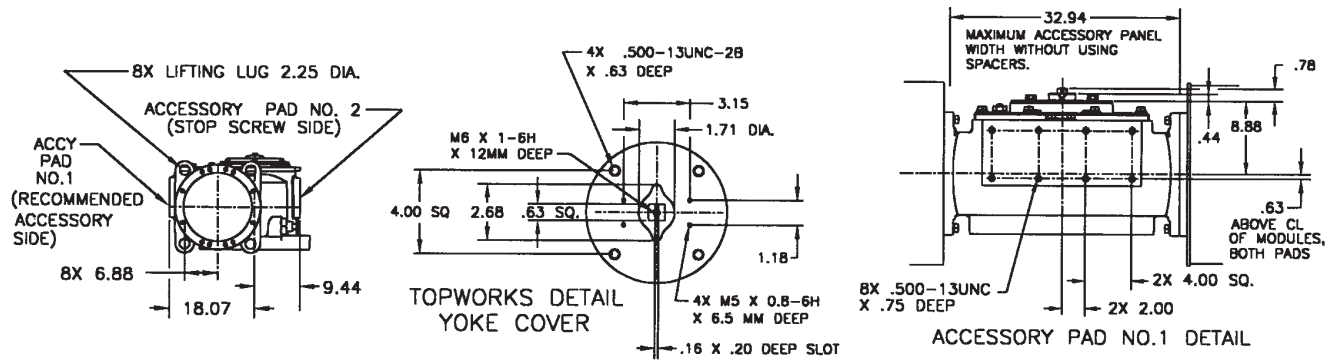
Sheet No.: GPI 3.28 Rev. C

Date: March 2017

G/GC-Series

Dimensions – (Pneumatic) In. G/GC-Series

Spring-Return Actuators
Lug/Accessory Details



Note: Not Certified dimensional drawings. Such drawings available on request.
Contact factory with correct model designation and serial number.
All dimensions are expressed in inches.

BETTIS[™]

Copyright © Emerson. The information in this document is subject to change without notice. Updated data sheets can be obtained from our website www.emerson.com/bettis or from your Emerson Automation Solutions - Actuation Technologies Center:
America's: +1 281 477 4100 Europe: +36 22 53 0950 Asia/Pacific: +65 67 77 8211



EMERSON[™]

Data sheet

Sheet No.: GPI 3.29 Rev. C

Date: March 2017

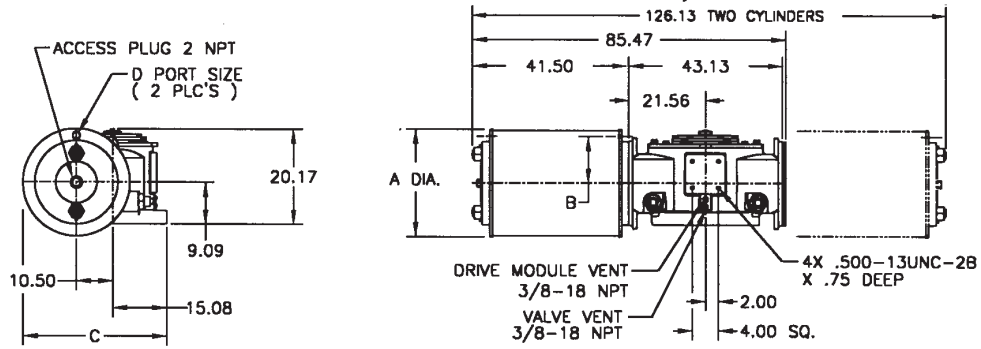
G/GC-Series

Dimensions – (Pneumatic) In.

G/GC-Series

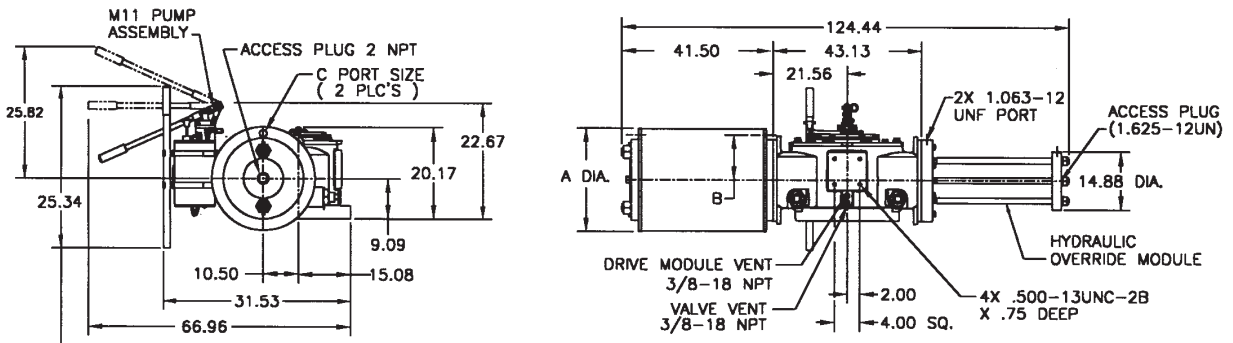
Double-Acting Actuators

G100XX/GC100XX or G1002XX/GC1002XX (CW Model Shown)



Actuator Model	A	B	C	D
G10028/GC10028	29.00	12.38	40.08	1-1/2 NPT
G10032/GC10032	33.00	13.38	42.08	1-1/2 NPT
G10036/GC10036	37.25	16.00	44.21	2 NPT
G10040/GC10040	41.25	18.00	46.21	2 NPT
G100232/GC100232	33.00	13.38	42.08	1-1/2 NPT
G100236/GC100236	37.25	16.00	44.21	2 NPT
G100240/GC100240	41.25	18.00	46.21	2 NPT

G100XX-M11/GC100XX-M11 (CW Model Shown)



NOTE: PUMP HANDLE SHOWN STORED, MAY BE MOVED UP OR DOWN.

Actuator Model	A	B	C
G10028-M11/GC10028-M11	29.00	12.38	1-1/2 NPT
G10032-M11/GC10032-M11	33.00	13.38	1-1/2 NPT
G10036-M11/GC10036-M11	37.25	16.00	2 NPT
G10040-M11/GC10040-M11	41.25	18.00	2 NPT

Note: Not Certified dimensional drawings. Such drawings available on request. Contact factory with correct model designation and serial number. All dimensions are expressed in inches.

BETTIS™

EMERSON™

Data sheet

Sheet No.: GPI 3.30 Rev. C

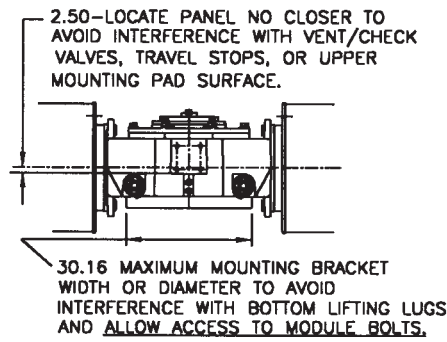
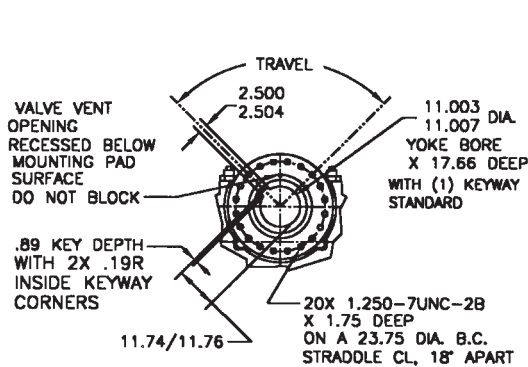
Date: March 2017

G/GC-Series

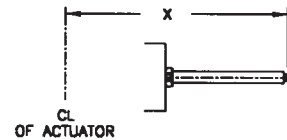
Dimensions – (Pneumatic) In. G/GC-Series

Double-Acting Actuators
Valve/Accessory Mounting Details

Adjustable End Stops



ACCESSORY PAD NO. 2 DETAIL



	X Extended Travel Stop	X End Stop
Power Module	89.08	80.08
Blind End Cap Module	C/F	C/F
Spring Module	C/F	C/F

C/F Consult Factory

Note: Not Certified dimensional drawings. Such drawings available on request.
Contact factory with correct model designation and serial number.
All dimensions are expressed in inches.

BETTIS™


EMERSON™

Copyright © Emerson. The information in this document is subject to change without notice. Updated data sheets can be obtained from our website www.emerson.com/bettis or from your Emerson Automation Solutions - Actuation Technologies Center:
America's: +1 281 477 4100 Europe: +36 22 53 0950 Asia/Pacific: +65 67 77 8211

Data sheet

Sheet No.: GPI 3.31 Rev. C

Date: March 2017

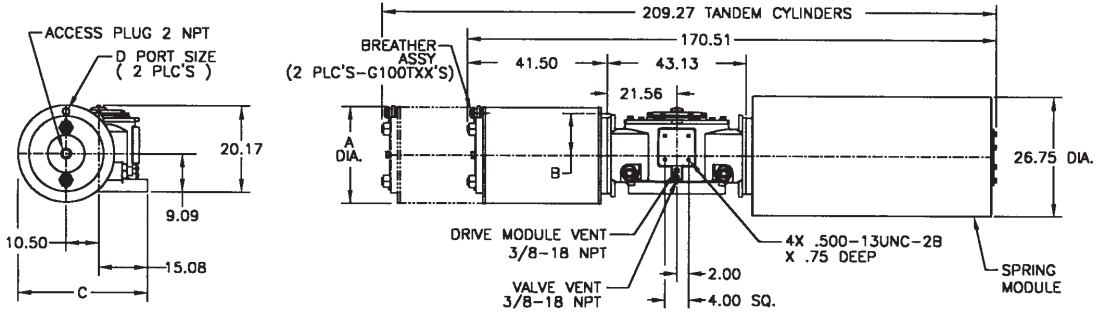
G/GC-Series

Dimensions – (Pneumatic) In.

G/GC-Series

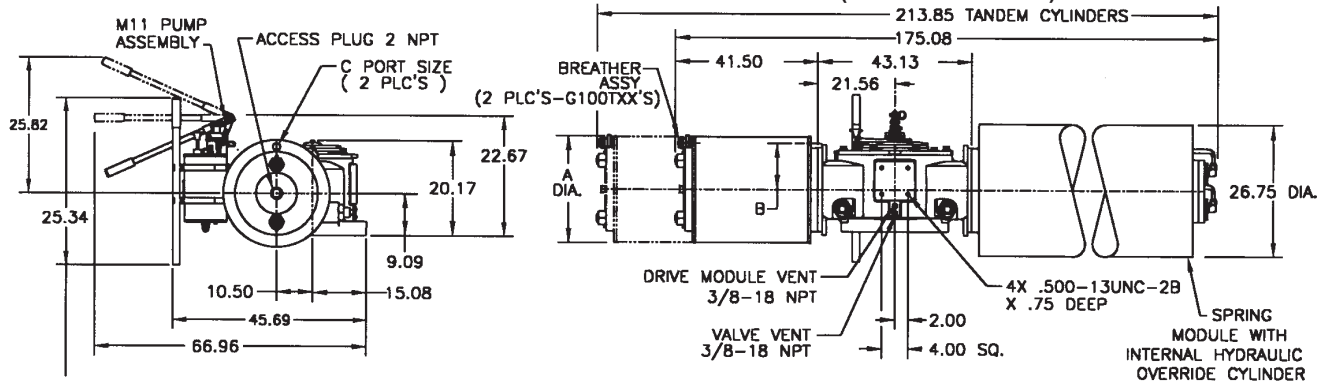
Spring-Return Actuators

G100XX-SR/GC100XX-SR or G100TXX-SR/GC100TXX-SR (CW Model Shown)



Actuator Model	A	B	C	D
G10028-SR/GC10028-SR	29.00	12.38	40.08	1-1/2 NPT
G10032-SR/GC10032-SR	33.00	13.38	42.08	1-1/2 NPT
G10036-SR/GC10036-SR	37.25	16.00	44.21	2 NPT
G10040-SR/GC10040-SR	41.25	18.00	46.21	2 NPT
G100T32-SR/GC100T32-SR	33.00	13.38	42.08	1-1/2 NPT
G100T36-SR/GC100T36-SR	37.25	16.00	44.21	2 NPT
G100T40-SR/GC100T40-SR	41.25	18.00	46.21	2 NPT

G100XX-SR-M11/GC100XX-SR-M11 or G100TXX-SR-M11/GC100TXX-SR-M11 (CW Model Shown)



NOTE: PUMP HANDLE SHOWN STORED, MAY BE MOVED UP OR DOWN.

Actuator Model	A	B	C
G10028-SR-M11/GC10028-SR-M11	29.00	12.38	1-1/2 NPT
G10032-SR-M11/GC10032-SR-M11	33.00	13.38	1-1/2 NPT
G10036-SR-M11/GC10036-SR-M11	37.25	16.00	2 NPT
G10040-SR-M11/GC10040-SR-M11	41.25	18.00	2 NPT
G100T32-SR-M11/GC100T32-SR-M11	33.00	13.38	1-1/2 NPT
G100T36-SR-M11/GC100T36-SR-M11	37.25	16.00	2 NPT
G100T40-SR-M11/GC100T40-SR-M11	41.25	18.00	2 NPT

Note: Not Certified dimensional drawings. Such drawings available on request. Contact factory with correct model designation and serial number. All dimensions are expressed in inches.

BETTIS™

EMERSON™

Data sheet

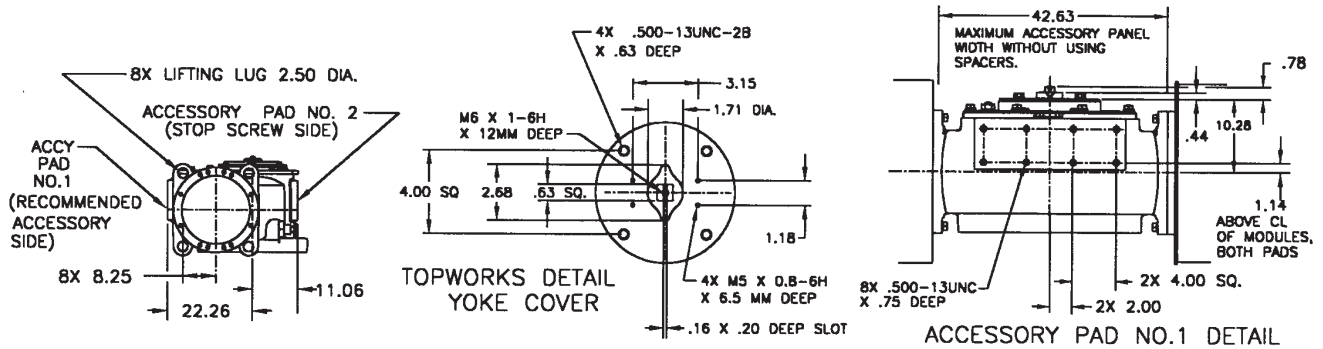
Sheet No.: GPI 3.32 Rev. C

Date: March 2017

G/GC-Series

Dimensions – (Pneumatic) In. G/GC-Series

Spring-Return Actuators
Lug/Accessory Details



Note: Not Certified dimensional drawings. Such drawings available on request.
Contact factory with correct model designation and serial number.
All dimensions are expressed in inches.

BETTIS[™]

Copyright © Emerson. The information in this document is subject to change without notice. Updated data sheets can be obtained from our website www.emerson.com/bettis or from your Emerson Automation Solutions - Actuation Technologies Center:
America's: +1 281 477 4100 Europe: +36 22 53 0950 Asia/Pacific: +65 67 77 8211


EMERSON[™]