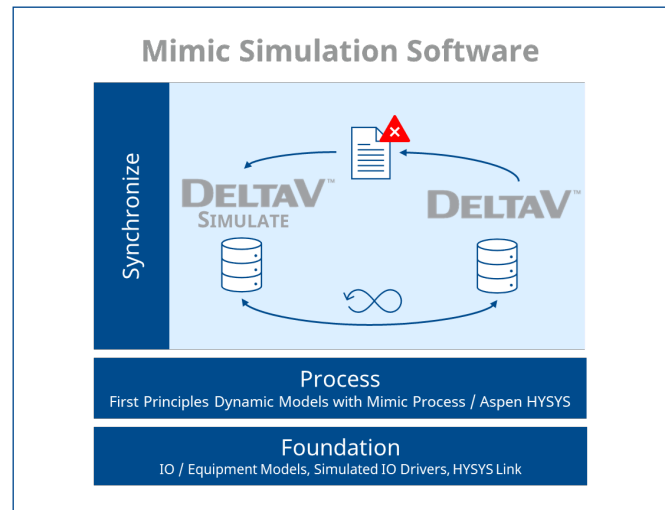


Mimic™ Synchronize

- Efficiently update DeltaV™ snapshots
- Perform rule-based verification of changes and updates
- Logging of every step and parameter processed for simplified MOC



Introduction

As part of the Mimic™ Simulation Software offering, Mimic Synchronize provides the tools needed to more easily maintain your Digital Twin with DeltaV™ and Mimic.

Mimic Synchronize allows DeltaV power users to keep DeltaV Simulate and production DeltaV systems aligned, ensuring the maximum return from your Multi-Purpose Dynamic Simulation (MPDS) system or Operator Training System (OTS).

Benefits

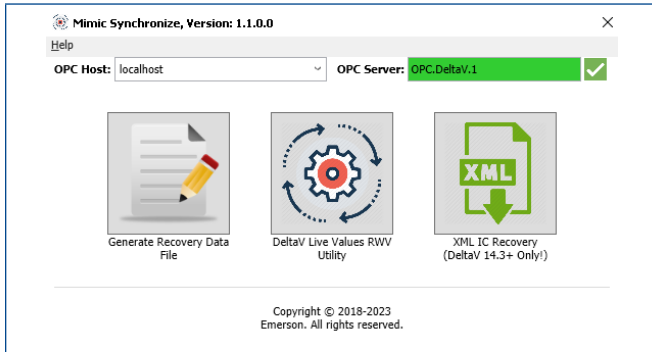
- **Efficiently update DeltaV snapshots** – Update your existing snapshots with the online control values that impact testing and training to save maintenance time and effort.
- **Perform rule-based verification of changes and updates** – Streamline virtual commissioning activities and automatically record the results for easy verification.
- **Logging of every step and parameter processed for simplified MOC** – As Mimic Synchronize updates snapshots, it creates a log of every step and parameter processed for simplified MOC.

Product Description

Mimic Synchronize minimizes the time and effort required to maintain your MPDS or OTS system by automating the steps required to align the production and DeltaV Simulate environments.

- The Range-Check Utility compares two FHX files and identifies and logs range changes.
- The Parameter Security-Check Utility is used to compare two FHX files and identify and log changes in security configuration. Using the Security-Check Utility can help the user identify control modules security changes which can affect their monitoring and control.
- The Quick-Check Utility uses user-defined rules and pass/fail-criteria to verify a saved system state against online values in the MPDS or OTS. Use rules to verify the same information on all data of one type, streamlining the verification process.
- To support a simple, comprehensive change management process of snapshots between the two systems, The XML IC Recovery Tool in Mimic Synchronize supports:
 - Comprehensive comparison of control module additions/deletions, structural changes, and offline parameter modifications in snapshot files.

- Optional skip or push of identified changes directly to the DeltaV Simulate snapshot files.
- Perform basic Save and Restore of DeltaV Snapshots.
- Pause/Resume DeltaV simulation nodes.



Mimic System Capacities and Requirements

- Operating Systems Supported – Microsoft Windows 10, Microsoft Windows Server 2016, 2019, 2022.
- Control Systems Supported – DeltaV v14.LTS with SimulatePro licensing and above.
- Mimic Synchronize must be installed on a DeltaV Application Station or DeltaV ProfessionalPLUS.
- Subscription Mimic Foundation license required.
- Mimic and Mimic Synchronize Product Support, delivered through Guardian required.
- Mimic Synchronize IS NOT DESIGNED, AND MAY NOT BE USED, FOR CONTROL PURPOSES.

Product Support

Mimic Synchronize Product Support is delivered through Guardian™. Guardian is Emerson’s digital platform for addressing the end-to-end lifecycle needs of automation & control software and asset performance management solutions. The Guardian digital experience enables users to quickly connect to product support; securely manage subscriptions; get intuitive views into system health; and explore additional software and services that propel performance.

Ordering Information

Mimic Synchronize is a subscription license that can be added to any subscription Mimic Foundation License. Contact your local Emerson Service Representative for more information or a quote for Emerson’s Mimic Synchronize.

Description	Model Number
Mimic Synchronize – 1 year subscription	MRL-3121
Mimic Synchronize Product Support, delivered through Guardian	MRL-3121-GS

©2023, Emerson. All rights reserved.

The Emerson logo is a trademark and service mark of Emerson Electric Co. All other marks are the property of their respective owners.

The contents of this publication are presented for informational purposes only, and while diligent efforts were made to ensure their accuracy, they are not to be construed as warranties or guarantees, express or implied, regarding the products or services described herein or their use or applicability. All sales are governed by our terms and conditions, which are available on request. We reserve the right to modify or improve the designs or specifications of our products at any time without notice.

Contact Us

 www.emerson.com/contactus

