

AMS Suite: Machinery Health™ Manager

Version 5.61



Copyright

© 2015 by Emerson Process Management. All rights reserved.

No part of this publication may be reproduced, transmitted, transcribed, stored in a retrieval system, or translated into any language in any form by any means without the written permission of Emerson.

Disclaimer

This manual is provided for informational purposes. EMERSON PROCESS MANAGEMENT MAKES NO WARRANTY OF ANY KIND WITH REGARD TO THIS MATERIAL, INCLUDING, BUT NOT LIMITED TO, THE IMPLIED WARRANTIES OF MERCHANTABILITY AND FITNESS FOR A PARTICULAR PURPOSE. Emerson Process Management shall not be liable for errors, omissions, or inconsistencies that may be contained herein or for incidental or consequential damages in connection with the furnishing, performance, or use of this material. Information in this document is subject to change without notice and does not represent a commitment on the part of Emerson Process Management. The information in this manual is not all-inclusive and cannot cover all unique situations.

Trademarks and Servicemarks

See [http://www2.emersonprocess.com/siteadmincenter/PM Central Web Documents/marks.pdf](http://www2.emersonprocess.com/siteadmincenter/PM%20Central%20Web%20Documents/marks.pdf)

All other marks are property of their respective owners.

Patents

The product(s) described in this manual are covered under existing and pending patents.

Contents

Getting started	4	Launch AMS Machinery Manager	12
Your computer hardware	6	What's next?	13
Install and register AMS Machinery Manager	10	Network installation overview	14

1 Getting started

Thank you for choosing AMS Machinery Manager. This guide provides the basics to get you started with a Standalone system. A Network system installation overview is provided on [page 14](#). Refer to the Installation Manual on the Manuals DVD for important instructions before installing the Network system. Let's get started!

Your AMS Machinery Manager package includes:

- Quick Start Guide
- Software Installation DVD
- Manuals DVD

Customized installation media

Based on your order, the Software Installation DVD contains the following:

- Standalone (Single User) or Network installation
- AMS Machinery Manager technologies
- Number of licensed users

To add a technology or more licensed users, contact your Emerson Process Management Sales Representative.

Where to get help

AMS Machinery Manager Help

Launch AMS Machinery Manager and select Help from the main menu.

AMS Machinery Manager Manuals DVD

Your AMS Machinery Manager package includes a disc with user manuals in PDF format.

Software Registration

- Phone:** Toll free 888.367.3774, option 2 (U.S. and Canada)
+63.2.702.1111 (Rest of world)
- Email:** wwcs.custserv@AP.EmersonProcess.com
- Web:** <http://www.mhm.assetweb.com/reg>

Product Support

Emerson provides a variety of ways to reach your Product Support team to get the answers you need when you need them:

- Phone** Toll free 800.833.8314 (U.S. and Canada)
+65.6770.8711 (Europe and Middle East)
+63.2.702.1111 (Asia Pacific)
- Email** mhm.custserv@emerson.com
- Web** <http://www.assetweb.com/mhm> and select **Product Support**

For additional contact information for specific countries, visit <http://www.SureService.com> and select **Technical Support and Customer Service**.

For Machinery Health experts in your area, visit <http://www.assetweb.com/mhm> and select **Contacts For Your Area**.

2 Your computer hardware

Your computer should meet hardware and operating system requirements for optimal installation and performance.

Important

If you intend to install Machine History Viewer or CSI Data Provider, you must install Internet Information Services before installing AMS Machinery Manager. The AMS Machinery Manager installation makes important changes to the IIS setup that you would otherwise have to configure manually with the assistance of Product Support. See the Installation Manual on the Manuals DVD for more details.

Servers

Minimum requirements		
Supported Operating Systems	Windows Server 2012 R2 Standard Edition ⁽¹⁾ , Windows Server 2012 R2 Datacenter ⁽¹⁾ , Windows Server 2008 SP2 Standard Edition ⁽¹⁾ , Windows Server 2008 R2 ⁽¹⁾ , or Windows Server 2003 R2 SP2	
Processor/ Memory	Portable Systems	1.83 GHz Dual Core or better, 2 GB of RAM or more
	Online Systems	Server-class 2.33 GHz Dual Core or better, 2 GB of RAM or more
Network	Ethernet (TCP/IP protocol)	
Browser	Internet Explorer 7 or later	
Screen Resolution	XGA (1024 x 768) or better	
Requirements for laptops used with CSI 2600 systems		
Supported Operating Systems	Windows 8.1 Professional ⁽¹⁾ , Windows 8 Pro ⁽¹⁾ , Windows 7 Professional SP1, Windows 7 Ultimate, or Windows 7 Enterprise	
Processor/Memory	1.5 GHz or better, 2 GB of RAM or more	
Hard drive capacity	250 GB or greater	
RS232	One available RS232 interface	
Network	Ethernet (TCP/IP protocol)	
Browser	Internet Explorer 7 or later	
Screen Resolution	XGA (1024 x 768) or better	
Additional recommendations		
Media	DVD drive required for installation	
Virtualization System	<ul style="list-style-type: none"> • Remote Desktop Services (Windows Server 2012, Windows Server 2008) • Terminal Server (Windows Server 2003) • Citrix XenApp 6.5 (Windows Server 2008) • Citrix XenApp 5.0 (Windows Server 2003) • VMware ESXi 5.5 (Windows Server 2012) • VMSphere 5.5 (Windows Server 2012) • Hyper-V (Microsoft System Center 2012 R2 Virtual Machine Manager) 	

Antivirus	<ul style="list-style-type: none"> • AVG® Network Security 2014 • Symantec™ Endpoint Protection 12.1 RU4 • McAfee™ All Access 2014 —Refer to Knowledge Base Article (KBA) NK-1400-0342 for antivirus configuration. • Trend Micro™ Premium Security — Refer to KBA AK-1400-0080 for antivirus configuration. • Norton 360 Version 2014 — Refer to KBA AK-1400-0079 for antivirus configuration.
-----------	--

- (1) Requires Microsoft .NET Framework 3.5 SP1, available from the Microsoft web site. Because AMS Machinery Manager does not require an Internet connection for installation, Emerson recommends installing .NET Framework 3.5 SP1 before AMS Machinery Manager.

Workstations

Minimum requirements	
Supported Operating Systems	Windows 8.1 Professional ⁽¹⁾ , Windows 8 Pro ⁽¹⁾ , Windows 7 Professional SP1, Windows 7 Ultimate, or Windows 7 Enterprise
Processor/Memory	1.5 GHz or better, 2 GB of RAM or more
Network	Ethernet (TCP/IP protocol)
Browser	Internet Explorer 7 or later
Screen Resolution	XGA (1024 x 768) or better
Communication requirements	
RS232	<ul style="list-style-type: none"> • For communications with analyzers prior to the CSI 2130 Machinery Health Analyzer, a PC must have an RS232 serial port, or use a serial-to-USB cable. • For communication with the Spectro 5200 Trivector™ Analyzer, a PC must have an RS232 serial port, or use a serial-to-USB cable.
USB	<ul style="list-style-type: none"> • A USB 2.0 port is required for communications with the CSI 2140 Machinery Health Analyzer and CSI 2130 Machinery Health Analyzer. • A USB 2.0 port is required for communication with the WDA Image Capture Kit.
Additional recommendations	
Media	DVD drive required for installation
Antivirus	<ul style="list-style-type: none"> • AVG® Network Security 2014 • Symantec™ Endpoint Protection 12.1 RU4 • McAfee™ All Access 2014 —Refer to Knowledge Base Article (KBA) NK-1400-0342 for antivirus configuration. • Trend Micro™ Premium Security — Refer to KBA AK-1400-0080 for antivirus configuration. • Norton 360 Version 2014 — Refer to KBA AK-1400-0079 for antivirus configuration.

- (1) Requires Microsoft .NET Framework 3.5 SP1, available from the Microsoft web site. Because AMS Machinery Manager does not require an Internet connection for installation, Emerson recommends installing .NET Framework 3.5 SP1 before AMS Machinery Manager.

Localization considerations

You may license AMS Machinery Manager software in English or a localized (translated) version. You must specify a language at the time you purchase your software licenses. Only the language you license will be on your software installation DVD. Follow these guidelines when preparing to install a localized version of AMS Machinery Manager.

Note

You may need to change your computer name before installing AMS Machinery Manager. A valid computer name can have numbers 0-9, uppercase and lowercase letters A-Z, and the hyphen (-). Special characters (<>; : " * + = \ | ? ,), accented characters, and other multibyte characters in a computer name can cause problems and interfere with a successful installation of AMS Machinery Manager software. Computer names cannot have only numbers, nor can they contain spaces.

Windows 7 Professional, Windows 7 Enterprise, Windows Server 2008, and Windows Server 2012

Recommendations for Windows without Multilingual User Interface (MUI) support, for example: Microsoft Windows 7 Professional, Windows 7 Enterprise, Windows Server 2008, and Windows Server 2012.

- Installing localized AMS Machinery Manager is supported on a Windows system of the same language with default regional settings. For example, install AMS Machinery Manager (German) on Windows (German).
- Installing localized AMS Machinery Manager on an English Windows system is not recommended. If you install localized AMS Machinery Manager on Windows (English), text may not display properly.
- When you upgrade AMS Machinery Manager, the language must match the currently installed AMS Machinery Manager language. For example, update AMS Machinery Manager v5.51 (German) to AMS Machinery Manager v5.6 (German). To change the AMS Machinery Manager language you need a full installation instead of an upgrade.
- Avoid changing Windows regional settings. Changes may cause unexpected behavior in AMS Machinery Manager.
- Installing English AMS Machinery Manager on a non-English Windows system is supported for Windows (Japanese) only.

AMS Machinery Manager language	Windows language edition	Windows regional settings	Supported
Localized version	Native language	Default (Native language)	Yes (preferred)
English	English	Default	Yes
Localized version	English	Default	Not recommended
English	Native language	Default (Native language)	Japanese only

AMS Machinery Manager language	Windows language edition	Windows regional settings	Supported
English	English	Changed to non-default, non-English	No

Windows 8.1, Windows 8, and Windows 7 Ultimate

Recommendations for Windows with Multilingual User Interface (MUI) support, for example: Microsoft Windows 8.1, Windows 8, and Windows 7 Ultimate.

- Installing localized AMS Machinery Manager on a Windows system where the matching language pack and regional settings have already been installed. For example, install AMS Machinery Manager (German) on Windows after installing the German language pack.
- When you upgrade AMS Machinery Manager, the language must match the currently installed AMS Machinery Manager language. For example, update AMS Machinery Manager v5.51 (German) to AMS Machinery Manager v5.6 (German). To change the AMS Machinery Manager language you need a full installation instead of an upgrade.
- One language of AMS Machinery Manager is available per installation. If you change your regional settings or language pack after installing AMS Machinery Manager, strings may not display properly. Use the regional settings and language pack that match the language you licensed for AMS Machinery Manager.

AMS Machinery Manager language	Windows language edition	Windows regional settings	Supported
Localized version	MUI with language pack	settings match language pack	Yes (preferred)
Localized version	MUI with language pack	English	No (translated strings may not display correctly)

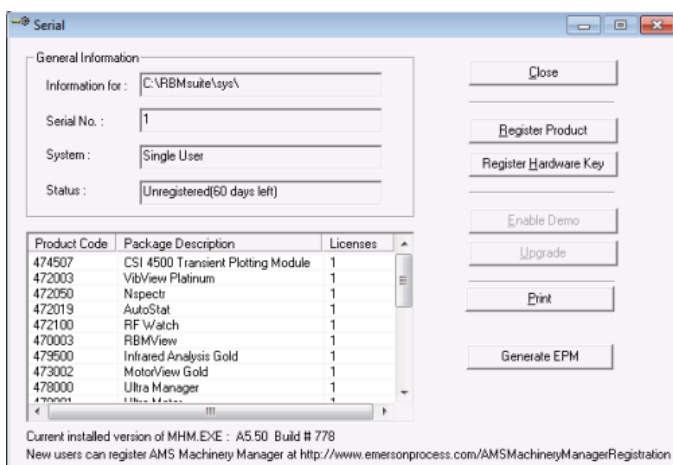
3 Install and register AMS Machinery Manager

1. Log on to the computer as a user with administrator rights.
2. Insert the AMS Machinery Manager Software Installation DVD and open it in Windows Explorer.
3. Run RBMsetup.exe.

Important

On Windows 7 and Windows Server 2008, right-click RBMsetup.exe and select Run as administrator. Click Cancel if the installation launches automatically when you insert the DVD. You must run the installation manually.

4. At the ATTENTION!! dialog, click Yes if you are installing the software for the first time. If you are upgrading your software, this is a reminder to stop the installation and back up your database first. Click No to stop the installation.
5. The setup program verifies that your system meets the minimum requirements. If they are met, the Options page dialog appears. If they are not met, a message displays more information. Update the computer to meet the requirements or contact Product Support.
6. Click Install to start the installation.
7. If you are using Windows Firewall, grant access to programs published by Emerson Process Management when prompted.
8. When the Serial dialog appears, click Register Product to register the software now, or click Close to skip registration.



Note

To register later, open Windows Explorer, go to C:\RBMSuite\sys and double-click Serial.exe.

- a. In the Serial dialog, click Register Product.

The Register Product dialog appears. You need the Serial No. and Request No. during registration.

- b. Contact Product Support to register.

Phone: Toll free 888.367.3774, option 2 (U.S. and Canada)
+63.2.702.1111 (Rest of world)

Email: wcs.custserv@AP.EmersonProcess.com

Web: <http://www.mhm.assetweb.com/reg>

- c. Enter the Response code given to you by a Product Support representative.
- d. Click OK.

The Register Product dialog closes.

- e. In the Serial dialog, verify the Status is "Registered."
- f. Click Close.

Your software is registered.

- 9. On the Finish page, click Finish to complete the installation.

If the computer requires a reboot, Restart Now is selected on the Finish page. Allow the system to reboot before attempting to run the software.

4 Launch AMS Machinery Manager

Now that you have installed and registered AMS Machinery Manager, you are ready to launch AMS Machinery Manager.

1. Go to Start > Programs (All Programs) > AMS Machinery Manager.
2. Select AMS Machinery Manager.
3. Log in when prompted.
 - a. Initially, Administrator is the default user. Leave the password blank and click OK.
 - b. If you use a different user, enter the username and password and click OK.

See the Administration topics in AMS Machinery Manager Help to set the Administrator password and create a new user.

Congratulations! You are now running AMS Machinery Manager.

5 What's next?

New installations

If you are new to AMS Machinery Manager, here is what you can do next:

- Create a new username and password in RBM Network Administration.

Log in to AMS Machinery Manager as Administrator and go to Tools > Setup/Communication > RBM Network Administration.

- Add the Example.rbm database and start exploring AMS Machinery Manager features.

Select File > Add/Remove Database. Click Example.rbm and click Add.

- View periodic vibration data in the example database.

In Vibration Analysis, expand the Example.rbm database in Navigator - Vibration Analysis. Click points in the database to view example vibration data.

- Create an example route.

In Navigator - Vibration Analysis, right-click an area in the example database and select Create Route.

- Load a route to a CSI Machinery Health Analyzer in the Data Transfer tab.
- Run reports on areas and equipment in the example database in the Reporting tab.
- Create your own database using RBMwizard.

In the Tools tab, select Setup/Communication and launch RBMwizard.

Select Help from the menu for more information.

Upgrade installations

- AMS Machinery Manager prompts you to reindex a database when you open a database for the first time after an upgrade. Allow AMS Machinery Manager to perform this one-time procedure so you can use your database.
- In RBM Network Administration, select User > Update Permissions after a version upgrade to make new capabilities available to existing users.

Select Help from the menu for more information.

6 Network installation overview

Important

- If you intend to install Machine History Viewer or CSI Data Provider, you must install Internet Information Services before installing AMS Machinery Manager. The AMS Machinery Manager installation makes important changes to the IIS setup that you would otherwise have to configure manually with the assistance of Product Support. See the Installation Manual on the Manuals DVD for more details.
 - If you are upgrading your software, back up your database before completing the software update. Your databases require reindexing to work with the new software. If you need to reinstall the previous version of software, be aware that any database you open with the new software will be reindexed and will no longer work with any previous version.
-

Ensure each computer meets the minimum system operating requirements.

1. Install the Network Server on the server first.
2. Install the AMS Machinery Manager Client on a workstation.
3. Install secondary servers and clients on other computers on the network.

You can install Online Server, Secondary Database Server, Data Import Server, Data Import Client, and AMS Machinery Manager Client on other computers in the network.

- Configure service accounts and firewall settings for each computer, if necessary.

See the Installation Manual on the Manuals DVD for more details.

- Network installations require further configuration for each CSI Machinery Health Monitor.

For more information, open Help in AMS Machinery Manager and choose Administration > Online Server.

Emerson Process Management
Machinery Health Management
835 Innovation Drive
Knoxville, TN 37932 USA
T +1 865-675-2400
F +1 865-218-1401
www.EmersonProcess.com

©2015, Emerson Process Management
The contents of this publication are presented for informational purposes only, and while every effort has been made to ensure their accuracy, they are not to be construed as warranties or guarantees, express or implied, regarding the products or services described herein or their use or applicability. All sales are governed by our terms and conditions, which are available on request. We reserve the right to modify or improve the designs or specifications of our products at any time without notice.

All rights reserved. The Emerson logo is a trademark and service mark of Emerson Electric Co. All other marks are property of their respective owners.