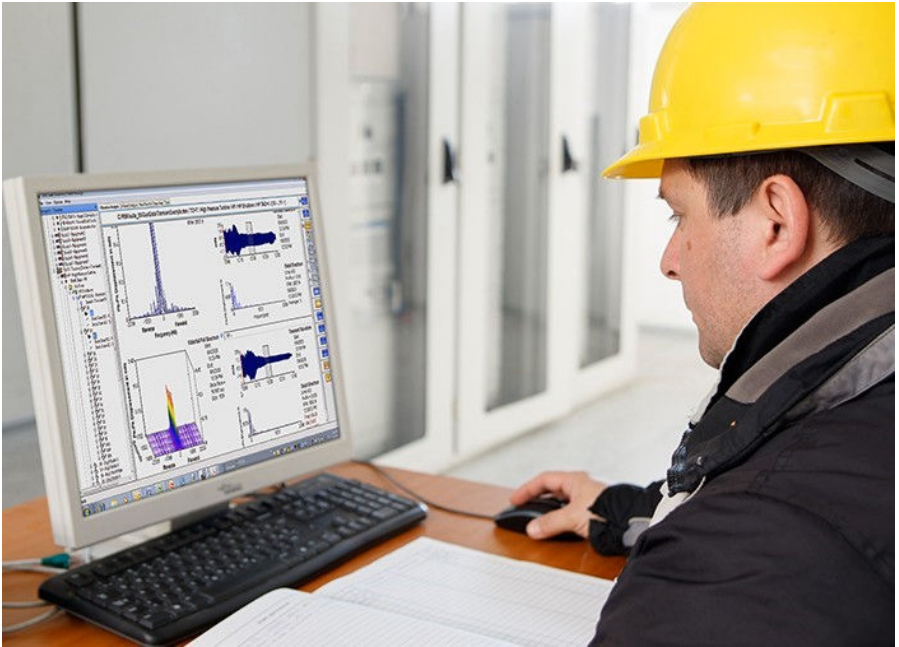


# AMS Machinery Manager

Version 6.33



**Copyright**

© 2024 by Emerson. All rights reserved.

No part of this publication may be reproduced, transmitted, transcribed, stored in a retrieval system, or translated into any language in any form by any means without the written permission of Emerson.

**Disclaimer**

This manual is provided for informational purposes. EMERSON MAKES NO WARRANTY OF ANY KIND WITH REGARD TO THIS MATERIAL, INCLUDING, BUT NOT LIMITED TO, THE IMPLIED WARRANTIES OF MERCHANTABILITY AND FITNESS FOR A PARTICULAR PURPOSE. Emerson shall not be liable for errors, omissions, or inconsistencies that may be contained herein or for incidental or consequential damages in connection with the furnishing, performance, or use of this material. Information in this document is subject to change without notice and does not represent a commitment on the part of Emerson. The information in this manual is not all-inclusive and cannot cover all unique situations.

**Patents**

The product(s) described in this manual are covered under existing and pending patents.

---

**Contents**

Getting started.....	3	Launch AMS Machinery Manager.....	11
Your computer hardware.....	4	What's next?.....	12
Install and register AMS Machinery Manager....	9	Physical network installation overview.....	13
		Cloud installation overview.....	14

# 1 Getting started

This guide provides the basics to get you started with a standalone system. For network system installations, see [Physical network installation overview](#). Refer to the Installation Guide for important instructions before installing the Network system.

## 1.1 Where to get help

### AMS Machinery Manager Help

Launch AMS Machinery Manager and select **Help** from the main menu. The Help is also available on the Guardian website.

### Software Registration

**Phone:** Toll free 888.367.3774, option 2 (U.S. and Canada)  
+63.2.702.1111 (Rest of world)

**Email:** [wwcs.custserv@emerson.com](mailto:wwcs.custserv@emerson.com)

**Web:** <https://go.emersonautomation.com/AMSMachineryManagerReg>

### Product Support

Emerson provides a variety of ways to reach your Product Support team to get the answers you need when you need them:

**Phone** Toll free 800.833.8314 (U.S. and Canada)  
+1.512.832.3774 (Latin America)  
+63.2 702.1111 (Asia Pacific, Europe, and Middle East)

**Email** [Guardian.GSC@Emerson.com](mailto:Guardian.GSC@Emerson.com)

**Web** <http://www.emerson.com/en-us/contact-us>

To search for documentation on AMS Machinery Manager, visit <https://www.emerson.com/en-us/catalog/ams-ams-machinery-manager>.

To view toll free numbers for specific countries, visit <http://www.emerson.com/technicalsupport>.

## 2 Your computer hardware

Your computer should meet hardware and operating system requirements for optimal installation and performance.

### Note

If you intend to install CSI Data Provider, you must install Internet Information Services before installing AMS Machinery Manager. The AMS Machinery Manager installation makes important changes to the IIS setup that you would otherwise have to configure manually with the assistance of Product Support.

See the Installation Guide for details.

### 2.1 Servers

Requirements	
Supported Operating Systems	Windows Server 2022 Standard, Windows Server 2022 Datacenter, Windows Server 2019 Standard, Windows Server 2019 Datacenter, Windows Server 2016 Standard, Windows Server 2016 Datacenter
Processor/Memory	2.4 GHz 4-core processor or faster, 8 GB of RAM (minimum)
Network	Ethernet (TCP/IP protocol)
Screen Resolution	Minimum: SXGA (1024 x 768) Maximum: 4K UHD (3840 x 2160) — Refer to KBA NK-1800-0272 for display configuration

Requirements for servers used with AMS 6500 transient systems	
Supported Operating Systems	Windows Server 2019 Standard, Windows Server 2019 Datacenter, Windows Server 2016 Standard, Windows Server 2016 Datacenter
Processor/Memory	2.4 GHz 4-core processor or faster, 8 GB of RAM (minimum)
Network	Ethernet (TCP/IP protocol)
Screen Resolution	Minimum: SXGA (1024 x 768) Maximum: 4K UHD (3840 x 2160) — Refer to KBA NK-1800-0272 for display configuration

<b>Requirements for laptops used with AMS 2600 systems</b>	
Supported Operating Systems	Windows 11 Professional, Windows 11 Enterprise, Windows 10 Professional x64, Windows 10 Enterprise x64, Windows 10 Enterprise LTSB
Processor/Memory	2.4 GHz 4-core processor or faster, 8 GB of RAM (minimum)
Hard drive	SAS hard drive (10,000 RPM)
Hard drive available space	300 GB (minimum)
Network	Ethernet (TCP/IP protocol)
Screen Resolution	Minimum: SXGA (1024 x 768) Maximum: 4K UHD (3840 x 2160) — Refer to KBA NK-1800-0272 for display configuration.

<b>Additional recommendations<sup>1</sup></b>	
Browser	Microsoft Edge
Virtualization System (minimum version)	<ul style="list-style-type: none"> <li>• Citrix XenApp 7.9</li> <li>• VMware ESXi 6.0</li> <li>• Hyper-V</li> <li>• Remote Desktop Services</li> </ul>
Cloud computing service	Microsoft Azure — Refer to KBA NK-1900-0557 for proper deployment.
Antivirus (minimum version) <sup>2</sup>	<ul style="list-style-type: none"> <li>• McAfee™ Endpoint Security 10.1</li> <li>• Norton Security Version 22.7</li> <li>• Symantec™ Endpoint Protection 12.1.6</li> <li>• CrowdStrike</li> </ul>

<sup>1</sup> AMS Machinery Manager has been tested to work with the programs on the list. If you use other programs, issues may be encountered when running the software.

<sup>2</sup> Refer to KBA NK-2200-0098 for anti-virus configuration.

## 2.2 Workstations

Requirements	
Supported Operating Systems	Windows 11 Professional, Windows 11 Enterprise, Windows 10 Professional x64, Windows 10 Enterprise x64, Windows 10 Enterprise LTSB
Processor/Memory	2.2 GHz 4-core processor or faster, 4 GB of RAM (minimum)
Hard drive	SAS hard drive (10,000 RPM)
Hard drive available space	100 GB (minimum)
Network	Ethernet (TCP/IP protocol)
Browser	Microsoft Edge
Screen Resolution	Minimum: SXGA (1024 x 768) Maximum: 4K UHD (3840 x 2160 pixels) — Refer to Knowledge Base Article (KBA) NK-1800-0272 for display configuration.

Communication requirements	
USB	A USB 2.0 port is required for communications with an AMS 2140 Machinery Health Analyzer.  A USB 2.0 port is required for communications with a WDA Image Capture Kit.

Additional recommendations <sup>1</sup>	
Antivirus (minimum version) <sup>2</sup>	<ul style="list-style-type: none"> <li>• McAfee™ Endpoint Security 10.1</li> <li>• Norton Security Version 22.7</li> <li>• Symantec™ Endpoint Protection 12.1.6</li> <li>• CrowdStrike</li> </ul>

<sup>1</sup> AMS Machinery Manager has been tested to work with the programs on the list. If you use other programs, issues may be encountered when running the software.

<sup>2</sup> Refer to KBA NK-2200-0098 for anti-virus configuration.

## 2.3 Localization considerations

You may license AMS Machinery Manager software in English or a localized (translated) version. You must specify a language at the time you purchase

your software licenses. Only the language you license will be in your software installation package. Follow these guidelines when preparing to install a localized version of AMS Machinery Manager.

### Note

You may need to change your computer name before installing AMS Machinery Manager. A valid computer name can have numbers 0-9, uppercase and lowercase letters A-Z, and the hyphen (-). Special characters (<> ; : " \* + = \ | ? ,), accented characters, and other multibyte characters in a computer name can cause problems and interfere with a successful installation of AMS Machinery Manager software. Computer names cannot have only numbers, nor can they contain spaces.

### Recommendations for Windows without Multilingual User Interface (MUI) support

- Installing localized AMS Machinery Manager is supported on a Windows system of the same language with default regional settings. For example, install AMS Machinery Manager (German) on Windows (German).
- Installing localized AMS Machinery Manager on an English Windows system is not recommended. If you install localized AMS Machinery Manager on Windows (English), text may not display properly.
- When you upgrade AMS Machinery Manager, the language must match the currently installed AMS Machinery Manager language. For example, update AMS Machinery Manager v5.7 (German) to AMS Machinery Manager v5.71 (German). To change the AMS Machinery Manager language you need a full installation instead of an upgrade.
- Avoid changing Windows regional settings. Changes may cause unexpected behavior in AMS Machinery Manager.
- Installing English AMS Machinery Manager on a non-English Windows system is supported for Windows (Japanese) only.

AMS Machinery Manager language	Windows language edition	Windows regional settings	Supported
Localized version	Native language	Default (Native language)	Yes (preferred)
English	English	Default	Yes
Localized version	English	Default	Not recommended
English	Native language	Default (Native language)	Japanese only

AMS Machinery Manager language	Windows language edition	Windows regional settings	Supported
English	English	Changed to non-default, non-English	No

### Recommendations for Windows with Multilingual User Interface (MUI) support

- Installing localized AMS Machinery Manager on a Windows system where the matching language pack and regional settings have already been installed. For example, install AMS Machinery Manager (German) on Windows after installing the German language pack.
- When you upgrade AMS Machinery Manager, the language must match the currently installed AMS Machinery Manager language. For example, update AMS Machinery Manager v5.7 (German) to AMS Machinery Manager v5.71 (German). To change the AMS Machinery Manager language you need a full installation instead of an upgrade.
- One language of AMS Machinery Manager is available per installation. If you change your regional settings or language pack after installing AMS Machinery Manager, strings may not display properly. Use the regional settings and language pack that match the language you licensed for AMS Machinery Manager.

AMS Machinery Manager language	Windows language edition	Windows regional settings	Supported
Localized version	MUI with language pack	settings match language pack	Yes (preferred)
Localized version	MUI with language pack	English	No (translated strings may not display correctly)



### 3 Install and register AMS Machinery Manager

Verify the client computer meets the operating requirements for a workstation.

#### Procedure

1. Log on to the computer as a user with administrator rights.
2. Mount the installation file.
3. Run **RBMsetup.exe**.

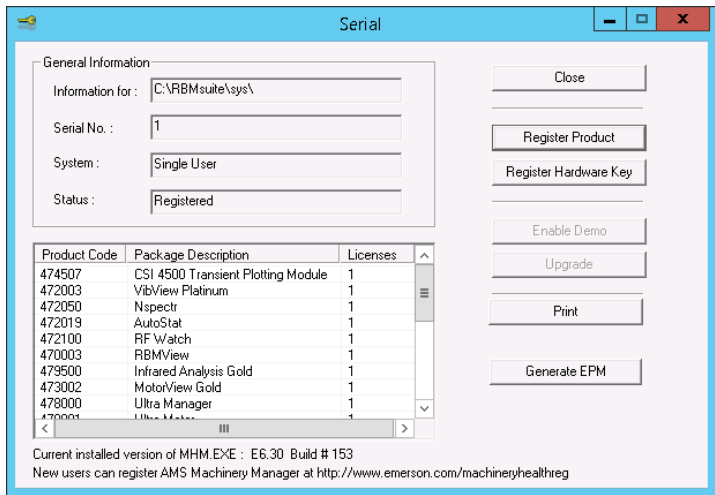
---

#### Note

On Windows 7, right-click **RBMsetup.exe** and select **Run as administrator**. Click **Cancel** if the installation launches automatically when you mount the installation file. You must run the installation manually.

---

4. At the **ATTENTION!!** dialog, click **Yes** if you are installing the software for the first time. If you are upgrading your software, this is a reminder to stop the installation and back up your database first. Click **No** to stop the installation.
5. The setup program verifies that your system meets the minimum requirements. If they are met, the **Options** page dialog appears. If they are not met, a message displays more information. Update the computer to meet the requirements or contact Product Support.
6. Click **Install** to start the installation.
7. If you are using Windows Firewall, grant access to programs published by Emerson when prompted.
8. When the **Serial** dialog appears, click **Register Product** to register the software now, or click **Close** to skip registration.



### Note

To register later, open Windows Explorer, go to C:\RBMsuite\sys and then **double-click Serial.exe**.

- a. In the Serial dialog, click **Register Product**.  
The Register Product dialog appears. You need the Serial No. and Request No. during registration.
  - b. Contact Product Support to register. See [Where to get help](#) for the contact information.
  - c. Enter the `Response` code given to you by a Product Support representative.
  - d. Click **OK**.
  - e. In the Serial dialog, verify that the Status is "Registered."
  - f. Click **Close**.  
Your software is registered.
9. Click **Finish** to complete the installation.
- If the computer requires a reboot, `Restart Now` is selected on the Finish page. Allow the system to reboot before attempting to run the software.

## 4 Launch AMS Machinery Manager

Now that you have installed and registered AMS Machinery Manager, you are ready to launch AMS Machinery Manager.

### Procedure

1. Go to **Start > All Programs > AMS Machinery Manager**.
2. Select **AMS Machinery Manager**.
3. Log in when prompted.
  - a. Initially, Administrator is the default user. Leave the password blank and click **OK**. When prompted, set the password for Administrator user. A password is required for all users.
  - b. When prompted, set the password for Administrator user. A password is required for all users.
  - c. If you use a different user, enter the username and password and click **OK**.

---

### Note

See the Administration topics in AMS Machinery Manager Help to set the Administrator password and create a new user.

---

## 5 What's next?

### 5.1 New installations

If you are new to AMS Machinery Manager, here is what you can do next:

- Create a new username and password in RBM Network Administration. Log in to AMS Machinery Manager as Administrator and go to **Tools > Setup/ Communication > RBM Network Administration**.
- Add the Example.rbm database and start exploring AMS Machinery Manager features.  
Select **File > Add/Remove Database**. Click **Example.rbm** and click **Add**.
- View periodic vibration data in the example database.  
In Vibration Analysis, expand the Example.rbm database in Navigator - Vibration Analysis. Click points in the database to view example vibration data.
- Create an example route.  
In Navigator - Vibration Analysis, right-click an area in the example database and select **Create Route**.
- Load a route to a Machinery Health Analyzer in the Data Transfer tab.
- Run reports on areas and equipment in the example database in the Reporting tab.
- Create your own database using RBMwizard.  
In the Tools tab, select **Setup/Communication** and launch **RBMwizard**.

Select **Help** from the menu for more information.

### 5.2 Upgrade installations

- When upgrading to v6.3, you will need to update the schema of databases that were created prior to v6.3. Run the database schema converter tool to convert databases. Emerson recommends copying the Extras\5.x DB Schema Converter folder from the installation media to your computer. See the Installation Guide for details.
- AMS Machinery Manager prompts you to reindex a database when you open a database for the first time after an upgrade. Allow AMS Machinery Manager to perform this one-time procedure so you can use your database.
- In RBM Network Administration, select **User > Update Permissions** after a version upgrade to make new capabilities available to existing users.

Select **Help** from the menu for more information.

## 6 Physical network installation overview

### Procedure

1. Install the Network Server on the server first.
2. Install the AMS Machinery Manager Client on a workstation.
3. Install secondary servers and clients on other computers on the network.

You can install Online Server, Secondary Database Server, Data Import Server, Data Import Client, and AMS Machinery Manager Client on other computers in the network.

- Configure service accounts and firewall settings for each computer, if necessary.  
See the Installation Guide for details.
- Network installations require further configuration for each Machinery Health Monitor.  
For more information, open Help in AMS Machinery Manager and choose **Administration > Online Server**.

## 7 Cloud installation overview

Cloud installation is only supported for AMS 2140 use cases, involving dumping and storing of routes. AMS Machinery Manager server and clients must be hosted in the cloud environment. Other configurations are not supported and are not recommended. See the Installation Guide and KBA NK-1900-0557 for details.

Ensure the virtual host meets the minimum system requirements for a server installation.

### Procedure

1. Configure the virtual host.  
Configuration of the virtual host varies per organization. Coordinate with your IT department for information in configuring your virtual network.
2. Install the Network Server on the virtual host.  
Only include in the installation the AMS Machinery Manager Network Server, Client, and the Dashboard.
3. Enable secure connection between AMS Machinery Manager and AMS 2140 devices.
4. Emerson recommends complying with CIS (Center for Internet Security) Benchmarks specific to the operating system of your virtual host.  
This is an added security recommendation for machines that are in the cloud and/or exposed to the Internet. Consult with your IT department for more information.
5. Configure the virtual host and AMS 2140 for connection.



**Emerson**

835 Innovation Drive  
Knoxville, TN 37932 USA  
T +1 865-675-2400  
F +1 865-218-1401  
[www.Emerson.com](http://www.Emerson.com)

©2024, Emerson.

The contents of this publication are presented for informational purposes only, and while every effort has been made to ensure their accuracy, they are not to be construed as warranties or guarantees, express or implied, regarding the products or services described herein or their use or applicability. All sales are governed by our terms and conditions, which are available on request. We reserve the right to modify or improve the designs or specifications of our products at any time without notice.

All rights reserved. AMS is a mark of one of the Emerson group of companies. The Emerson logo is a trademark and service mark of Emerson Electric Co. All other marks are the property of their respective owners.

