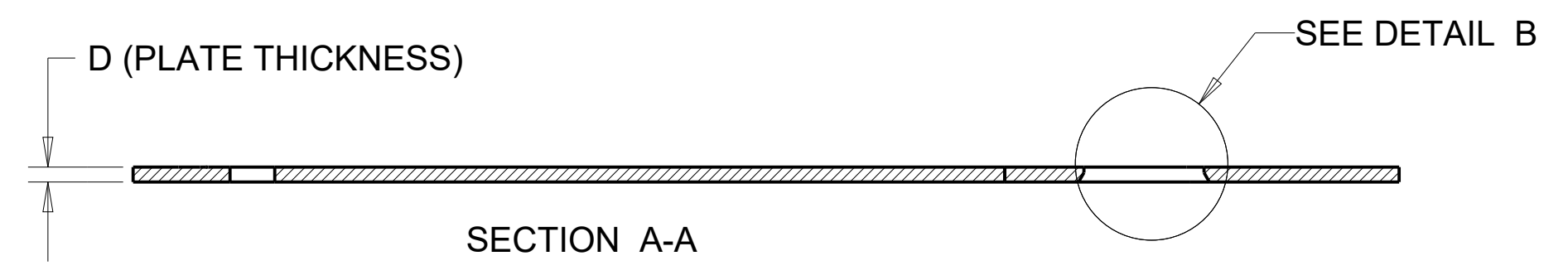
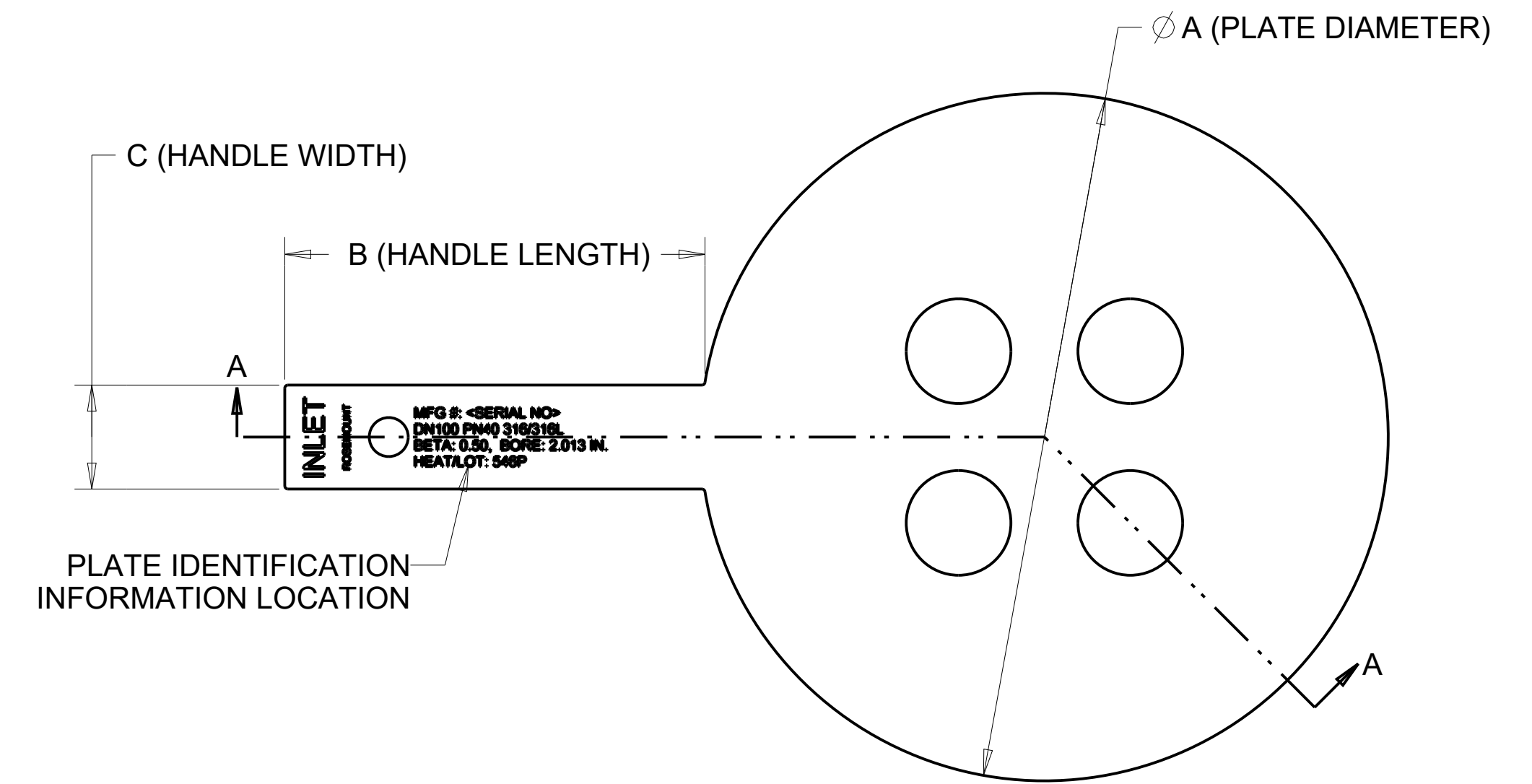
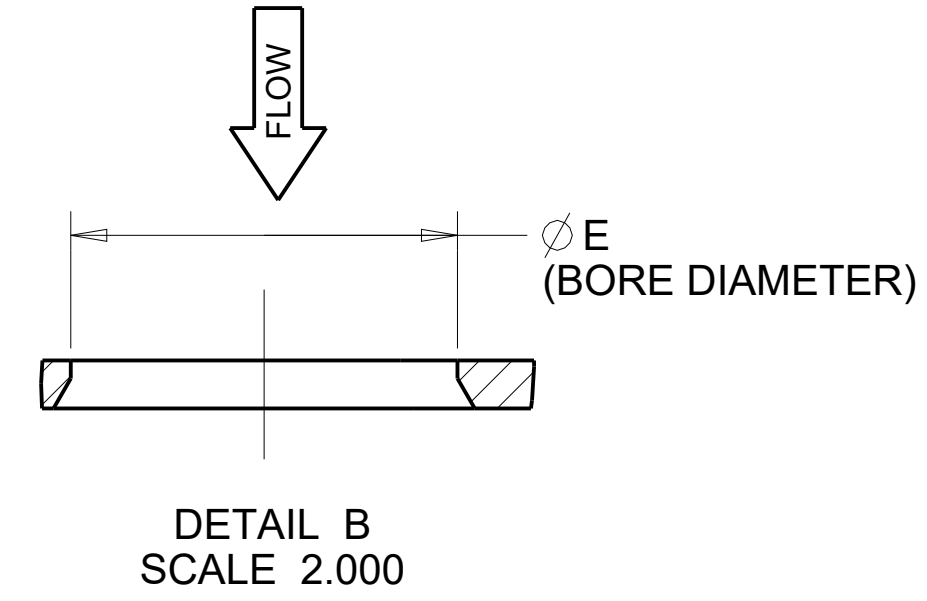


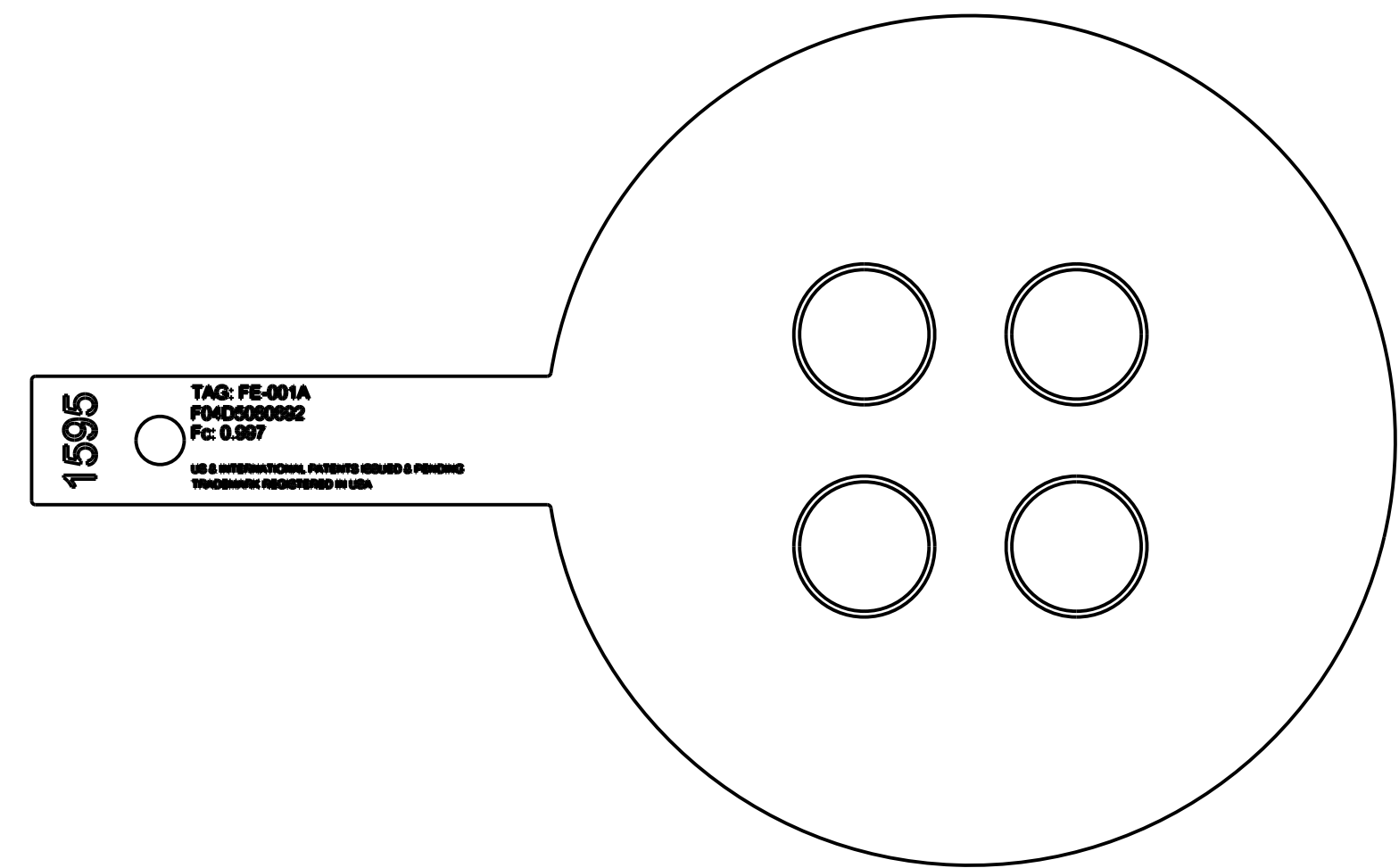
REVISION TABLE			
REVISION	ECO NO.	APP'D	DATE
AF	DS11056119	NK	06/05/20
DESCRIPTION			
Corrected "D" dim for DN50-DN100 to .125" and .25" for DN150-DN300.			

- NOTES:
- ROSEMOUNT INC. CERTIFIES THIS DRAWING IS IN ACCORDANCE WITH ROSEMOUNT ENGINEERING SPECIFICATIONS AND ACCURATELY REPRESENTS THE EQUIPMENT FURNISHED.
 - FOR ACTUAL RECOMMENDED LOCATION AND ORIENTATION OF ORIFICE PLATES REFER TO INSTALLATION MANUAL 00809-0100-4828.
 - FOR MODEL SELECTIONS AND OPTIONS REFER TO ROSEMOUNT PRODUCT DATA SHEET 00813-0100-4828.
 - MODEL 1595 MAXIMUM TEMPERATURE IS 1200° F (648° C) FOR 316 AND ALLOY C-276, AND 900° F (482° C) FOR ALLOY 400. OBSERVE GASKET MATERIAL LIMITATIONS.
 - AVAILABLE MATERIALS: 316 STAINLESS STEEL, ALLOY 400 AND ALLOY C-276.
 - DELETED



MATERIAL	PRESSURE @ AMBIENT	PRESSURE @ MAX TEMP	MDMT	PRESSURE CLASS	DESIGN CODE
ASTM A240 GR 316/316L SS	1450 PSIG (100 BAR-G)	1450 PSIG @ 1200° F (100 BAR-G @ 648° C)	-325° F (-198° C)	EN-1092-1 PN10 - PN100	ASME B31.3
ASTM B575 GR N10276 (ALLOY C276)					
ASTM B127 GR N04400 (ALLOY 400)		1450 PSIG @ 900° F (100 BAR-G @ 482° C)			

LINE SIZE	PLATE DIAMETER Ø A (BY EN-1092-1 FLANGE RATING (PN))						HANDLE LENGTH B	HANDLE WIDTH C	PLATE THICKNESS D	BORE DIAMETER Ø E				
	PN 10	PN 16	PN 25	PN 40	PN 63/64	PN 100				.20 BETA	.40 BETA	.50 BETA	.60 BETA	.65 BETA
NPS 2 (DN50)	4.213 [107,0]						4.00 [101,6]	1.00 [25,4]	.125 [3,2]	.207 [5,3]	.413 [10,5]	.517 [13,1]	.620 [15,8]	N/A
NPS 3 (DN80)	5.591 [142,0]									.307 [7,8]	.614 [15,6]	.767 [19,5]	.997 [25,3]	
NPS 4 (DN100)	6.378 [162,0]		6.614 [168,0]		6.850 [174,0]	7.087 [180,0]				.403 [10,2]	.805 [20,5]	1.007 [25,6]	1.309 [33,3]	
NPS 6 (DN150)	8.583 [218,0]		8.819 [224,0]		9.724 [247,0]	10.118 [257,0]				.607 [15,4]	1.213 [30,8]	1.516 [38,5]	1.971 [50,1]	
NPS 8 (DN200)	10.748 [273,0]		11.181 [284,0]		11.417 [290,0]	12.165 [309,0]	12.756 [324,0]	.250 [6,4]	.798 [20,3]	1.596 [40,5]	1.995 [50,7]	2.549 [65,9]		
NPS 10 (DN250)	12.913 [328,0]	12.953 [329,0]	13.386 [340,0]	13.858 [352,0]	14.331 [364,0]	15.394 [391,0]	1.002 [25,5]		2.004 [50,9]	2.505 [63,6]	3.257 [82,7]			
NPS 12 (DN300)	14.882 [378,0]	15.118 [384,0]	15.748 [400,0]	16.417 [417,0]	16.693 [424,0]	18.031 [458,0]	1.200 [30,5]		2.400 [61,0]	3.000 [76,2]	N/A	3.900 [99,1]		
NPS 14 (DN350)	17.244 [438,0]	17.480 [444,0]	17.992 [457,0]	18.661 [474,0]	19.134 [486,0]	20.157 [512,0]	1.312 [33,3]		2.625 [66,7]	3.281 [83,3]	4.265 [108,3]			
NPS 16 (DN400)	19.252 [489,0]	19.488 [495,0]	20.236 [514,0]	21.496 [546,0]	21.378 [543,0]	22.520 [572,0]	6.00 [152,4]	1.50 [38,1]	.375 [9,5]	1.500 [38,1]	3.000 [76,2]	3.750 [95,3]	4.875 [123,8]	
NPS 18 (DN450)	21.220 [539,0]	21.850 [555,0]	N/A	22.480 [571,0]	N/A					1.688 [42,9]	3.375 [85,7]	4.219 [107,2]	5.485 [139,3]	
NPS 20 (DN500)	23.386 [594,0]	24.291 [617,0]	24.567 [624,0]	24.724 [628,0]	25.866 [657,0]	27.717 [704,0]				1.881 [47,8]	3.762 [95,6]	4.703 [119,5]	6.114 [155,3]	
NPS 24 (DN600)	27.362 [695,0]	28.898 [734,0]	28.780 [731,0]	29.409 [747,0]	30.079 [764,0]	32.008 [813,0]				.500 [12,7]	2.262 [57,5]	4.525 [114,9]	5.656 [143,7]	7.353 [186,8]



©2015 ROSEMOUNT INC. ROSEMOUNT INC. CERTIFIES THIS DRAWING IS IN ACCORDANCE WITH ROSEMOUNT ENGINEERING SPECIFICATIONS. UNIT NOTES IN INCHES (mm). REFERENCE ROSEMOUNT PRODUCT SPECIFICATIONS. CAD MAINTAINED. (PRO/E)

3RD ANGLE

EMERSON

TITLE: ROSEMOUNT 1595PxxxDx TYPE I DRAWING

DR. J.RUMSEY 01/03/12 DRAWING NO. 01595-1004

APP'D D.VERHAAGEN 01/03/12

SHEET 1 OF 1