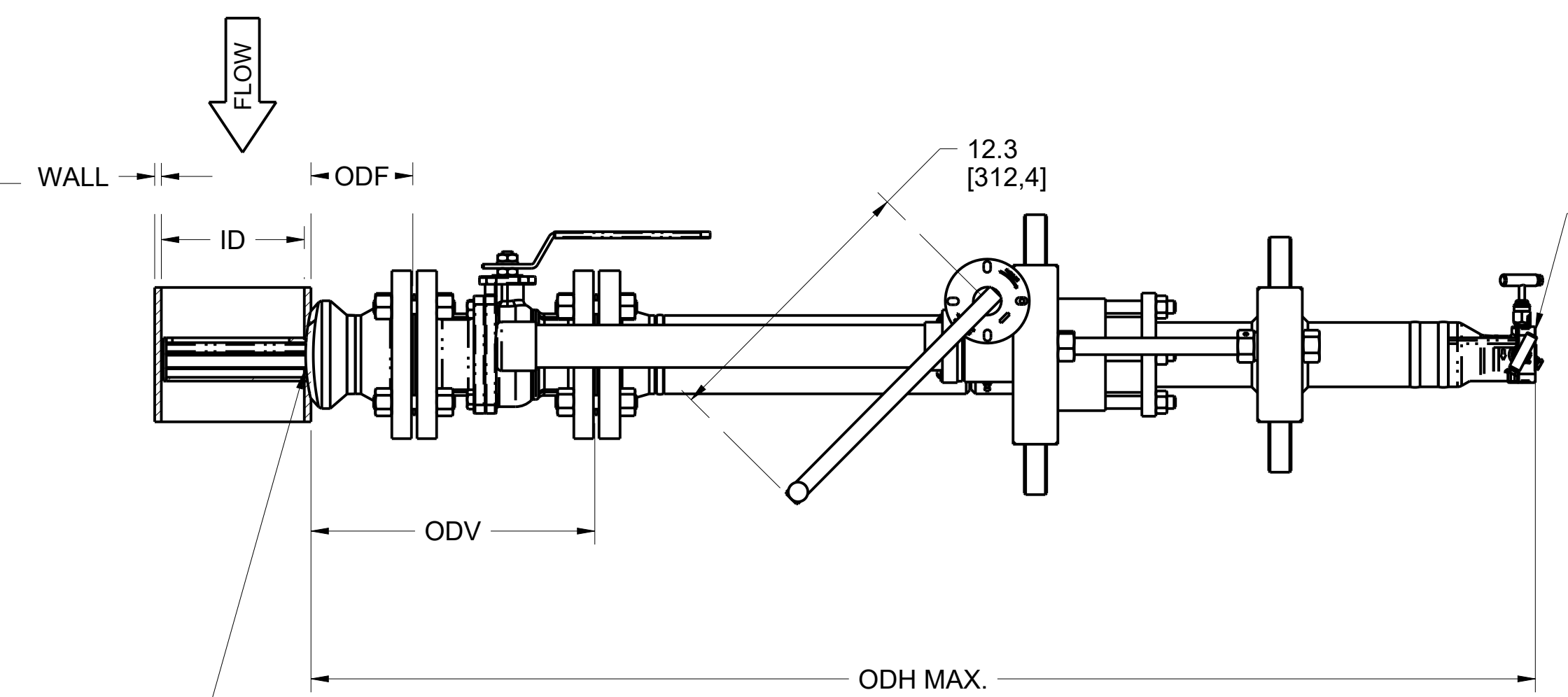
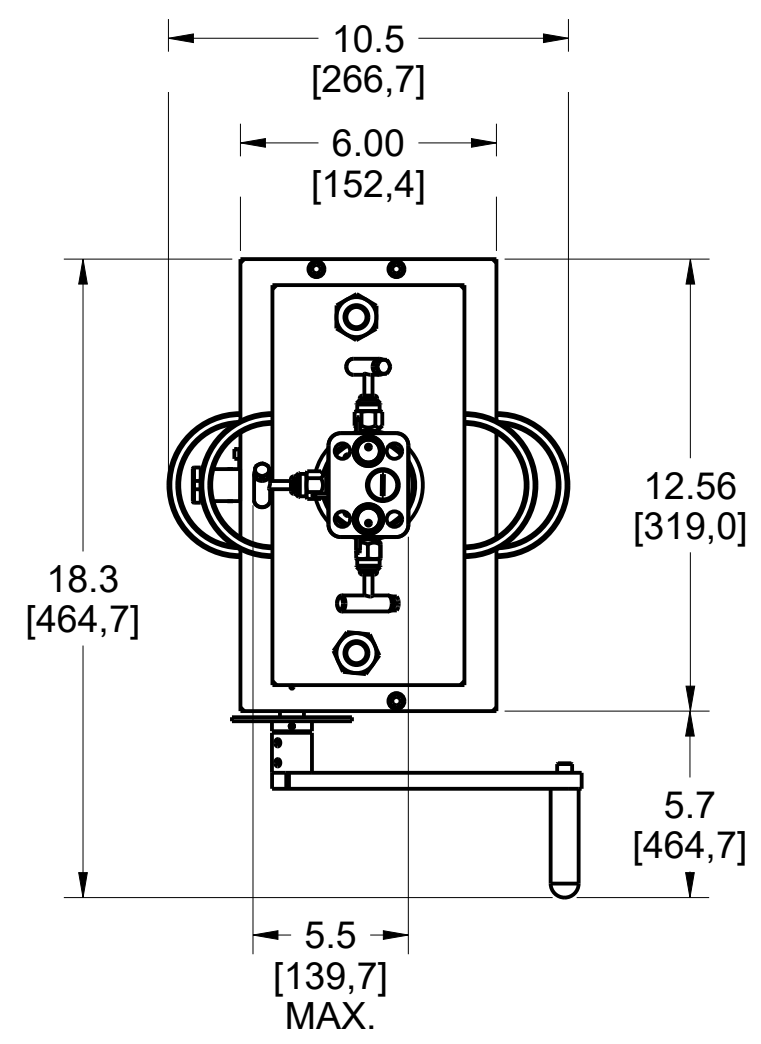
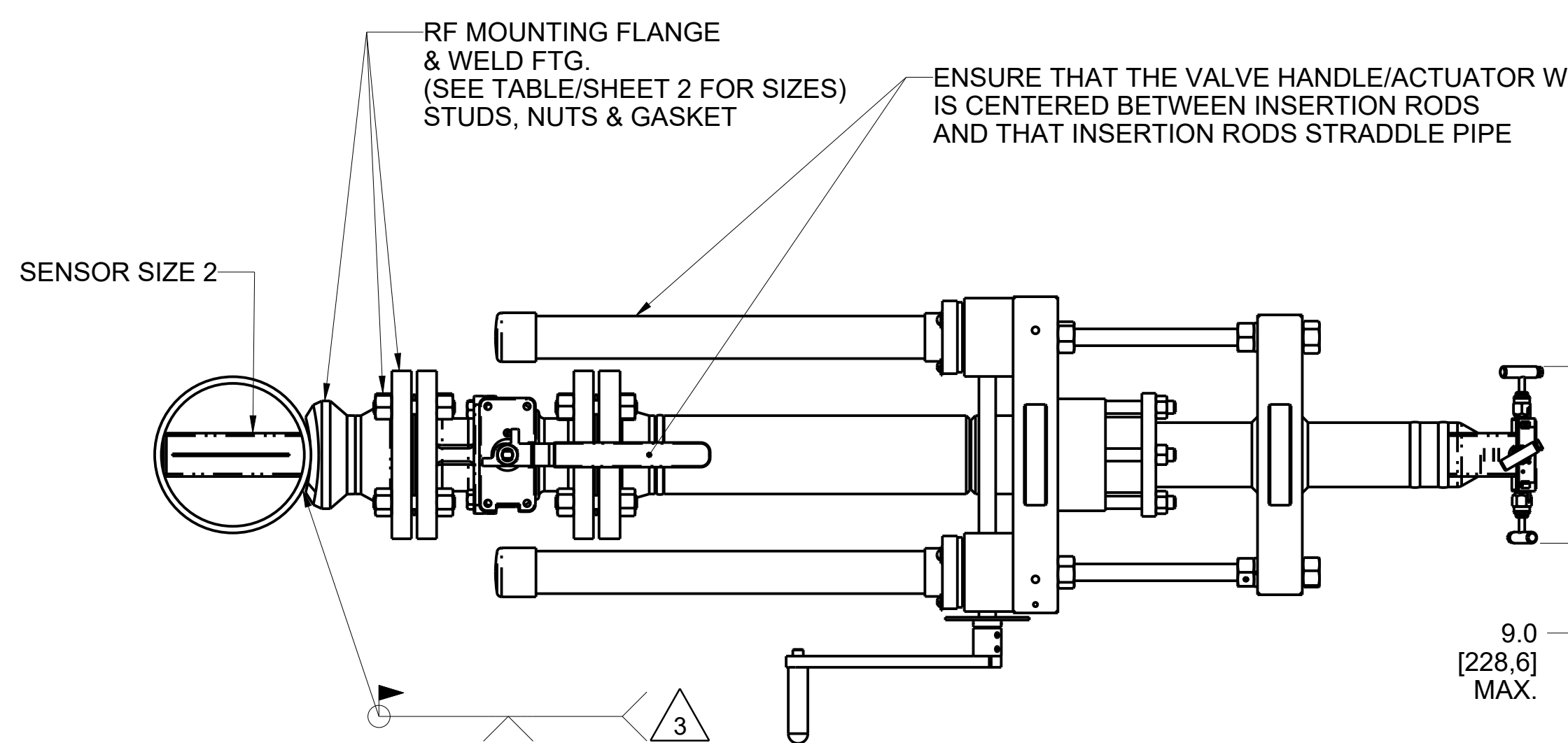
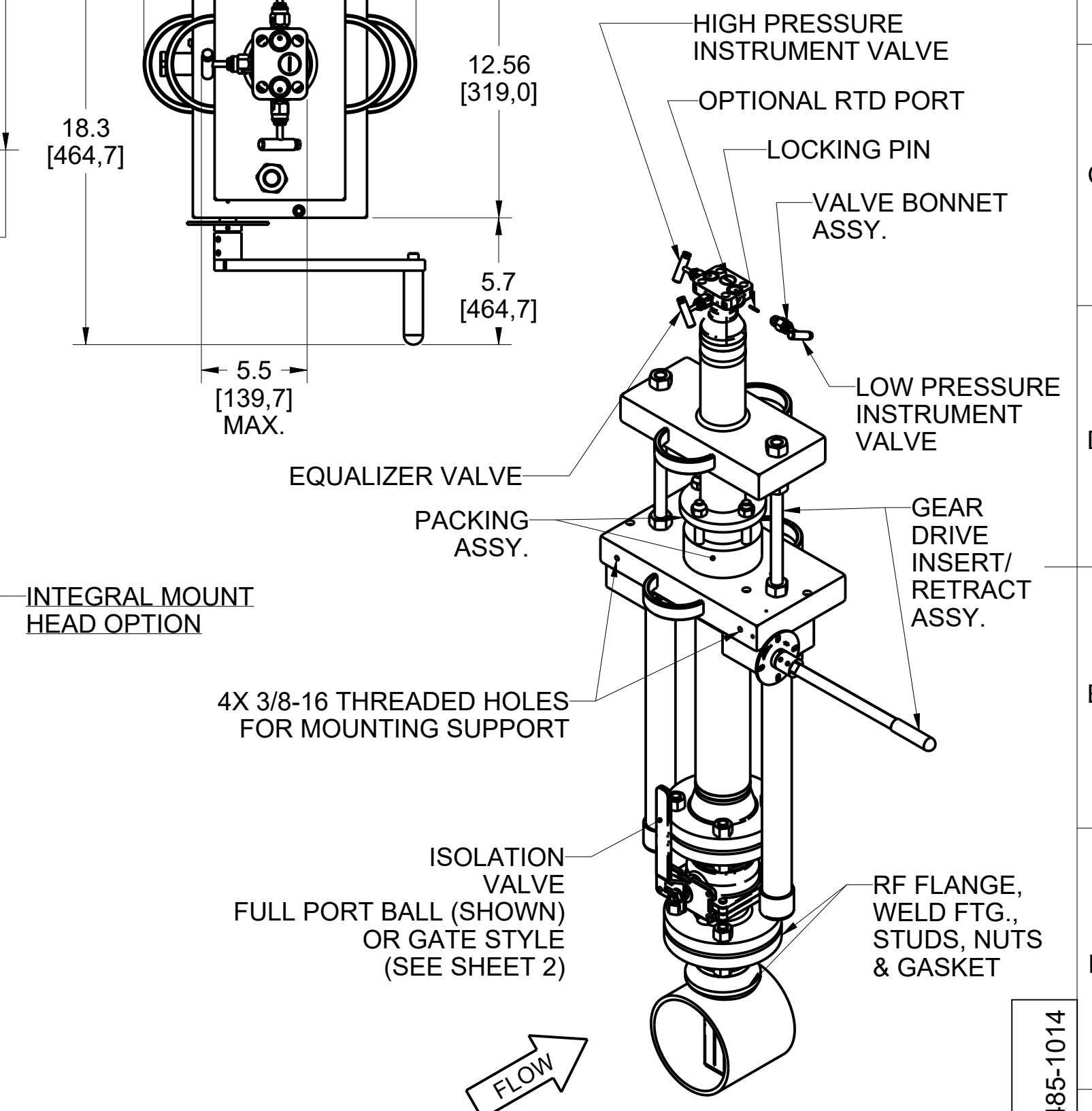


REVISION TABLE			
REVISION	ECO NO.	APP'D	DATE
AF	DS11053064	JR	10/15/15
DESCRIPTION			
REDRAWN IN PROE			



PROBE INSERTED: PI
 FORMULA FOR 'PI' = ID + WALL + ODV + 24.44 [620,8] FLANGED/GEAR DRIVE
 PROBE RETRACTED: PR
 FORMULA FOR 'PR' = 2x (ID + WALL + ODV) + 24.44 [620,8] FLANGED/GEAR DRIVE
 (SEE SHT 4 FOR MANUAL STYLE/SHEET 5 FOR THREADED GEAR DRIVE)

CAUTION
 FOR ACCURATE FLOW MEASUREMENT
 THE CORRECT HOLE SIZE IN PIPE MUST BE
1-5/16 INCH(34mm)
 DO NOT DRILL OVERSIZE
 DO NOT TORCH CUT HOLE



FLOW

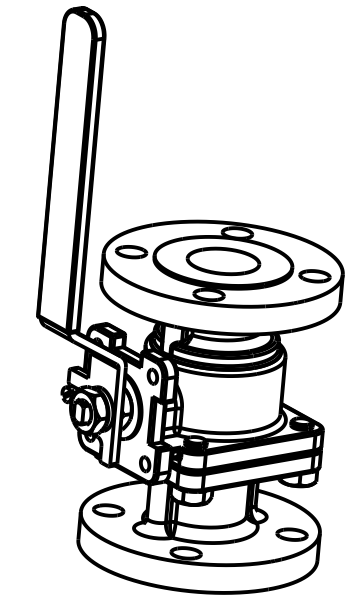
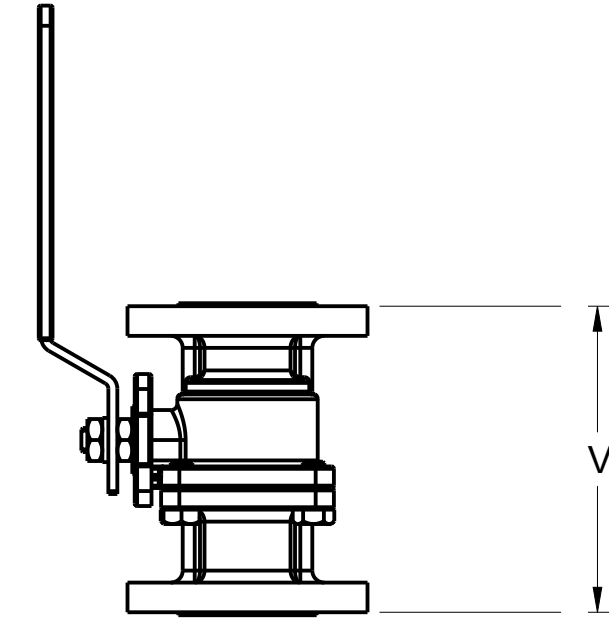
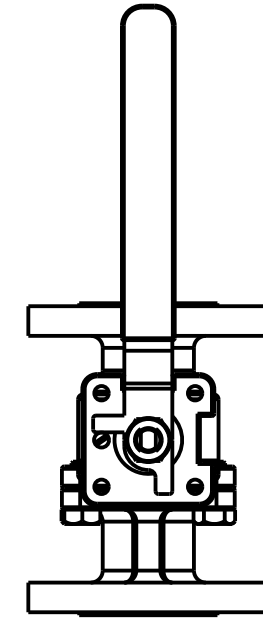
FLANGED / GEAR DRIVE FLO-TAP
 SENSOR SIZE 2

SEE SHEET 4 FOR MANUAL / FLO-TAP WITH GATE VALVE EXAMPLE
 SEE SHEET 5 FOR THREADED / FLO-TAP

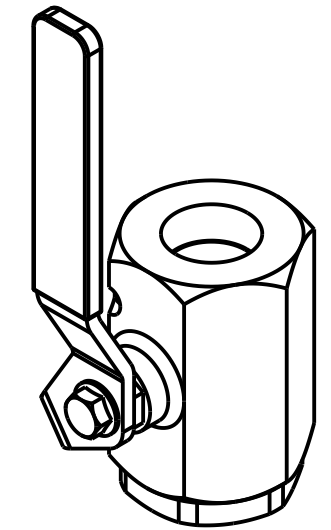
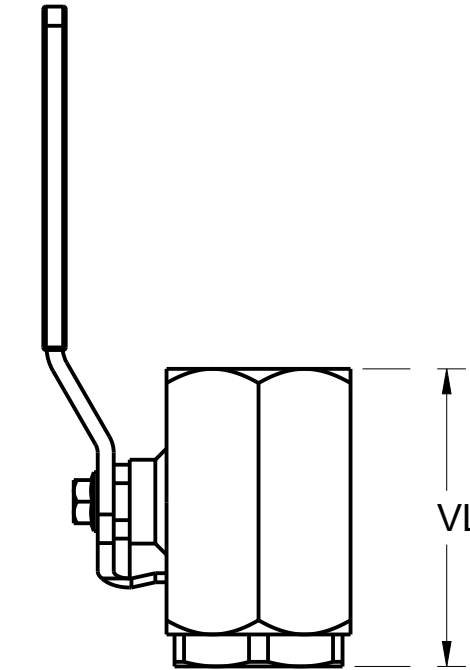
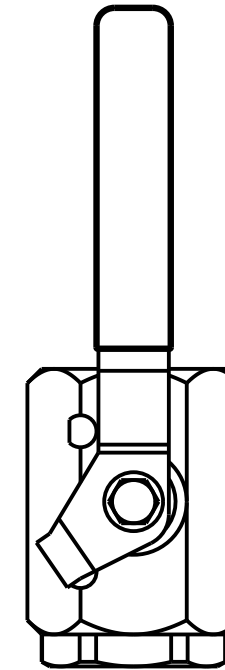
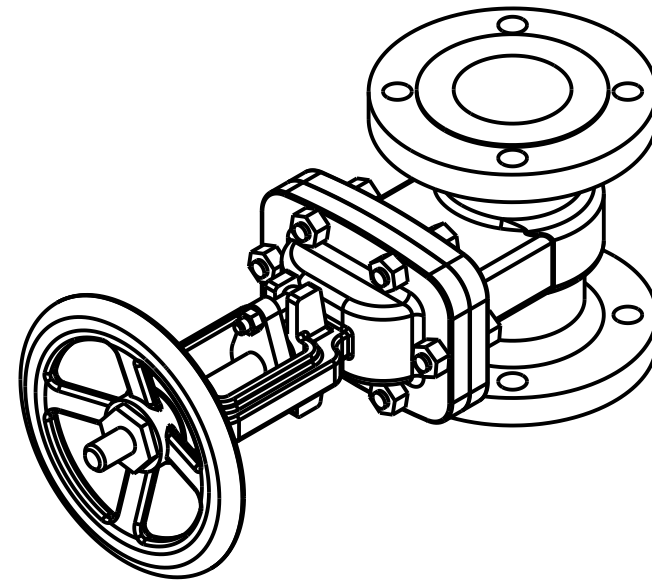
CONFIDENTIAL AND PROPRIETARY INFORMATION IS CONTAINED HEREIN AND MUST BE HANDLED ACCORDINGLY. ROSEMOUNT	SURFACE FINISH UNLESS OTHERWISE SPECIFIED	125	3RD ANGLE		SIZE C	SCALE 1/6	REV AF
UNLESS OTHERWISE SPECIFIED DIMENSIONS IN INCHES [mm]. REMOVE ALL BURRS AND SHARP EDGES.	ROSEMOUNT EMERSON 20 Market Boulevard - Chanhassen, MN 55317 USA						
-DEC TOLERANCES- .X ± .1 [2.5] .XX ± .02 [0.5] .XXX ± .010 [0.25]	TITLE: DIMENSION DRAWING, MODEL 485 ANNUBAR FLOWMETER (3051SFA, 3051CFA 2051CFA, 3095MFA) SENSOR SIZE 2 FLO-TAP 150#-600# ANSI						
FRACTIONS ± 1/32	ANGLES ± 2'	DR. SGE	07/13/15	DRAWING NO.	00485-1014		
APPD JR	07/13/15						
DO NOT SCALE PRINT	CAD MAINTAINED, (PRO/E)	PRODUCT CODE	-	DOC TYPE	-	SHEET 1 OF 5	

DRAWING NO. 00485-1014

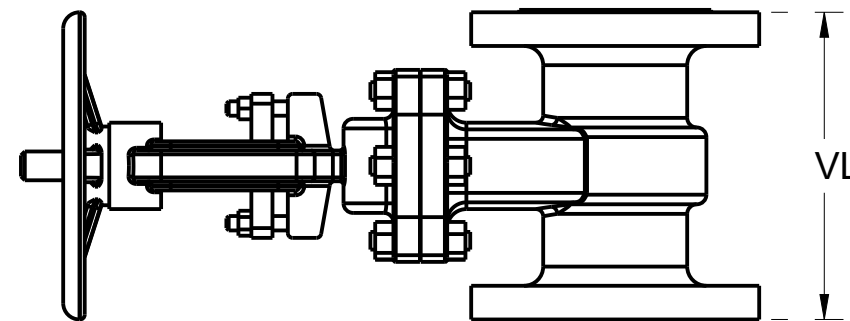
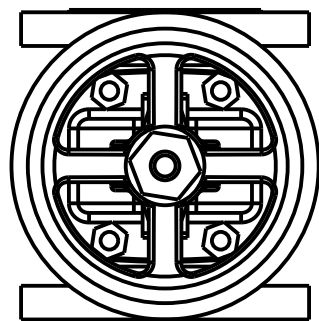
FLO-TAP SENSOR SIZE 2								
A	Min. Rod Reynolds	Probe Width	Flange Rating	Flange Size [NPS] OR Thread Size	ODF	ALL FLO-TAP		
						FLANGE VL ±.375 [9.5] BALL / GATE	ODV ±.500 [12.7]	
B	12500	1.060 [26.92]	Threaded	2" NPT	N/A	6.00 [152.4]	8.17 [207.5]	
			150# ANSI	2sch80	4.13 [104.9]	7.00 [177.8]	11.25 [285.8]	
			300# ANSI		4.38 [111.3]	8.50 [215.9]	13.00 [330.2]	
			600# ANSI		4.75 [120.7]	11.50 [292.1]	16.38 [416.0]	
			DN/PN 16	DN50	3.40 [86.4]	APPLICATION SPECIFIC DIMENSION		
			DN/PN 40		3.52 [89.4]			
			DN/PN 100		4.30 [109.2]			
			150# RTJ	2sch80	4.31 [109.5]			
			300# RTJ	4.63 [117.6]	8.50 [215.9]	13.25 [336.4]		
			600# RTJ	4.81 [122.2]	11.50 [292.1]	16.44 [417.5]		



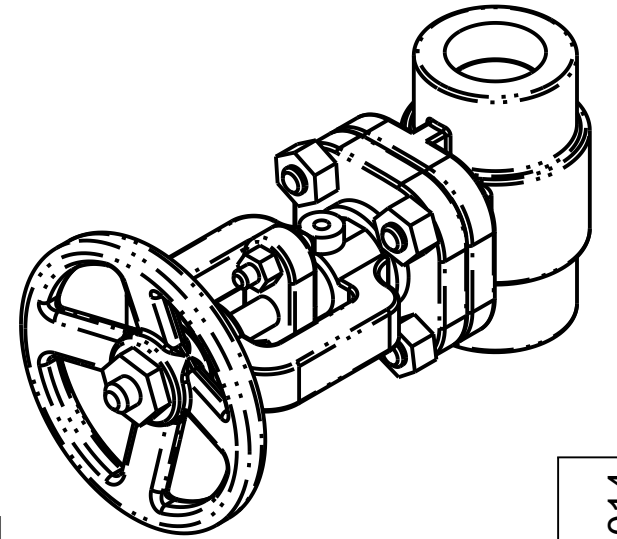
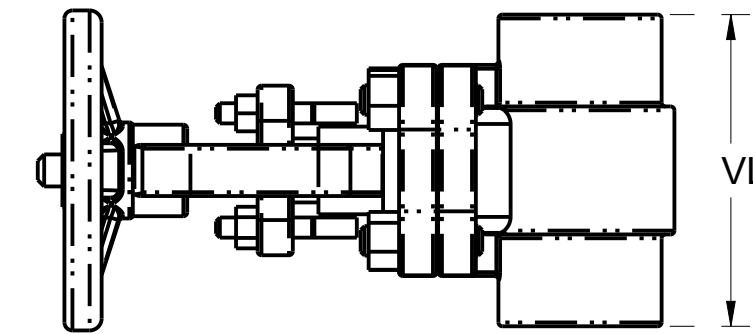
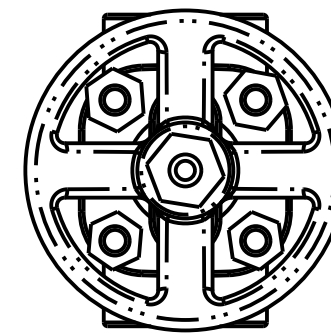
FULL PORT BALL VALVE / FLANGED



FULL PORT GATE VALVE / THREADED



FULL PORT GATE VALVE / FLANGED



FULL PORT GATE VALVE / THREADED

NOTES:

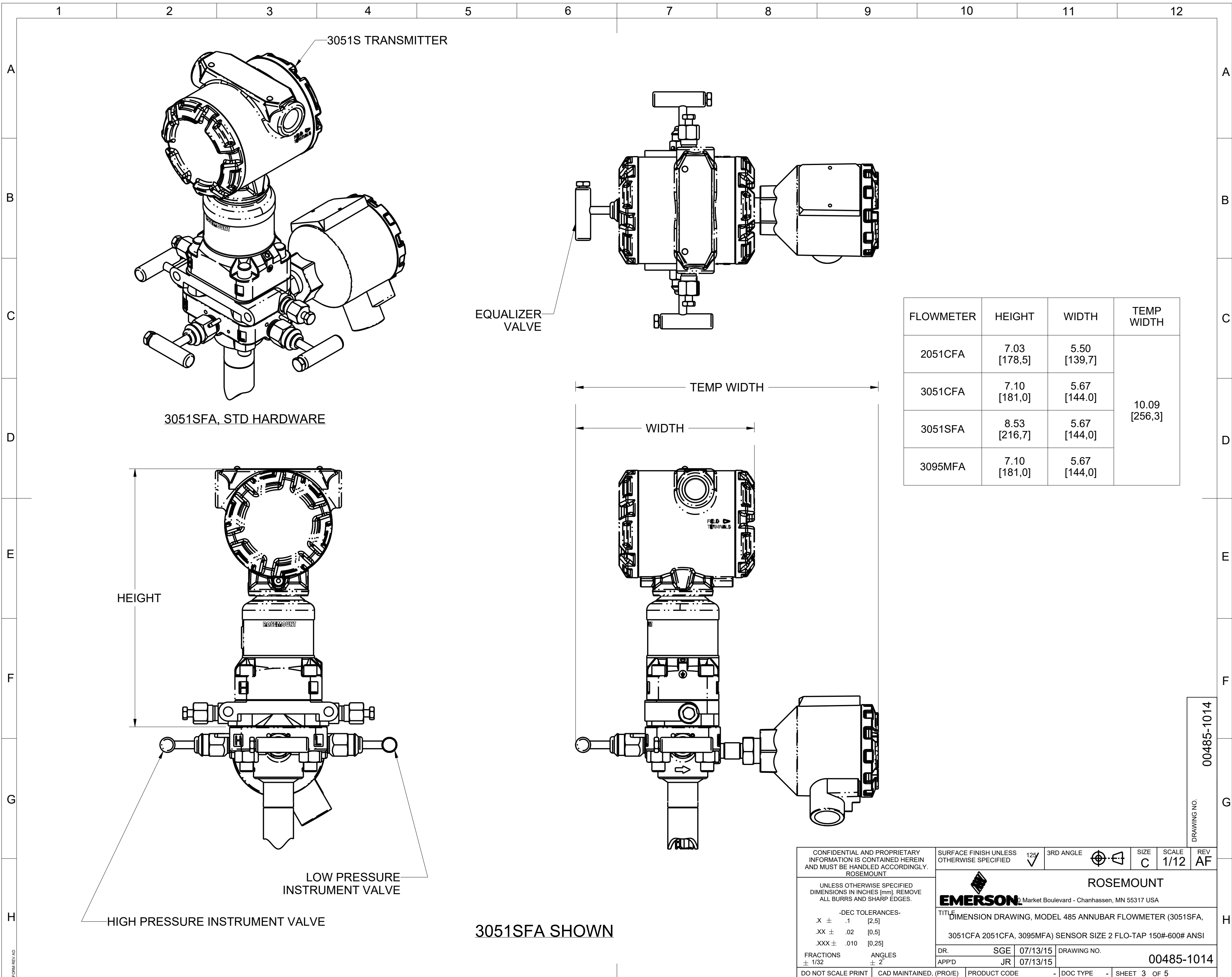
- ROSEMOUNT INC. CERTIFIES THIS DRAWING IS IN ACCORDANCE WITH ROSEMOUNT ENGINEERING SPECIFICATIONS AND ACCURATELY REPRESENTS THE EQUIPMENT FURNISHED.
- ALL ORIENTATIONS SHOWN FOR REFERENCE ONLY. FOR ACTUAL RECOMMENDED LOCATIONS AND ORIENTATIONS REFER TO INSTALLATION INSTRUCTION MANUAL 00809-0100-4809. QUICK INSTALLATION GUIDE (QIG) 00825-0500-4809 (THREADED FLO-TAP) OR 00825-0400-4809 (FLANGED FLO-TAP).
- FIELD WELD. REFER TO INSTALLATION INSTRUCTIONS FOR WELD REQUIREMENTS.
- MAXIMUM PRESSURE: 600lb ANSI EQUIVALENT (1440 PSIG AT 100° F/9928.5Kpa g at 37.8C) FOR 316SS.
- MAX TEMPERATURE: 500° F (260C) FOR INTEGRAL TRANSMITTER MOUNTING
850° F (454.4C) FOR STAINLESS STEEL REMOTE TRANSMITTER MOUNTING
850° F (454.4C) FOR HASTELLOY REMOTE TRANSMITTER MOUNTING
- FOR MODEL SELECTIONS, REFER TO ROSEMOUNT PRODUCT DATA SHEETS.

00485-1014

DRAWING NO.

CONFIDENTIAL AND PROPRIETARY INFORMATION IS CONTAINED HEREIN AND MUST BE HANDLED ACCORDINGLY. ROSEMOUNT	SURFACE FINISH UNLESS OTHERWISE SPECIFIED	125	3RD ANGLE	SIZE C	SCALE 1/12	REV AF
UNLESS OTHERWISE SPECIFIED DIMENSIONS IN INCHES [mm]. REMOVE ALL BURRS AND SHARP EDGES.	EMERSON Market Boulevard - Chanhassen, MN 55317 USA					
TITLE DIMENSION DRAWING, MODEL 485 ANNUBAR FLOWMETER (3051SFA, 3051CFA 2051CFA, 3095MFA) SENSOR SIZE 2 FLO-TAP 150#-600# ANSI						
DR. SGE 07/13/15	DRAWING NO. 00485-1014					
APP'D JR 07/13/15						
DO NOT SCALE PRINT	CAD MAINTAINED, (PRO/E)	PRODUCT CODE	DOC TYPE	SHEET 2 OF 5		

FORM REV/AD



FLOWMETER	HEIGHT	WIDTH	TEMP WIDTH
2051CFA	7.03 [178,5]	5.50 [139,7]	10.09 [256,3]
3051CFA	7.10 [181,0]	5.67 [144,0]	
3051SFA	8.53 [216,7]	5.67 [144,0]	
3095MFA	7.10 [181,0]	5.67 [144,0]	

CONFIDENTIAL AND PROPRIETARY INFORMATION IS CONTAINED HEREIN AND MUST BE HANDLED ACCORDINGLY. ROSEMOUNT

SURFACE FINISH UNLESS OTHERWISE SPECIFIED $\sqrt{\text{125}}$ 3RD ANGLE 3RD ANGLE SIZE C SCALE 1/12 REV AF

UNLESS OTHERWISE SPECIFIED DIMENSIONS IN INCHES [mm]. REMOVE ALL BURRS AND SHARP EDGES.

-DEC TOLERANCES-
.X ± .1 [2,5]
.XX ± .02 [0,5]
.XXX ± .010 [0,25]

FRACTIONS ± 1/32 ANGLES ± 2°

DO NOT SCALE PRINT CAD MAINTAINED, (PRO/E) PRODUCT CODE - DOC TYPE - SHEET 3 OF 5

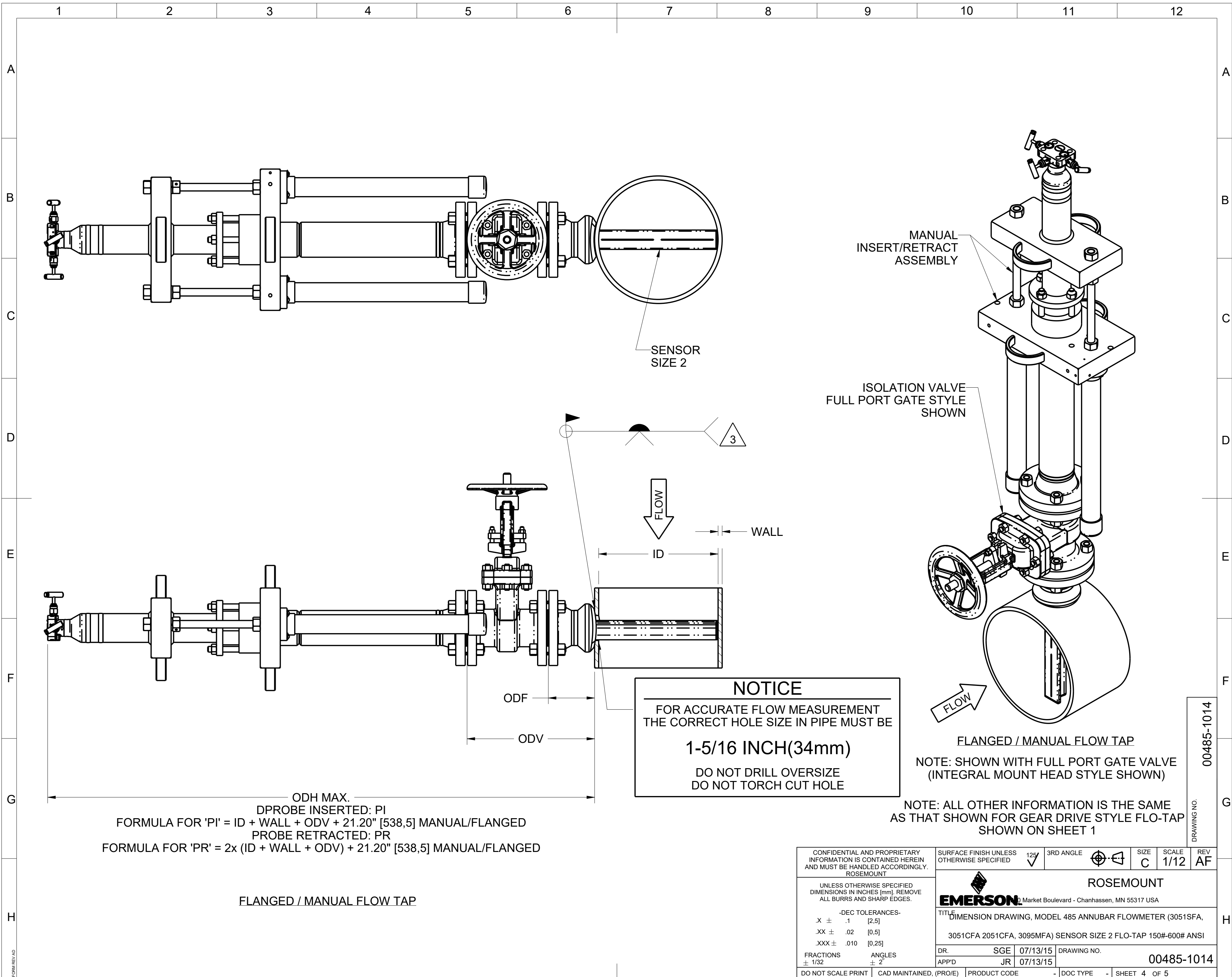
EMERSON ROSEMOUNT
20 Market Boulevard - Chanhassen, MN 55317 USA

TITLE DIMENSION DRAWING, MODEL 485 ANNUBAR FLOWMETER (3051SFA, 3051CFA 2051CFA, 3095MFA) SENSOR SIZE 2 FLO-TAP 150#-600# ANSI

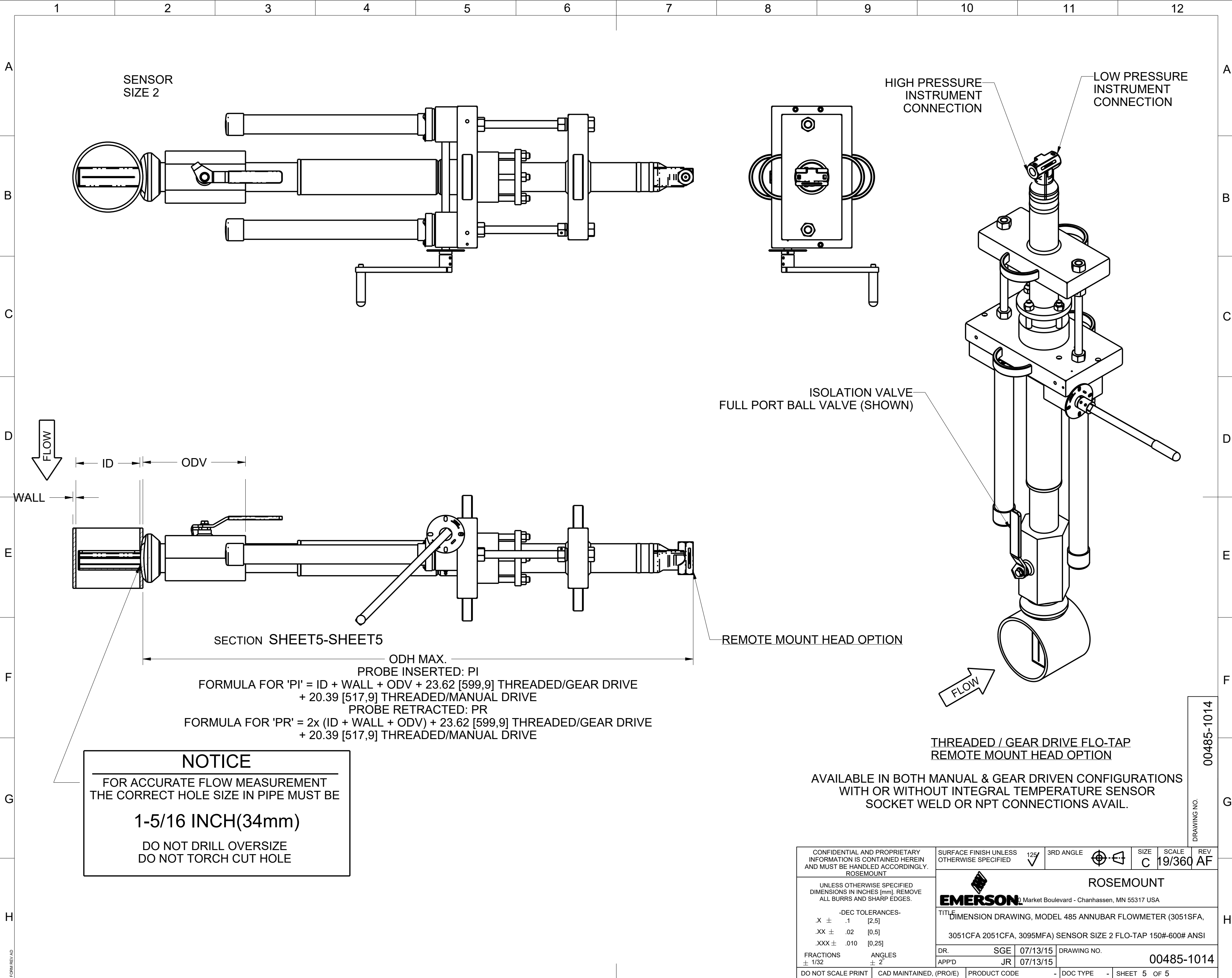
DR. SGE 07/13/15 DRAWING NO. 00485-1014
APP'D JR 07/13/15

DRAWING NO. 00485-1014

3051SFA SHOWN



CONFIDENTIAL AND PROPRIETARY INFORMATION IS CONTAINED HEREIN AND MUST BE HANDLED ACCORDINGLY. ROSEMOUNT	SURFACE FINISH UNLESS OTHERWISE SPECIFIED	125	3RD ANGLE		SIZE C	SCALE 1/12	REV AF
UNLESS OTHERWISE SPECIFIED DIMENSIONS IN INCHES [mm]. REMOVE ALL BURRS AND SHARP EDGES.	ROSEMOUNT EMERSON						
-DEC TOLERANCES- .X ± .1 [2.5] .XX ± .02 [0.5] .XXX ± .010 [0.25]	TITL5 DIMENSION DRAWING, MODEL 485 ANNUBAR FLOWMETER (3051SFA, 3051CFA 2051CFA, 3095MFA) SENSOR SIZE 2 FLO-TAP 150#-600# ANSI						
FRACTIONS ± 1/32	ANGLES ± 2'	DR. SGE	07/13/15	DRAWING NO.	00485-1014		
DO NOT SCALE PRINT	CAD MAINTAINED, (PRO/E)	PRODUCT CODE	-	DOC TYPE	- SHEET 4 OF 5		



SENSOR
SIZE 2

HIGH PRESSURE
INSTRUMENT
CONNECTION

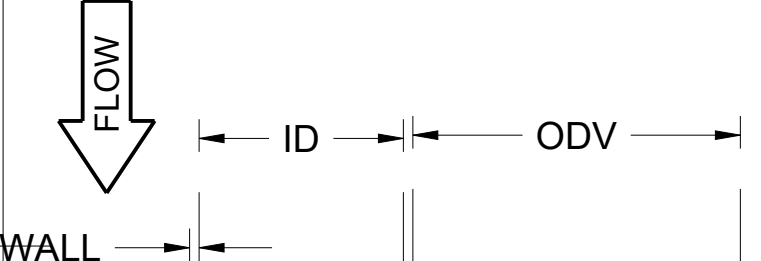
LOW PRESSURE
INSTRUMENT
CONNECTION

ISOLATION VALVE
FULL PORT BALL VALVE (SHOWN)

REMOTE MOUNT HEAD OPTION

THREADED / GEAR DRIVE FLO-TAP
REMOTE MOUNT HEAD OPTION

AVAILABLE IN BOTH MANUAL & GEAR DRIVEN CONFIGURATIONS
WITH OR WITHOUT INTEGRAL TEMPERATURE SENSOR
SOCKET WELD OR NPT CONNECTIONS AVAIL.



SECTION SHEET5-SHEET5

ODH MAX.
PROBE INSERTED: PI
FORMULA FOR 'PI' = ID + WALL + ODV + 23.62 [599,9] THREADED/GEAR DRIVE
+ 20.39 [517,9] THREADED/MANUAL DRIVE
PROBE RETRACTED: PR
FORMULA FOR 'PR' = 2x (ID + WALL + ODV) + 23.62 [599,9] THREADED/GEAR DRIVE
+ 20.39 [517,9] THREADED/MANUAL DRIVE

NOTICE
FOR ACCURATE FLOW MEASUREMENT
THE CORRECT HOLE SIZE IN PIPE MUST BE
1-5/16 INCH(34mm)
DO NOT DRILL OVERSIZE
DO NOT TORCH CUT HOLE

DRAWING NO. 00485-1014

CONFIDENTIAL AND PROPRIETARY INFORMATION IS CONTAINED HEREIN AND MUST BE HANDLED ACCORDINGLY. ROSEMOUNT	SURFACE FINISH UNLESS OTHERWISE SPECIFIED	125	3RD ANGLE		SIZE C	SCALE 19/360	REV AF
	UNLESS OTHERWISE SPECIFIED DIMENSIONS IN INCHES [mm]. REMOVE ALL BURRS AND SHARP EDGES.						
-DEC TOLERANCES- .X ± .1 [2.5] .XX ± .02 [0.5] .XXX ± .010 [0.25]	FRACTIONS ± 1/32		ANGLES ± 2°		DR. SGE 07/13/15	DRAWING NO. 00485-1014	
DO NOT SCALE PRINT	CAD MAINTAINED, (PRO/E)	PRODUCT CODE	DOC TYPE	SHEET 5 OF 5			