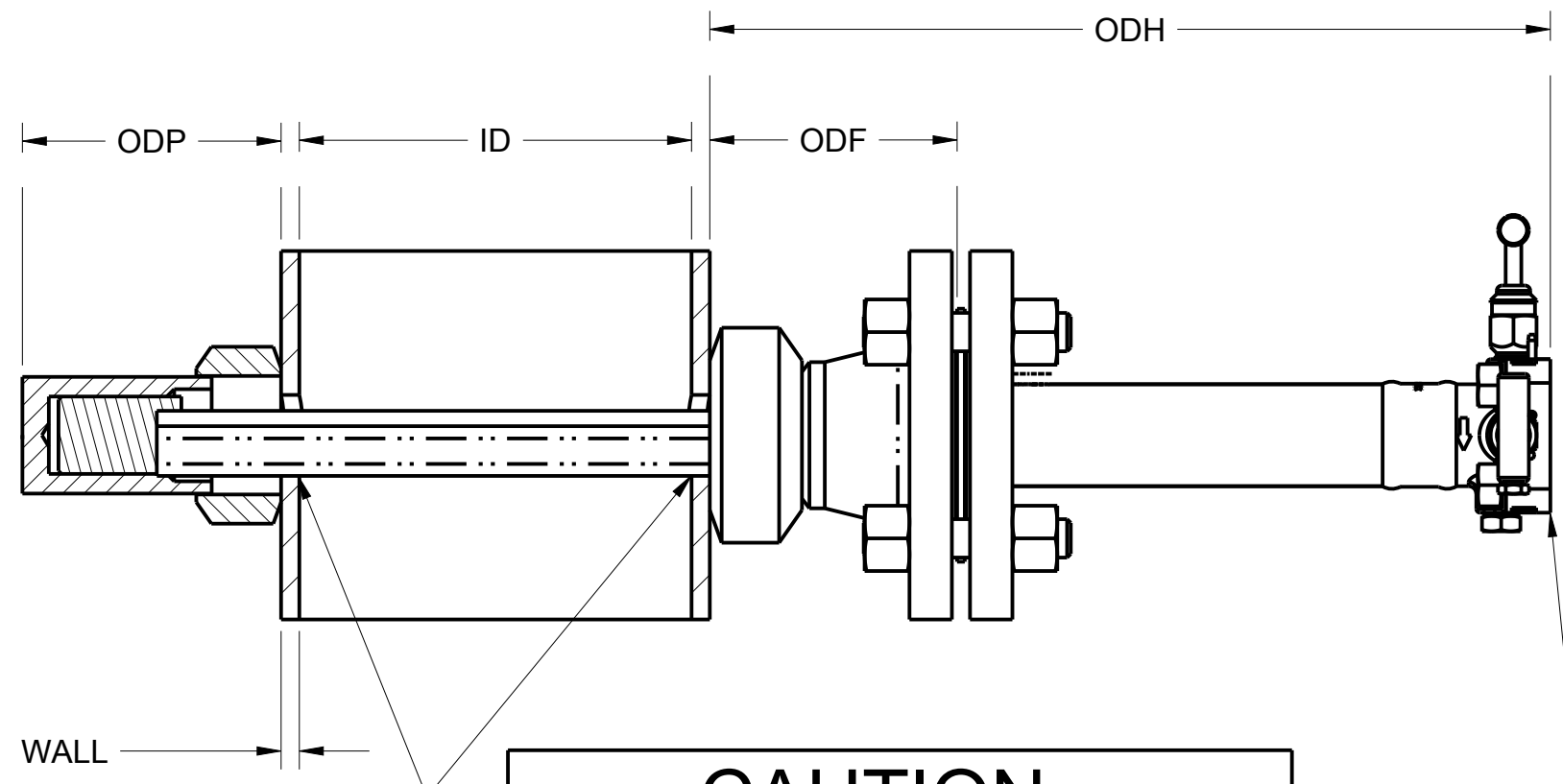
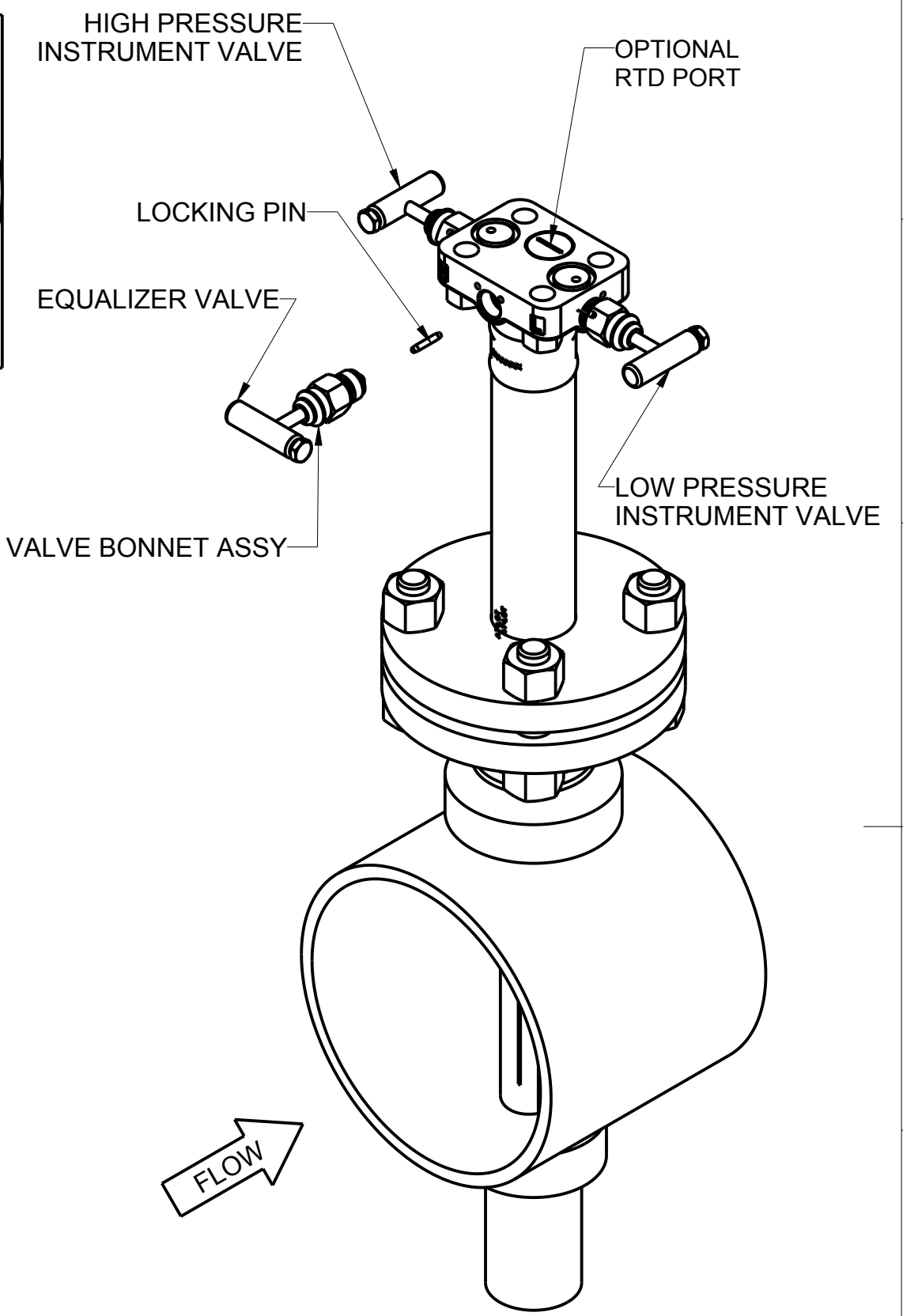
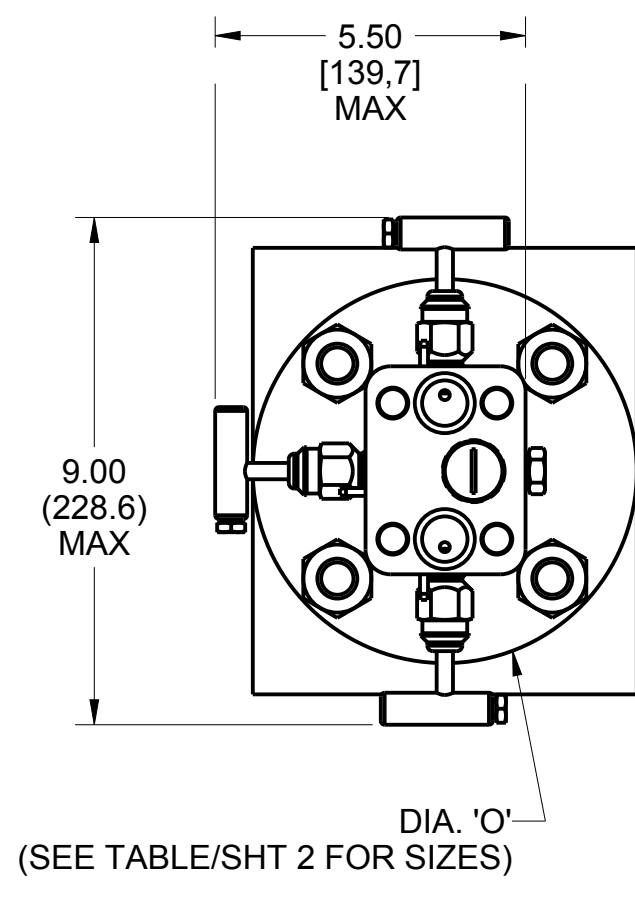
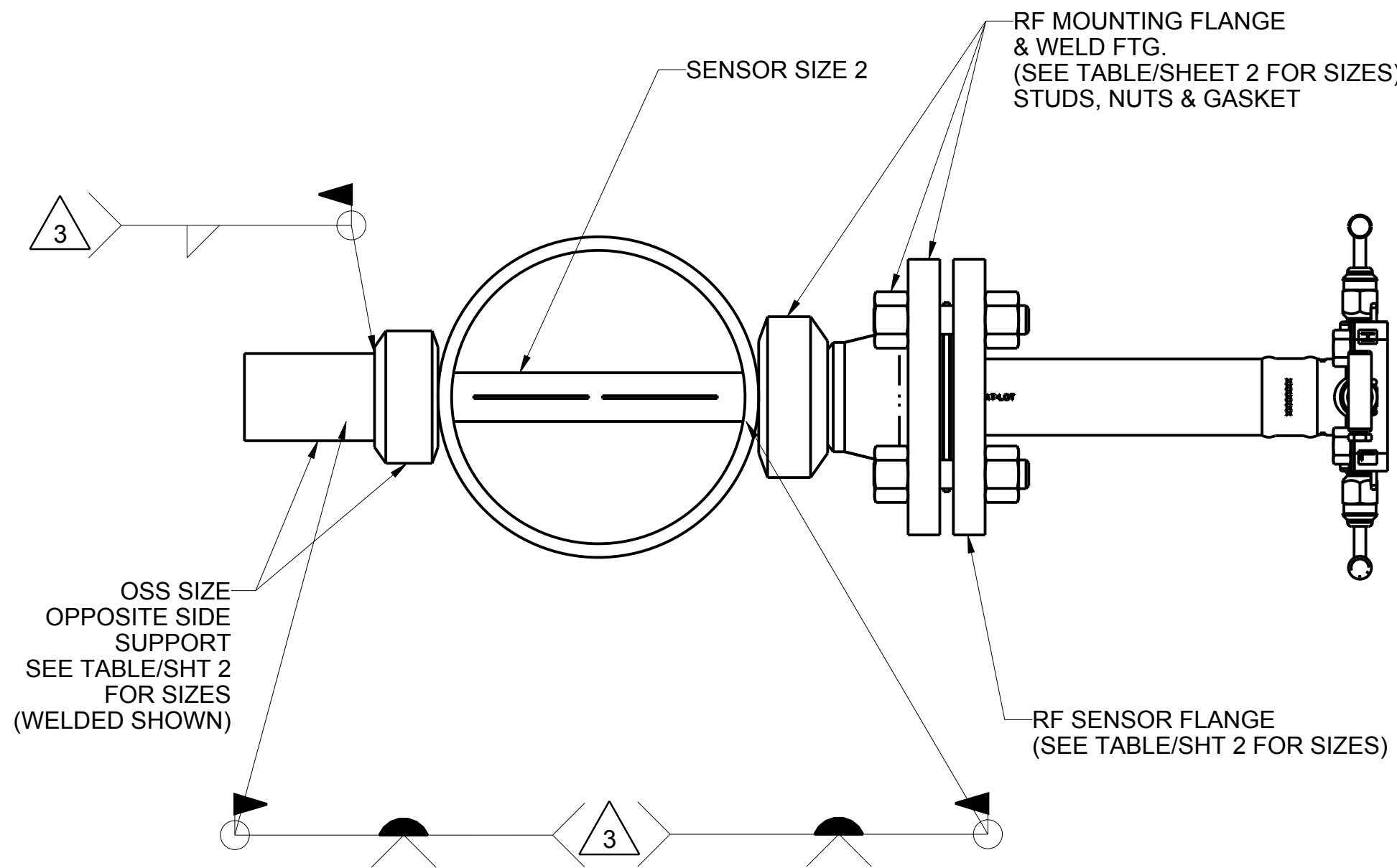


REVISION TABLE			
REVISION	ECO NO.	APP'D	DATE
AH	DS11053064	JR	10/14/15
DESCRIPTION			
REDRAWN IN PROE			



CAUTION
 FOR ACCURATE FLOW MEASUREMENT
 THE CORRECT HOLE SIZE IN PIPE MUST BE:
1-5/16 INCH (34mm)
 DO NOT DRILL OVERSIZE
 DO NOT TORCH CUT HOLE

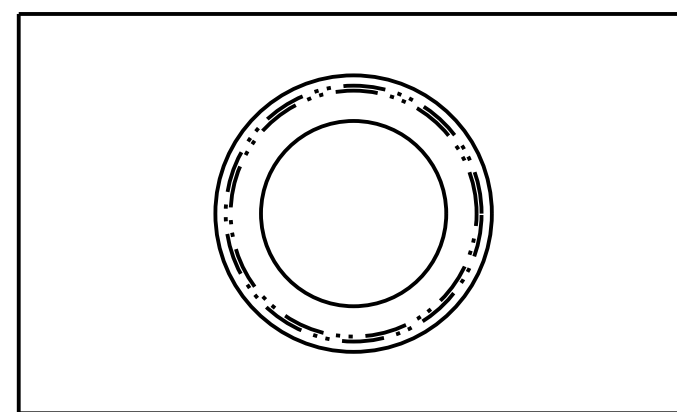
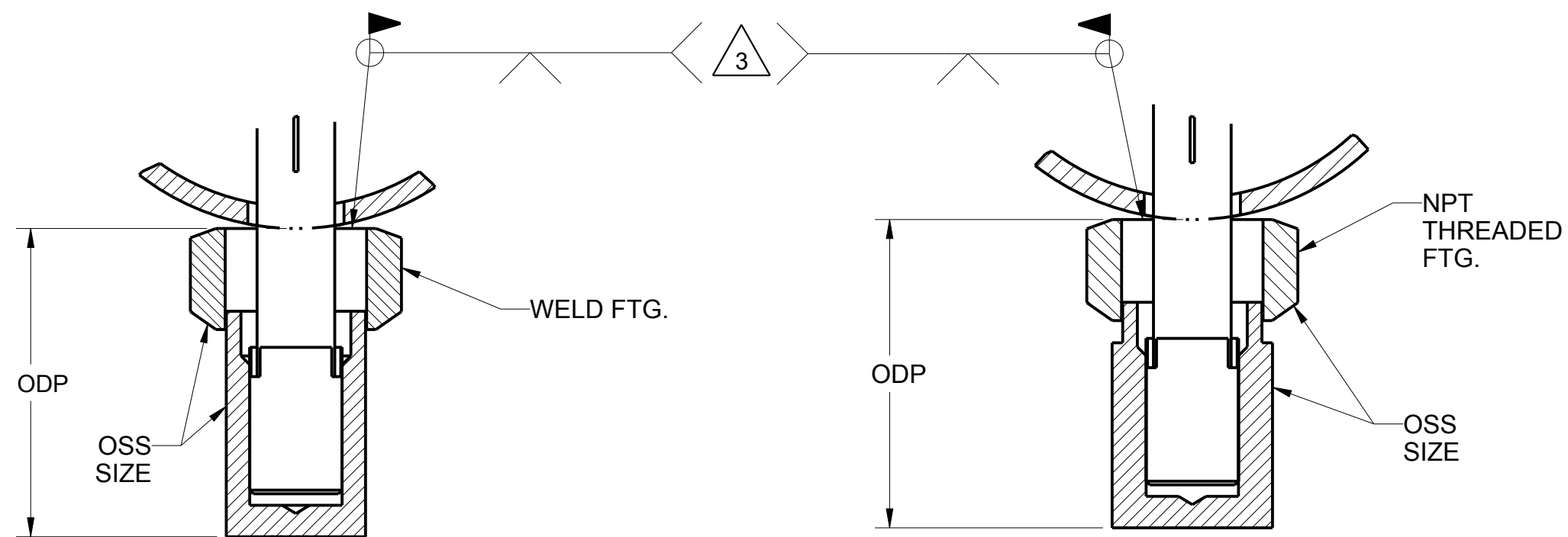
NOTE: UNLESS OTHERWISE SPECIFIED
 ALL INFORMATION IS BOTH (TYP) & GENERAL
 TO STANDARD PRODUCT DESIGN
 ALL PIPE SECTIONS SHOWN FOR REFERENCE ONLY

CONFIDENTIAL AND PROPRIETARY INFORMATION IS CONTAINED HEREIN AND MUST BE HANDLED ACCORDINGLY. ROSEMOUNT	SURFACE FINISH UNLESS OTHERWISE SPECIFIED	125	3RD ANGLE		SIZE C	SCALE 1/3	REV AH
UNLESS OTHERWISE SPECIFIED DIMENSIONS IN INCHES [mm]. REMOVE ALL BURRS AND SHARP EDGES.	 8200 Market Boulevard - Chanhassen, MN 55317 USA						
-DEC TOLERANCES-	TITLE DIMENSION DRAWING, MODEL 485 ANNUBAR FLOWMETER (3051SFA , 3051CFA 2051CFA,3095MFA) SENSOR SIZE 2 FLANGED 150# - 2500# ANSI						
.X ± .1 [2.5]	DR. SGE 07/07/15 DRAWING NO. 00485-1013						
.XX ± .02 [0.5]	APPD JR 07/07/15						
.XXX ± .010 [0.25]	DO NOT SCALE PRINT CAD MAINTAINED, (PROE) PRODUCT CODE DOC TYPE SHEET 1 OF 5						
FRACTIONS ± 1/32							
ANGLES ± 2°							

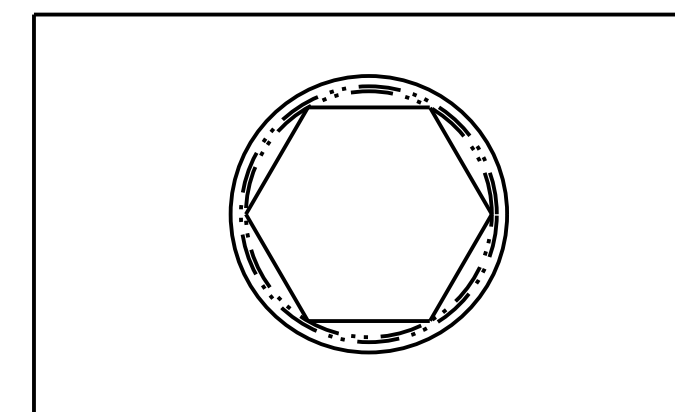
DRAWING NO. 00485-1013

FORM REV/AB

Flanged																
Sensor Size	Min. Rod Reynolds	Probe Width*	3-valve DM head width*	Flange Rating	BFT*	O*	Flange Size (NPS)	ODF*	ODH* max	ODP* max	OSS Size (NPS)					
2	12500	1.060 [26.92]	9.00 [229.0]	Threaded								5.00 [127.0]	1-1/2sch80			
				150# ANSI	0.75 [19.1]	6.00 [152.4]	2sch80	4.13 [104.9]	12.00 [304.8]	5.00 [127.0]	1-1/2sch80					
				300# ANSI	0.88 [22.4]	6.50 [165.1]		4.38 [111.3]								
				600# ANSI	1.25 [31.8]	6.50 [165.1]		4.75 [120.7]								
				900# ANSI	1.75 [44.5]	8.50 [215.9]	3schXXH	5.88 [149.4]	10.50 [266.7]	5.00 [127.0]	1-1/2sch80					
				1500# ANSI	2.88 [73.2]	12.00 [304.8]		9.88 [251.0]	15.63 [396.9]		4.50 [114.3]			2schXXS		
				DN/PN 16				0.71 [18.0]	6.50 [165.1]	DN50	3.40 [86.4]			12.00 [304.8]	5.00 [127.0]	1-1/2sch80
				DN/PN 40				0.79 [20.1]			3.52 [89.4]					1-1/2sch80
				DN/PN 100				1.10 [27.9]			7.68 [195.0]					4.30 [109.2]
				150# RTJ				0.94 [23.9]	6.00 [152.4]	2sch80	4.31 [109.5]			12.00 [304.8]	5.00 [127.0]	1-1/2sch80
				300# RTJ				1.13 [28.7]	6.50 [165.1]		4.63 [117.6]					1-1/2sch80
				600# RTJ				1.31 [33.3]	6.50 [165.1]		4.81 [122.2]					1-1/2sch80
				900# RTJ				1.81 [46.0]	8.50 [215.9]	3schXXH	5.94 [150.9]			10.63 [270.0]	5.00 [127.0]	1-1/2sch80
				1500# RTJ				3.00 [76.2]	12.00 [304.8]		10.00 [254.0]			15.87 [403.1]		4.50 [114.3]



TIP OPTION 'D'
EXTENDED TIP/WELDED



TIP OPTION 'C'
EXTENDED TIP/NPT THREADED

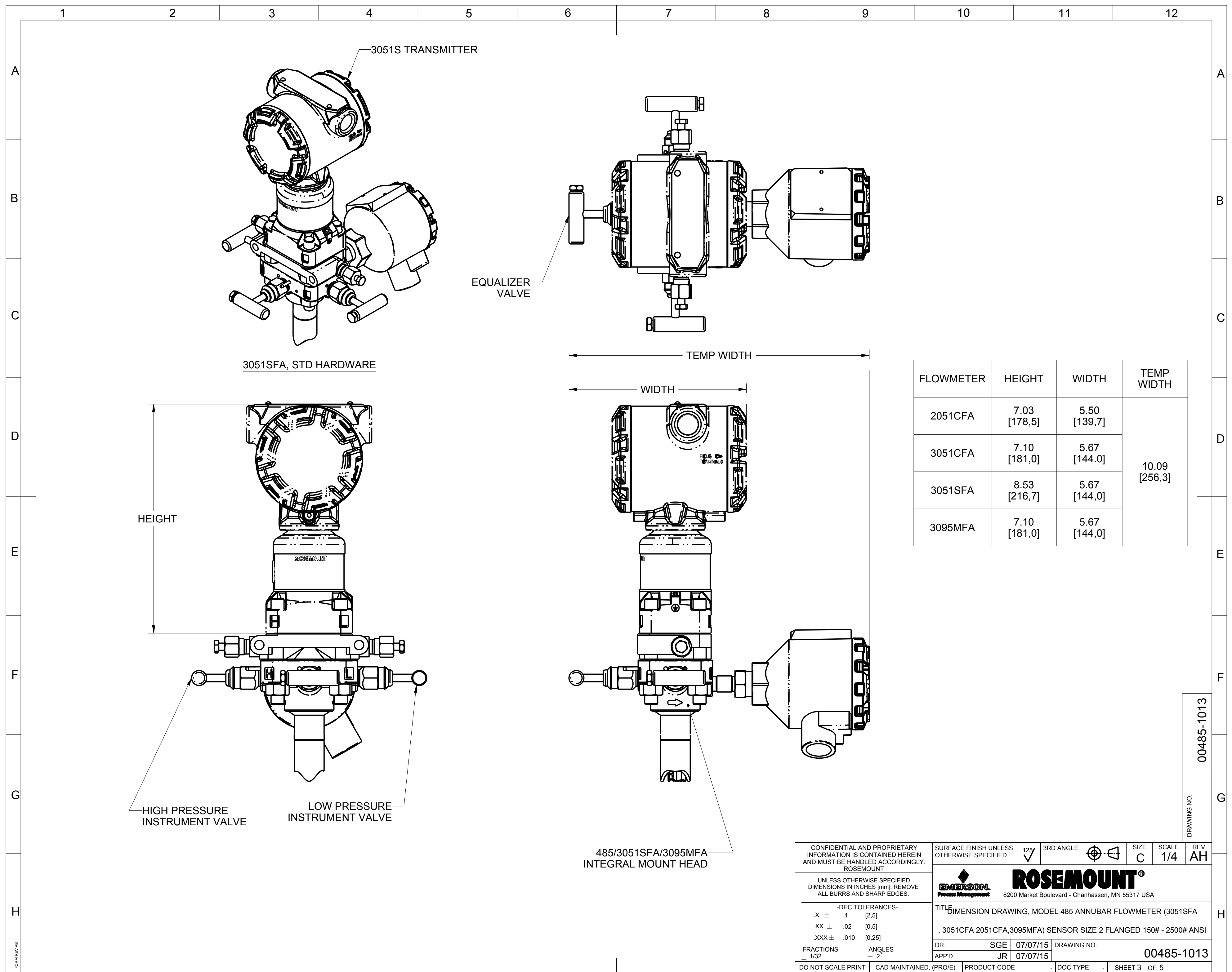
NOTES:

- ROSEMOUNT INC. CERTIFIES THIS DRAWING IS AN ACCORDANCE WITH ROSEMOUNT ENGINEERING SPECIFICATIONS AND ACCURATELY REPRESENTS THE EQUIPMENT FURNISHED.
- ALL ORIENTATIONS SHOWN FOR REFERENCE ONLY. FOR ACTUAL RECOMMENDED LOCATIONS AND ORIENTATIONS REFER TO INSTALLATION INSTRUCTION MANUAL 00809-0100-4809, QUICK INSTALLATION GUIDE (QIG) 00825-0100-4809.
- FIELD WELD REFER TO INSTALLATION INSTRUCTIONS FOR WELD REQUIREMENTS.
- MAXIMUM PRESSURE: 2500# ANSI EQUIVALENT (6,000 PSIG AT 100° F / 41368.54 Kps AT 37.8° C) FOR 316SS.
- MAX TEMPERATURE: 500° F (260° C) FOR INTERNAL TRANSMITTER MOUNTING
850° F (454.4° C) FOR STAINLESS STEEL REMOTE TRANSMITTER MOUNTING
1250° F (676.7° C) FOR HASTELLOY REMOTE TRANSMITTER MOUNTING
- FOR MODEL SELECTIONS, REFER TO ROSEMOUNT PRODUCT DATA SHEETS.

OPPOSITE SIDE SUPPORT OPTIONS

CONFIDENTIAL AND PROPRIETARY INFORMATION IS CONTAINED HEREIN AND MUST BE HANDLED ACCORDINGLY. ROSEMOUNT	SURFACE FINISH UNLESS OTHERWISE SPECIFIED	125	3RD ANGLE	SIZE C	SCALE 1/2	REV AH
UNLESS OTHERWISE SPECIFIED DIMENSIONS IN INCHES [mm]. REMOVE ALL BURRS AND SHARP EDGES.						
-DEC TOLERANCES-	TITLE DIMENSION DRAWING, MODEL 485 ANNUBAR FLOWMETER (3051SFA , 3051CFA 2051CFA,3095MFA) SENSOR SIZE 2 FLANGED 150# - 2500# ANSI					
.X ± .1 [2.5]	DR. SGE 07/07/15 DRAWING NO. 00485-1013					
.XX ± .02 [0.5]	APP'D JR 07/07/15					
.XXX ± .010 [0.25]	DO NOT SCALE PRINT CAD MAINTAINED, (PRO/E) PRODUCT CODE DOC TYPE SHEET 2 OF 5					

DRAWING NO. 00485-1013



3051SFA, STD HARDWARE

FLOWMETER	HEIGHT	WIDTH	TEMP WIDTH
2051CFA	7.03 [178,5]	5.50 [139,7]	10.09 [256,3]
3051CFA	7.10 [181,0]	5.67 [144,0]	
3051SFA	8.53 [216,7]	5.67 [144,0]	
3095MFA	7.10 [181,0]	5.67 [144,0]	

485/3051SFA/3095MFA
INTEGRAL MOUNT HEAD

CONFIDENTIAL AND PROPRIETARY INFORMATION IS CONTAINED HEREIN AND MUST BE HANDLED ACCORDINGLY. ROSEMOUNT

SURFACE FINISH UNLESS OTHERWISE SPECIFIED 125° 3RD ANGLE ϕ SIZE C SCALE 1/4 REV AH

UNLESS OTHERWISE SPECIFIED DIMENSIONS IN INCHES [mm]. REMOVE ALL BURRS AND SHARP EDGES.

EMERSON **ROSEMOUNT**
Process Management 8200 Market Boulevard - Chanhassen, MN 55317 USA

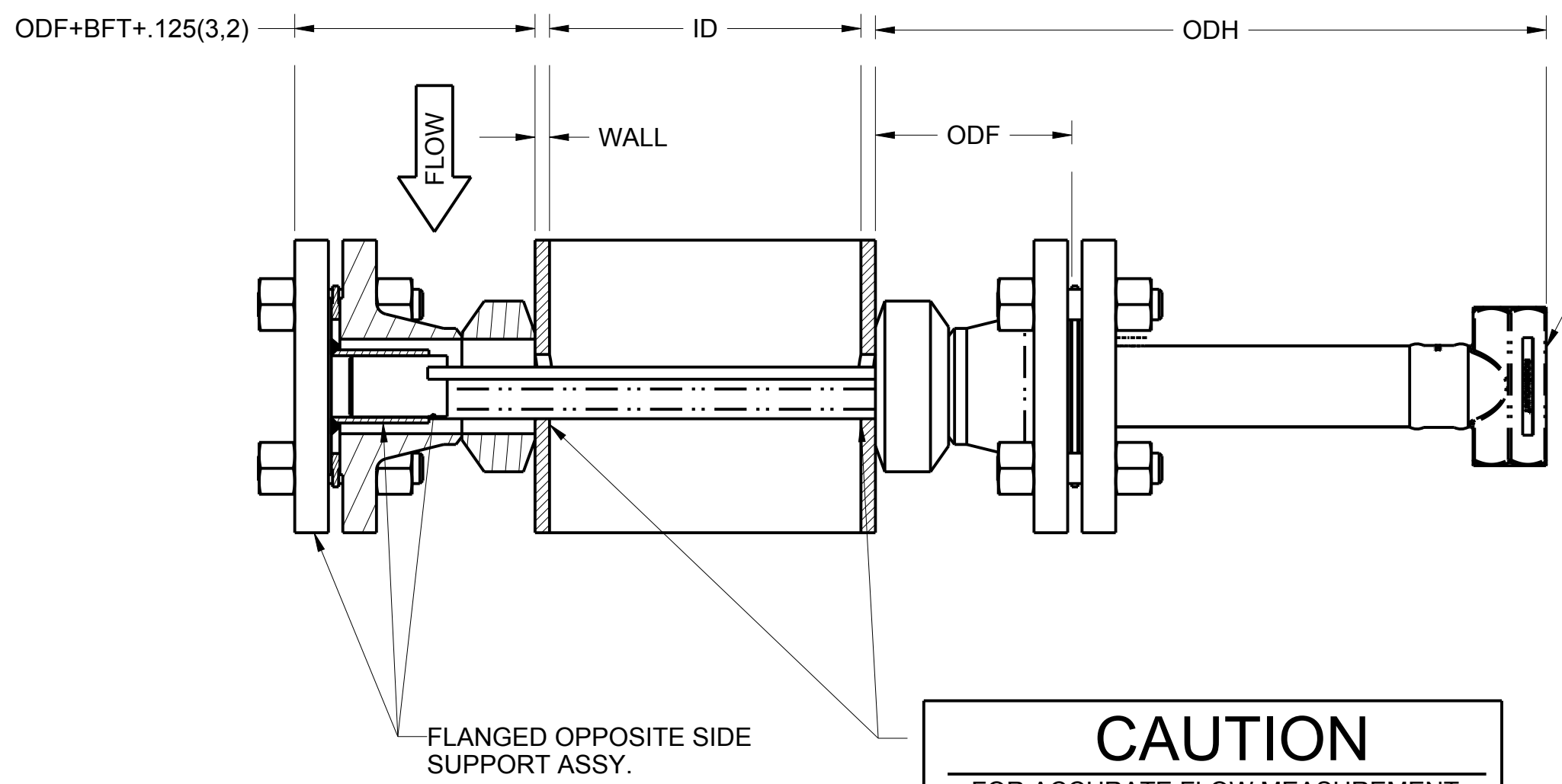
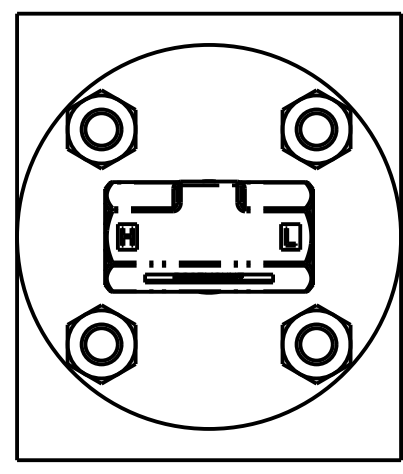
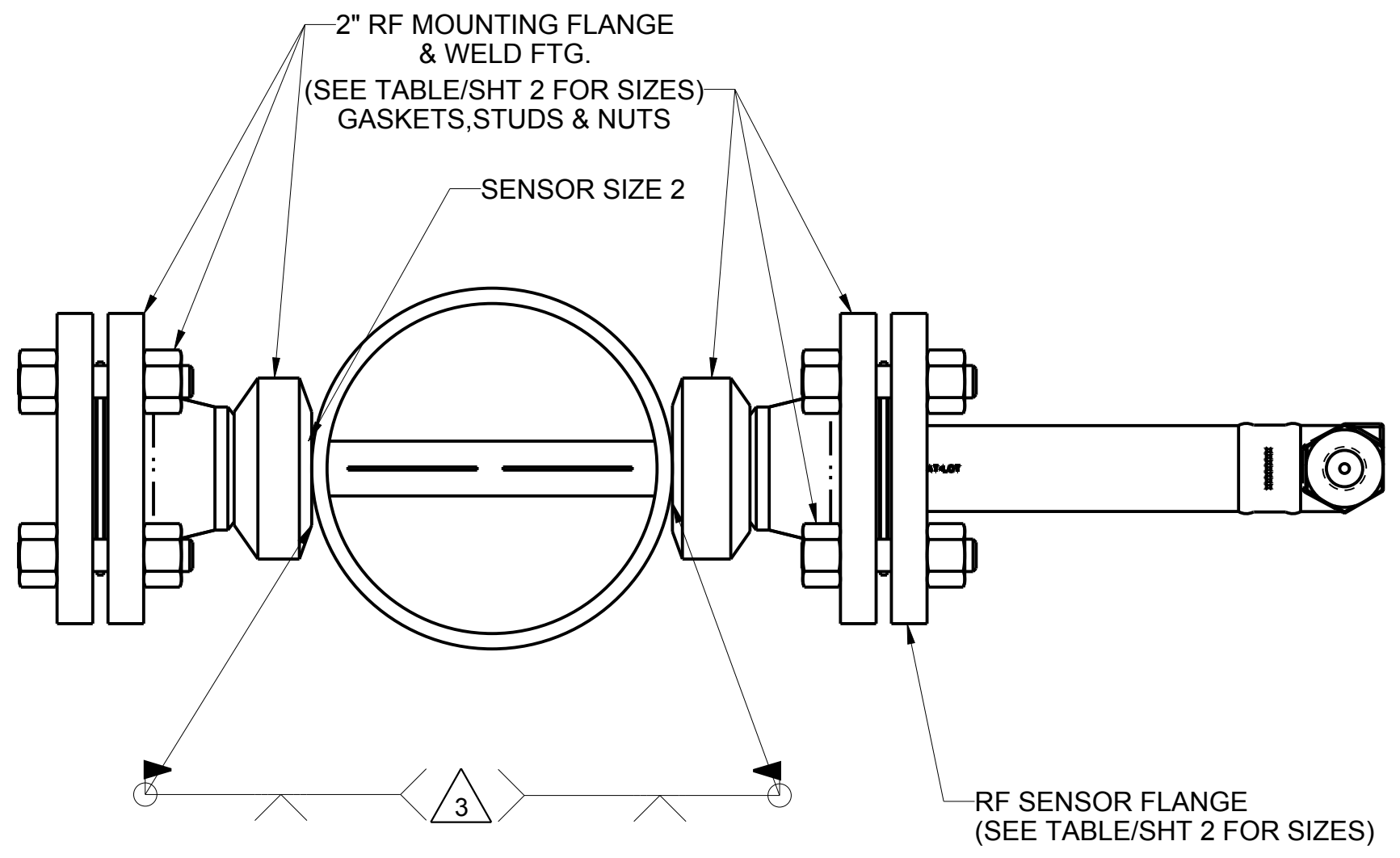
TITLE DIMENSION DRAWING, MODEL 485 ANNUBAR FLOWMETER (3051SFA, 3051CFA 2051CFA,3095MFA) SENSOR SIZE 2 FLANGED 150# - 2500# ANSI

DR. SGE 07/07/15 DRAWING NO. 00485-1013

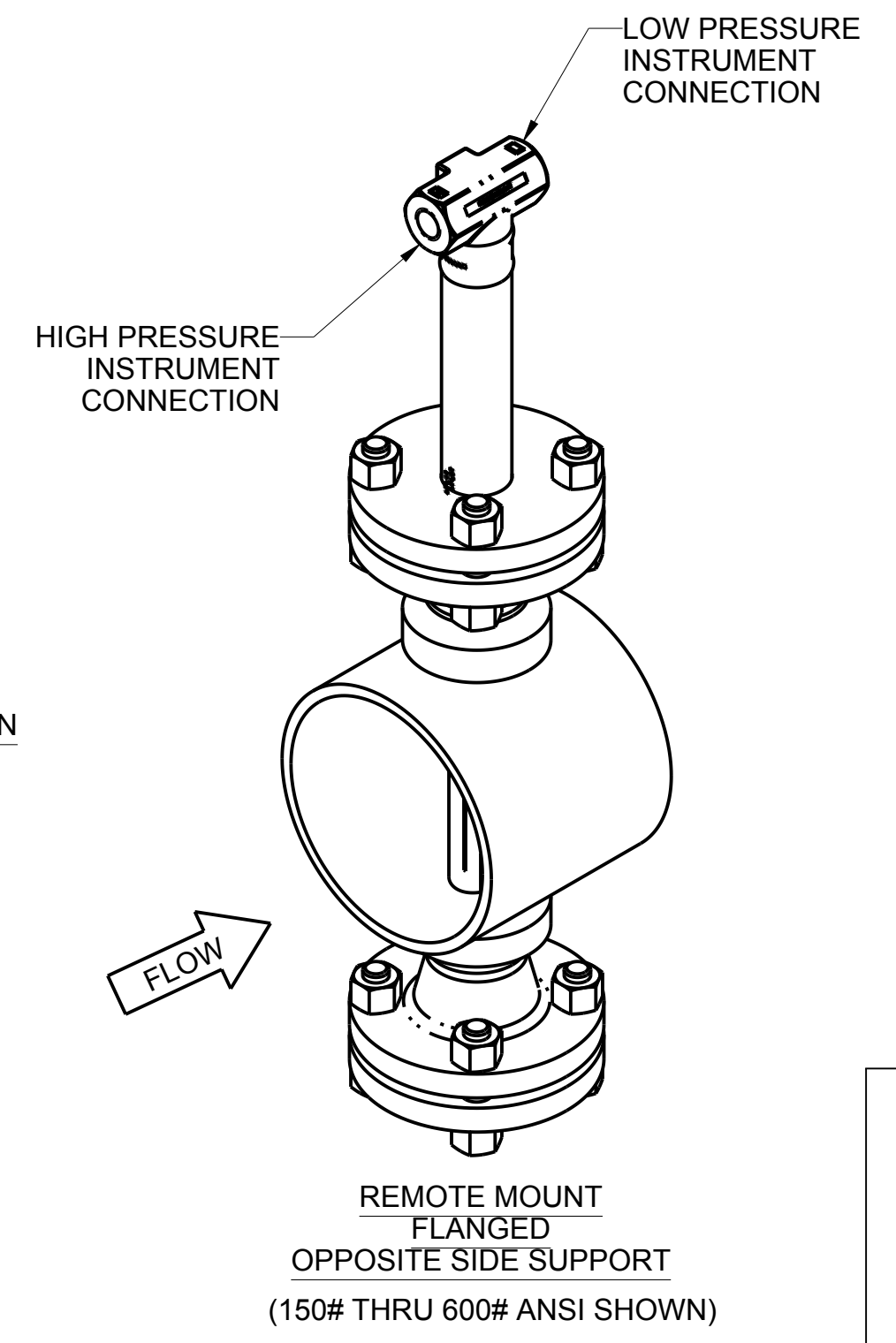
APP'D JR 07/07/15

DO NOT SCALE PRINT CAD MAINTAINED, (PRO/E) PRODUCT CODE . DOC TYPE . SHEET 3 OF 5

DRAWING NO. 00485-1013



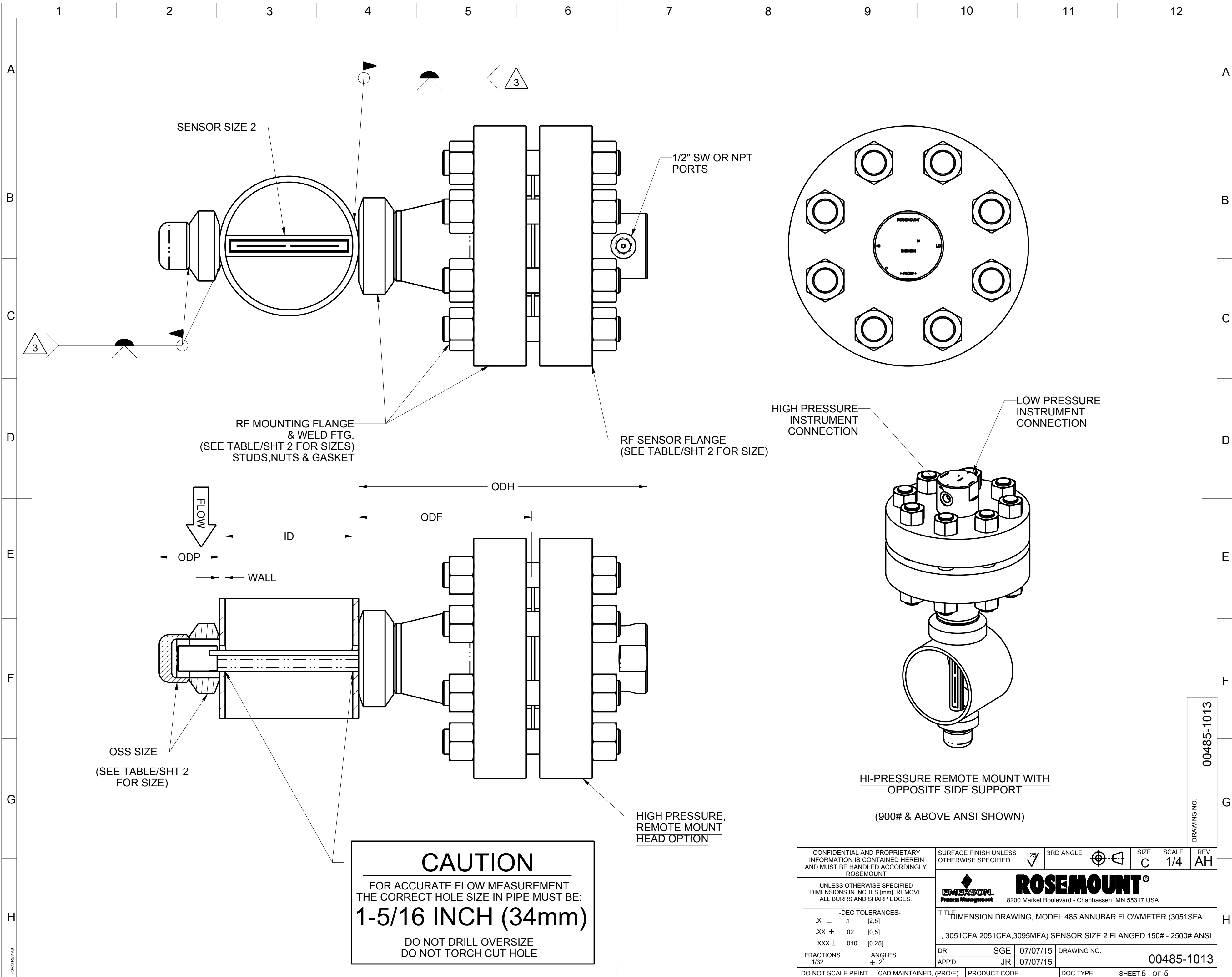
CAUTION
 FOR ACCURATE FLOW MEASUREMENT
 THE CORRECT HOLE SIZE IN PIPE MUST BE:
1-5/16 INCH (34mm)
 DO NOT DRILL OVERSIZE
 DO NOT TORCH CUT HOLE



ALSO AVAILABLE FOR HIGH PRESSURE APPLICATIONS

CONFIDENTIAL AND PROPRIETARY INFORMATION IS CONTAINED HEREIN AND MUST BE HANDLED ACCORDINGLY. ROSEMOUNT	SURFACE FINISH UNLESS OTHERWISE SPECIFIED $\sqrt{125}$	3RD ANGLE	SIZE C	SCALE 1/4	REV AH
	ROSEMOUNT® 8200 Market Boulevard - Chanhassen, MN 55317 USA				
UNLESS OTHERWISE SPECIFIED DIMENSIONS IN INCHES [mm]. REMOVE ALL BURRS AND SHARP EDGES.					
-DEC TOLERANCES- .X ± .1 [2.5] .XX ± .02 [0.5] .XXX ± .010 [0.25]					
FRACTIONS ± 1/32 ANGLES ± 2°					
TITLE DIMENSION DRAWING, MODEL 485 ANNUBAR FLOWMETER (3051SFA, 3051CFA 2051CFA, 3095MFA) SENSOR SIZE 2 FLANGED 150# - 2500# ANSI		DR. SGE 07/07/15 DRAWING NO. 00485-1013 APP'D JR 07/07/15			
DO NOT SCALE PRINT CAD MAINTAINED, (PRO/E) PRODUCT CODE . DOC TYPE . SHEET 4 OF 5					

DRAWING NO. 00485-1013



CAUTION

FOR ACCURATE FLOW MEASUREMENT
THE CORRECT HOLE SIZE IN PIPE MUST BE:
1-5/16 INCH (34mm)
DO NOT DRILL OVERSIZE
DO NOT TORCH CUT HOLE

CONFIDENTIAL AND PROPRIETARY INFORMATION IS CONTAINED HEREIN AND MUST BE HANDLED ACCORDINGLY. ROSEMOUNT	SURFACE FINISH UNLESS OTHERWISE SPECIFIED	125	3RD ANGLE		SIZE C	SCALE 1/4	REV AH
UNLESS OTHERWISE SPECIFIED DIMENSIONS IN INCHES (mm). REMOVE ALL BURRS AND SHARP EDGES.	EMERSON Process Management ROSEMOUNT 8200 Market Boulevard - Chanhassen, MN 55317 USA						
-DEC TOLERANCES-	TITLE DIMENSION DRAWING, MODEL 485 ANNUBAR FLOWMETER (3051SFA , 3051CFA 2051CFA, 3095MFA) SENSOR SIZE 2 FLANGED 150# - 2500# ANSI						
.X ± .1 [2.5]	DR. SGE		07/07/15		DRAWING NO.		
.XX ± .02 [0.5]	APPD. JR		07/07/15		00485-1013		
.XXX ± .010 [0.25]	FRACTIONS ± 1/32		ANGLES ± 2'		DO NOT SCALE PRINT		
CAD MAINTAINED, (PRO/E)		PRODUCT CODE		DOC TYPE		SHEET 5 OF 5	

DRAWING NO. 00485-1013