

EMT Angle Compression Connectors

NEC/CEC:
Listed for Ordinary Locations

Features

- Concretetight.
- Male hub threads NPS
- Available with insulated throat

Standard Materials

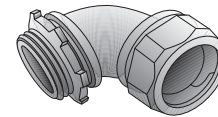
- Malleable iron

Standard Finishes

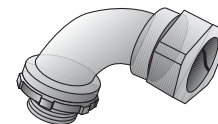
- Zinc plated

NEC/CEC Certifications and Compliances

- UL Standard: ANSI/UL 514B
- UL Listed: E-14895
- CSA Standard: C22.2 No. 18
- CSA Certified: 9795

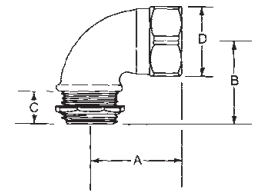


Type 8050W

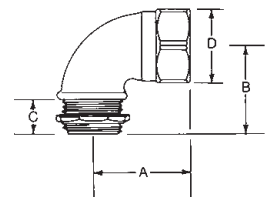


Type 3050W

Trade Size (Inches)	Dimensions in Millimeters (Inches)					Catalog Number	Insulated Throat Catalog Number
	A	B	C	D	Turning Radius		
1/2	31.75 (1.25)	28.70 (1.13)	12.70 (0.5)	28.70 (1.13)	16.00 (0.63)	8050W	8050WT
3/4	44.45 (1.75)	36.58 (1.44)	14.22 (0.56)	35.05 (1.38)	17.53 (0.69)	8075W	8075WT
1	44.45 (1.75)	41.40 (1.63)	12.70 (0.50)	44.45 (1.75)	26.92 (1.06)	8100W	—
1-1/4	57.15 (2.25)	54.10 (2.13)	14.22 (0.56)	55.63 (2.19)	28.70 (1.13)	8125W	—
1-1/2	63.50 (2.50)	60.45 (2.38)	14.22 (0.56)	63.50 (2.50)	41.40 (1.63)	8150W	—
2	77.72 (3.06)	74.68 (2.94)	17.53 (0.69)	77.72 (3.06)	63.50 (2.50)	8200W	—



Trade Size (Inches)	Dimensions in Millimeters (Inches)					Wire Radius	Catalog Number
	A	B	C	D			
1/2	50.80 (2.00)	49.28 (1.94)	12.70 (0.50)	28.70 (1.13)	31.75 (1.25)	3050W	
3/4	61.98 (2.44)	61.98 (2.44)	16.00 (0.63)	35.05 (1.38)	36.58 (1.44)	3075W	
1	66.80 (2.63)	65.02 (2.56)	17.53 (0.69)	44.45 (1.75)	47.75 (1.88)	3100W	
1-1/4	77.72 (3.06)	76.20 (3.00)	42.93 (1.69)	55.63 (2.19)	57.15 (2.25)	3125W	



EMT Angle Compression Connectors

NEC/CEC:
Rated for Ordinary Locations

Features

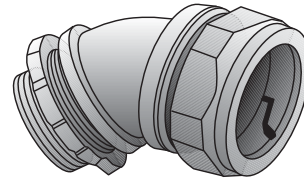
- Male hub threads NPS.

Standard Materials

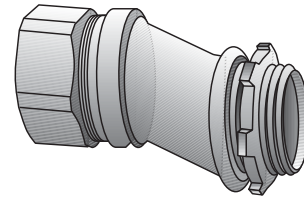
- Malleable iron

Standard Finishes

- Zinc plated

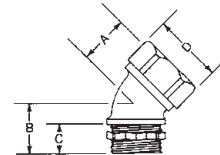


Type 8E

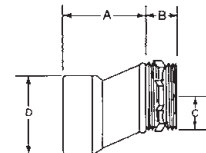


Type OEG

Trade Size (Inches)	Dimensions in Millimeters (Inches)				Catalog Number
	A	B	Offset C	D	
45° Short Angle Elbows					
1/2	23.88 (0.94)	23.88 (0.94)	12.70 (0.5)	28.70 (1.13)	8E-450
3/4	20.57 (0.81)	31.75 (1.25)	14.22 (0.56)	35.05 (1.38)	8E-475
1	22.35 (0.88)	36.58 (1.44)	16.00 (0.63)	44.45 (1.75)	8E-4100



Trade Size (Inches)	Dimensions in Millimeters (Inches)				Catalog Number
	A	B	Offset C	D	
Offset Connectors for EMT					
1/2	31.75 (1.25)	12.70 (0.50)	9.65 (0.38)	28.70 (1.13)	OEG-50
3/4	33.27 (1.31)	12.70 (0.50)	9.65 (0.38)	35.05 (1.38)	OEG-75
1	33.27 (1.31)	14.22 (0.56)	9.65 (0.38)	44.45 (1.75)	OEG-100



EMT Angle Compression Connectors

NEC/CEC:
Rated for Ordinary Locations

Application

- Connectors are used to secure and terminate steel EMT to knockouts and concrete tight box.

Features

- Compact design.
- Quick installations.

Material/Finish

- Steel/malleable iron - Zinc electroplated

NEC Certifications and Compliances

- UL Standard: 514B
- UL Listed: E-14895
- NEMA: FB-1



Type TWLL



Type TWL

	Trade Size (Inches)	Dimensions in Millimeters (Inches)			Weight per 100 kg (lb)	Catalog Number
		A	B	C		
Gland Compression 90° Long Connectors – Concrete Tight – Malleable/Steel Nut						
	1/2	47.8 (1.88)	52.3 (2.06)	15.0 (0.59)	14.51 (32.00)	TWLL-50L
	3/4	55.6 (2.19)	62.0 (2.44)	11.2 (0.44)	22.68 (50.00)	TWLL-75L
	1	65.8 (2.59)	76.2 (3.00)	11.2 (0.44)	47.63 (105.00)	TWLL-100L
	1-1/4	71.4 (2.81)	84.1 (3.31)	14.2 (0.56)	61.69 (136.00)	TWLL-125L
Gland Compression 90° Short Connectors – Concrete Tight – Malleable/Steel Nut						
	1/2	31.0 (1.22)	33.3 (1.31)	10.4 (0.41)	9.07 (20.00)	TWL-50L
	3/4	33.3 (1.31)	36.6 (1.44)	11.2 (0.44)	13.61 (30.00)	TWL-75L
	1	41.4 (1.63)	39.6 (1.56)	11.2 (0.44)	24.04 (53.00)	TWL-100L

