

# Valves, controls and system protectors for R-744



Efficiency and reliability in CO<sub>2</sub> applications

Improving system architecture and using a natural refrigerant can significantly reduce the carbon footprint of an installation. Given the growing environmental concerns, the adoption of new technologies by the refrigeration industry accelerates. Emerson Climate Technologies has developed a new range of electronic and mechanical controls fulfilling the requirements of all common CO<sub>2</sub> applications:

- Hybrid systems
- Secondary loop (pumped CO<sub>2</sub>)
- Cascade systems
- Booster systems

Product group	Product overview	Product type	MWP rating (psig)
Valves	Transcritical electrical control stepper valves with universal drive module EXD-U01	CX series (CX4-7)	1740
	Electrical control stepper motor valves with superheat controller EC3-X32, EC3-X33, -D72	EX4-7	870
		EX 8	650
	Electrical control pulse width valves with display case/cold room controller EC2	EX2	500
	Pilot-operated, 2-way, normally closed solenoid valve	200RD	680
	Normally closed magnetic check valve	ACK	680
Controls	Refrigeration ball valves	BVE/BVS	650
	Oil separator, oil reservoirs +	A-WZ, A-WC, AOR	680
	Oil level control	OMB	870
	Mini pressure control	PSC	696
	Pressure transmitters	PT5-30M	870
PT5-50M		1450	
Valves/superheat controllers	Electronic control stepper motor valve, XEV controller, pressure transducer, temperature sensor, transformer, all associated cables	XEV kit	870 650
		System protectors	Hermetic driers
SFD, CSFD, ASD, ASK-HH, ASF	500		
Take-apart shells +	STAS*T		680
Moisture indicators	HMI, IHL		680
	AMI	650	

Note: See catalog for capacity information + Future Offering



CX valve with EXD-U00 controller



EX valve with EC3-X33 controller



EX2 valve with EC2 controller



PT5 pressure transmitter

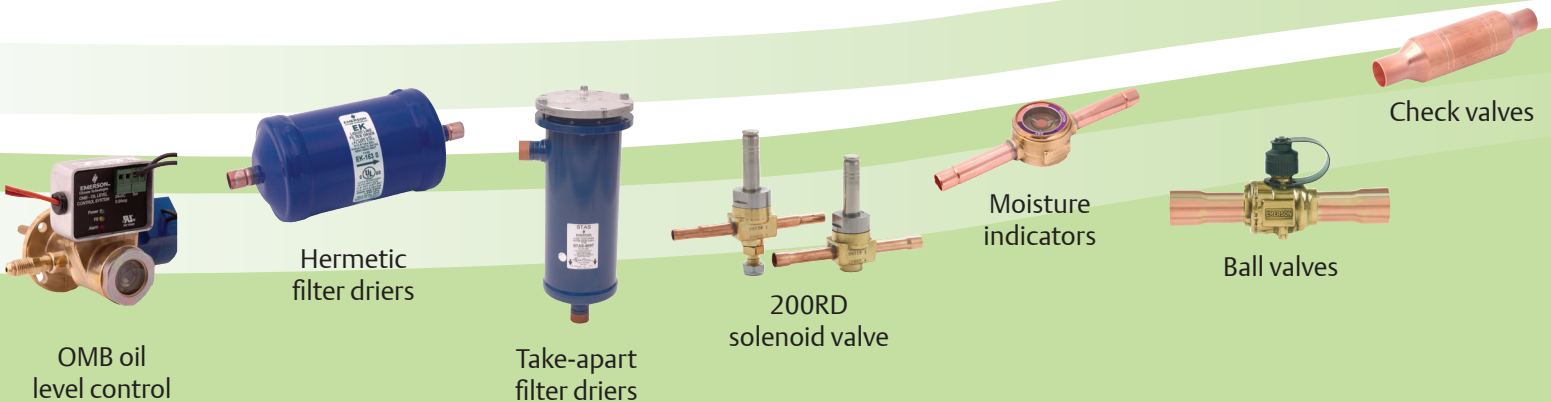
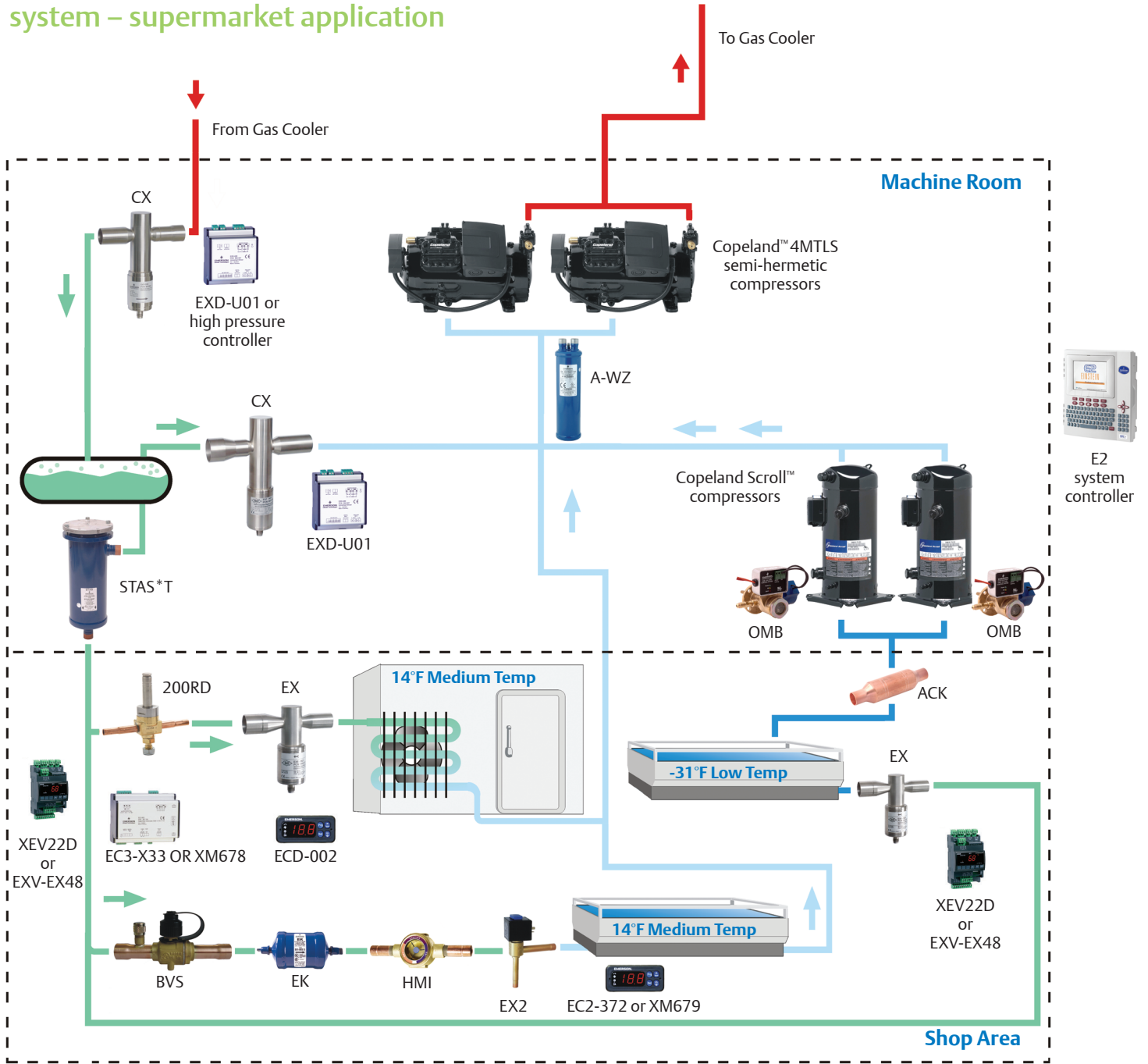


A-WZ oil separator



XEV kit

# R-744 transcritical/subcritical booster system – supermarket application



EmersonClimate.com

[EmersonClimate.com/FlowControls](http://EmersonClimate.com/FlowControls)

2013FC-68 R1 (1/15) Emerson, Copeland Discus and Copeland Scroll are trademarks of Emerson Electric Co. or one of its affiliated companies. ©2015 Emerson Climate Technologies, Inc. All rights reserved.

EMERSON. CONSIDER IT SOLVED.™