

Reliable Valve & Actuation Solutions - Backed by Trusted Experts



Valves, Actuators and Regulators

One strategic partner leveraging all final control products and services to achieve enhanced business outcomes.



Empower Your Operations with Emerson

For those who design, specify, build, operate and maintain facilities in industries such as energy, power, chemical, life sciences, and mining, Emerson offers a trusted portfolio of valve solutions. Our commitment to productivity, reliability, safety and sustainability ensures your success today and tomorrow. Through unmatched expertise, cutting-edge technologies, and a global service network, Emerson is your partner in achieving operational excellence.

Our Expertise at Your Fingertips

Control, Regulate, and Isolate with Confidence

From enhancing plant performance to ensuring process integrity, our solutions are designed to tackle your toughest challenges. With Emerson, you gain access to a broad range of trusted brands, including Fisher™, Vanessa™, Biffi™, Bettis™, Anderson Greenwood™, AEV™, Crosby™, Clarkson™, Keystone™, KTM™, Sempell™, Tartarini™, and Yarway™, delivering:

- **Exceptional Performance:** Advanced designs tailored to your application needs.
- **Unparalleled Reliability:** Solutions that optimize uptime and safety.
- **Comprehensive Services:** Expertise to maximize your plant's lifecycle efficiency.



FISHER™

KEYSTONE™

KTM™

VANESSA™





Strategic Collaboration for Optimal Results

From Project Planning to Operational Excellence

Achieving efficient project certainty starts with a fresh approach. Emerson delivers top-quality products, services, and expert resources to optimize designs for maximum performance and value. Our industry experts work with you to ensure project specifications and inspection protocols meet rigorous quality standards and KPIs, saving time and reducing costly errors.

With our Operational Excellence methodology, you gain actionable insights to minimize risks, control operational costs, and increase uptime. This enables you to keep maintenance on schedule and achieve consistent operational performance. By partnering with Emerson, you unlock unparalleled expertise, proven strategies, and cutting-edge technologies—empowering you to meet your goals faster and more efficiently while driving long-term value for your business.





Emerson Sales & Operations Locations

Austria - AT

Wiener Neudorf

Belgium - BE

Diegem
Verviers

Czech Republic - CZ

Prague

France - FR

Armentières
Cergy
Cernay
Rungis

Germany - DE

Korschenbroich
Langenfeld
Mönchengladbach

Hungary - HU

Budapest
Székesfehérvár

Ireland - IE

Cork

Italy - IT

Bologna
Fiorenzuola d'Arda
Lucca
Lugagnano Val d'Arda
Seregno

Kazakhstan - KZ

Almaty
Astana
Atyrau

Lithuania - LT

Klaipeda

Netherlands - NL

Ede
Rijswijk

Norway - NO

Kokstad
Skui

Poland - PL

Katowice
Warsaw

Portugal - PT

Lisbon

Romania - RO

Bucharest
Cluj

Switzerland - CH

Baar

Spain - ES

Cartagena
Cornella de Llobregat
Madrid

Turkey - TK

Istanbul

Ukraine - UA

Kyiv

United Kingdom - UK

Aberdeen
Bredbury
Leicester
Manchester
Peterlee

Products

Control Valves

Fisher™
Globe Valves



Fisher™
Three Way Valves



Fisher™
Segmented Ball Valves



Fisher™
Butterfly Valves



Fisher™
Ball Valves



Fisher™
Excentric Plug Valves



Control Valves – Severe Service

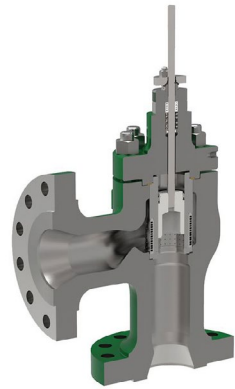
Fisher™
Dirty service



Fisher™
Outgassing



Fisher™
Cavitation



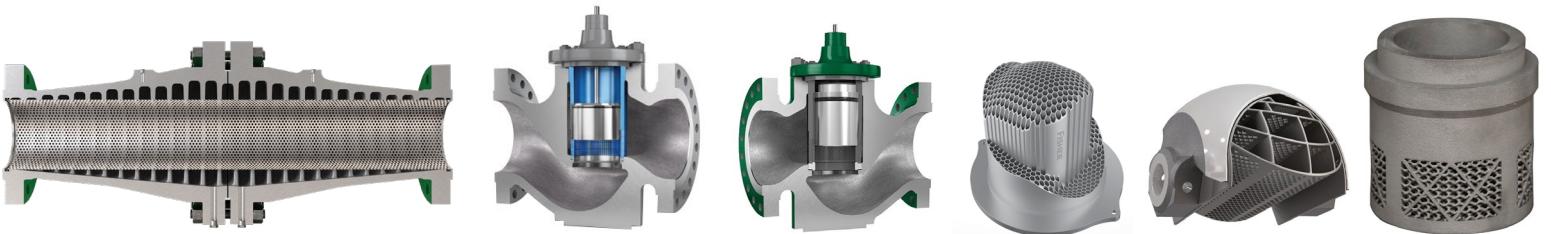
Fisher™
Anti-Surge Valves



Fisher™
Cryogenic



Fisher™ Whisper™



Instruments

Fisher™ FIELDVUE™
Controllers and Positioners

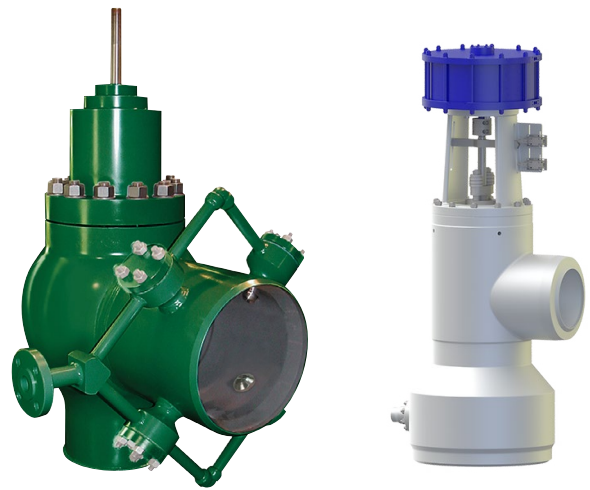


Process and Steam Solutions

**Fisher™
Desuperheaters**



**Fisher™ Sempell™
Turbine Bypass Valves**



**Sempell™
Steam Isolation Valves**



**Sempell™
High Pressure Pilot
Operated
Safety Valves**



**Sempell™
Gate Valves**



**Yarway™ Sempell™
Globe Valves**



**Yarway™ Spence™
Pressure Regulators**

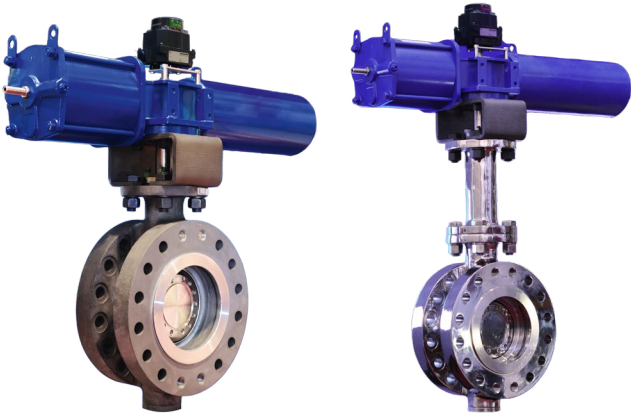


**Yarway™
Globe/Wellbond Valves**

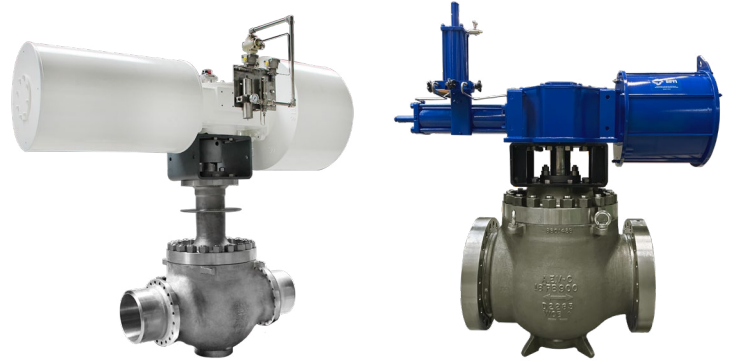


Isolation Valves

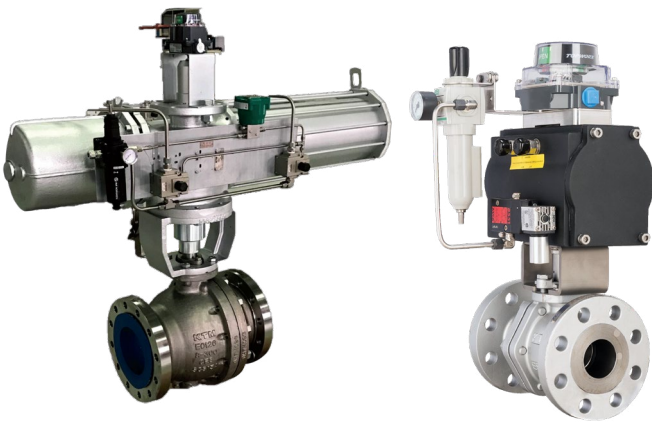
**Vanessa™
Triple Offset Valves**



**AEV™
C-Ball Valves**



**KTM™ K-Ball™
Ball Valves**



**Keystone™ Neotecha™
Butterfly Valves**



**Clarkson™
Knife Gate Valves**



**Neotecha™
Lined Products**



**Keystone™
Check Valves**

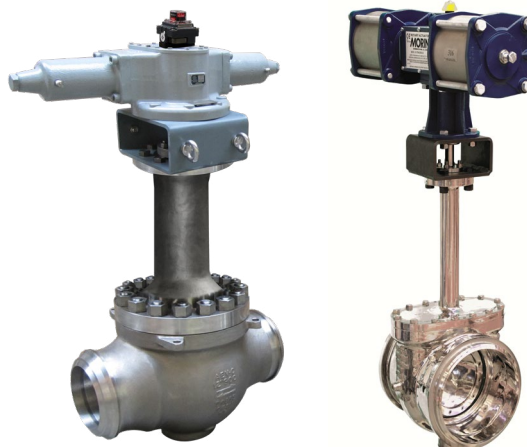


Isolation Valves - Critical Applications

**AEV™ Vanessa™
Emergency Shutdown**



**AEV™ Vanessa™
Cryogenic Isolation Valves**



**AEV™ KTM™ Vanessa™
Critical Service**



Actuation

Bettis™ Biffi™ Pneumatic Actuators



Bettis™ Biffi™ Shafer™ Hydraulic, Electro-Hydraulic & Gas-Powered Actuators



Bettis™ Biffi™ Electric Actuators



Fisher™ Sliding-Stem Actuators



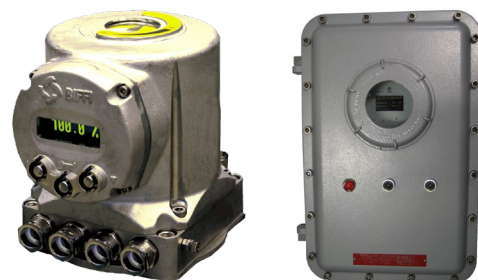
Fisher™ Rotary Actuators



Gearboxes & Manual Overrides

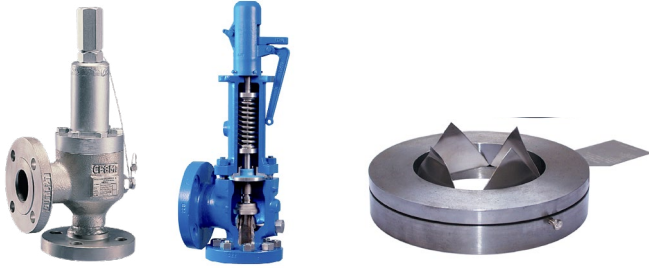


Biffi™ Controls & Instruments



Pressure Regulators & PRV - Safety Valves

Anderson Greenwood™ Crosby™ Kunkle™
Sempell™ Marston™
Spring Loaded Safety Valves &
Rupture Discs



Anderson Greenwood™
High Pressure Pilot Operated
Safety Valves



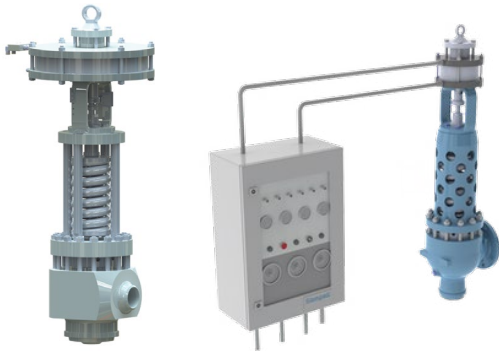
Anderson Greenwood™
Low Pressure Pilot Operated
Safety Valves



Anderson Greenwood™
Safety Selector Valves



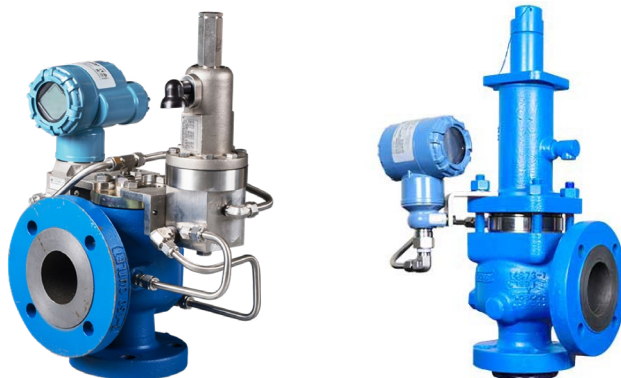
Sempell™
Electro Pneumatic
Safety Valves



Anderson Greenwood™ Fisher™
Varec™ Enardo™
Tank Protection and Flame Arrestor

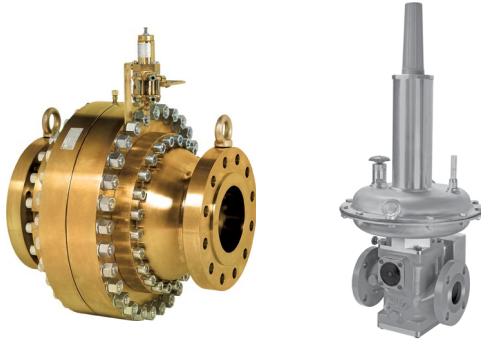


Anderson Greenwood™ Crosby™
Safety Valve with Full Monitoring

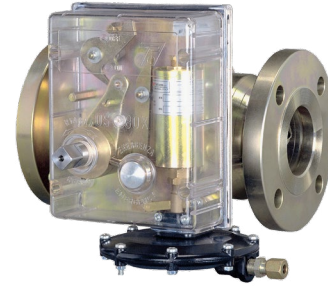


Pressure Regulators - Natural Gas and Hydrogen

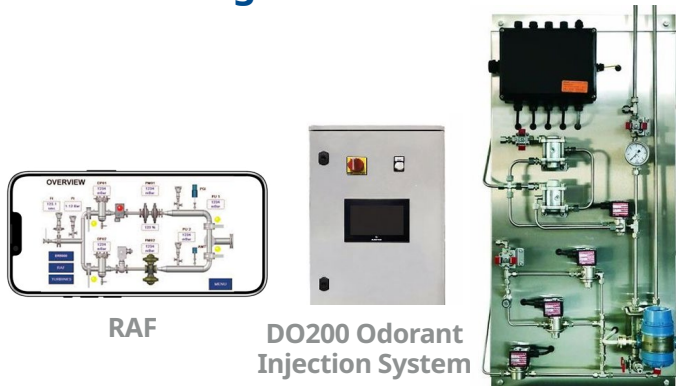
Tartarini™ Fisher™ Pressure Regulators



Tartarini™ Fisher™ Slam Shut Valves



Digital Solutions



Sustainability: Integrated Solutions for Biomethane and 100% H₂ & H₂/NG blending applications



Pressure Regulators - Industrial

Fisher™ Cash Valve™ Pressure Regulators



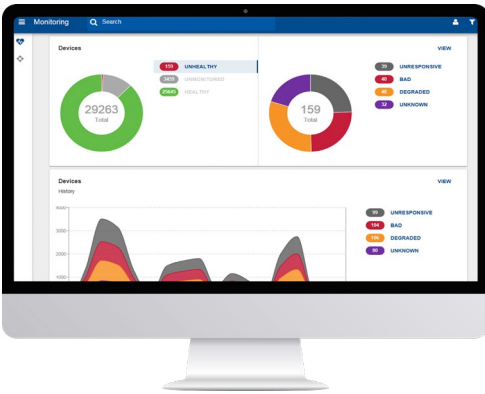
Fisher™ Tank Blanketing



Digital Solutions

Analytics Software

AMSTM Device Manager



DCMlink Software



Fisher™ ValveLink™ Software



Plantweb Insight™

Steam Traps



Pressure Relief Devices



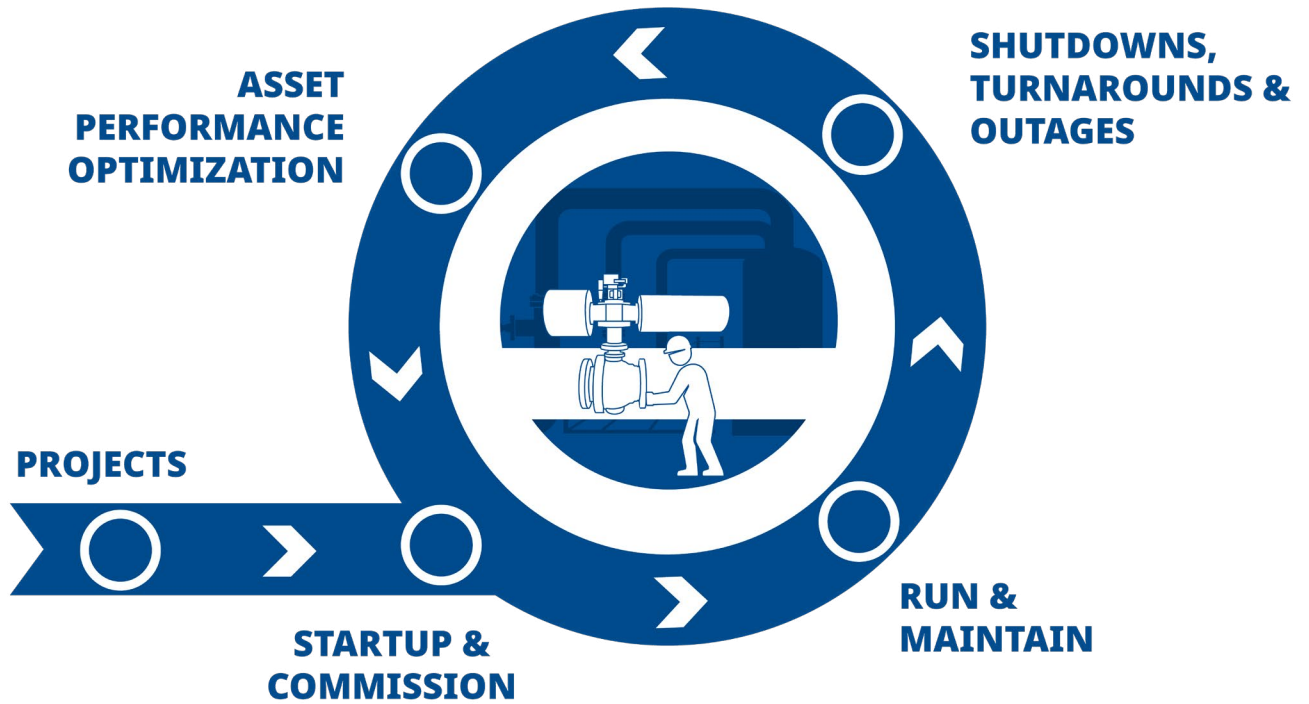
Valve Health Application





Valve Services

Strategic support throughout the lifecycle of your plant



Safe & On-Time Startup

A smooth handover from construction to startup helps reduce complexity and minimize chances for valve damage and cost overruns. Our compliance management testing and verification tools, asset planning and tracking, OEM certified technicians, and application and safety experts help you minimize the risks and costs associated with the startup and commissioning stage.

Run Your Plant Reliably

A proper maintenance strategy can optimize spend and help reduce your total cost of ownership. Utilizing installed base analytics, diagnostics and risk-based inspections, and proper inventory management practices, help you to prioritize and reduce inefficiencies as your plant is in production.

Complete Outages On Time & In Budget

Our proven outage planning and execution process, paired with our technology and efficiency tools. Can help you make data-driven decisions and optimize your maintenance scope. Digital tools that gather and store asset health assessments, quick parts and assembly distribution, and onsite mobile service centers help to ensure outages are completed on time and within budget.

Minimize Unplanned Failures with Asset Performance Optimization

Transition toward asset management with predictive diagnostics to enable proactive maintenance planning to help minimize unplanned failures and increase uptime. Remote valve condition monitoring services allow for critical asset monitoring and predictive data analysis allow for data-driven planning and upgrades.



Optimizing productivity, reliability, safety, and sustainability—today and tomorrow



Emerson Europe Headquarters

Neuhofstrasse 19a
Baar, 6340
Switzerland
T +41 41 768 61 11



[Emerson.com](https://www.emerson.com)



[LinkedIn.com/showcase/Emerson-Final-Control](https://www.linkedin.com/showcase/Emerson-Final-Control)



[X.com/EMR_Automation](https://www.x.com/EMR_Automation)

D353144X012 © 2025 Emerson. All rights reserved.
AMS, Anderson Greenwood, AEV, Neotecha, Clarkson, K-Ball, Biffi, Bettis, Cash Valve, Enardo, Fisher, Kunkle, Marston, Sempell, Crosby, Vanessa, Keystone, Tartarini, Varec, and Shafer are each a mark of an entity in the Emerson family of businesses. The Emerson logo is a trademark and service mark of Emerson Electric Co. All other marks are the property of their respective owners.

Neither Emerson nor any of its affiliated entities assume responsibility for the selection, use or maintenance of any product. Responsibility for proper selection, use, and maintenance of any product remains solely with the purchaser and end user.

The contents of this publication are presented for informational purposes only, and while every effort has been made to ensure their accuracy, they are not to be construed as warranties or guarantees, express or implied, regarding the products or services described herein or their use or applicability. All sales are governed by our terms and conditions, which are available upon request. We reserve the right to modify or improve the designs or specifications of such products at any time without notice.

