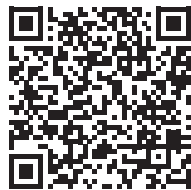




AMS Wireless Vibration Monitor QUICK USER GUIDE

This document is intended to provide basic information about installation and configuration as well as information regarding safety and approvals. For more information, please reference the User Guide (P/N MHM-97927-PBF) on the Emerson website. Scan the QR code to go to all related product documentation.



Contact Us
www.emerson.com/contactus

©2025, Emerson. All rights reserved.

The Emerson logo is a trademark and service mark of Emerson Electric Co. AMS is a mark of one of the Emerson family of companies. All other marks are the property of their respective owners.

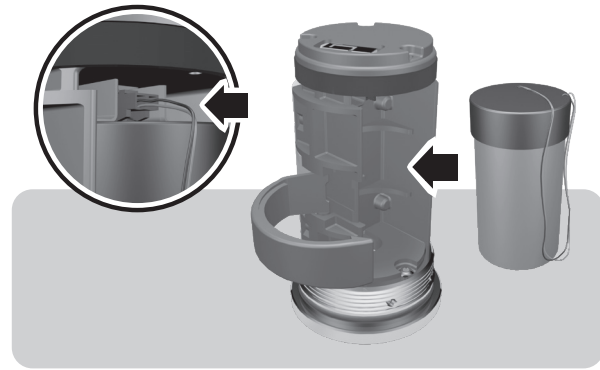
The contents of this publication are presented for informational purposes only, and while diligent efforts were made to ensure their accuracy, they are not to be construed as warranties or guarantees, express or implied, regarding the products or services described herein or their use or applicability. All sales are governed by our terms and conditions, which are available on request. We reserve the right to modify or improve the designs or specifications of our products at any time without notice.



Device Preparation

For safety reasons, the device is shipped with the battery disconnected. When you are ready to configure the device, follow the steps below to reconnect the battery.

1. Use your hands to unscrew and remove the blue cover.
2. Remove the battery with the pull tab.
3. Locate the battery connector and plug it into the socket on the device as shown.



4. Replace the battery. Tuck the wires against the battery and lock them into place.

Quick Configuration

1. Locate the terminals for the communication port on the opposite side of the device.
2. Connect a configuration device to the terminals such as a computer running AMS Device Manager with a HART™ modem or an AMS Trex Field Communicator (shown below).



3. Follow the onscreen instructions to configure the device. It is advisable to use the option for Guided Setup. Individual parameters can be easily customized later using AMS Device Manager after the device has joined the wireless network.
4. After configuring the device, make sure to disconnect the battery before replacing the cover. This not only conserves battery power, but the battery will need to be removed again when using the recommended field installation method.

Field Installation

1. To stud mount the device (recommended), prepare the machine surface using a spot face tool. Then drill and tap a 1/4-28" hole 0.25" (6.35mm) deep. Alternately, a mounting pad with 1/4-28" thread can be glued in place using epoxy. (Consult the User Guide for additional mounting options and instructions.)
2. With the cover still on the device, use your hand to loosely screw the device into the threaded hole. Do not tighten.
3. Remove the cover and battery.
4. Insert a small screwdriver through the guide hole in the base of the unit (shown below) and use this to hold the device in the desired orientation.



5. While maintaining the device orientation, use a 3/16" ball driver to tighten the captive screw in the center of the base (shown above) to 2-5 ft-lb.
6. Then connect and replace the battery.
7. Use your hand to replace and tighten the cover.

Shipping Considerations

Contact Emerson Product Support to obtain a Return Materials Authorization (RMA) number and receive additional instructions.

Primary lithium batteries are regulated in transportation by the U.S. Department of Transportation, and are also covered by IATA (International Air Transport Association), ICAO (International Civil Aviation Organization), and ADR (European Ground Transportation of Dangerous Goods).

It is the responsibility of the shipper to ensure compliance with these or any other local requirements. Please consult current regulations and requirements before shipping.

Product Certifications

The AMS Wireless Vibration Monitor has a number of certifications and approvals including CE, FCC, ISED, RED, CSA, and ATEX. For a complete list of product certifications, see <http://www.emerson.com/AMSVibrationMonitor>.

Safety Information

For personal and system safety, and for optimum product performance, care should be given to read and understand the user documentation before installing, using, or maintaining this device. For more information, see the AMS Wireless Vibration Monitor User Guide.

For questions, contact customer support:

Inside US (Toll free): 1-800-999-9307 or 1-800-654-7768

International: 1-(952) 906-8888

E-mail: hm.custserv@emerson.com

Battery Information

The AMS Wireless Vibration Monitor uses a standard battery. For safety reasons, however, the unit was shipped to you with the battery disconnected. You will need to connect the battery before configuring and installing the device.

Replacing the Battery

The battery may be replaced in hazardous locations. Replace the battery only with Tadiran Part Number TL-4920/VE or Emerson Part Number A0702PPU. Follow the instructions in the User Guide for replacing the battery.

Installation Considerations

When choosing an installation location and position, consider the need for access to the device. For best overall performance, the device should be installed vertically. If it is necessary to install the device horizontally pay special attention to the network arrangement.

Installation in Hazardous Areas

The device is covered by a hazardous area rating. It is the responsibility of the user to verify that the device has the necessary approvals required for the intended area of use.

Warning: Installation in an explosive environment must be in accordance with the appropriate local, national, and international standards, codes, and practices. Please review this document for any restrictions associated with safe installation.

Temperature Limits

As a safety precaution, the following limits must be observed for ambient temperature:

1. Storage Temperature: -40 to 185°F / -40 to 85°C
2. Operating Temperature: -40 to 185°F / -40 to 85°C

General Notice

If the device has been exposed to a hazardous substance, a Safety Data Sheet (SDS) must be included with the returned materials. An SDS is required by law to be available to people exposed to specific hazardous substances.

