

AMS Online Prediction, Protection and Process Monitor



- DeltaV™ CHARM-based vibration and process inputs, accepting all type vibration signals
- Rugged enclosure IP66, NEMA-4X
- Advanced automated vibration monitoring and analysis with Emerson's PeakVue™ and PeakVue Plus technologies
- Built-in common asset classes with ISO 20816 default alert sets or user custom alert set
- Built-in application logics
- Antifriction bearing library
- AMS Machine Works interface for vibration waveform, spectrum and historical trend storage and analysis
- Publishes actionable asset application-based values and assessments with Health Index, current waveform and spectrum
- Easy installation at the asset
- Robust industrial design - conformal coating, shock and vibration tested
- Hazardous area rated
- Marine certification
- Wired or WiFi Ethernet deployment
- Browser-based interface
- 12 CHARM Inputs
- OPC UA server
- Modbus TCP/IP slave/server
- External Data Points to receive process data from external system (DCS or PLC) via software link
- Cyber security measures (access authentication, communication encryption, whitelisting)
- Developed in compliance with Emerson's secure product lifecycle methodology

Predictive Analytics at the Edge

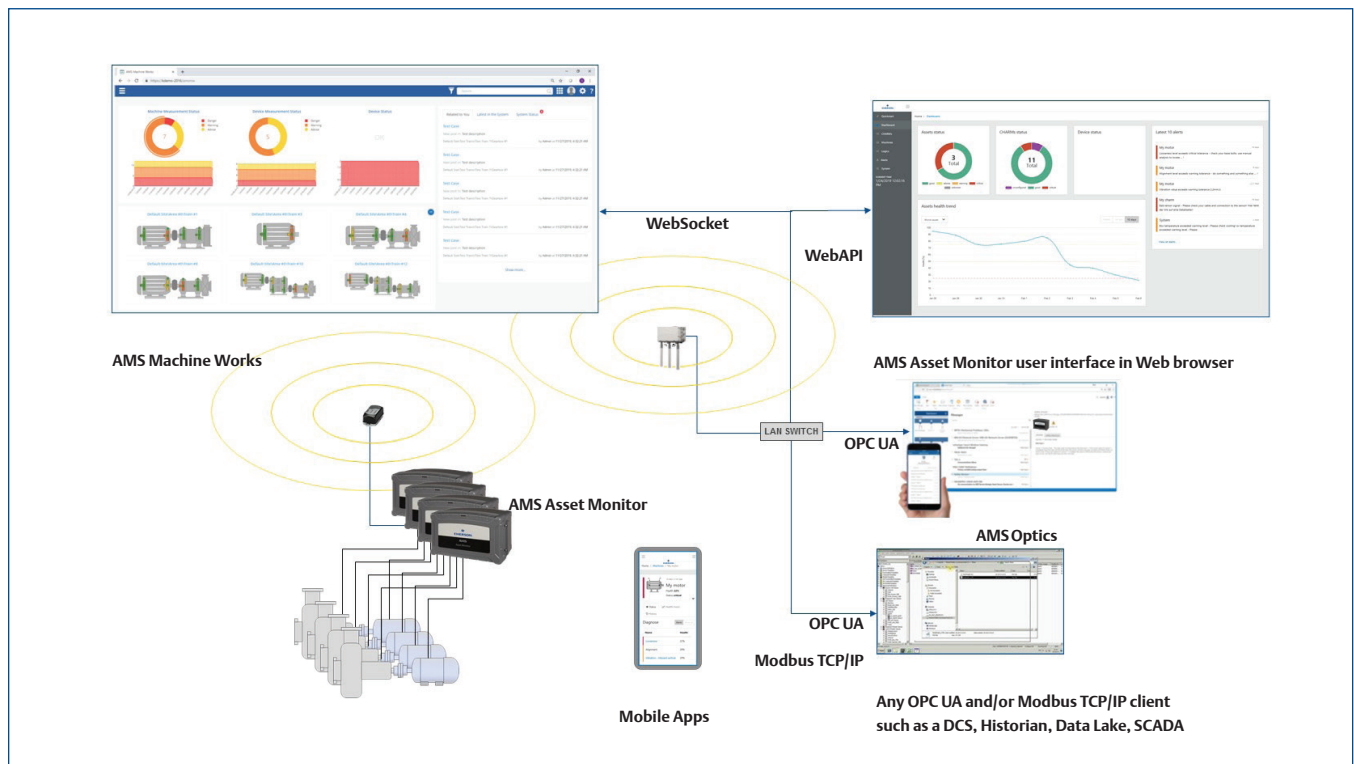
Knowing the health of your important assets is critical to achieving production and business goals. Emerson’s innovative AMS Asset Monitor provides up to the moment process and condition monitoring results with automated analytics and actionable alerts.

Until now, sensing technologies for process and condition monitoring have been siloed in different applications. Process feedback is frequently limited to a few values such as on/off state or running speed. Traditionally, condition monitoring has relied heavily on manual vibration measurements, which may be performed as infrequently as once per month or quarter. While online vibration monitoring provides continuous updates, it has been sparsely used due to cost and complexity of implementation. In all cases, the systems have focused on data collection and required manual data analysis from trained experts.

CHARM - based Reliability Monitoring

Emerson’s AMS Asset Monitor manages pervasive sensing while providing edge analytic results. It’s designed to mount at the asset, reducing cabling requirements and other installation costs. It accommodates up to 12 CHARMS including new Vibration CHARMS as well as DeltaV CHARMS for process inputs. For larger systems, multiple units can be daisy-chained together to extend asset coverage.

AMS Asset Monitor features internal predictive Rules with multiple pre-programmed application solutions for easy to understand analysis and alert reporting. Once collected and analyzed, the monitor can be setup to send overall Asset Health index and alerts to Emerson’s AMS Optics platform and detailed asset data by OPC UA. Detailed asset information is also available on a user’s mobile device or desktop thin client from the monitors internal Web served Asset Studio interface.



The AMS Optics platform provides visibility to assets across the enterprise.

Asset Health predictive Rules

AMS Asset Monitor includes the following Asset Health predictive Rules with others under development:

- Balance – detects rotor imbalance
- Alignment – detects rotor misalignment

- Looseness – detects mechanical looseness of the support
- Vane/Blade Pass – detects bladed component issues
- Flow Turbulence – detects pump cavitation or fan rotating stall
- Gear Faults – detects several types of gear defects (Tooth wear, Gear misalignment, Broken/cracked tooth with PeakVue Plus)
- Bearing – detects antifriction bearing defects at the early stage with Emerson’s PeakVue Plus methodology
- Lubrication – detects antifriction bearing lubrication issues with Emerson’s PeakVue Plus methodology
- Oil Whirl – detect sleeve bearing instability issues
- Electric Motor Problems – detects basic electric motor faults (soft foot, uneven air gap)
- Pipework vibration fatigue – helping with avoidance of vibration induces fatigue failure in process pipework

- Cyber security measures (access authentication, communication encryption, whitelisting)

Cost Effective, Simple Installation

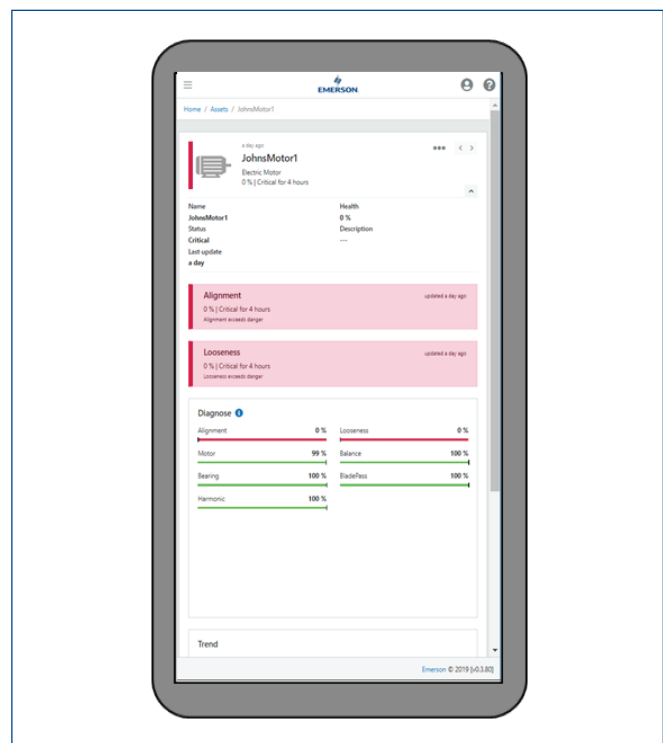
Installation of an online monitoring system can be expensive and complicated. AMS Asset Monitor is designed for easy field mounting at the asset, eliminating the need for expensive, cumbersome components including: long sensor field cables, junction boxes, barriers, cable trays, and long cable runs back to the system rack. This also eliminates the associated labor for installing these additional components.

The installation is simple: mount the monitor and power supply at the asset site. Next mount sensors on the asset (configuration templates will help with sensor location selection) and wire the sensors to the monitor. Plug the appropriate CHARM into the monitor for each input. Installation costs can be reduced further with a wireless router.

Configuration is accomplished using Emerson’s thin client interface. The monitor stores trend values internally along with the most recent spectrum and waveform data. Each application offers default alert settings for out-of-the box use without requiring specialized training. More advanced users can customize settings and alerts to their specific application needs.

AMS Asset Monitor delivers:

- Out-of-the-box easy asset monitoring using default alert limits
- DeltaV CHARM-based vibration and process inputs, accepting all type vibration signals
- Edge analytics, continuous asset condition monitoring
- Continuous analysis of process and vibration data to provide an overall asset health score (0–100%)
- Several rotating asset templates – with applicable measurement location list and preconfigured predictive Rules (fan, pump, hydrocarbon pump with additional safety-critical measurement locations, electric motor, gearbox, generic asset template)
- Supports DeltaV DO CHARM with configurable Output Logic for notification or shutdown actions
- Heat Exchanger template – with built-in diagnostics for excessive fouling and heat duty error detection
- System/sensor Health status by local LED and from mobile or desktop thin client interface
- OPC UA, Modbus TCP/IP and optional AMS Optics interface
- Complete system setup access available by secure, remote thin client interface



AMS Asset Monitor Packages Model Numbers	Product Description
SE8701-PKG1	AMS Asset Monitor package, including: SE8701T01-IM Base with 1/2-NPT Cable Gland Threading, (1) SE8701T02-IP Internal Power Supply, (12) SE4501 Std Terminal Blocks, (1) KL4501X1-BA1 Address Plug #1 (1) KL4502X1-DA1 Address Plug Terminal Block
SE8701-PKG2	AMS Asset Monitor package, including: SE8701T01-IM2 Base with 1/2-NPT Cable Gland Threading, with Offshore / Near Shore Marine Paint, (1) SE8701T02-IP Internal Power Supply, (12) SE4501 Std Terminal Blocks, (1) KL4501X1-BA1 Address Plug #1 (1) KL4502X1-DA1 Address Plug Terminal Block
Accessory Model Numbers	Product Description
SE8701UMB	Universal Mounting Bracket
SE8701-10-GLANDS-PKG	½-NPT Hazardous Rated Cable Glands, 10 pcs
SE8701-10-PLUGS-PKG	½-NPT Cable Gland Plugs, 10 pcs
SE8701-SOLA-PWR-PKG	External 24V Power Supply IP67, 3.8A @ 24V with 10 meter input and output cables, not hazardous rated
SE8701-TRACO-PWR-PKG	External 24V Power Supply IP67, 5.0A@24V with 6 meter input and output cables; ATEX Zone 2
A02101WLAN	External Wireless Router for North America CSA Class 1 Div 2
A02100WLAN	External Wireless Router for outside of North America, no hazardous ratings
SE8701-SHADE	Protection from the sun, includes canopy and pipe mounting bracket
SE8701-ANTI-TAMPER-PKG	Tamper-proof screws for the AMS Asset Monitor housing, 2 pcs
Vibration CHARMS Model Numbers	Product Description
SE8701V01-PZ	VI Piezo CHARM (2-wire accelerometers and piezo velocity ICP® sensors)
SE8701V02-VT	VI Voltage CHARM (dynamic voltage input signals in a range of ±24 V, including externally powered eddy current sensors and seismic probes)
SE8701V03-TH	VI Tach CHARM (externally powered eddy current sensors, passive magnetic sensors and Hall-effect sensors)

DeltaV Process CHARMs Model Numbers	Product Description
SE4303T03	RTD Input CHARM
SE4303T02	Thermocouple/mV Input CHARM
SE4303T01	Analog Input 4-20 mA HART CHARM
SE4301T02	Discrete Input 24VDC Low-Side sense (dry contact) CHARM
SE4302T01	Discrete Output 24VDC High-Side CHARM
CHARM Terminal Blocks Model Numbers	Product Description
SE4501	Standard Terminal Block
SE4503	Relay Output Terminal Block
SE4504	Thermocouple/mV Input Terminal Block
Spare Parts Model Numbers	Product Description
SE8701T01-IM	AMS Asset Monitor Base with Core Electronics, enclosure with 1/2-NPT Cable Gland Threading
SE8701T01-IM2	AMS Asset Monitor Base with Core Electronics, enclosure with 1/2-NPT Cable Gland Threading with Offshore / Near Shore Marine Paint
SE8701T02-IP	Internal Power Supply
KL4502X1-DA1	Address Plug Terminal Block
KL4501X1-BA1	Address Plugs #1
SE4606T04	Horizontal Channel Identifier Label/Wiring Cover, 8 pcs

Start Strong with Guardian

Get off to a strong start with Guardian. Guardian is Emerson’s digital platform for addressing the end-to-end lifecycle needs of control software and assets. The Guardian digital experience enables users to quickly connect to product support and interact with additional software and services that propel performance.

For further information, please contact your local Emerson Sales Office / representative for quotation.

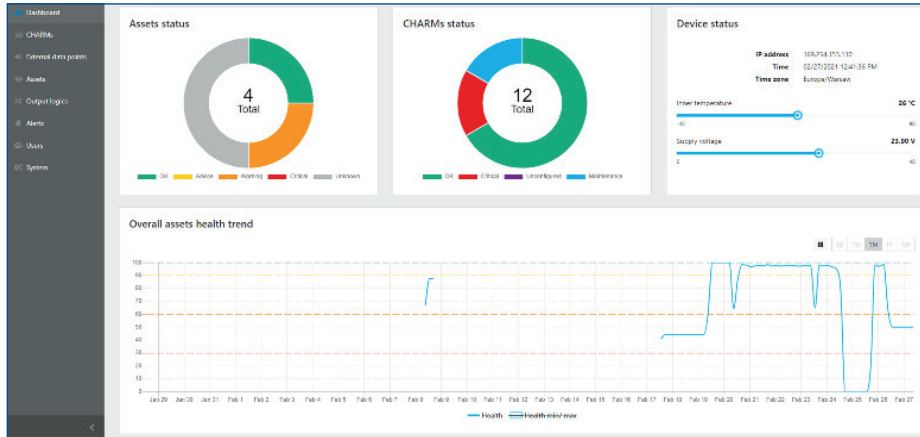
©2025, Emerson. All rights reserved.

The Emerson logo is a trademark and service mark of Emerson Electric Co. The AMS logo is a mark of one of the Emerson family of companies. All other marks are the property of their respective owners.

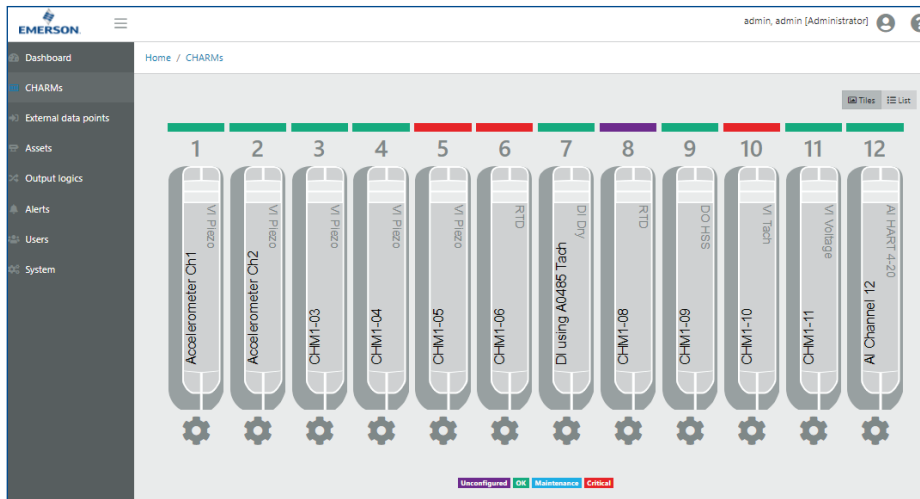
The contents of this publication are presented for informational purposes only, and while diligent efforts were made to ensure their accuracy, they are not to be construed as warranties or guarantees, express or implied, regarding the products or services described herein or their use or applicability. All sales are governed by our terms and conditions, which are available on request. We reserve the right to modify or improve the designs or specifications of our products at any time without notice.

Contact Us

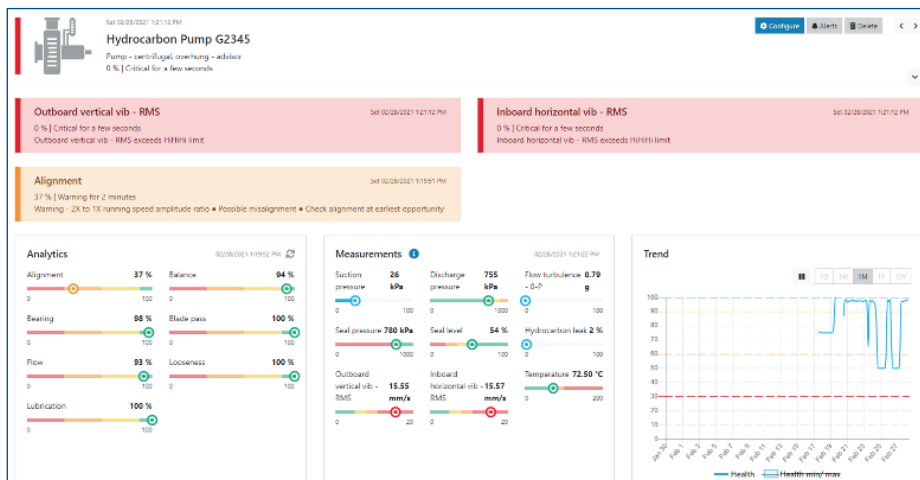
www.emerson.com/contactus



AMS Asset Monitor – Dashboard.



AMS Asset Monitor – CHARMs view.



AMS Asset Monitor – Asset health summary.