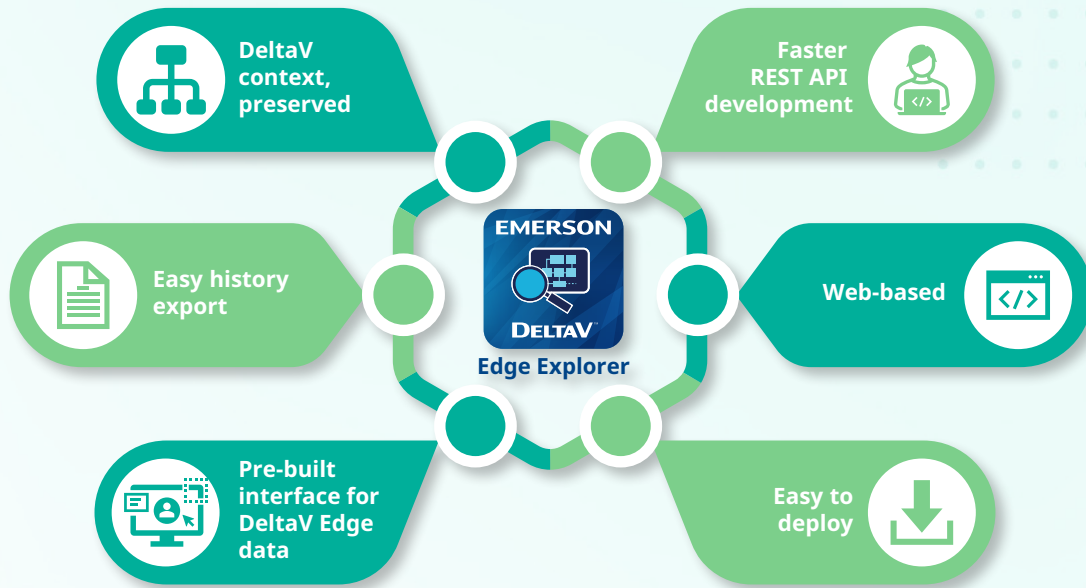


# DeltaV™ Edge Explorer

Version 1.0

**DeltaV Edge Explorer** is a browser-based application built into the DeltaV Edge stack. Available through the DeltaV Edge Application Marketplace, it provides users with an out-of-the-box solution to interact with DeltaV data directly at the Edge.

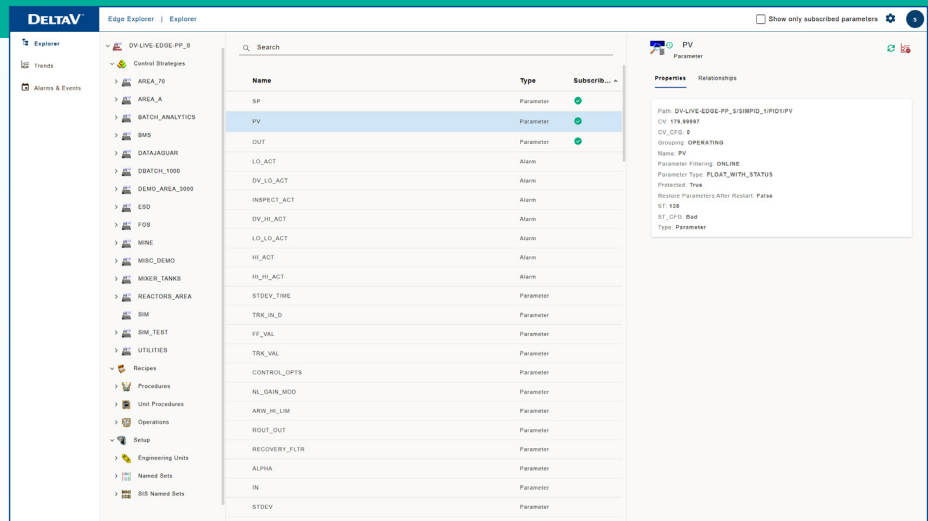
Designed for engineers, analysts, and data consumers at the site and enterprise level, Edge Explorer makes DeltaV data accessible to anyone who needs it, not only trained DeltaV operators. Local and Active Directory authentication is supported.



## EXPLORER

### Navigate DeltaV data the way you already know it

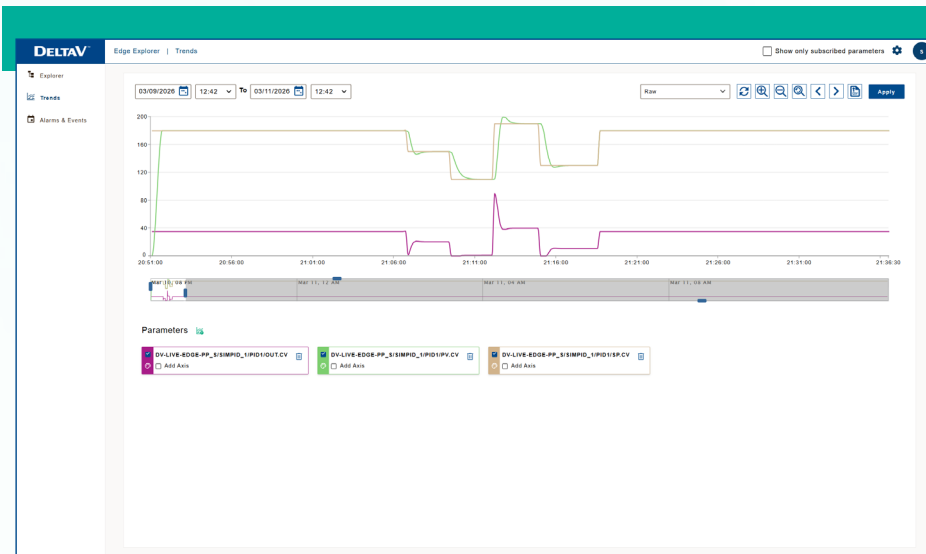
The Explorer view replicates the full DeltaV configuration hierarchy including areas, control strategies, modules, and parameters. Each node exposes its properties and relationships exactly as they appear in DeltaV. Subscribe to any parameter to begin tracking it in Trends.



**Browse the full hierarchy** using the same structure and icons as DeltaV Explorer.

**View properties** for any node without DeltaV operator access.

**Copy the full object path** directly from Explorer for use in REST API calls.



## TRENDS

### Monitor and analyze historical process data

Add any subscribed parameter and visualize its history across a custom time window. All data is drawn from the DeltaV Edge cache. Navigate, zoom, apply aggregate functions, and export to CSV for downstream reporting or analytics.

**Chart multiple parameters** simultaneously with independent axis scaling.

**Apply aggregate functions** including Average, Max, Min, Delta, and more.

**Export to CSV** in one click for use in reporting or analytics tools.

## ALARMS & EVENTS

### Investigate system conditions with full context

Surfaces alarm and event records stored on the Edge Node with full timestamps, severity, module context, and descriptive fields. Filter, search, and inspect individual records without needing access to the DeltaV workstation.

Timestamp	State	Unit	Module	Parameter	Module Desc	DESC1	DESC2	Level	Event Type
03-09-2026 02:58:51.996 PM	SUPPRESS		PT345	HL_HL_ALM	Floc Pressure	HHS	High High	CRITICAL	ALARM
03-09-2026 02:48:51.802 PM	SUPPRESS		PT345	HL_HL_ALM	Floc Pressure	HHS	High High	CRITICAL	ALARM
03-09-2026 02:38:51.874 PM	SUPPRESS		PT345	HL_HL_ALM	Floc Pressure	HHS	High High	CRITICAL	ALARM
03-09-2026 02:28:50.823 PM	SUPPRESS		PT345	HL_HL_ALM	Floc Pressure	HHS	High High	CRITICAL	ALARM
03-09-2026 02:18:50.536 PM	SUPPRESS		PT345	HL_HL_ALM	Floc Pressure	HHS	High High	CRITICAL	ALARM
03-09-2026 02:08:50.238 PM	SUPPRESS		PT345	HL_HL_ALM	Floc Pressure	HHS	High High	CRITICAL	ALARM
03-09-2026 01:58:35.110 PM	SUPPRESS		PT345	HL_HL_ALM	Floc Pressure	HHS	High High	CRITICAL	ALARM
03-09-2026 01:48:34.852 PM	SUPPRESS		PT345	HL_HL_ALM	Floc Pressure	HHS	High High	CRITICAL	ALARM
03-09-2026 01:38:34.287 PM	SUPPRESS		PT345	HL_HL_ALM	Floc Pressure	HHS	High High	CRITICAL	ALARM
03-09-2026 01:28:34.116 PM	SUPPRESS		PT345	HL_HL_ALM	Floc Pressure	HHS	High High	CRITICAL	ALARM
03-09-2026 01:18:33.458 PM	SUPPRESS		PT345	HL_HL_ALM	Floc Pressure	HHS	High High	CRITICAL	ALARM
03-09-2026 01:08:33.208 PM	SUPPRESS		PT345	HL_HL_ALM	Floc Pressure	HHS	High High	CRITICAL	ALARM
03-09-2026 12:58:33.082 PM	SUPPRESS		PT345	HL_HL_ALM	Floc Pressure	HHS	High High	CRITICAL	ALARM
03-09-2026 12:48:32.823 PM	SUPPRESS		PT345	HL_HL_ALM	Floc Pressure	HHS	High High	CRITICAL	ALARM
03-09-2026 12:38:32.565 PM	SUPPRESS		PT345	HL_HL_ALM	Floc Pressure	HHS	High High	CRITICAL	ALARM
03-09-2026 12:28:32.307 PM	SUPPRESS		PT345	HL_HL_ALM	Floc Pressure	HHS	High High	CRITICAL	ALARM
03-09-2026 12:18:32.049 PM	SUPPRESS		PT345	HL_HL_ALM	Floc Pressure	HHS	High High	CRITICAL	ALARM
03-09-2026 12:08:31.791 PM	SUPPRESS		PT345	HL_HL_ALM	Floc Pressure	HHS	High High	CRITICAL	ALARM
03-09-2026 11:58:31.533 PM	SUPPRESS		PT345	HL_HL_ALM	Floc Pressure	HHS	High High	CRITICAL	ALARM

**Filter by any property-value** combination to isolate conditions or time windows.

**Inspect full alarm metadata** including area, module, category, and level.

**Export filtered lists to CSV** for shift handover or incident analysis.

### Contact Us

[www.emerson.com/contactus](http://www.emerson.com/contactus)

©2026, Emerson. All rights reserved.

The Emerson logo is a trademark and service mark of Emerson Electric Co. The DeltaV logo is a mark of one of the Emerson family of companies. All other marks are the property of their respective owners.

The contents of this publication are prepared for informational purposes only, and while diligent efforts were made to ensure their accuracy, they are not to be construed as warranties or guarantees, express or implied, regarding the products or services described herein or their use or applicability. All sales are governed by our terms and conditions, which are available on request. We reserve the right to modify or improve the designs or specifications of our products at any time without notice.